

1:20,000

1 in Represents 1700 Feet  
(When Plotted on Arch D Media)  
At 11" x 17" (47%) Approx. Scale is 1:42500  
(One Inch Represents Approx. 3500 Feet)

New York State Plane  
Central Projection  
1983 North American Datum

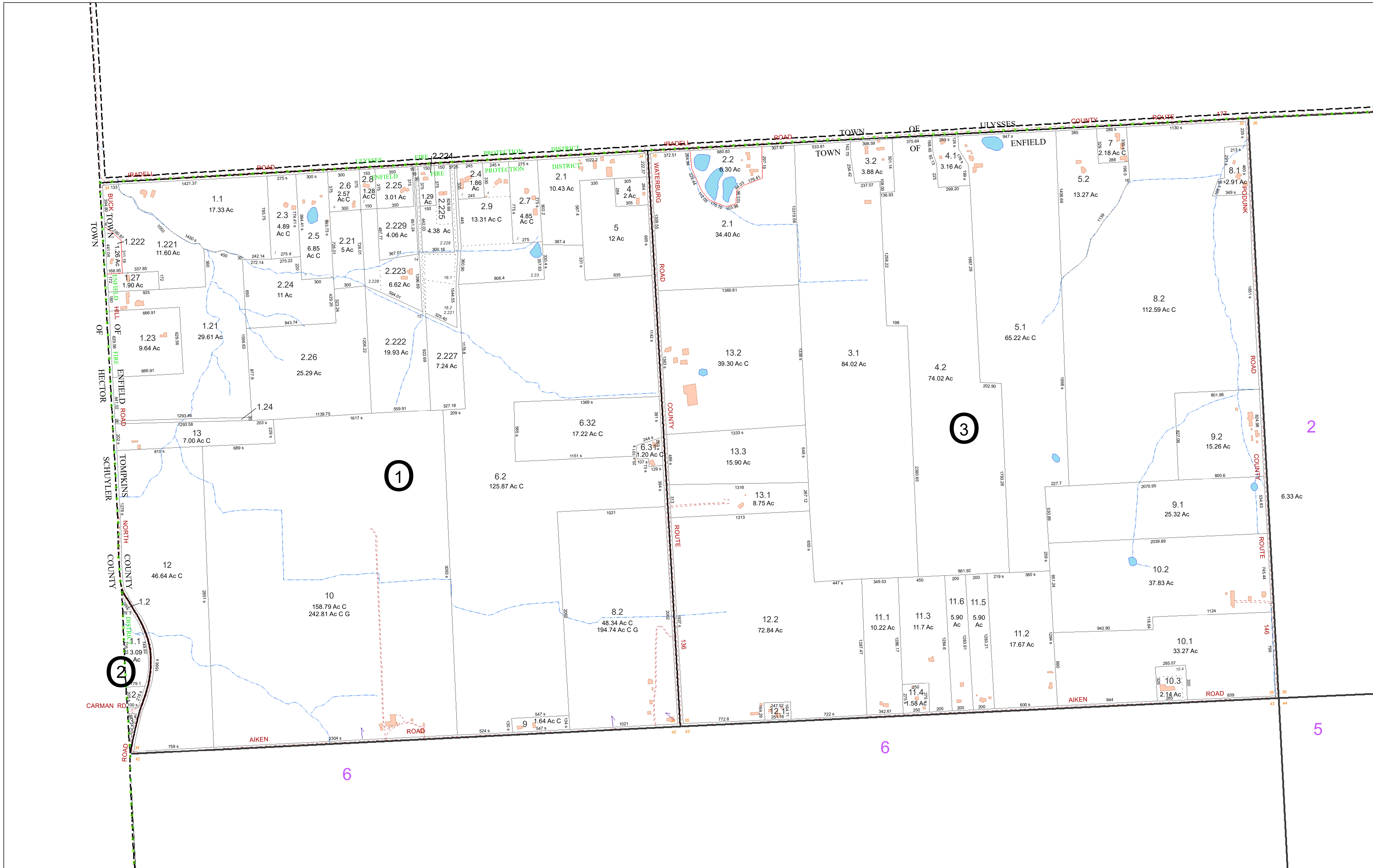
MAP REVISED: 1-July-2023  
MAP PRINTED: 1-July-2023

**TAX MAP**  
**TOWN OF ENFIELD**  
TOMPKINS COUNTY, NY  
APPROVED BY  
NEW YORK STATE  
OFFICE OF REAL PROPERTY SERVICES

CASE NO. 2017  
DATE 11/04/1999

*Randy J. Pincus*  
EXECUTIVE DIRECTOR

Copyright (c) 2000 by Tompkins County. Resale or redistribution is strictly prohibited.



**FOR TAX PURPOSES ONLY**  
NOT TO BE USED FOR CONVEYANCE

All tax maps are referenced to the New York State Plane Central Coordinate System using the 1983 North American Datum. Property lines have been registered to 1991-92 Tompkins County Digital Planimetric Base Map, and, as a result, dimensions and acreages may vary from legal descriptions. For complete legal descriptions or conveyances, please refer to the appropriate deeds and surveys.

**NOTICE OF DISCLAIMER**  
This map represents a compilation of graphical and textual information from deeds and surveys, a digital planimetric base map, and digital conversion of hand-drawn mylar maps. Errors and omissions can occur from each of these sources; each source represents a large number of records and originators of information. As a practical matter, the County does not warrant the accuracy or completeness of the information portrayed. The end user of these maps agrees to accept the data "as is" with the full knowledge that errors and omissions may exist, and to hold harmless the County for any damages that may result from an inappropriate use of these maps.

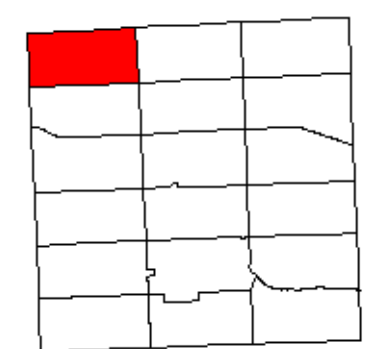
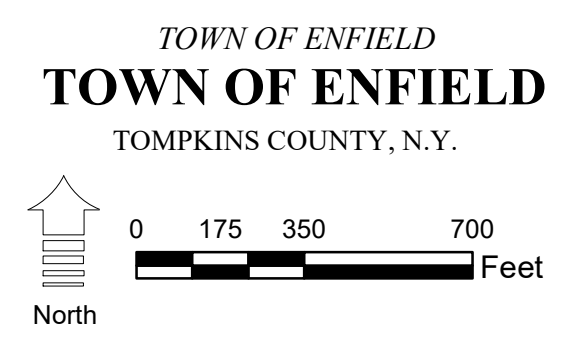
**SPECIAL DISTRICT INFORMATION**

Trumansburg Central School District  
Enfield Fire Protection District

- Building Footprint (1991-2023)
- Curb/Pavement Line
- Railroad
- Hydrography
- Special Districts
- Municipality
- Military Tract/Watkins & Flint Lot Number

- LEGEND**
- Parcel Connector
  - Property Line
  - Former Property Line
  - Current Year Changes
  - Block Limit
  - External Tax Map
  - Block Number

- 43.1** Parcel Lot Number
- 3 12** Previous Lot Number
- 4 3** Subdivision Lot Number
- 5.6 Ac** Deed/Survey Acreage
- 2.11 Ac C** Computed Acreage
- 18.50 Ac C** Grouped (Total) Acreage
- 100s** Scaled (Calculated) Acreage
- 100d** Deed Dimension



MAP: 1  
SCALE: **1" = 400'**  
(When plotted on Arch D Media)  
11 x 17" (47%), scale is 1" = 800'  
MAP REVISED: 1-JULY-2023  
MAP PRINTED: 1-JULY-2023



**FOR TAX PURPOSES ONLY**  
NOT TO BE USED FOR CONVEYANCE

All tax maps are referenced to the New York State Plane Central Coordinate System using the 1983 North American Datum. Property lines have been registered to 1991-92 Tompkins County Digital Planimetric Base Map, and, as a result, dimensions and acreages may vary from legal descriptions. For complete legal descriptions or conveyances, please refer to the appropriate deeds and surveys.

**NOTICE OF DISCLAIMER**  
This map represents a compilation of graphical and textual information from deeds and surveys, a digital planimetric base map, and digital conversion of hand-drawn mylar maps. Errors and omissions can occur from each of these sources, each source represents a large number of records and originators of information. As a practical matter, the County does not warrant the accuracy or completeness of the information portrayed. The end user of these maps agrees to accept the data "as is" with the full knowledge that errors and omissions may exist, and to hold harmless the County for any damages that may result from an inappropriate use of these maps.

**SPECIAL DISTRICT INFORMATION**

Trumansburg Central School District  
Enfield Fire Protection District

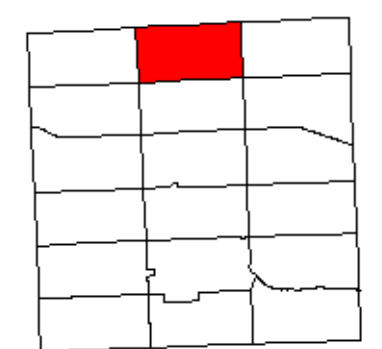
- Building Footprint (1991-2023)
- Curb/Pavement Line
- Railroad
- Hydrography
- Special Districts
- Municipality
- Military Tract/Watkins & Flint Lot Number

- LEGEND**
- Parcel Connector
  - Property Line
  - Former Property Line
  - Current Year Changes
  - Block Limit
  - External Tax Map
  - Block Number

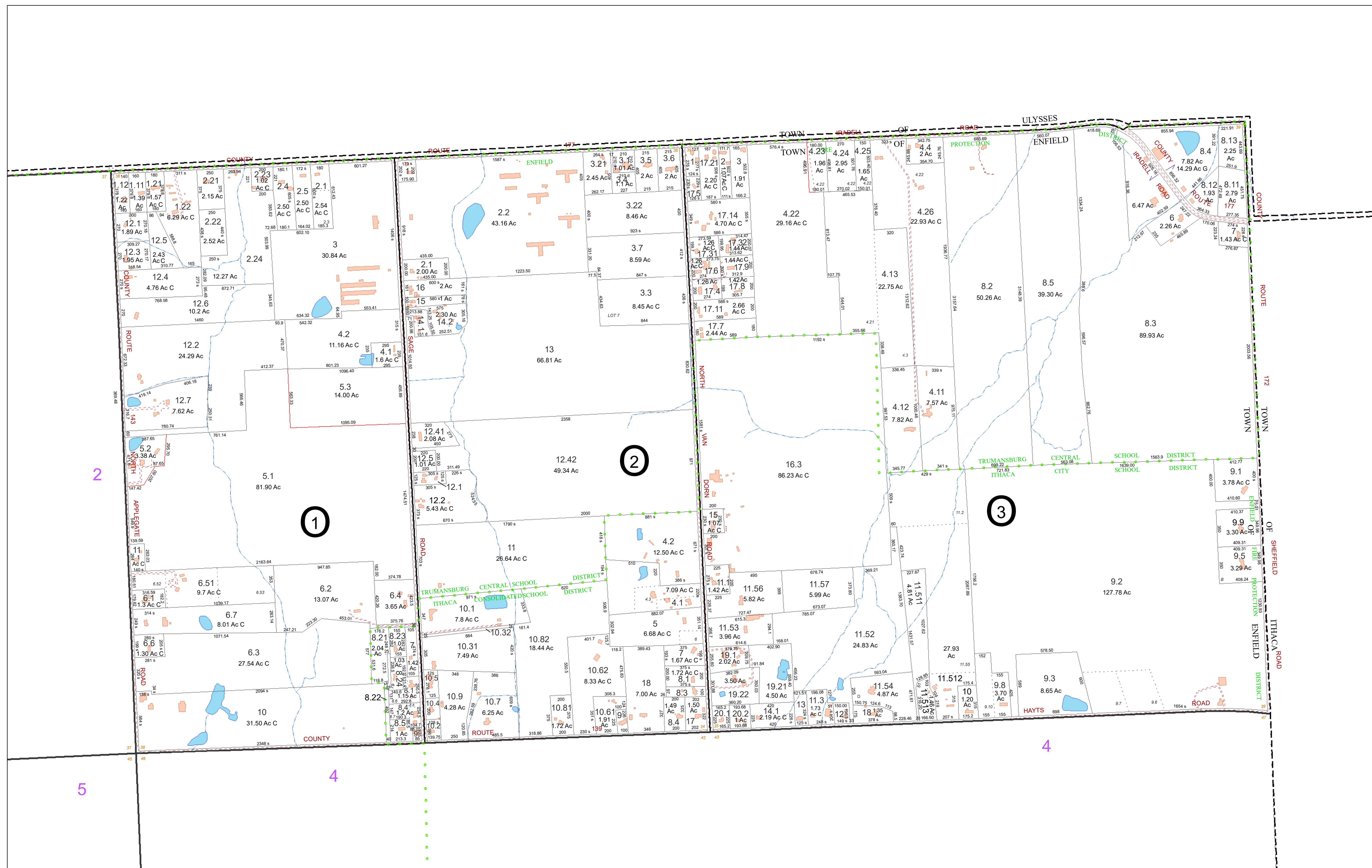
- 43.1** Parcel Lot Number
- 3 12** Previous Lot Number
- 4 3** Subdivision Lot Number
- 5.6 Ac** Deed/Survey Acreage
- 2.11 Ac C** Computed Acreage
- 18.50 Ac G** Grouped (Total) Acreage
- 100s** Scaled (Calculated) Acreage
- 100d** Deed Dimension

**TOWN OF ENFIELD**  
TOMPKINS COUNTY, N.Y.

0 175 350 700 Feet



MAP: 2  
SCALE: 1" = 400'  
(When plotted on Arch D Media)  
11 x 17" (47%), scale is 1" = 800'  
MAP REVISED: 1-JULY-2023  
MAP PRINTED: 1-JULY-2023



**FOR TAX PURPOSES ONLY**  
NOT TO BE USED FOR CONVEYANCE

All tax maps are referenced to the New York State Plane Central Coordinate System using the 1983 North American Datum. Property lines have been registered to 1991-92 Tompkins County Digital Planimetric Base Map, and, as a result, dimensions and acreages may vary from legal descriptions. For complete legal descriptions or conveyances, please refer to the appropriate deeds and surveys.

**NOTICE OF DISCLAIMER**  
This map represents a compilation of graphical and textual information from deeds and surveys, a digital planimetric base map, and digital conversion of hand-drawn mylar maps. Errors and omissions can occur from each of these sources, each source represents a large number of records and originators of information. As a practical matter, the County does not warrant the accuracy or completeness of the information portrayed. The user of these maps agrees to accept the data "as is" with the full knowledge that errors and omissions may exist, and to hold harmless the County for any damages that may result from an inappropriate use of these maps.

**SPECIAL DISTRICT INFORMATION**  
Ithaca City School District  
Trumansburg Central School District  
Enfield Fire Protection District

- Building Footprint (1991-2023)
- Curb/Pavement Line
- Railroad
- Hydrography
- Special Districts
- Municipality
- Military Tract/Watkins & Flint Lot Number

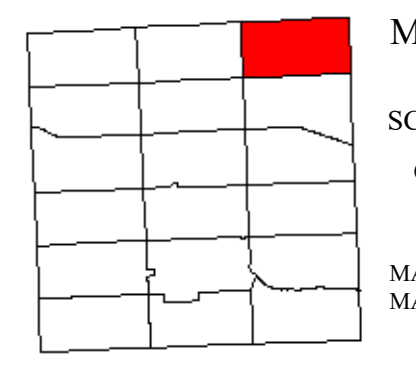
- LEGEND**
- Parcel Connector
  - Property Line
  - Former Property Line
  - Current Year Changes
  - Block Limit
  - External Tax Map
  - Block Number

- 43.1** Parcel Lot Number
- 3 12** Previous Lot Number
- 4 3** Subdivision Lot Number
- 5.6 Ac** Deed/Survey Acreage
- 2.11 Ac C** Computed Acreage
- 18.50 Ac G** Grouped (Total) Acreage
- 100s** Scaled (Calculated) Acreage
- 100d** Deed Dimension

**TOWN OF ENFIELD**  
TOMPKINS COUNTY, N.Y.

0 175 350 700 Feet

North



MAP: **3**

SCALE: **1" = 400'**  
(When plotted on Arch D Media)  
11 x 17" (47%), scale is 1" = 800'

MAP REVISED: 1-JULY-2023  
MAP PRINTED: 1-JULY-2023



**FOR TAX PURPOSES ONLY**  
NOT TO BE USED FOR CONVEYANCE

All tax maps are referenced to the New York State Plane Central Coordinate System using the 1983 North American Datum. Property lines have been registered to 1991-92 Tompkins County Digital Planimetric Base Map, and, as a result, dimensions and acreages may vary from legal descriptions. For complete legal descriptions or conveyances, please refer to the appropriate deeds and surveys.

**NOTICE OF DISCLAIMER**  
This map represents a compilation of graphical and textual information from deeds and surveys, a digital planimetric base map, and digital conversion of hand-drawn mylar maps. Errors and omissions can occur from each of these sources; each source represents a large number of records and originators of information. As a practical matter, the County does not warrant the accuracy or completeness of the information portrayed. The end user of these maps agrees to accept the data "as is" with the full knowledge that errors and omissions may exist, and to hold harmless the County for any damages that may result from an inappropriate use of these maps.

**SPECIAL DISTRICT INFORMATION**  
Ithaca City School District  
Trumansburg Central School District  
Enfield Fire Protection District

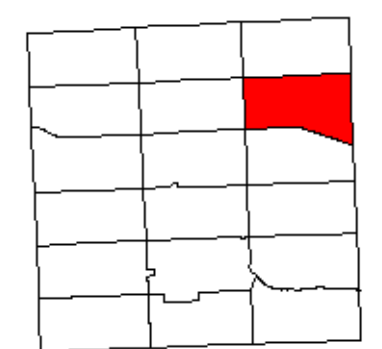
- Building Footprint (1991-2023)
- Curb/Pavement Line
- Railroad
- Hydrography
- Special Districts
- Municipality
- Military Tract/Watkins & Flint Lot Number

- Parcel Connector
- Property Line
- Former Property Line
- Current Year Changes
- Block Limit
- External Tax Map
- Block Number

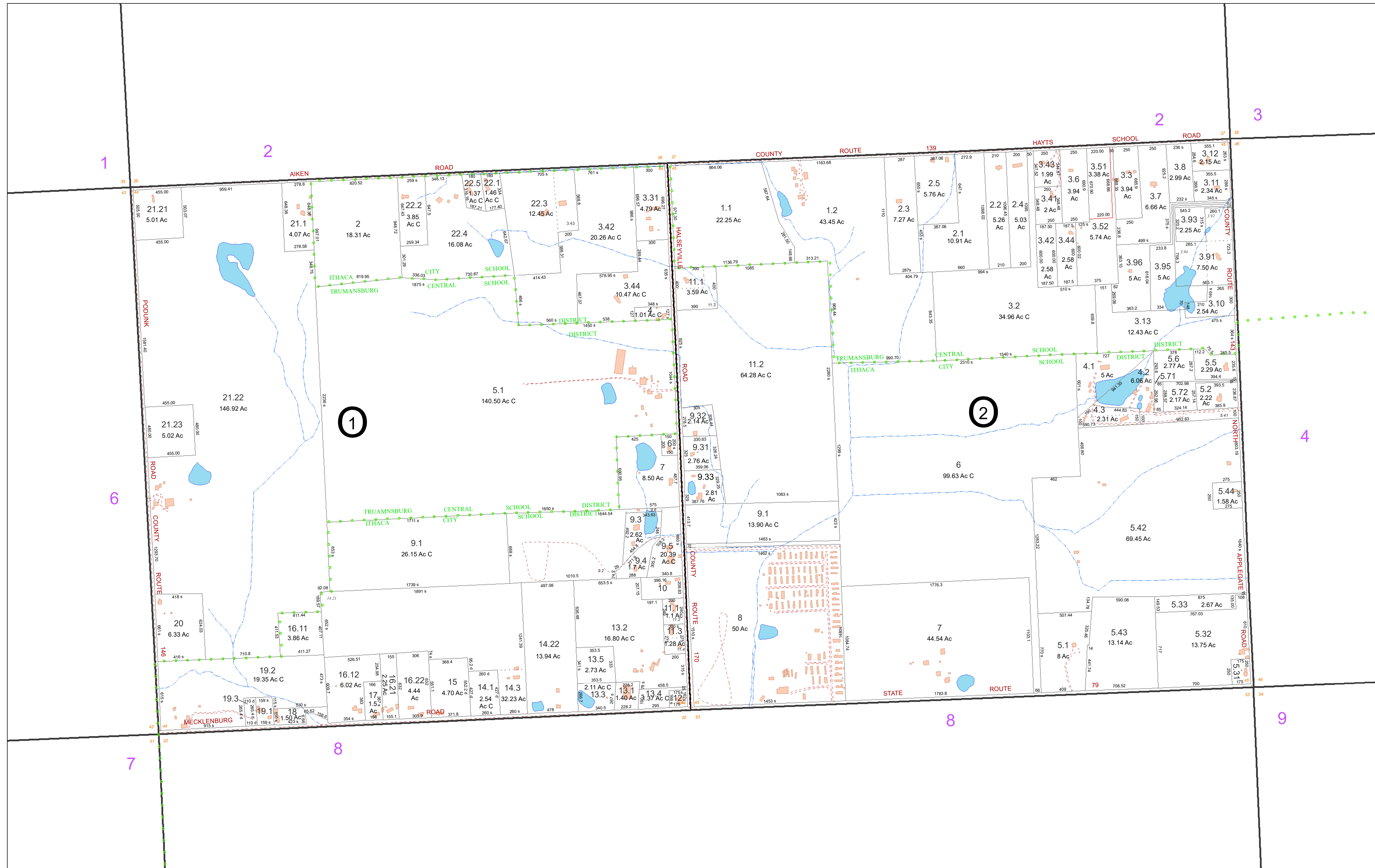
- 43.1** Parcel Lot Number
- 3 12** Previous Lot Number
- 4 3** Subdivision Lot Number
- 5.6 Ac** Deed/Survey Acreage
- 2.11 Ac C** Computed Acreage
- 18.50 Ac G** Grouped (Total) Acreage
- 100s** Scaled (Calculated) Acreage
- 100d** Deed Dimension

**TOWN OF ENFIELD**  
TOMPKINS COUNTY, N.Y.

0 175 350 700 Feet



MAP: 4  
SCALE: 1" = 400'  
(When plotted on Arch D Media)  
11 x 17" (47%), scale is 1" = 800'  
MAP REVISED: 1-JULY-2023  
MAP PRINTED: 1-JULY-2023



**FOR TAX PURPOSES ONLY**  
NOT TO BE USED FOR CONVEYANCE

All tax maps are referenced to the New York State Plane Central Coordinate System using the 1983 North American Datum. Property lines have been registered to 1991-92 Tompkins County Digital Planimetric Base Map, and, as a result, dimensions and acreages may vary from legal descriptions. For complete legal descriptions or conveyances, please refer to the appropriate deeds and surveys.

**NOTICE OF DISCLAIMER**

This map represents a compilation of graphical and textual information from deeds and surveys, a digital planimetric base map, and digital conversion of hand-drawn mylar maps. Errors and omissions can occur from each of these sources, each source represents a large number of records and originators of information. As a practical matter, the County does not warrant the accuracy or completeness of the information portrayed. The user of these maps agrees to accept the data "as is" with the full knowledge that errors and omissions may exist, and to hold harmless the County for any damages that may result from an inappropriate use of these maps.

**SPECIAL DISTRICT INFORMATION**

Ithaca City School District  
Trumansburg Central School District  
Enfield Fire Protection District

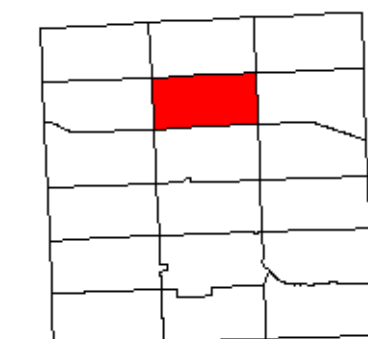
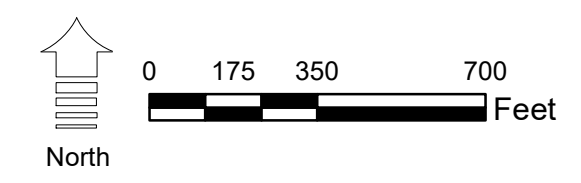
- Building Footprint (1991-2023)
- Curb/Pavement Line
- Railroad
- Hydrography
- Special Districts
- Municipality
- Military Tract/Watkins & Flint Lot Number

**LEGEND**

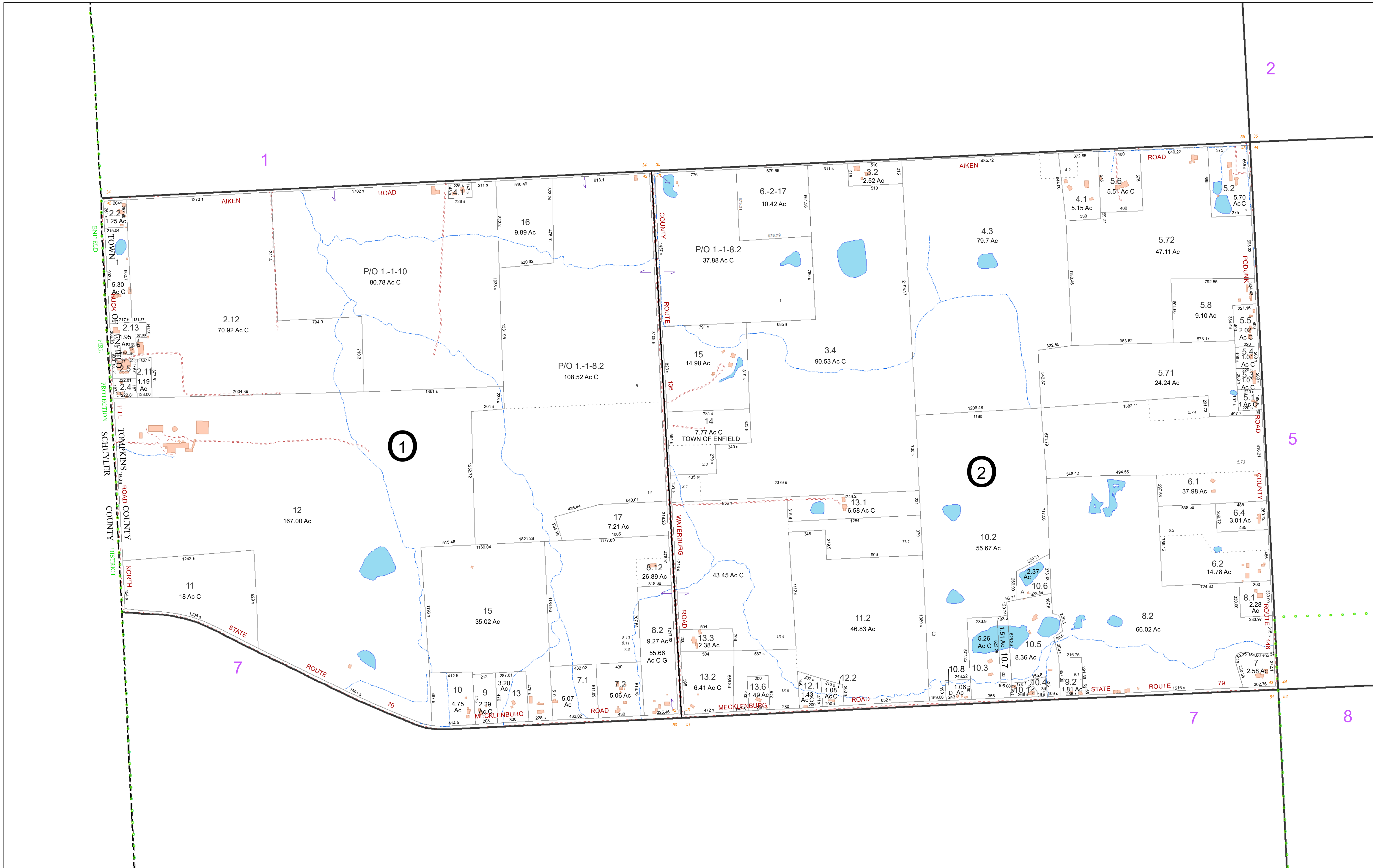
- Parcel Connector
- Property Line
- Former Property Line
- Current Year Changes
- Block Limit
- External Tax Map
- Block Number

- 43.1** Parcel Lot Number
- 3.12** Previous Lot Number
- 4.3** Subdivision Lot Number
- 5.6 Ac** Deed/Survey Acreage
- 2.11 Ac C** Computed Acreage
- 18.50 Ac G** Grouped (Total) Acreage
- 100s** Scaled (Calculated) Acreage
- 100d** Deed Dimension

TOWN OF ENFIELD  
TOMPKINS COUNTY, N.Y.



MAP: 5  
SCALE: 1" = 400'  
(When plotted on Arch D Media)  
11 x 17" (47%), scale is 1" = 800'  
MAP REVISED: 1-JULY-2023  
MAP PRINTED: 1-JULY-2023



**FOR TAX PURPOSES ONLY**  
NOT TO BE USED FOR CONVEYANCE

All tax maps are referenced to the New York State Plane Central Coordinate System using the 1983 North American Datum. Property lines have been registered to 1991-92 Tompkins County Digital Planimetric Base Map, and, as a result, dimensions and acreages may vary from legal descriptions. For complete legal descriptions or conveyances, please refer to the appropriate deeds and surveys.

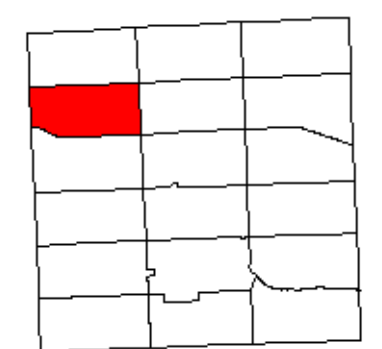
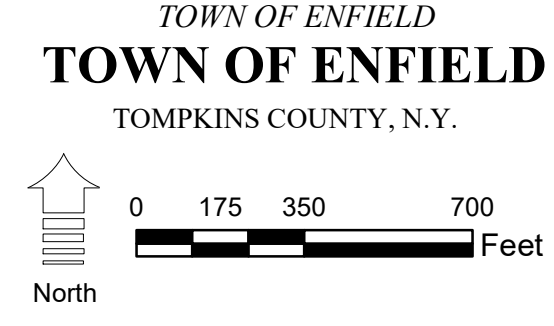
**NOTICE OF DISCLAIMER**  
This map represents a compilation of graphical and textual information from deeds and surveys, a digital planimetric base map, and digital conversion of hand-drawn mylar maps. Errors and omissions can occur from each of these sources; each source represents a large number of records and originators of information. As a practical matter, the County does not warrant the accuracy or completeness of the information portrayed. The end user of these maps agrees to accept the data "as is" with the full knowledge that errors and omissions may exist, and to hold harmless the County for any damages that may result from an inappropriate use of these maps.

**SPECIAL DISTRICT INFORMATION**  
Trumansburg Central School District  
Enfield Fire Protection District

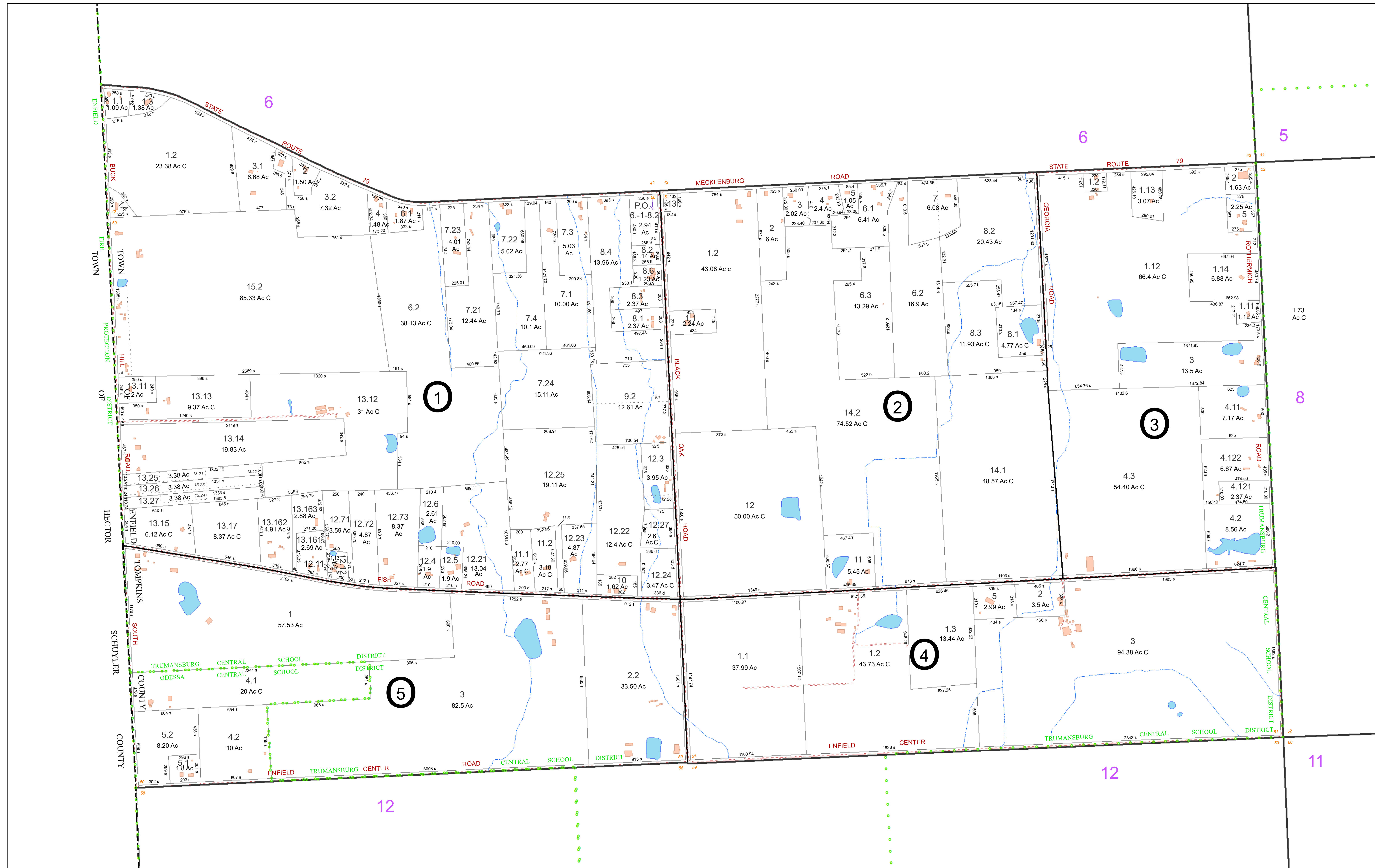
- Building Footprint (1991-2023)
- Curb/Pavement Line
- Railroad
- Hydrography
- Special Districts
- Municipality
- Military Tract/Watkins & Flint Lot Number

- LEGEND**
- Parcel Connector
  - Property Line
  - Former Property Line
  - Current Year Changes
  - Block Limit
  - External Tax Map
  - Block Number

- 43.1** Parcel Lot Number
- 3 12** Previous Lot Number
- 4 3** Subdivision Lot Number
- 5.6 Ac** Deed/Survey Acreage
- 2.11 Ac C** Computed Acreage
- 18.50 Ac G** Grouped (Total) Acreage
- 100s** Scaled (Calculated) Acreage
- 100d** Deed Dimension



MAP: 6  
SCALE: 1" = 400'  
(When plotted on Arch D Media)  
11 x 17" (47%), scale is 1" = 800'  
MAP REVISED: 1-JULY-2023  
MAP PRINTED: 1-JULY-2023



**FOR TAX PURPOSES ONLY**  
NOT TO BE USED FOR CONVEYANCE

All tax maps are referenced to the New York State Plane Central Coordinate System using the 1983 North American Datum. Property lines have been registered to 1991-92 Tompkins County Digital Planimetric Base Map, and, as a result, dimensions and acreages may vary from legal descriptions. For complete legal descriptions or conveyances, please refer to the appropriate deeds and surveys.

**NOTICE OF DISCLAIMER**

This map represents a compilation of graphical and textual information from deeds and surveys, a digital planimetric base map, and digital conversion of hand-drawn mylar maps. Errors and omissions can occur from each of these sources; each source represents a large number of records and originators of information. As a practical matter, the County does not warrant the accuracy or completeness of the information portrayed. The end user of these maps agrees to accept the data "as is" with the full knowledge that errors and omissions may exist, and to hold harmless the County for any damages that may result from an inappropriate use of these maps.

**SPECIAL DISTRICT INFORMATION**

Trumansburg Central School District  
Odessa-Montour Central School District  
Enfield Fire Protection District

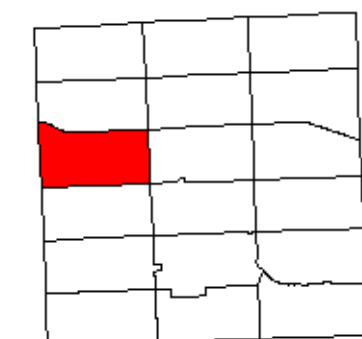
- Building Footprint (1991-2023)
- Curb/Pavement Line
- Railroad
- Hydrography
- Special Districts
- Municipality
- Military Tract/Watkins & Flint Lot Number

**LEGEND**

- Parcel Connector
- Property Line
- Former Property Line
- Current Year Changes
- Block Limit
- External Tax Map
- Block Number

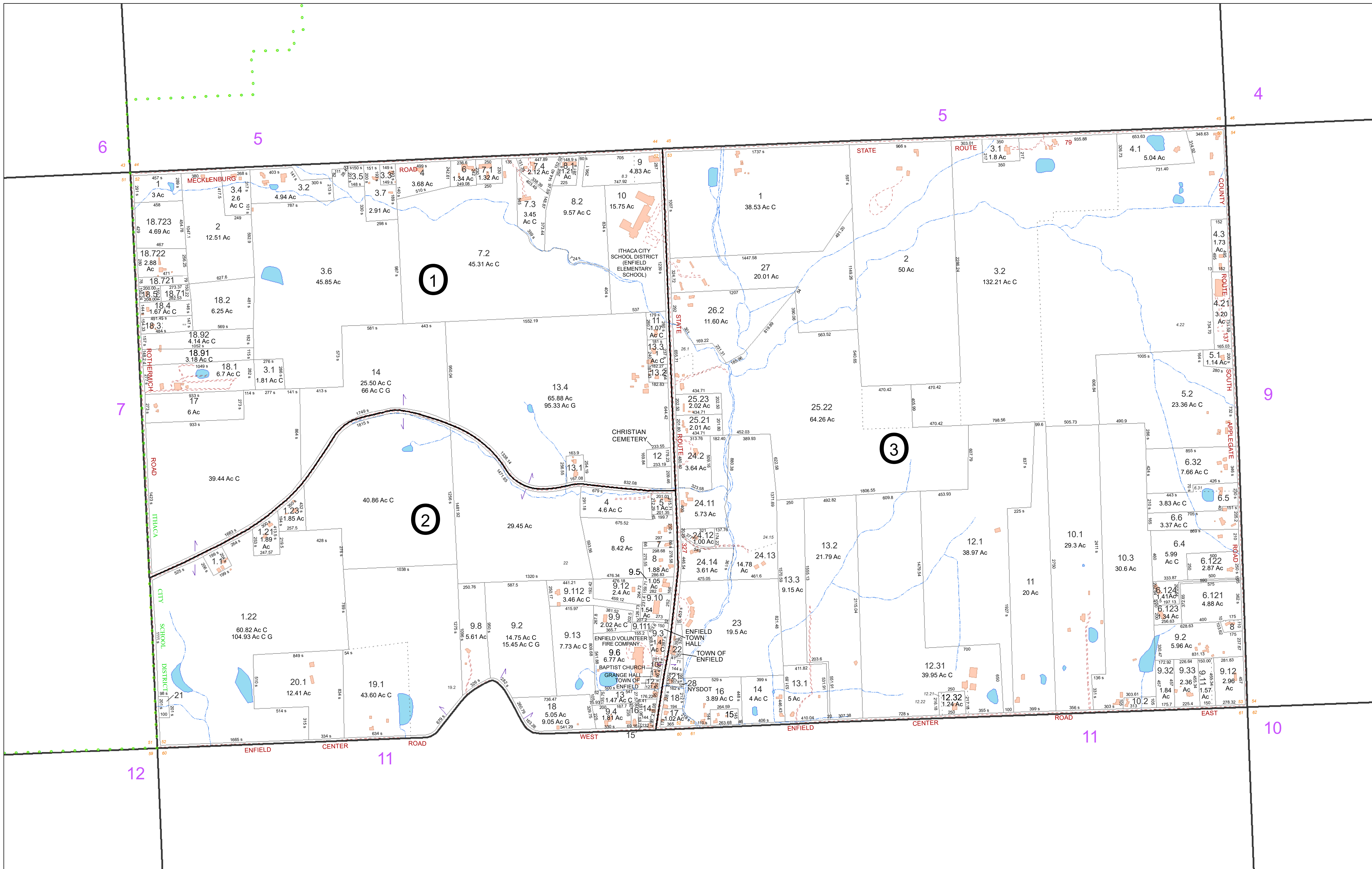
- 43.1** Parcel Lot Number
- 3 12** Previous Lot Number
- 4 3** Subdivision Lot Number
- 5.6 Ac** Deed/Survey Acreage
- 2.11 Ac C** Computed Acreage
- 18.50 Ac C** Grouped (Total) Acreage
- 100s** Scaled (Calculated) Acreage
- 100d** Deed Dimension

TOWN OF ENFIELD  
TOMPKINS COUNTY, N.Y.



MAP: 7  
SCALE: 1" = 400'  
(When plotted on Arch D Media)  
11 x 17" (47%), scale is 1" = 800'  
MAP REVISED: 1-JULY-2023  
MAP PRINTED: 1-JULY-2023





**FOR TAX PURPOSES ONLY**  
NOT TO BE USED FOR CONVEYANCE

All tax maps are referenced to the New York State Plane Central Coordinate System using the 1983 North American Datum. Property lines have been registered to 1991-92 Tompkins County Digital Planimetric Base Map, and, as a result, dimensions and acreages may vary from legal descriptions. For complete legal descriptions or conveyances, please refer to the appropriate deeds and surveys.

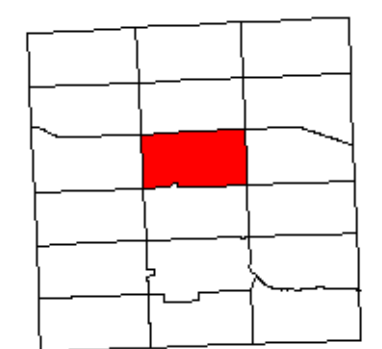
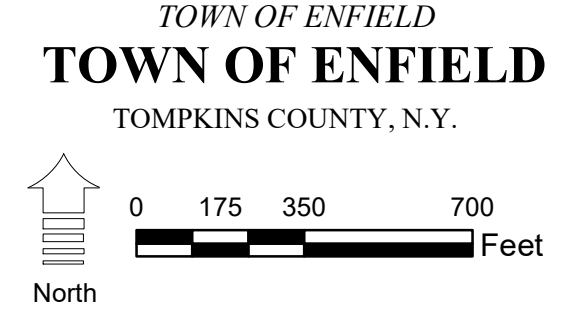
**NOTICE OF DISCLAIMER**  
This map represents a compilation of graphical and textual information from deeds and surveys, a digital planimetric base map, and digital conversion of hand-drawn mylar maps. Errors and omissions can occur from each of these sources, each source represents a large number of records and originators of information. As a practical matter, the County does not warrant the accuracy or completeness of the information portrayed. The end user of these maps agrees to accept the data "as is" with the full knowledge that errors and omissions may exist, and to hold harmless the County for any damages that may result from an inappropriate use of these maps.

**SPECIAL DISTRICT INFORMATION**  
Ithaca City School District  
Enfield Fire Protection District

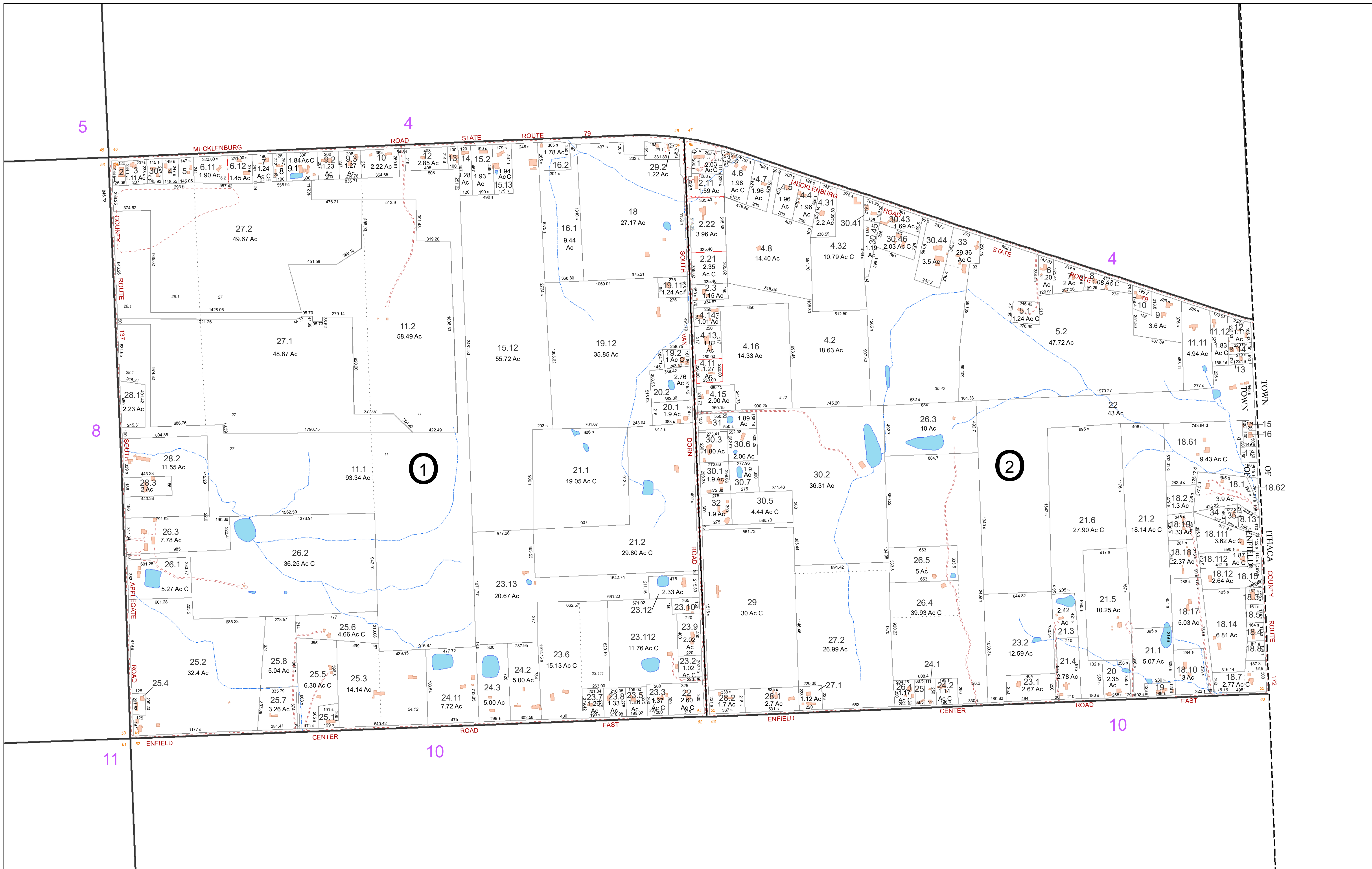
- Building Footprint (1991-2023)
- Curb/Pavement Line
- Railroad
- Hydrography
- Special Districts
- Municipality
- Military Tract/Watkins & Flint Lot Number

- LEGEND**
- Parcel Connector
  - Property Line
  - Former Property Line
  - Current Year Changes
  - Block Limit
  - External Tax Map
  - Block Number

- 43.1** Parcel Lot Number
- 3 12** Previous Lot Number
- 4 3** Subdivision Lot Number
- 5.6 Ac** Deed/Survey Acreage
- 2.11 Ac C** Computed Acreage
- 18.50 Ac G** Grouped (Total) Acreage
- 100s** Scaled (Calculated) Acreage
- 100d** Deed Dimension



MAP: 8  
SCALE: 1" = 400'  
(When plotted on Arch D Media)  
11 x 17" (47%), scale is 1" = 800'  
MAP REVISED: 1-JULY-2023  
MAP PRINTED: 1-JULY-2023



**FOR TAX PURPOSES ONLY**  
 NOT TO BE USED FOR CONVEYANCE

All tax maps are referenced to the New York State Plane Central Coordinate System using the 1983 North American Datum. Property lines have been registered to 1991-92 Tompkins County Digital Planimetric Base Map, and, as a result, dimensions and acreages may vary from legal descriptions. For complete legal descriptions or conveyances, please refer to the appropriate deeds and surveys.

**NOTICE OF DISCLAIMER**

This map represents a compilation of graphical and textual information from deeds and surveys, a digital planimetric base map, and digital conversion of hand-drawn mylar maps. Errors and omissions can occur from each of these sources; each source represents a large number of records and originators of information. As a practical matter, the County does not warrant the accuracy or completeness of the information portrayed. The end user of these maps agrees to accept the data "as is" with the full knowledge that errors and omissions may exist, and to hold harmless the County for any damages that may result from an inappropriate use of these maps.

**SPECIAL DISTRICT INFORMATION**

Ithaca City School District  
 Enfield Fire Protection District

- LEGEND**
- Building Footprint (1991-2023)
  - Curb/Pavement Line
  - Railroad
  - Hydrography
  - Special Districts
  - Municipality
  - Military Tract/Watkins & Flint Lot Number
  - Parcel Connector
  - Property Line
  - Former Property Line
  - Current Year Changes
  - Block Limit
  - External Tax Map
  - Block Number

- 43.1** Parcel Lot Number
- 3.12** Previous Lot Number
- 4.3** Subdivision Lot Number
- 5.6 Ac** Deed/Survey Acreage
- 2.11 Ac C** Computed Acreage
- 18.50 Ac G** Grouped (Total) Acreage
- 100s** Scaled (Calculated) Acreage
- 100d** Deed Dimension

**TOWN OF ENFIELD**  
 TOMPKINS COUNTY, N.Y.

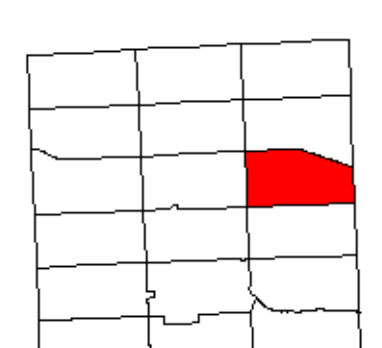
0 175 350 700 Feet

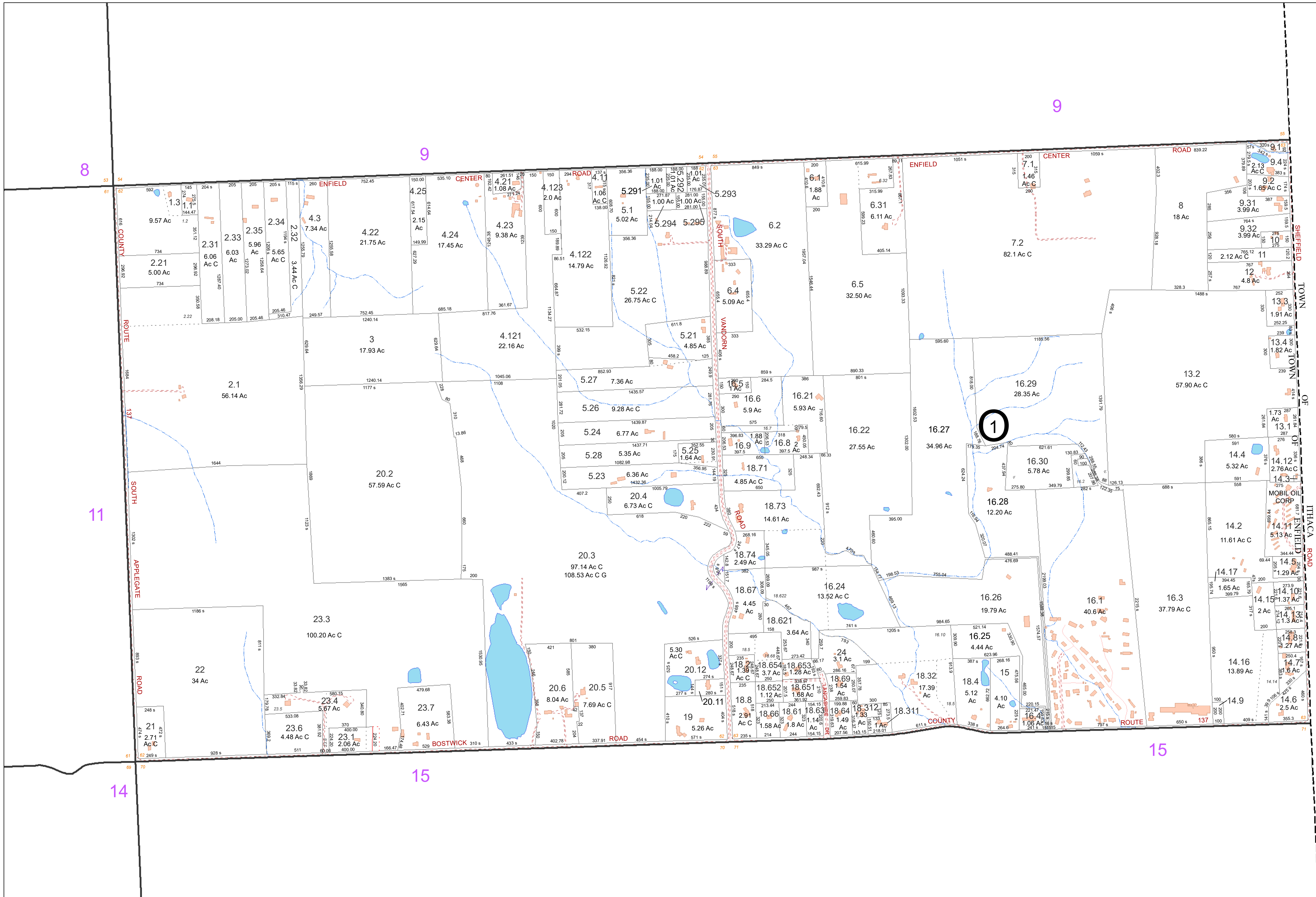
North

**TOWN OF ENFIELD**  
 TOMPKINS COUNTY, N.Y.

MAP: 9  
 SCALE: 1" = 400'  
 (When plotted on Arch D Media)  
 11 x 17" (47%), scale is 1" = 800'

MAP REVISED: 1-JULY-2023  
 MAP PRINTED: 1-JULY-2023





**FOR TAX PURPOSES ONLY**  
NOT TO BE USED FOR CONVEYANCE

All tax maps are referenced to the New York State Plane Central Coordinate System using the 1983 North American Datum. Property lines have been registered to 1991-92 Tompkins County Digital Planimetric Base Map, and, as a result, dimensions and acreages may vary from legal descriptions. For complete legal descriptions or conveyances, please refer to the appropriate deeds and surveys.

**NOTICE OF DISCLAIMER**  
This map represents a compilation of graphical and textual information from deeds and surveys, a digital planimetric base map, and digital conversion of hand-drawn mylar maps. Errors and omissions can occur from each of these sources; each source represents a large number of records and originators of information. As a practical matter, the County does not warrant the accuracy or completeness of the information portrayed. The end user of these maps agrees to accept the data "as is" with the full knowledge that errors and omissions may exist, and to hold harmless the County for any damages that may result from an inappropriate use of these maps.

**SPECIAL DISTRICT INFORMATION**

Ithaca City School District  
Enfield Fire Protection District

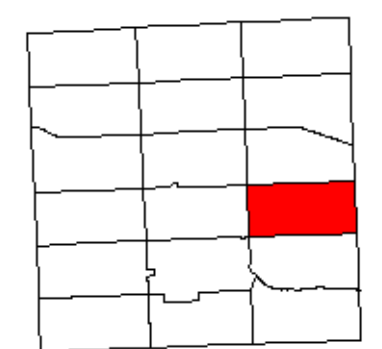
- Building Footprint (1991-2023)
- Curb/Pavement Line
- Railroad
- Hydrography
- Special Districts
- Municipality
- Military Tract/Watkins & Flint Lot Number

- LEGEND**
- Parcel Connector
  - Property Line
  - Former Property Line
  - Current Year Changes
  - Block Limit
  - External Tax Map
  - Block Number

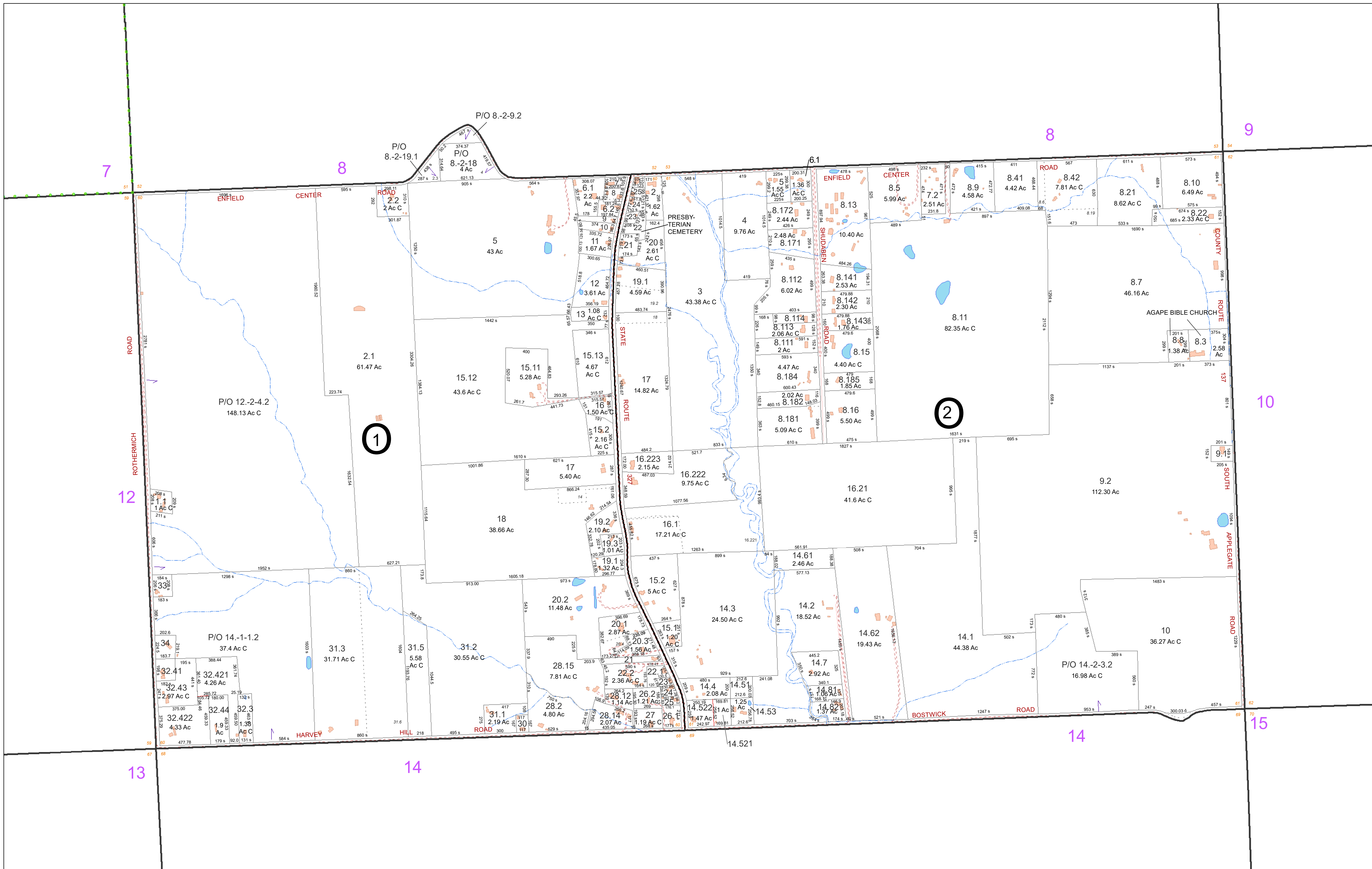
- 43.1** Parcel Lot Number
- 3 12** Previous Lot Number
- 4.3** Subdivision Lot Number
- 5.6 Ac** Deed/Survey Acreage
- 2.11 Ac C** Computed Acreage
- 18.50 Ac C** Grouped (Total) Acreage
- 100s** Scaled (Calculated) Acreage
- 100d** Deed Dimension

**TOWN OF ENFIELD**  
TOMPKINS COUNTY, N.Y.

North



MAP: 10  
SCALE: 1" = 400'  
(When plotted on Arch D Media)  
11 x 17" (47%), scale is 1" = 800'  
MAP REVISED: 1-JULY-2023  
MAP PRINTED: 1-JULY-2023



**FOR TAX PURPOSES ONLY**  
**NOT TO BE USED FOR CONVEYANCE**  
 All tax maps are referenced to the New York State Plane Central Coordinate System using the 1983 North American Datum. Property lines have been registered to 1991-92 Tompkins County Digital Planimetric Base Map, and, as a result, dimensions and acreages may vary from legal descriptions. For complete legal descriptions or conveyances, please refer to the appropriate deeds and surveys.

**NOTICE OF DISCLAIMER**  
 This map represents a compilation of graphical and textual information from deeds and surveys, a digital planimetric base map, and digital conversion of hand-drawn mylar maps. Errors and omissions can occur from each of these sources, each source represents a large number of records and originators of information. As a practical matter, the County does not warrant the accuracy or completeness of the information portrayed. The end user of these maps agrees to accept the data "as is" with the full knowledge that errors and omissions may exist, and to hold harmless the County for any damages that may result from an inappropriate use of these maps.

**SPECIAL DISTRICT INFORMATION**  
 Ithaca City School District  
 Enfield Fire Protection District

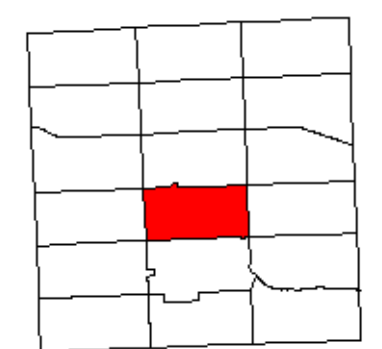
- LEGEND**
- Building Footprint (1991-2023)
  - Curb/Pavement Line
  - Railroad
  - Hydrography
  - Special Districts
  - Municipality
  - Military Tract/Watkins & Flint Lot Number
  - Parcel Connector
  - Property Line
  - Former Property Line
  - Current Year Changes
  - Block Limit
  - External Tax Map
  - Block Number

- 43.1** Parcel Lot Number
- 3 12** Previous Lot Number
- 4.3** Subdivision Lot Number
- 5.6 Ac** Deed/Survey Acreage
- 2.11 Ac C** Computed Acreage
- 18.50 Ac C** Grouped (Total) Acreage
- 100s** Scaled (Calculated) Acreage
- 100d** Deed Dimension

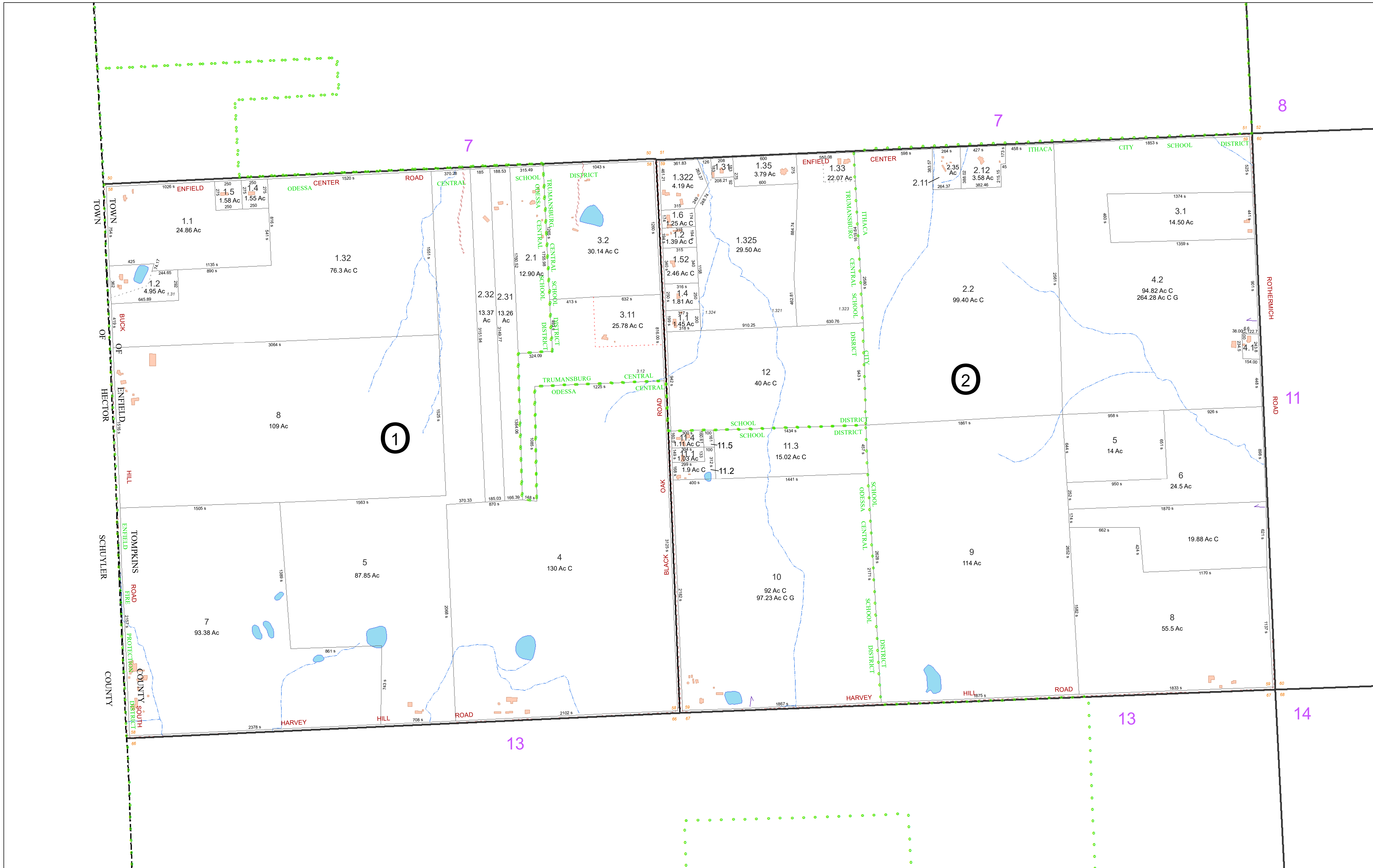
**TOWN OF ENFIELD**  
 TOMPKINS COUNTY, N.Y.

0 175 350 700 Feet

North



MAP: 11  
 SCALE: 1" = 400'  
 (When plotted on Arch D Media)  
 11 x 17" (47%), scale is 1" = 800'  
 MAP REVISED: 1-JULY-2023  
 MAP PRINTED: 1-JULY-2023



**FOR TAX PURPOSES ONLY**  
NOT TO BE USED FOR CONVEYANCE

All tax maps are referenced to the New York State Plane Central Coordinate System using the 1983 North American Datum. Property lines have been registered to 1991-92 Tompkins County Digital Planimetric Base Map, and, as a result, dimensions and acreages may vary from legal descriptions. For complete legal descriptions or conveyances, please refer to the appropriate deeds and surveys.

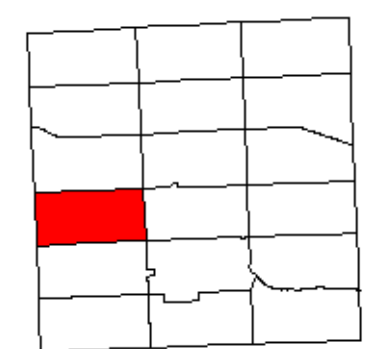
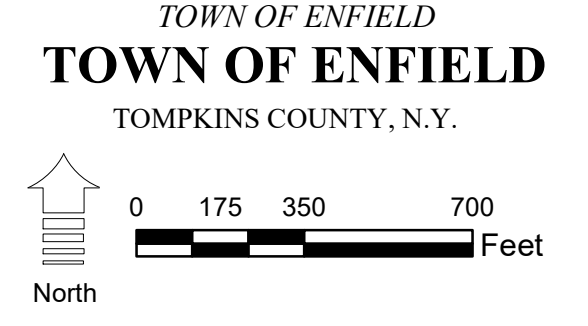
**NOTICE OF DISCLAIMER**  
This map represents a compilation of graphical and textual information from deeds and surveys, a digital planimetric base map, and digital conversion of hand-drawn mylar maps. Errors and omissions can occur from each of these sources; each source represents a large number of records and originators of information. As a practical matter, the County does not warrant the accuracy or completeness of the information portrayed. The end user of these maps agrees to accept the data "as is" with the full knowledge that errors and omissions may exist, and to hold harmless the County for any damages that may result from an inappropriate use of these maps.

**SPECIAL DISTRICT INFORMATION**  
Ithaca City School District  
Odessa-Montour Central School District  
Trumansburg Central School District  
Enfield Fire Protection District

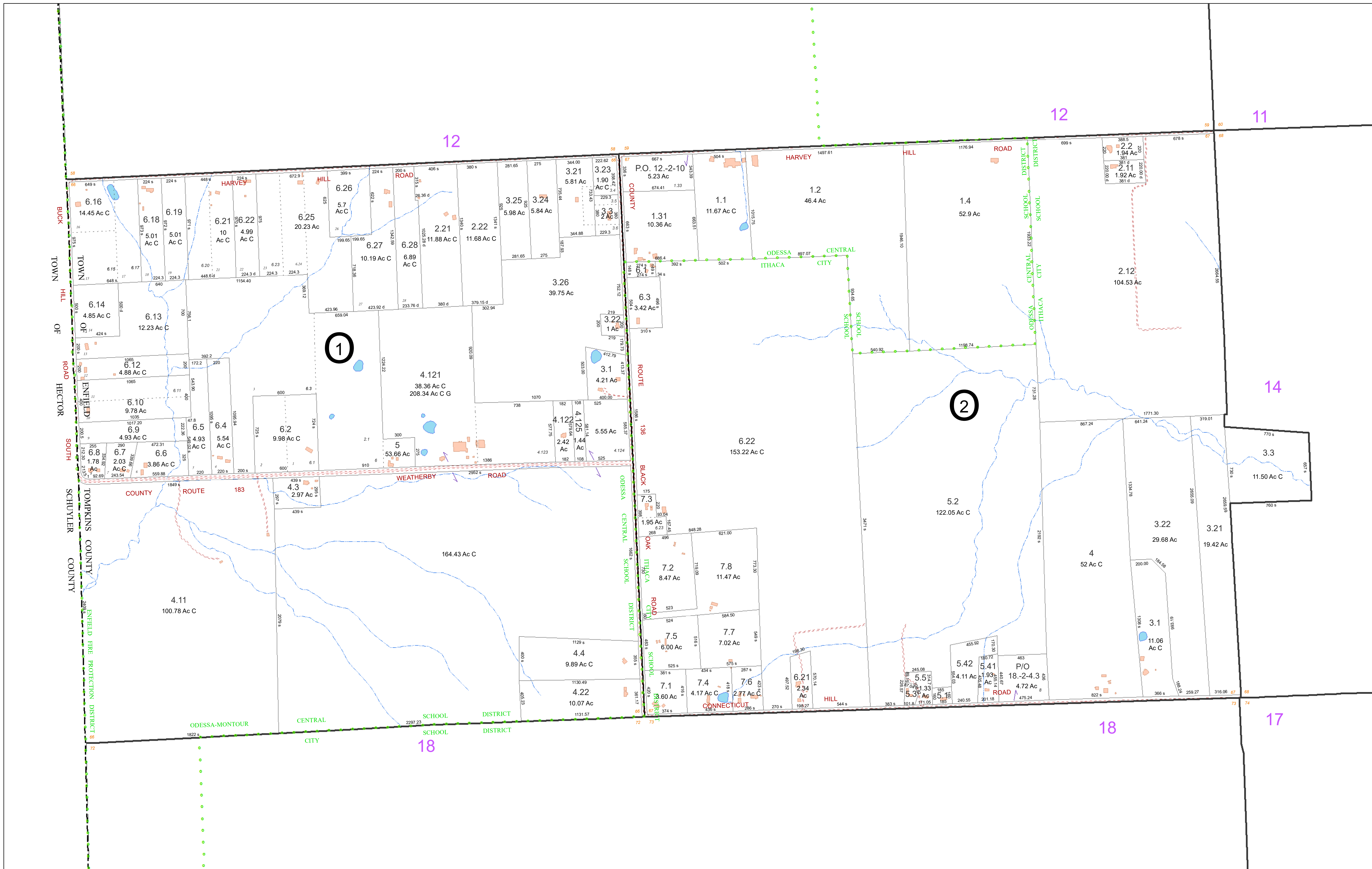
- Building Footprint (1991-2023)
- Curb/Pavement Line
- Railroad
- Hydrography
- Special Districts
- Municipality
- Military Tract/Watkins & Flint Lot Number

- LEGEND**
- Parcel Connector
  - Property Line
  - Former Property Line
  - Current Year Changes
  - Block Limit
  - External Tax Map
  - Block Number

	Parcel Lot Number	Previous Lot Number	Subdivision Lot Number	Deed/Survey Acreage	Computed Acreage	Grouped (Total) Acreage	Scaled (Calculated) Acreage	Deed Dimension
43.1	3	12	3	5.6 Ac	2.11 Ac C	18.50 Ac G	100s	100d



MAP: 12  
SCALE: 1" = 400'  
(When plotted on Arch D Media)  
11 x 17" (47%), scale is 1" = 800'  
MAP REVISED: 1-JULY-2023  
MAP PRINTED: 1-JULY-2023



**FOR TAX PURPOSES ONLY**  
NOT TO BE USED FOR CONVEYANCE

All tax maps are referenced to the New York State Plane Central Coordinate System using the 1983 North American Datum. Property lines have been registered to 1991-92 Tompkins County Digital Planimetric Base Map, and, as a result, dimensions and acreages may vary from legal descriptions. For complete legal descriptions or conveyances, please refer to the appropriate deeds and surveys.

**NOTICE OF DISCLAIMER**  
This map represents a compilation of graphical and textual information from deeds and surveys, a digital planimetric base map, and digital conversion of hand-drawn mylar maps. Errors and omissions can occur from each of these sources; each source represents a large number of records and originators of information. As a practical matter, the County does not warrant the accuracy or completeness of the information portrayed. The end user of these maps agrees to accept the data "as is" with the full knowledge that errors and omissions may exist, and to hold harmless the County for any damages that may result from an inappropriate use of these maps.

**SPECIAL DISTRICT INFORMATION**

Ithaca City School District  
Odessa-Montour Central School District  
Enfield Fire Protection District

- Building Footprint (1991-2023)
- Curb/Pavement Line
- Railroad
- Hydrography
- Special Districts
- Municipality
- Military Tract/Watkins & Flint Lot Number

- Parcel Connector
- Property Line
- Former Property Line
- Current Year Changes
- Block Limit
- External Tax Map
- Block Number

- 43.1** Parcel Lot Number
- 3 12** Previous Lot Number
- 4.3** Subdivision Lot Number
- 5.6 Ac** Deed/Survey Acreage
- 2.11 Ac C** Computed Acreage
- 18.50 Ac G** Grouped (Total) Acreage
- 100s** Scaled (Calculated) Acreage
- 100d** Deed Dimension

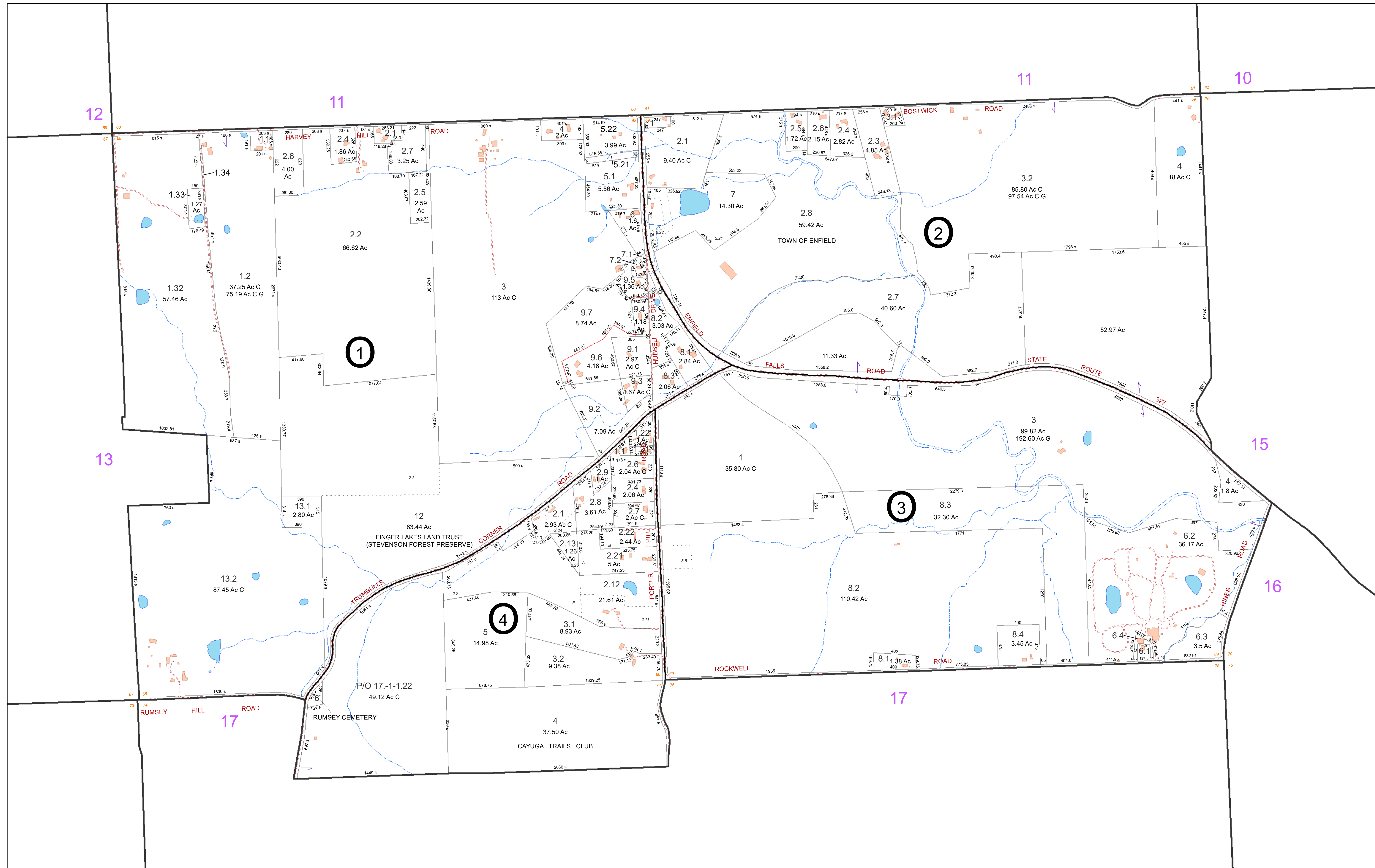
**TOWN OF ENFIELD**  
TOMPKINS COUNTY, N.Y.

North

MAP: 13

SCALE: **1" = 400'**  
(When plotted on Arch D Media)  
11 x 17" (47%), scale is 1" = 800'

MAP REVISED: 1-JULY-2023  
MAP PRINTED: 1-JULY-2023



**FOR TAX PURPOSES ONLY**  
NOT TO BE USED FOR CONVEYANCE

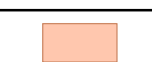






All tax maps are referenced to the New York State Plane Central Coordinate System using the 1983 North American Datum. Property lines have been registered to 1991-92 Tompkins County Digital Planimetric Base Map, and, as a result, dimensions and acreages may vary from legal descriptions. For complete legal descriptions or conveyances, please refer to the appropriate deeds and surveys.

**NOTICE OF DISCLAIMER**

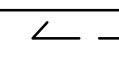






This map represents a compilation of graphical and textual information from deeds and surveys, a digital planimetric base map, and digital conversion of hand-drawn mylar maps. Errors and omissions can occur from each of these sources; each source represents a large number of records and originators of information. As a practical matter, the County does not warrant the accuracy or completeness of the information portrayed. The end user of these maps agrees to accept the data "as is" with the full knowledge that errors and omissions may exist, and to hold harmless the County for any damages that may result from an inappropriate use of these maps.

**SPECIAL DISTRICT INFORMATION**

Ithaca City School District  
Enfield Fire Protection District

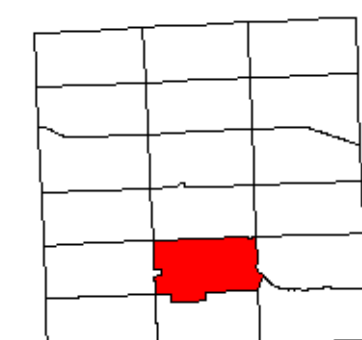
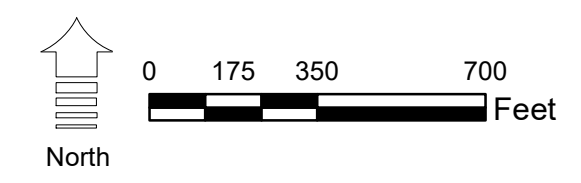
-  Building Footprint (1991-2023)
-  Curb/Pavement Line
-  Railroad
-  Hydrography
-  Special Districts
-  Municipality
-  Military Tract/Watkins & Flint Lot Number

**LEGEND**

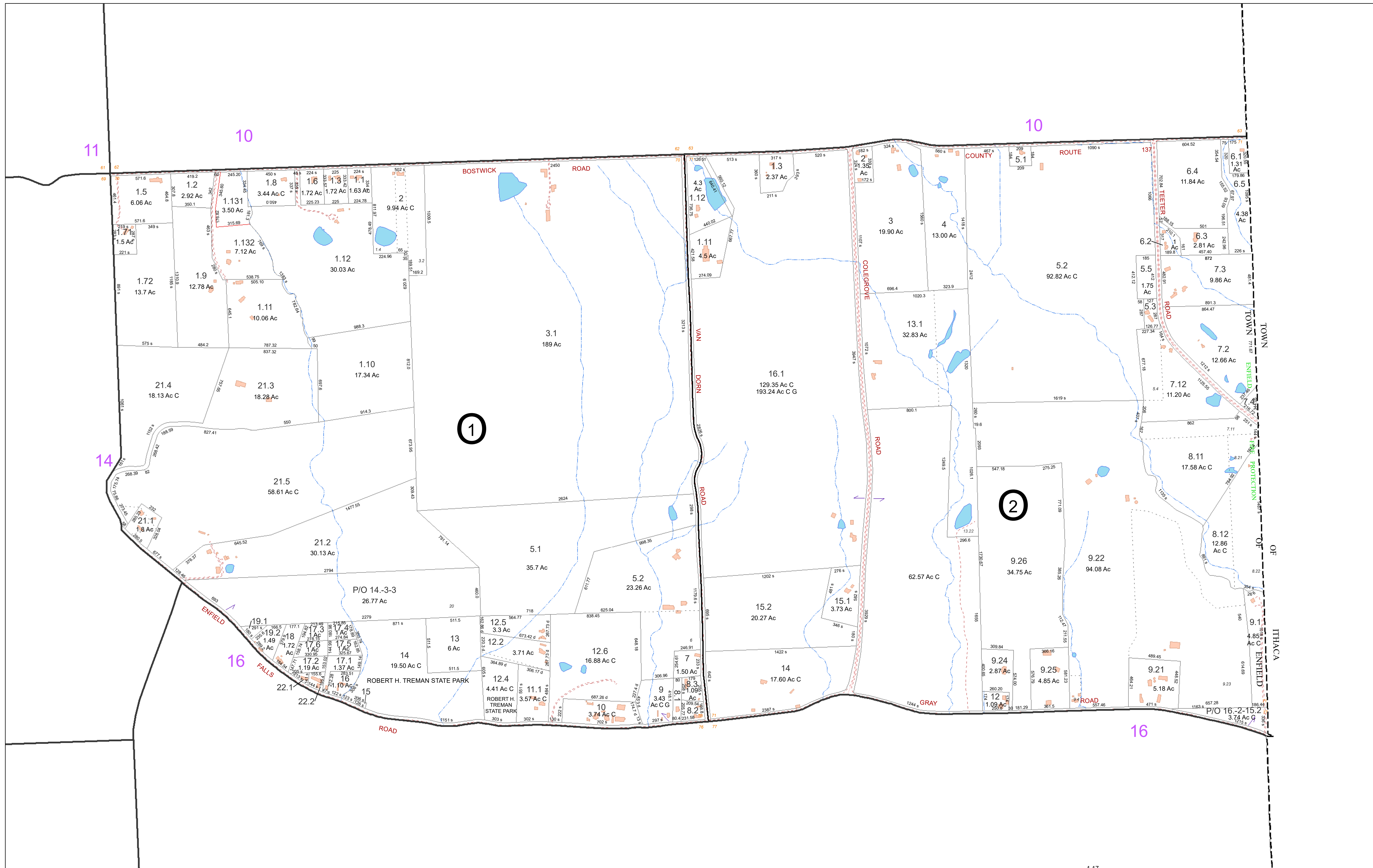
-  Parcel Connector
-  Property Line
-  Former Property Line
-  Current Year Changes
-  Block Limit
-  External Tax Map
-  Block Number

- 43.1** Parcel Lot Number
- 3 12** Previous Lot Number
- 4 3** Subdivision Lot Number
- 5.6 Ac** Deed/Survey Acreage
- 2.11 Ac C** Computed Acreage
- 18.50 Ac G** Grouped (Total) Acreage
- 100s** Scaled (Calculated) Acreage
- 100d** Deed Dimension

TOWN OF ENFIELD  
TOMPKINS COUNTY, N.Y.



MAP: 14  
SCALE: 1" = 400'  
(When plotted on Arch D Media)  
11 x 17" (47%), scale is 1" = 800'  
MAP REVISED: 1-JULY-2023  
MAP PRINTED: 1-JULY-2023



**FOR TAX PURPOSES ONLY**  
NOT TO BE USED FOR CONVEYANCE

All tax maps are referenced to the New York State Plane Central Coordinate System using the 1983 North American Datum. Property lines have been registered to 1991-92 Tompkins County Digital Planimetric Base Map, and, as a result, dimensions and acreages may vary from legal descriptions. For complete legal descriptions or conveyances, please refer to the appropriate deeds and surveys.

**NOTICE OF DISCLAIMER**  
This map represents a compilation of graphical and textual information from deeds and surveys, a digital planimetric base map, and digital conversion of hand-drawn mylar maps. Errors and omissions can occur from each of these sources; each source represents a large number of records and originators of information. As a practical matter, the County does not warrant the accuracy or completeness of the information portrayed. The end user of these maps agrees to accept the data "as is" with the full knowledge that errors and omissions may exist, and to hold harmless the County for any damages that may result from an inappropriate use of these maps.

**SPECIAL DISTRICT INFORMATION**  
Ithaca City School District  
Newfield Central School District  
Enfield Fire Protection District

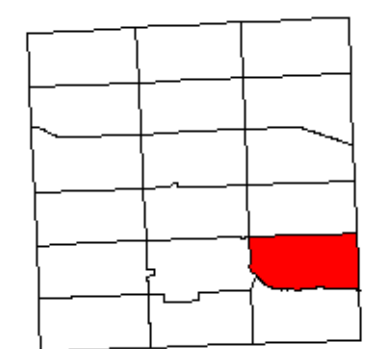
- Building Footprint (1991-2023)
- Curb/Pavement Line
- Railroad
- Hydrography
- Special Districts
- Municipality
- Military Tract/Watkins & Flint Lot Number

- LEGEND**
- Parcel Connector
  - Property Line
  - Former Property Line
  - Current Year Changes
  - Block Limit
  - External Tax Map
  - Block Number

- 43.1** Parcel Lot Number
- 3 12** Previous Lot Number
- 4.3** Subdivision Lot Number
- 5.6 Ac** Deed/Survey Acreage
- 2.11 Ac C** Computed Acreage
- 18.50 Ac G** Grouped (Total) Acreage
- 100s** Scaled (Calculated) Acreage
- 100d** Deed Dimension

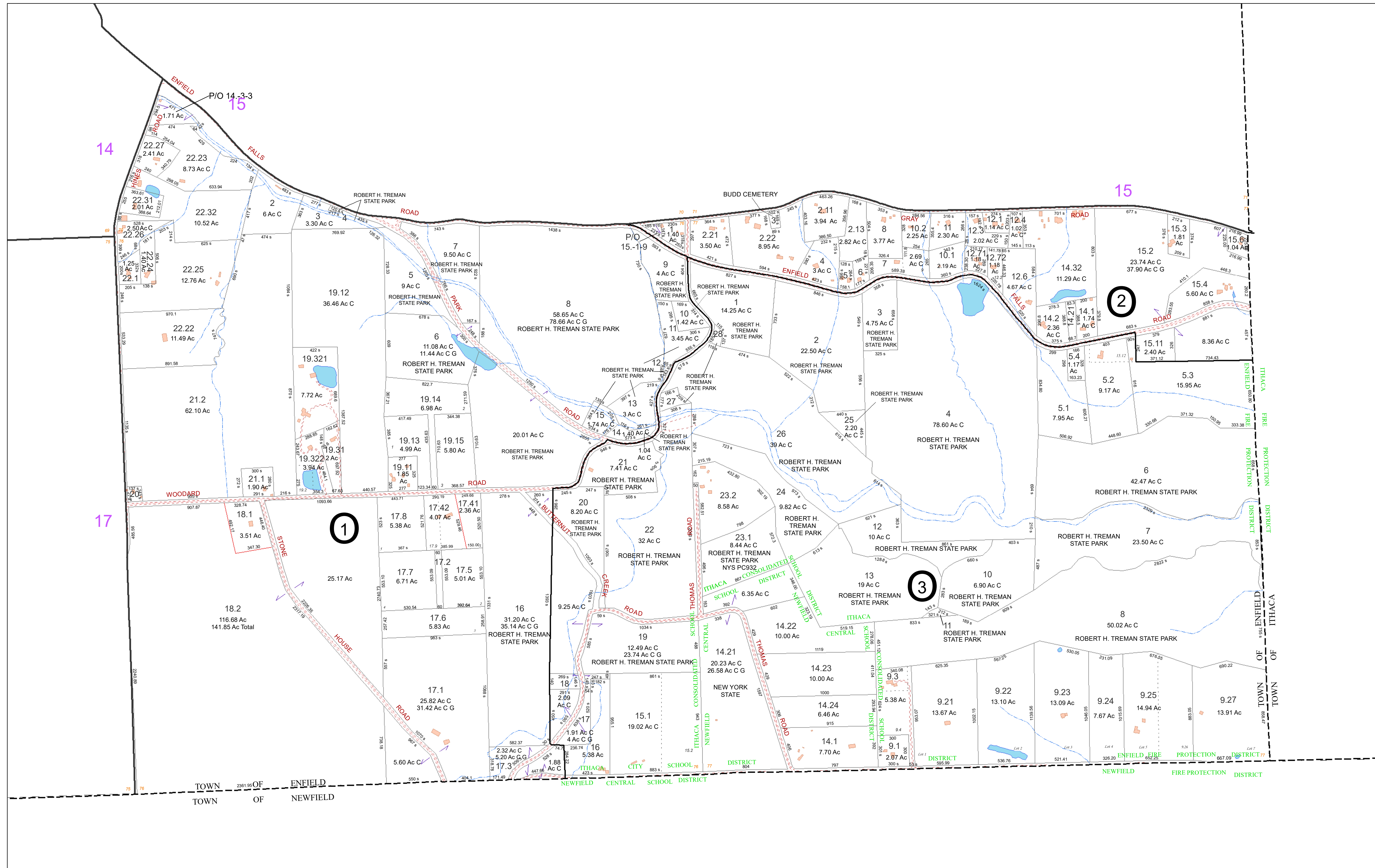
**TOWN OF ENFIELD**  
TOMPKINS COUNTY, N.Y.

0 175 350 700 Feet



MAP: 15  
SCALE: 1" = 400'  
(When plotted on Arch D Media)  
11 x 17" (47%), scale is 1" = 800'  
MAP REVISED: 1-JULY-2023  
MAP PRINTED: 1-JULY-2023





**FOR TAX PURPOSES ONLY**  
NOT TO BE USED FOR CONVEYANCE

All tax maps are referenced to the New York State Plane Central Coordinate System using the 1983 North American Datum. Property lines have been registered to 1991-92 Tompkins County Digital Planimetric Base Map, and, as a result, dimensions and acreages may vary from legal descriptions. For complete legal descriptions or conveyances, please refer to the appropriate deeds and surveys.

**NOTICE OF DISCLAIMER**  
This map represents a compilation of graphical and textual information from deeds and surveys, a digital planimetric base map, and digital conversion of hand-drawn mylar maps. Errors and omissions can occur from each of these sources; each source represents a large number of records and originators of information. As a practical matter, the County does not warrant the accuracy or completeness of the information portrayed. The end user of these maps agrees to accept the data "as is" with the full knowledge that errors and omissions may exist, and to hold harmless the County for any damages that may result from an inappropriate use of these maps.

**SPECIAL DISTRICT INFORMATION**  
Enfield Fire Protection District

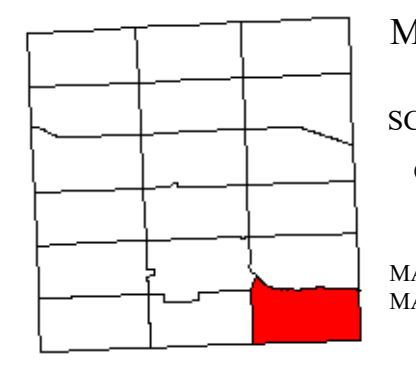
- Building Footprint (1991-2023)
- Curb/Pavement Line
- Railroad
- Hydrography
- Special Districts
- Municipality
- Military Tract/Watkins & Flint Lot Number

- LEGEND**
- Parcel Connector
  - Property Line
  - Former Property Line
  - Current Year Changes
  - Block Limit
  - External Tax Map
  - Block Number

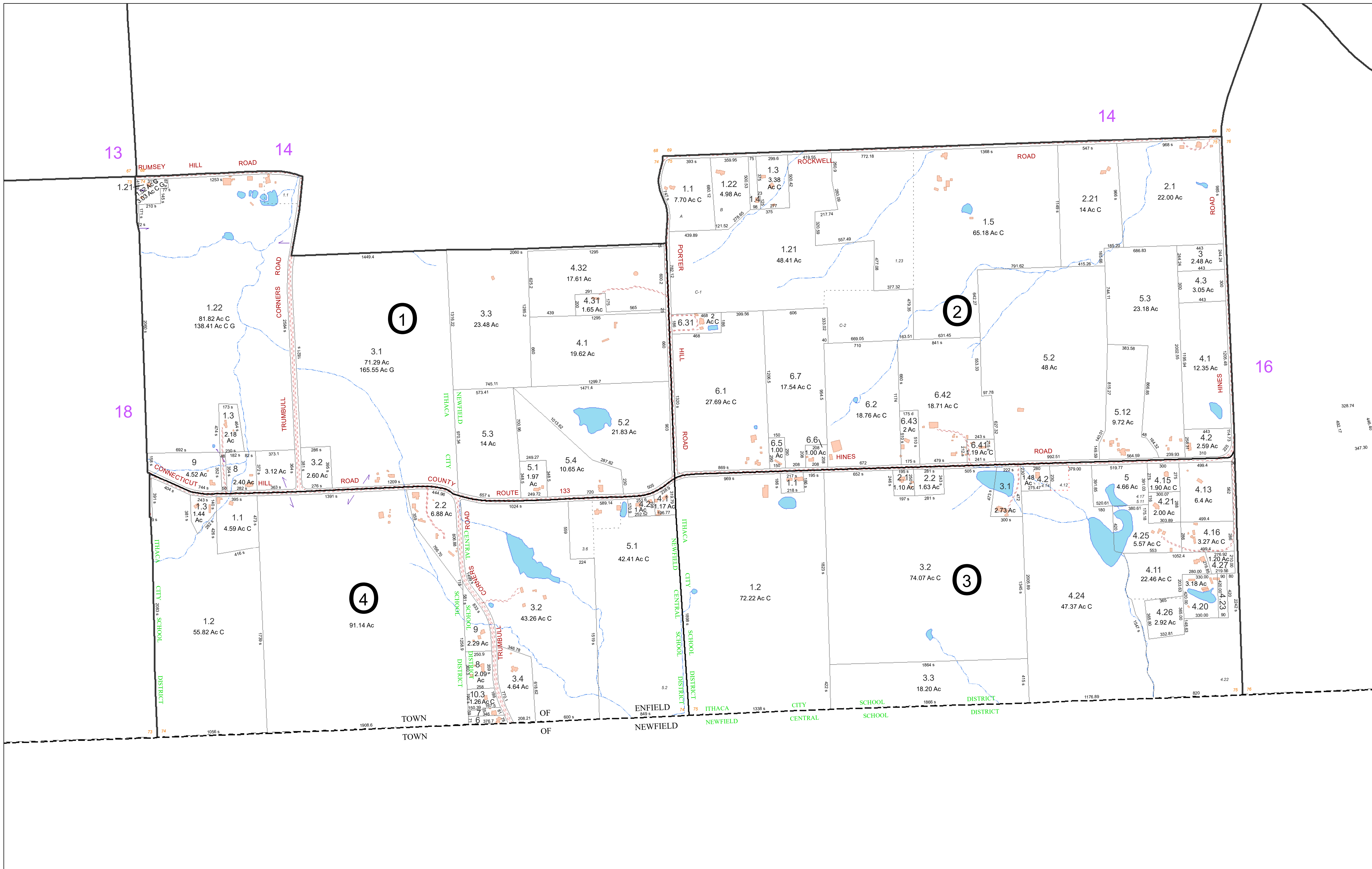
- 43.1 Parcel Lot Number
- 3.12 Previous Lot Number
- 4.3 Subdivision Lot Number
- 5.6 Ac Deed/Survey Acreage
- 2.11 Ac C Computed Acreage
- 18.50 Ac G Grouped (Total) Acreage
- 100s Scaled (Calculated) Acreage
- 100d Deed Dimension

**TOWN OF ENFIELD**  
TOMPKINS COUNTY, N.Y.

North



MAP: 16  
SCALE: 1" = 400'  
(When plotted on Arch D Media)  
11 x 17" (47%), scale is 1" = 800'  
MAP REVISED: 1-JULY-2023  
MAP PRINTED: 1-JULY-2023



**FOR TAX PURPOSES ONLY**  
NOT TO BE USED FOR CONVEYANCE

All tax maps are referenced to the New York State Plane Central Coordinate System using the 1983 North American Datum. Property lines have been registered to 1991-92 Tompkins County Digital Planimetric Base Map, and, as a result, dimensions and acreages may vary from legal descriptions. For complete legal descriptions or conveyances, please refer to the appropriate deeds and surveys.

**NOTICE OF DISCLAIMER**  
This map represents a compilation of graphical and textual information from deeds and surveys, a digital planimetric base map, and digital conversion of hand-drawn mylar maps. Errors and omissions can occur from each of these sources; each source represents a large number of records and originators of information. As a practical matter, the County does not warrant the accuracy or completeness of the information portrayed. The user of these maps agrees to accept the data "as is" with the full knowledge that errors and omissions may exist, and to hold harmless the County for any damages that may result from an inappropriate use of these maps.

**SPECIAL DISTRICT INFORMATION**  
Newfield Central School  
Ithaca City School District  
Enfield Fire Protection District

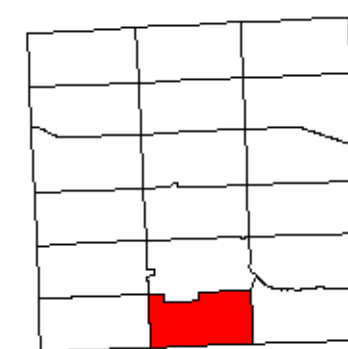
- Building Footprint (1991-2023)
- Curb/Pavement Line
- Railroad
- Hydrography
- Special Districts
- Municipality
- Military Tract/Watkins & Flint Lot Number

- LEGEND**
- Parcel Connector
  - Property Line
  - Former Property Line
  - Current Year Changes
  - Block Limit
  - External Tax Map
  - Block Number

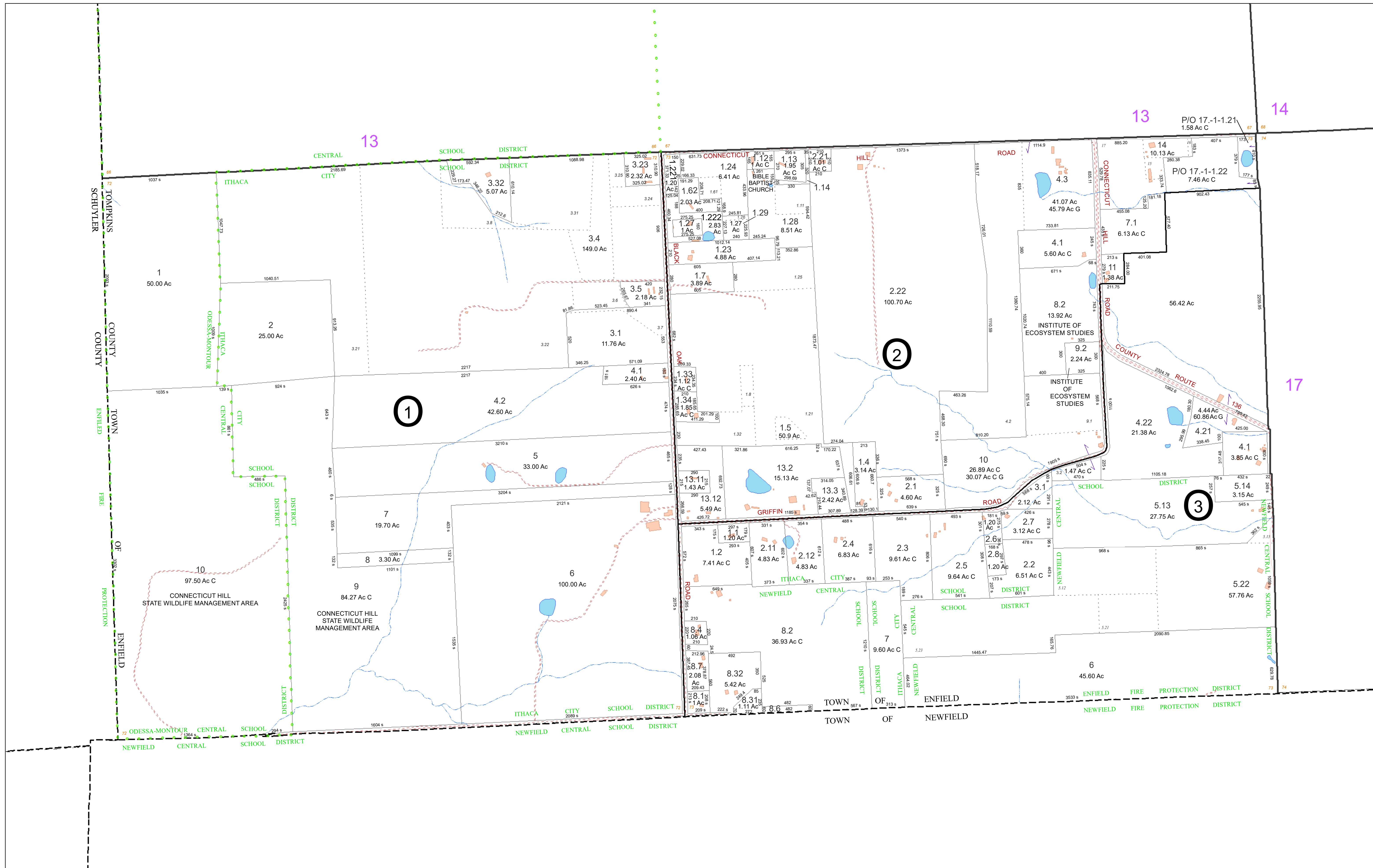
- 43.1** Parcel Lot Number
- 3 12** Previous Lot Number
- 4 3** Subdivision Lot Number
- 5.6 Ac** Deed/Survey Acreage
- 2.11 Ac C** Computed Acreage
- 18.50 Ac G** Grouped (Total) Acreage
- 100s** Scaled (Calculated) Acreage
- 100d** Deed Dimension

**TOWN OF ENFIELD**  
TOMPKINS COUNTY, N.Y.

0 175 350 700 Feet



MAP: 17  
SCALE: 1" = 400'  
(When plotted on Arch D Media)  
11 x 17" (47%), scale is 1" = 800'  
MAP REVISED: 1-JULY-2023  
MAP PRINTED: 1-JULY-2023



**FOR TAX PURPOSES ONLY**  
NOT TO BE USED FOR CONVEYANCE

All tax maps are referenced to the New York State Plane Central Coordinate System using the 1983 North American Datum. Property lines have been registered to 1991-92 Tompkins County Digital Planimetric Base Map, and, as a result, dimensions and acreages may vary from legal descriptions. For complete legal descriptions or conveyances, please refer to the appropriate deeds and surveys.

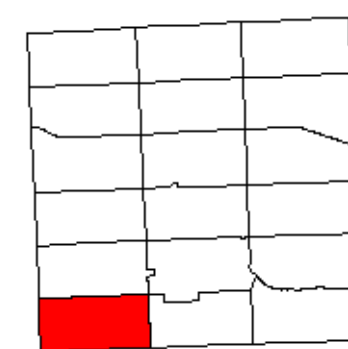
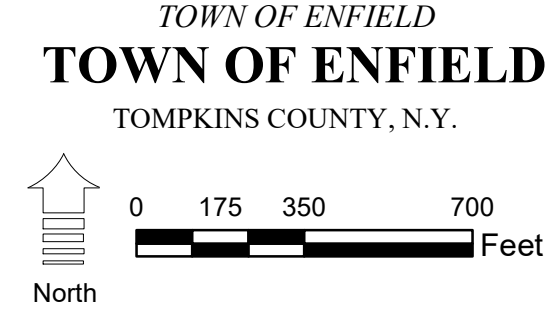
**NOTICE OF DISCLAIMER**  
This map represents a compilation of graphical and textual information from deeds and surveys, a digital planimetric base map, and digital conversion of hand-drawn mylar maps. Errors and omissions can occur from each of these sources; each source represents a large number of records and originators of information. As a practical matter, the County does not warrant the accuracy or completeness of the information portrayed. The end user of these maps agrees to accept the data "as is" with the full knowledge that errors and omissions may exist, and to hold harmless the County for any damages that may result from an inappropriate use of these maps.

**SPECIAL DISTRICT INFORMATION**  
Ithaca City School District  
Newfield Central School District  
Odessa-Montour Central School District  
Enfield Fire Protection District

- Building Footprint (1991-2023)
- Curb/Pavement Line
- Railroad
- Hydrography
- Special Districts
- Municipality
- Military Tract/Watkins & Flint Lot Number

- LEGEND**
- Parcel Connector
  - Property Line
  - Former Property Line
  - Current Year Changes
  - Block Limit
  - External Tax Map
  - Block Number

- 43.1** Parcel Lot Number
- 3.12** Previous Lot Number
- 4.3** Subdivision Lot Number
- 5.6 Ac** Deed/Survey Acreage
- 2.11 Ac C** Computed Acreage
- 18.50 Ac G** Grouped (Total) Acreage
- 100s** Scaled (Calculated) Acreage
- 100d** Deed Dimension



MAP: 18  
SCALE: 1" = 400'  
(When plotted on Arch D Media)  
11 x 17" (47%), scale is 1" = 800'  
MAP REVISED: 1-JULY-2023  
MAP PRINTED: 1-JULY-2023