

# Tompkins County ADA Transition Plan - 2017

Based on the 2010 ADA Standards for Accessible Design

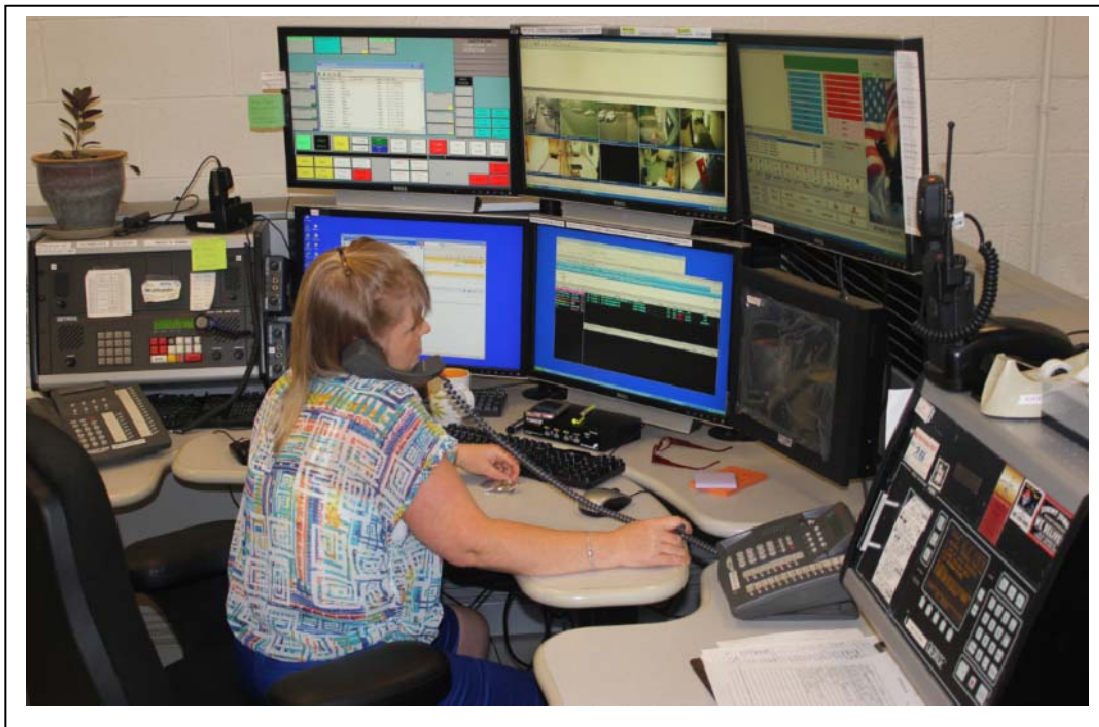
**Project:** Tompkins County Transition Plan 2017

**Building:** Emergency Response Center (ERC)

**Location:** 92 Brown Road, Ithaca NY

**Date:** May 17, 2017

**Surveyor(s):** Alan Lockett – Assistant Director of Facilities



## ADA Checklist for Existing Facilities

# Priority 1 – Approach & Entrance

Based on the 2010 ADA Standards for Accessible Design




**All facilities should have at a minimum an accessible route to a main building entrance.**





Institute for Human Centered Design  
[www.HumanCenteredDesign.org](http://www.HumanCenteredDesign.org) 2014



ADA National Network  
[www.ADAchecklist.org](http://www.ADAchecklist.org)

Priority 1 – Approach & Entrance			Comments
1.1	Is there at least one route from site arrival points (parking, passenger loading zones, public sidewalks and public transportation stops) that does not require the use of stairs?	Yes	
1.2	If parking is provided for the public, are an adequate number of accessible spaces provided? [208.2]	Yes Total #: see comments Accessible #: 1	ERC has 5 dedicated spaces. The balance of the lot is open for parking by as many as 40 vehicles which may include visitors or staff of the Crash Fire Rescue building.
1.3	Of the accessible spaces, is at least one a van accessible space? [208.2.4]	No	
1.4	Are accessible spaces at least 8 feet wide with an access aisle at least 5 feet wide? [502.2, 502.3].	Yes	
1.5	Is the van accessible space: At least 11 feet wide with an access aisle at least 5 feet wide?	NA	
1.6	Are the access aisles marked so as to discourage parking in them? [502.3.3]	No	This is a gravel lot with not line stripping. Eight staff parking are in the rear of the building. This lot is paved.
1.7	Is the slope of the accessible parking spaces and access aisles no steeper than 1:48 in all directions? [502.4]	Yes	

1.8	Do the access aisles adjoin an accessible route? [502.3]	NA	No access aisles.
1.9	Are accessible spaces identified with a sign that includes the International Symbol of Accessibility? Is the bottom of the sign at least 60 inches above the ground? [502.6]	Yes  Yes	
1.10	Is the route stable, firm and slip-resistant? [302.1]	Yes	
1.11	If the route is greater than 200 feet in length and less than 60 inches wide, is there a passing space no less than 60 x 60 inches? [403.5.3]	NA	
1.12	Is the running slope no steeper than 1:20, i.e. for every inch of height change there are at least 20 inches of route run? [403.3]	Yes	
1.13	Is the cross slope no steeper than 1:48? [403.3]	Yes	
<b>Curb Ramps</b>			
1.14	If the accessible route crosses a curb, is there a curb ramp? [402.2]	No	Install curb ramp. See photo above (1.1). 4" curb.
1.15	Is the running slope of the curb ramp no steeper than 1:12, i.e. for every inch of height change there are at least 12 inches of curb ramp run? [406.1, 405.2]	NA	
1.16	Is the curb ramp, excluding flares, at least 36 inches wide? [406.1, 405.5]	NA	

Ramps <input type="checkbox"/> YES <input checked="" type="checkbox"/> NO			
1.17-1.28	If there is a ramp is it at least 36 inches wide? [405.5]	NA	
<b>Entrance</b>			
1.29	Is the main entrance accessible?	Yes	
1.30	If the main entrance is not accessible, is there an alternative accessible entrance?  Can the alternative accessible entrance be used independently and during the same hours as the main entrance?	No  No	Alternate entrances exist but only for staff. 
1.31	Do all inaccessible entrances have signs indicating the location of the nearest accessible entrance? [216.6]	No	The main entrance is obvious and unmistakable.
1.32	If not all entrances are accessible, is there a sign at the accessible entrance with the International Symbol of Accessibility?	NA	
1.33	Is the clear opening width of the accessible entrance door at least 32 inches, between the face of the door and the stop, when the door is open 90 degrees? [404.2.3]	Yes Measurement: 34"	
1.34	If there is a front approach to the pull side of the door, is there at least 18 inches of maneuvering clearance beyond the latch side plus at least 60 inches clear depth?	Yes	
1.35	If the threshold is vertical is it no more than 1/2 inch high?	Yes Measurement: 1/8"	

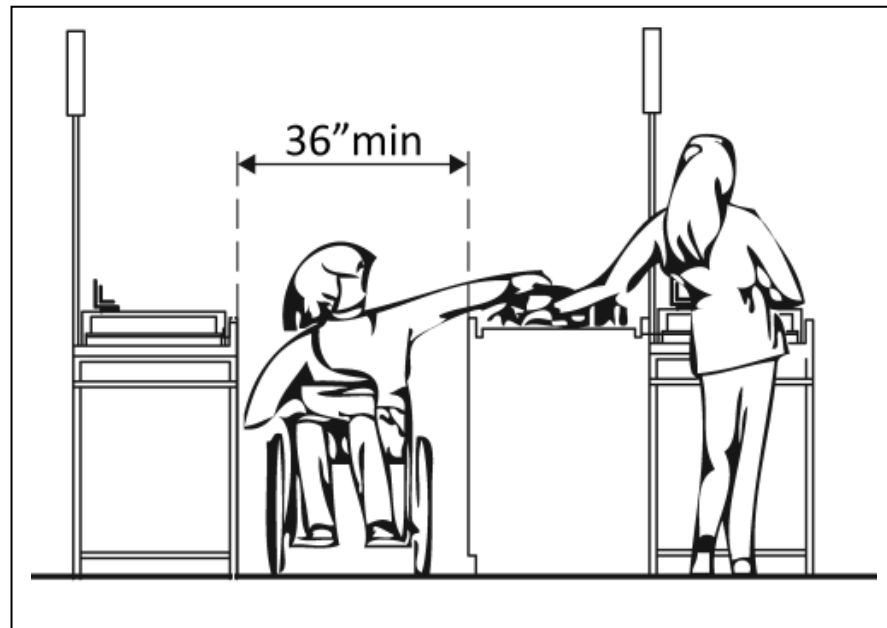
<b>1.36</b>	Is the door equipped with hardware that is operable with one hand and doesn't require firm grasping, pinching or twisting the wrist?	Yes	U-pull.
<b>1.37</b>	Are the operable parts of the door hardware no less than 34 inches and no greater than 48 inches above the floor or ground surface? [404.2.7]	Yes Measurement: 36" – 43"	
<b>1.38</b>	If the door has a closer, does it take at least 5 seconds to close from an open position of 90 degrees [404.2.8]	No Measurement: 4	Adjust closer at main entrance.
<b>1.39</b>	If there are two doors in a series, e.g. vestibule, is the distance between the doors at least 48 inches plus the width of the doors when swinging into the space? [404.2.6]	Yes Measurement: 57"	
<b>1.40</b>	If provided at the building entrance, are carpets or mats no higher than ½ inch thick? [302.2]	Yes Measurement: ¼"	



## ADA Checklist for Existing Facilities

# Priority 2 – Access to Goods & Services

Based on the 2010 ADA Standards for Accessible Design



**The layout of the building should allow people with disabilities to obtain goods and services and to participate in activities without assistance.**



Institute for Human Centered Design  
[www.HumanCenteredDesign.org](http://www.HumanCenteredDesign.org) 2014




ADA National Network  
[www.ADAchecklist.org](http://www.ADAchecklist.org)

Priority 2 – Access to Goods & Services			Comments
2.1	Does the accessible entrance provide direct access to the main floor, lobby and elevator? [See 2010 ADA Standards for Accessible Design – 206.4]	Yes	Although there are no goods and services at this location. There are two conference rooms that are used by visitors to the building.
<b>Interior Accessible Route</b>			
2.2	Are all public spaces on at least one accessible route? [206.2.4]	Yes	
2.3	Is the route stable, firm and slip-resistant? [40.2, 302.1]	Yes	
2.4	Is the route at least 36 inches wide? [403.5.1]	Yes Measurement: 76"	
2.5	If the route is greater than 200 feet in length and less than 60 inches wide, is there a passing space no less than 60 x 60 inches? [403.5.3]	NA	
2.6	Is the running slope no steeper than 1:20, i.e. for every inch of height change there are at least 20 inches of route run? [403.3]	Yes	
2.7	Is the cross slope no steeper than 1:48? [403.3]	Yes	
2.8	Do all objects on circulation paths through public areas, e.g. fire extinguishers, drinking fountains, signs, etc., protrude no more than 4 inches into the path? [307.4]	Yes	
2.9	Are there elevators or platform lifts to all public stories?	No	Single story building.
Ramps <input type="checkbox"/> YES <input checked="" type="checkbox"/> NO			
2.10-2.21	If there is a ramp, is it at least 36 inches wide? [405.5]	NA	



<b>Elevators – Full Size &amp; LULA (limited use, limited application)</b>		<input type="checkbox"/> YES	<input checked="" type="checkbox"/> NO
<b>2.22-2.30</b>	If there is a full size or LULA elevator, are the call buttons no higher than 54 inches above the floor? [407.2.1.1]	NA	
<b>Platform Lifts</b>			
		<input type="checkbox"/> YES	<input checked="" type="checkbox"/> NO
<b>2.31</b>	If a lift is provided, can it be used without assistance from others? [410.1]	NA	
<b>Signs</b> “Tactile characters” are read using touch, i.e. raised characters and Braille.			
<b>2.32</b>	If there are signs designating permanent rooms and spaces [216.2]	Yes	White on black.
	Do text characters contrast with their backgrounds? [703.5]	Yes	
	Are text characters raised / Braille? [703.2]	No	
<b>2.33</b>	If there are signs that provide direction to or information about interior spaces:		The only public space is a conference room and that is located immediately off the main entrance.
	Do text characters contrast with their backgrounds? [703.5.1]	No	
	Is the sign mounted so that characters are at least 40 inches above the floor? [703.5.6]	No	
<b>Interior Doors – conference rooms, etc.</b>			
<b>2.34</b>	Is the door opening width at least 32 inches clear, between the face of the door and the stop, when the door is open 90 degrees? [404.2.3]	Yes Measurement: 33"	Conference rooms (2).
<b>2.35</b>	If there is a front approach to the pull side of the door, is there at least 18 inches of maneuvering clearance beyond the latch side plus at least 60 inches clear depth?	Yes	
<b>2.36</b>	Is the threshold no more than ¾ inch high with the top ½ inch beveled no steeper than 1:2, [404.2.5, 303.2]	NA	No threshold.
<b>2.37</b>	Is the door equipped with hardware that is operable with one hand and does not require tight grasping, pinching or twisting of the wrist?	Yes	
	Door handle?	Yes	

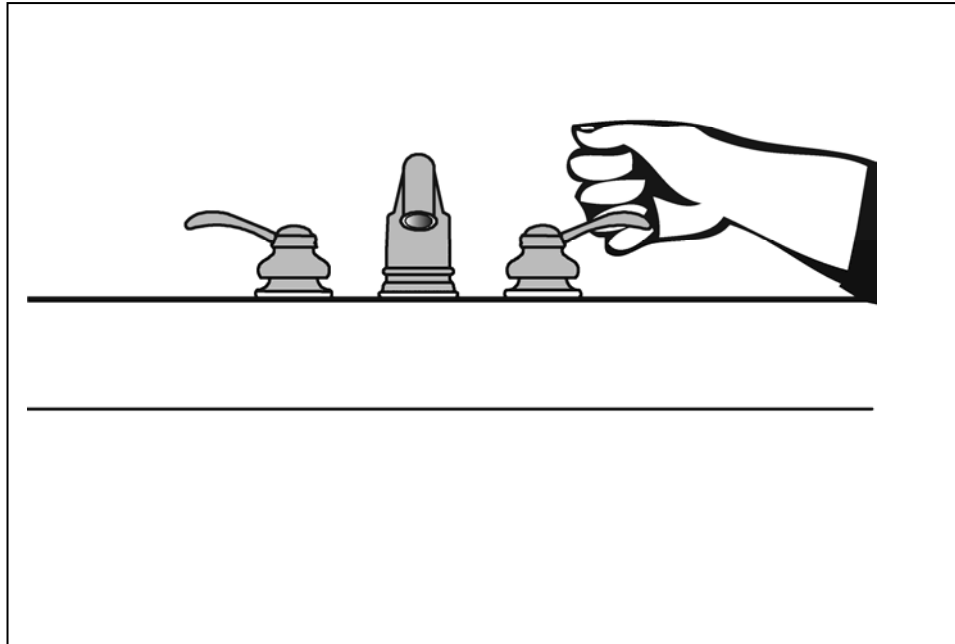
2.38	Are the operable parts of the hardware no less than 34 inches and no greater than 48 inches above the floor? [404.2.7]	Yes Measurement: 41"	
2.39	Can the door be opened easily (5 pounds maximum force)? [404.2.9]	Yes	
2.40	If the door has a closer, does it take at least 5 seconds to close from an open position of 90 [404.2.8.1]	Yes Measurement: 6	
<b>Rooms and Spaces – Conference Room</b>			
2.41	Are aisles and pathways to and services, and to one of each type of sales and service counters, at least 36 inches wide? [403.5.1]	NA	
2.42	Are floor surfaces stable, firm and slip resistant? [302.1]	Yes	
2.43	If there is carpet: Is it no higher than ½ inch?	NA	
<b>Controls – light switches, security and intercom systems, emergency/alarm boxes, etc.</b>			
2.44	Is there a clear floor space at least 30 inches wide by at least 48 inches long for a forward or parallel approach? [305.3]	Yes	
	Are the operable parts no higher than 48 inches above the floor?*[309.3, 308]	No	
2.45	Can the control be operated with one hand and without tight grasping, pinching, or twisting of the wrist? [309.4]	Yes	
<b>Seating - conference room</b>			
2.46	Are at least 5%, but no fewer than one, of seating and standing spaces accessible for people who use wheelchairs? [226.1]	Yes	Conference rooms do not have fixed seating. 

2.47	Is there a route at least 36 inches wide to accessible seating? [403.5.1]	Yes	Open floor plan in conference rooms.
2.48	At the accessible space(s), is the top of the accessible surface no less than 28 inches and no greater than 34 inches above the floor? [902.3]	Yes	Typical table height 30"
2.49	If there is a check writing surface, is the top no less than 28 inches and no greater than 34 inches above the floor? [904.3.3]	NA	

# The ADA Checklist for Existing Facilities

## Priority 3 - Toilet Rooms

Based on the 2010 ADA Standards for Accessible Design




**When toilet rooms are open to the public they should be accessible to people with disabilities.**




Institute for Human Centered Design  
[www.HumanCenteredDesign.org](http://www.HumanCenteredDesign.org) 2014



ADA National Network  
[www.ADAchecklist.org](http://www.ADAchecklist.org)

Priority 3 – Toilet Rooms			Comments
3.1	If toilet rooms are available to the public, is at least one toilet room accessible? (Either one for each sex, or one unisex.)	Yes	M/F accessible toilet rooms.
3.2	Are there signs at inaccessible toilet rooms that give directions to accessible toilet rooms?	Yes	
<b>Accessible Route</b>			
3.3	Is there an accessible route to the accessible toilet room? [206.2.4]	Yes	
<b>Signs at Toilet Rooms</b>			
3.4	Do text characters contrast with their backgrounds? [703.5]	Yes	White on black.  Signs mounted on hinge side for maximum visibility – side closest to the hallway.
	Are text characters raised? [703.2]	Yes	
	Is there Braille? [703.3]	Yes	
	Is the sign mounted latch side of the door? [703.4.2]	No	

Entrance			
3.5	Is the door opening width at least 32 inches clear, between the face of the door and the stop, when the door is open 90 degrees? [404.2.3]	Yes Measurement: 33 ½"	
3.6	If there is a front approach to the pull side of the door is there at least 18 inches of maneuvering clearance beyond the latch side plus 60 inches clear depth?	Yes	
3.7	If the threshold is vertical is it no more than ¾ inch high with the top ½ inch beveled no steeper than 1:2	Yes Measurement: ½"	
3.8	Is the door equipped with hardware that is operable with one hand and does not require tight grasping, pinching or twisting of the wrist?	Yes	Lever handle.
3.9	Are the operable parts of the door hardware mounted no less than 34 inches and no greater than 48 inches above the floor? [404.2.7]	Yes Measurement: 40"	
3.10	Can the door be opened easily (5 pounds maximum force)? [404.2.9]	Yes	
3.11	If there are two doors in a series, e.g. vestibule, is the distance between the doors at least 48 inches [404.2.6]	NA	
3.12	If there is a privacy wall and the door swings out, is there at least 24 inches of maneuvering clearance beyond the door latch side and 42 inches to the privacy wall? [404.2.4]	NA	
3.13	If there is a privacy wall and the door swings in, is there at least 24 inches of maneuvering clearance beyond the door latch side and at least 48 inches to the privacy wall if there is no door closer or at least 54 inches if there is a door closer? [404.2.4]	NA	

<b>Toilet Room Accessories</b>			
<b>3.14</b>	Is there a clear path to at least one of each type of fixture, e.g. lavatory, hand dryer, etc., that is at least 36 inches wide?[403.5.1]	Yes	
<b>3.15</b>	Is there clear floor space available for a person in a wheelchair to turn around, i.e. a circle at least 60 inches in diameter or a T-shaped space within a 60-inch square? [603.2.1]	Yes	
<b>3.16</b>	If the mirror is over a lavatory or countertop, is the bottom edge of the reflecting surface no higher than 40 inches above the floor? surface no higher than 35 inches above the floor?*[603.3]	Yes Measurement: 40"	
<b>3.17</b>	If there is a coat hook, is it no less than 15 inches and no greater than 48 inches above the floor?*[603.4]	No Measurement: 57"	Provide additional accessible hook in M/F toilet stalls.
<b>Toilet Rooms</b>			
<b>3.18</b>	Does at least one lavatory have a clear floor space for a forward approach at least 30 inches wide and 48 inches long? [606.2]	Yes	
<b>3.19</b>	Are pipes below the lavatory insulated or otherwise configured to protect against contact? [606.5]	Yes	
<b>3.20</b>	Can the faucet be operated without tight grasping, pinching, or twisting of the wrist?	Yes	Lever faucet.



<b>Soap Dispensers and Hand Dryers</b>			
<b>3.21</b>	Are the operable parts of the soap dispenser, paper towels, hand dryer No higher than 48 inches above the floor? [308.2.2]	Yes	
<b>Water Closets in Single-User Toilet Rooms and Compartments (Stalls)</b>			
<b>3.22</b>	Is the centerline of the water closet no less than 16 inches and no greater than 18 inches from the side wall or partition? [604.2]	Yes Measurement: 17 ½"	
<b>3.23</b>	Is the height of the water closet no less than 17 inches and no greater than 19 inches above the floor measured to the top of the seat? [604.4]	Yes Measurement: 19"	
<b>3.24</b>	If the flush control is hand operated, can it be operated with one hand and without tight grasping, pinching, or twisting of the wrist?	Yes	Lever type.
<b>3.25</b>	Is the flush control on the open side of the water closet? [604.6]	Yes	
<b>3.26</b>	Is the toilet paper dispenser at front of the water closet and easily accessible [604.7]	Yes	
<b>3.27</b>	Does the dispenser allow continuous paper flow? [604.7]	Yes	
<b>Toilet Compartments (Stalls)</b>			
<b>3.28</b>	Is the door opening width at least 32 inches clear, between the face of the door and the stop, when the door is open 90 degrees? [604.8.1.2]	Yes Measurement: 34"	
<b>3.29</b>	If there is a front approach to the pull side of the door, is there at least 18 inches of maneuvering clearance beyond the latch side plus 60 inches clear depth? [604.8.1.2]	Yes	
<b>3.30</b>	Is the door self-closing? [604.8.1.2]	No	No closer.

3.31	Are there door pulls on both sides of the door that are operable with one hand and do not require tight grasping pinching or twisting of the wrist? [604.8.1.2]	Yes	U-pull.
3.32	Is the lock operable with one hand and without tight grasping, pinching or twisting of the wrist? [309.4]	Yes	
3.33	Are the operable parts of the door hardware mounted no less than 34 inches and no greater than 48 inches above the floor? [404.2.7]	Yes Measurement: 41"	
3.34	Is the compartment at least 60 inches wide? [604.8.1.1]	Yes Measurement: 61"	
3.35	If the water closet is floor mounted, is the compartment at least 59 inches deep? [604.8.1.1]	Yes Measurement: 96"	

## ADA Checklist for Existing Facilities

# Priority 4 – Additional Access

Based on the 2010 ADA Standards for Accessible Design




**The layout of the building should allow people with disabilities to obtain goods and services and to participate in activities without assistance.**



Institute for Human Centered Design  
[www.HumanCenteredDesign.org](http://www.HumanCenteredDesign.org) 2014



ADA National Network  
[www.ADAchecklist.org](http://www.ADAchecklist.org)

Priority 4 – Additional Access		Comments	
4.1	Does at least one drinking fountain have a clear floor space at least 30 inches wide x at least 48 inches long centered in front of it for a forward approach?*[See 2010 ADA Standards for Accessible Design – 602.2]	Yes	
4.2	Can the control be operated with one hand and without tight grasping, pinching or twisting of the wrist?	Yes	
4.3	Is the spout outlet no higher than 36 inches above the floor? [602.4]	Yes Measurement: 36"	Lower fountain 36" spout. Higher fountain 41" spout.
4.4	If there is more than one drinking fountain, is there at least one for standing persons? [211.2]	Yes	
4.5	If there are fire alarm systems, do they have both flashing lights and audible signals? [702.1]	Yes	

# ADA Checklist for Existing TC Facilities

Summary of items that could be improved.

**Building:**

**Date Inspected:**

**Priority 1**

Item	Correction	Target Date	Date Completed
1.38	Main entrance door closes too quickly. Adjust closer.	July 2017	

**Priority 2**

Item	Correction	Target Date	Date Completed
None			

**Priority 3**

Item	Correction	Target Date	Date Completed
3.17	Provide additional coat hooks in M/F toilet stalls.	August 2017	

**Priority 4**

Item	Correction	Target Date	Date Completed
None			