

## 9.15 Town of Newfield

This section presents the jurisdictional annex for the Town of Newfield. It includes resources and information to assist public and private sectors to reduce losses from future hazard events. This annex is not guidance of what to do when a disaster occurs. Rather, this annex concentrates on actions that can be implemented prior to a disaster to reduce or eliminate damage to property and people. This annex includes a general overview of the Town of Newfield and who in the Town participated in the planning process; an assessment of the Town of Newfield’s risk and vulnerability; the different capabilities utilized in the Town; and an action plan that will be implemented to achieve a more resilient community.

### 9.15.1 Hazard Mitigation Planning Team

The following individuals have been identified as the Town of Newfield’s hazard mitigation plan primary and alternate points of contact.

*Table 9.15-1. Hazard Mitigation Planning Team*

Primary Point of Contact	Alternate Point of Contact
Michael Allinger, Supervisor 166 Main St., Newfield, NY 14867 607-564-3669 <a href="mailto:supervisor@newfieldny.org">supervisor@newfieldny.org</a>	Christine Laughlin, Deputy Supervisor 166 Main St., Newfield, NY 14867 607-564-9953 <a href="mailto:claughlin@newfieldny.org">claughlin@newfieldny.org</a>
NFIP Floodplain Administrator	
Alan Teeter, Code Officer 166 Main St., Newfield, NY 14867 607-327-1849 <a href="mailto:codeofficer@newfieldny.org">codeofficer@newfieldny.org</a>	

### 9.15.2 Municipal Profile

The Town of Newfield is located in the southwest corner of Tompkins County, bordered by the Town of Enfield and Ithaca to the north, and Danby to the east. Newfield is the most forested of the Towns in Tompkins County, home to the Connecticut Hill State Wildlife Management Area, Cliffside State Forest, Arnot Teaching and Research Forest, and Newfield State Forest. The Town of Newfield is home to the only covered bridge in Tompkins County, and the oldest covered bridge in New York State still in use, built in 1853. The Covered Bridge was listed on the National Register of Historic Places in 2000.

The Newfield area was settled by British pioneers around 1800, and shortly after established the Village of Florence. Florence was part of the Town of Spencer in Tioga County until 1811 when it separated from Spencer and renamed Cayuta. In 1822, it was transferred into Tompkins County and renamed Newfield. Agriculture



was the main industry, and farmers sold wheat, corn, and milk to nearby Ithaca through the 1850s. However, soil exhaustion from over farming, interstate competition, and Civil War losses, led to farm abandonment and population losses until the 20th century. During the Great Depression, the federal and state government bought thousands of acres of abandoned farmland in Newfield for conservation and reforestation, creating the Newfield State Forest and Tompkins County Forest. Farming is the Town’s main industry, although it has declined in recent years.

Newfield is governed by a Town Board comprised of four elected At-Large members, and an elected Town Supervisor. Elections are held bi-annually, with officials being elected on rotating four-year terms.

### 9.15.3 Growth/Development Trends

Understanding how past, current, and projected development patterns have or are likely to increase or decrease risk in hazard areas is a key component to understanding a jurisdiction’s overall risk to its hazards of concern. Table 9.15-2 summarizes recent and expected future development trends, including major residential/commercial development and major infrastructure development. Figure 9.15-1 at the end of this annex illustrates the geographically delineated hazard areas and the location of potential new development, where available.

According to the 2014-2018 American Community Survey, the population for the Town of Newfield is 5,218.

*Table 9.15-2. Recent and Expected Future Development*

Type of Development	2014		2015		2016		2017		2018	
<b>Number of Building Permits for New Construction Issued Since the Previous HMP* (within regulatory floodplain/ Outside regulatory floodplain)</b>										
	<b>Total</b>	<b>Within SFHA**</b>	<b>Total</b>	<b>Within SFHA</b>	<b>Total</b>	<b>Within SFHA</b>	<b>Total</b>	<b>Within SFHA</b>	<b>Total</b>	<b>Within SFHA</b>
<b>Single Family</b>	20	N/A	19	N/A	10	N/A	11	N/A	17	N/A
<b>Multi-Family</b>	1	N/A	1	N/A	1	N/A	0	N/A	0	N/A
<b>Other (commercial, mixed-use, etc.)</b>	1	N/A	1	N/A	2	N/A	6	N/A	1	N/A
<b>Total</b>	22	N/A	21	N/A	13	N/A	17	N/A	18	N/A
Property or Development Name	Type of Development		# of Units / Structures		Location (address and/or block and lot)		Known Hazard Zone(s)*		Description / Status of Development	
<b>Recent Major Development and Infrastructure from 2014 to Present</b>										
None	-	-	-	-	-	-	-	-	-	-



Type of Development	2014	2015	2016	2017	2018
None	-	-	-	-	-
<b>Known or Anticipated Major Development and Infrastructure in the Next Five (5) Years</b>					
None	-	-	-	-	-
None	-	-	-	-	-

SFHA Special Flood Hazard Area (1% flood event)

\* Only location-specific hazard zones or vulnerabilities identified.

\*\*Not recorded

## 9.15.4 Capability Assessment

The Town of Newfield performed an inventory and analysis of existing capabilities, plans, programs, and policies that enhance its ability to implement mitigation strategies. Section 6 (Capability Assessment) describes the components included in the capability assessment and their significance for hazard mitigation planning. This section summarizes the following findings of the assessment:

- An assessment of planning, legal and regulatory capabilities.
- Development and permitting capabilities.
- An assessment of administrative and technical capabilities.
- An assessment of fiscal capabilities.
- An assessment of education and outreach capabilities.
- Classification under various community mitigation programs.
- The community's adaptive capacity for the impacts of climate change.
- Information on National Flood Insurance Program (NFIP) compliance.

For a community to succeed in reducing long-term risk, hazard mitigation must be integrated into the day-to-day local government operations. As part of this planning effort, planning/policy documents were reviewed, and each jurisdiction was surveyed to obtain a better understanding of their progress in plan integration. Areas with current mitigation integration are summarized in Capability Assessment (Section 9.15.4). The Town of Newfield identified specific integration activities that will be incorporated into municipal procedures are included in the updated mitigation strategy. **This is shown in bold text in the comments box where appropriate.** Appendix I provides the results of the planning/policy document review and the answers to integration survey questions.

### 9.15.4.1 Planning, Legal, and Regulatory Capability

The table below summarizes the regulatory tools that are available to the Town of Newfield and where hazard mitigation has been integrated.



Table 9.15-3. Planning, Legal, and Regulatory Capability

	Does your municipality have this? (Yes/No)	Code Citation and Date (code chapter, name, date, link)	Authority (local, county, state, federal)	Department / Agency Responsible	State Mandated
<b>Codes, Ordinances, &amp; Requirements</b>					
Building Code	Yes	The Uniform Code (19 NYCRR Parts 1219 to 1229)	Local and State	Local Code Department	Yes
<p>Comments: NYS Uniform and Energy Code 2020; Regulated at local and state levels. The Uniform Code (19 NYCRR Parts 1219 to 1229) now includes the 2015 editions of the code books published by the International Code Council (the "2015 I-Codes"), as amended by the publication entitled the 2017 Uniform Code Supplement (publication date: July 2017).. Article 18 of the Executive Law (§§ 370 through 383) establishes the State Fire Prevention and Building Code Council, directs the Code Council to promulgate and maintain the Uniform Code, and charges each city, town, and village in the State (with the exception of the City of New York) with the duty of administering and enforcing the Uniform Code within its municipal boundaries.</p>					
Zoning Code	No	-	Local	None	No
<p><b>Comment:</b> Article IX, Section 2, of the State Constitution and by the various state enabling statutes. In New York, the zoning enabling acts continue to require that zoning be undertaken "in accord with a well-considered plan"11 or "in accordance with a comprehensive plan."12 Unless the Town, city or village has adopted a comprehensive plan document using the more recently-enacted statutes (described later herein), local officials must refer to the extensive body of case law to determine how zoning can meet the more general "comprehensive plan" requirement.**May be impacted by State wetland regulations which protect wetlands greater than 12.4 acres and established buffer zones. Regulated at local level.</p> <p><b>*During the next update of the municipal zoning code, the Town will review the HMP and determine how they can incorporate the HMP into the zoning code. By doing so, it will help promote development and redevelopment patterns that are at less risk from known hazards.</b></p>					
Subdivision Regulations	No	-	Local	None	No
<p><b>Comment:</b> Subdivision is defined in the State enabling Statutes as: the division of any parcel of land into a number of lots, blocks, or sites as specified i a local ordinance, law or regulation, with or without streets or highways, for the purpose of sale, transfer of ownership, or development. There is not a requirement by NYS for subdivisions. Each municipality is permitted to further define subdivision for its own purposes in connection with its subdivision review procedure. The enabling statutes provide that a plat showing a division of land which is subject to a municipality's subdivision regulations, may not also be subject to review under its site plan review authority. (general city law s. 32 &amp; 33, Town Law s. 276 &amp; 277, Village Law s. 7-728 &amp; 7-730).</p> <p><b>*Subdivision Law is pending and in progress, still needing a public hearing and vote. When the Town updates the subdivision regulations, they will review the HMP and consider different ways to integrate the HMP into the regulation. By doing so, it helps the Town encourage new developers to design areas that avoids or minimizes hazards.</b></p>					
Stormwater Management Regulations	Yes	Title 6, Ch. X,17-7,8,70	Local	Local code officer/supervisor	Yes
<p><b>Comment:</b> Codes Rules and Regulations of the State of New York, Title 6. Department of Environmental Conservation, Chapter X. Division of Water Resources, Subchapter A. General Article 3. State Pollutant Discharge Elimination System, Part 750. State Pollutant Discharge Elimination System(SPDES) Permits. New York Environmental Conservation Law, Article 17, Titles 7, 8 and Article 70. New development and redevelopment projects that result in a land disturbance of one acre or greater, including projects less than one acre if they are part of a larger common plan of development or sale or if controlling such activities in a particular watershed is require a permit by the Department</p>					
Post-Disaster Recovery Plan or Regulation	No	-	Local	-	No
<b>Comment:</b>					
Real Estate Disclosure	Yes	Property Condition Disclosure Act, NY Code - Article 14 §460-467	State	NYS Department of State, Real Estate Agent	Yes



	Does your municipality have this? (Yes/No)	Code Citation and Date (code chapter, name, date, link)	Authority (local, county, state, federal)	Department / Agency Responsible	State Mandated
<p><b>Comment:</b> In addition to facing potential liability for failing to disclose under the exceptions to "caveat emptor," a home seller must make certain disclosures under the law or pay a credit of \$500 to the buyer at closing. While the PCDA requires a seller to complete a standardized disclosure statement and deliver it to the buyer before the buyer signs the final purchase contract, in practice, most home sellers in New York opt not to complete the statement and instead pay the credit.</p> <p><b>*The Town will review the HMP and identify areas of integration that they can incorporate into their real estate disclosure procedures. This can include developing disclosure requirements to have natural hazard related information and include all natural hazards that can impact the Town.</b></p>					
Growth Management Regulation	No	-	Local	Local Planning Board	No
<p><b>Comment:</b> In New York State, virtually all land use regulation, which is the primary tool for Smart Growth, takes place at the municipal level (i.e., in a city, village or town government). Land use planning is also primarily a municipal function. While State law provides for certain planning functions at the county or regional level, these mechanisms are largely advisory, whereas municipal planning is directly related to land use regulation.</p>					
Site Plan Review	Yes	General City Law s. 27-a, Town Law s. 247a, Village Law s. 7-725a	Local	Local Planning Board	No
<p><b>Comment:</b> The authority to require site plan review is derived from the State enabling Statutes (General City Law s. 27-a, Town Law s. 247a, Village Law s. 7-725a)The local legislative body has the power to delegate site plan review to the planning board, zoning board, etc.</p> <p><b>*Site Plan Review Law passed in the Town of Newfield in 2017. *When the Town updates the site plan review requirements, they will review the HMP and identify ways, if any, to integrate the HMP into the requirements.</b></p>					
Environmental Protection	Yes	Title 6 NYCRR Part 617	State	None	Yes
<p><b>Comment:</b> New State Environmental Quality Review Act (SEQR) Title 6 NYCRR Part 617 Regulations are in effect as of January 1st, 2019</p>					
Flood Damage Prevention Law	No	Federal :Participation in the NFIP State: Community Risk and Resiliency Act (CRRA)	Local, State, Federal	None	Yes - BFE+2 feet for all construction in the SFHA (residential and non-residential)
<p><b>Comment:</b> A community must adopt a Flood Damage Prevention Ordinance to participate in the National Flood Insurance Program.</p> <p><b>*The Town's law meets the minimum requirements set by NYS. In the event those requirements are revised, the Town will revise their law to include any revisions.</b></p>					
Municipal Separate Storm Sewer System (MS4) Regulation	Yes	EPA Phase II Stormwater Rule	Federal	None	Yes
<p><b>Comment:</b> This requires urbanized areas (local governments) to develop a stormwater management program that will reduce the amount of pollutants carried by stormwater during storm events to waterbodies to the "maximum extent practicable". The goal of the program is to improve water quality and recreational use of waterways. A Municipal Separate Storm Sewer Systems Permit, GP-0-15-003 is required.</p>					
Emergency Management	Yes	NYS Executive Law, Article 2B.	Local	Local OEM	Yes
<p><b>Comment:</b> The development of the New York State Comprehensive Emergency Management Plan (CEMP) is required under NYS Executive Law, Article 2B.</p>					
Climate Adaptation	No	NYS Executive Law, Article 75	Local	None	Yes
<p><b>Comment:</b> The environmental conservation law was amended by adding ARTICLE 75 - CLIMATE CHANGE under Assembly Bill A. 8429 and Senate Bill S. 6599, dated June 18, 2019.</p> <p>Climate Smart Community will soon be addressed by the Town board with plans of accepting a modified pledge.</p>					



	Does your municipality have this? (Yes/No)	Code Citation and Date (code chapter, name, date, link)	Authority (local, county, state, federal)	Department / Agency Responsible	State Mandated
Disaster Recovery Ordinance	No	-	Local	-	No
<b>Comment:</b>					
Disaster Reconstruction Ordinance	No	-	Local	-	No
<b>Comment:</b>					
Other Applicable Codes, Ordinances, & Requirements	No	-	-	-	-
<b>Comment:</b>					
<b>Planning Documents</b>					
Comprehensive Plan	Yes	General City Law section 28a(3)(a); Town Law section 272-a(2)(a); Village Law section 7-722(2)(a)	Local	Local planning and town boards	No
<p><b>Comment:</b> Optional under NYS Law, municipality may adopt a comprehensive plan or proceed through a planning process which has evolved based on case law. (Per State Legislature General City Law section 28a, Town Law s. 272a, Village Law s. 7-722) **May be impacted by State wetland regulations which protect wetlands greater than 12.4 acres and established buffer zones. Regulated at the local level</p> <p><b>*The Town of Newfield passed a Comprehensive Plan in 2013. *When the Town updates their comprehensive plan, they will review the HMP and identify any opportunities to integrate the HMP into the comprehensive plan. This will help promote consistency between the two plans and encourage multi-objective management and planning in the community.</b></p>					
Capital Improvement Plan	No	General Municipal Law Section 99-g.	Local	-	No
<b>Comment:</b> A local government can decide to adopt its capital plan pursuant to General Municipal Law Section 99-g.					
Disaster Debris Management Plan	No	-	Local	-	No
<p><b>Comment:</b> Based on past experience with disaster management, it is apparent that local municipalities that have an Emergency Debris Management Plan in place are able to manage their emergency response in a more comprehensive and coordinated manner and are able to address recovery and clean up faster and more efficiently than those without plans. With that in mind, the Department developed an Emergency Management Plan Tool Kit. The NYSDEC (Department) strongly urges all municipal officials to conduct pre-disaster planning and prepare emergency debris management plans. The Department recommends that these plans should be reviewed and updated annually.</p>					
Floodplain or Watershed Plan	No	-	Local	-	No
<b>Comment:</b> The State Pollutant Discharge Elimination System (SPDES) permit program is a primary way the DOW implements its watershed protection and restoration activities.					
Stormwater Plan	Yes	-	Local	Local code officer	No
<p><b>Comment:</b> Local Authority - Could be an element of the Comprehensive Plan. There is a required planning process that must be followed when addressing stormwater management in regulated new development and redevelopment projects.</p> <p><b>*The Town contracts with Tompkins county soil and water for inspections and recommendations.</b></p>					
Open Space Plan	No	NYS Constitution - Article 9; Statute of Local Governments. Section 10 (7)	Local	-	Yes
<b>Comment:</b> Planning boards prepare or oversee the preparation of local comprehensive plans, which should include an open space element. The primary purpose of a local open space plan is to cause the important open lands in the community to be conserved for open space uses.					



	Does your municipality have this? (Yes/No)	Code Citation and Date (code chapter, name, date, link)	Authority (local, county, state, federal)	Department / Agency Responsible	State Mandated
Urban Water Management Plan	No	-	Local	?	No
<b>Comment:</b>					
Habitat Conservation Plan	No	-	Local	?	No
<b>Comment:</b> Laws related to habit protection and biodiversity control the use and application of certain pesticides, demolition projects and clearing of vegetated areas. Identifying certain critical habitat areas could be included in the Comprehensive Plan. Critical Habitat is a part of certain State and Federal Permitting. The State had a Wildlife Action Plan requires to maintain eligibility for the State Wildlife Grant Program.					
Economic Development Plan	No				No
<b>Comment:</b> An Economic Development Plan may be prepared by a local government and be included or separate from the Comprehensive plan.**May be impacted by State wetland regulations which protect wetlands greater than 12.4 acres and established buffer zones.					
Shoreline Management Plan	No	Article 34, Environmental Conservation Law, Coastal Erosion Hazard Areas 6 NYCRR Part 505, Coastal Erosion Management Regulations	Local	-	Yes
<b>Comment:</b> Article 34, Environmental Conservation Law, Coastal Erosion Hazard Areas 6 NYCRR Part 505, Coastal Erosion Management Regulations					
Community Wildfire Protection Plan	No	-	Local	-	No
<b>Comment:</b> Under the federal Farm Bill, every 10 years each state must submit a State Forest Action Plan to the U.S. Forest Service. The Plan must be approved by the State Forester, who in New York is the director of DEC's Division of Lands and Forests. The next update of the Plan must be submitted to the Forest Service by June 2020.					
Forest Management Plan	No	-	Local	-	No
<b>Comment:</b>					
Transportation Plan	No	-	Local	-	No
<b>Comment:</b>					
Agriculture Plan	No	NYCRR Part 390 Agricultural and Farmland Protection -	Local	-	Yes
<b>Comment:</b> Municipalities may develop agricultural and farmland protection plans, in cooperation with cooperative extension and other organizations, including local farmers.					
Other (tourism, business dev, etc.)	-	-	-	-	-
Comment:					
<b>Response/Recovery Planning</b>					
Comprehensive Emergency Management Plan		NYS Executive Law, Article 2B	Local	Local OEM	Yes
<b>Comment:</b> The development of the New York State Comprehensive Emergency Management Plan (CEMP) is required under NYS Executive Law, Article 2B. The plan is developed and maintained by the New York State Office of Emergency Management and agencies that comprise the NYS Disaster Preparedness Commission (DPC).					





	Does your municipality have this? (Yes/No)	Code Citation and Date (code chapter, name, date, link)	Authority (local, county, state, federal)	Department / Agency Responsible	State Mandated
<b>The Town of Newfield is planning to update the Emergency mgmt. plan. When the Town updates their CEMP, they will review the HMP and identify any areas that can be integrated. This can include an analysis of the potential hazards to the Town and update goals and objectives to align with the HMP, as necessary.</b>					
Threat & Hazard Identification & Risk Assessment (THIRA)	No	-	Local	Local OEM	Yes
<b>Comment:</b> HIRA is an annual requirement that all states must complete to remain eligible to receive federal homeland security grant funding. It also involves a hazard and capability assessment but DHSES has several methodological concerns with the THIRA process and has developed CEPA to serve as the State's system to capture and analyze hazard/capability information. However, CEPA has been engineered to support the completion of the THIRA.					
Post-Disaster Recovery Plan	No	-	Local	-	No
<b>Comment:</b>					
Continuity of Operations Plan	No	-	Local	-	No
<b>Comment:</b> According to the FEMA, "State and local governments should consider developing or updating contingency plans for the continuity of operations (COOP) of vital government functions. Jurisdictions must be prepared to continue their minimum essential functions throughout the spectrum of possible threats from natural disasters through acts of terrorism. COOP planning facilitates the performance of State and local government and services during an emergency that may disrupt normal operations.					
Public Health Plan	No	-	Local	-	?
<b>Comment:</b>					
<b>Other:</b> Emergency Response Plan	No	-	Local		No
<b>Comment:</b> Nothing is mandated by law in NYS, however, article 2B of the Executive Law provides for authority to draft emergency plans by various levels of government in NYS.					
<b>Other:</b> Special Purpose Ordinances (such as critical or sensitive areas) No					
<b>Comment:</b>					

Table 9.15-4. Development and Permitting Capability

Indicate if your jurisdiction implements the following	Response Yes/No; Provide further detail
Development Permits. If yes, what department?	Yes, local planning board and code officer
Permits are tracked by hazard area. For example, floodplain development permits.	No
Buildable land inventory If yes, please describe If no, please quantitatively describe the level of buildout in the jurisdiction.	No, there are many open spaces/buildable land in Newfield, mostly farms that are no longer operational.





### 9.15.4.2 Administrative and Technical Capability

The table below summarizes potential staff and personnel resources available to the Town of Newfield.

*Table 9.15-5. Administrative and Technical Capabilities*

Resources	Available? (Yes or No)	Department/ Agency/Position
<b>Administrative Capability</b>		
Planning Board	Yes	Town Planning
Mitigation Planning Committee	No	-
Environmental Board/Commission	No	-
Open Space Board/Committee	No	-
Economic Development Commission/Committee	No	-
Warning Systems / Services (mass notification system, outdoor warning signals)	No	-
Maintenance programs to reduce risk	No	-
Mutual aid agreements	Yes	Local highway department and volunteer fire department
<b>Technical/Staffing Capability</b>		
Planners or engineers with knowledge of land development and land management practices	No	-
Engineers or professionals trained in building or infrastructure construction practices	No	-
Planners or engineers with an understanding of natural hazards	No	-
Staff with expertise or training in benefit/cost analysis	No	-
Professionals trained in conducting damage assessments	No	-
Personnel skilled or trained in GIS and/or Hazards United States (HAZUS) – Multi-Hazards (MH) applications	No	-
Scientist familiar with natural hazards	No	-
NFIP Floodplain Administrator (FPA)	No	-
Surveyor(s)	No	-
Emergency Manager	No	-
Grant writer(s)	No	-
Resilience Officer	No	-
Other	No	-

### 9.15.4.3 Fiscal Capability

The table below summarizes financial resources available to the Town of Newfield.



*Table 9.15-6. Fiscal Capabilities*

Financial Resources	Accessible or Eligible to Use (Yes/No)
Community development Block Grants (CDBG, CDBG-DR)	Yes
Capital improvements project funding	Yes
Authority to levy taxes for specific purposes	Yes
User fees for water, sewer, gas or electric service	Yes
Impact fees for homebuyers or developers of new development/homes	No
Stormwater utility fee	No
Incur debt through general obligation bonds	Yes
Incur debt through special tax bonds	Yes
Incur debt through private activity bonds	No
Withhold public expenditures in hazard-prone areas	No
Other federal or state Funding Programs	Yes
Open Space Acquisition funding programs	No
Other	No

#### 9.15.4.4 Education and Outreach Capability

The table below summarizes the education and outreach resources available to the Town of Newfield.

*Table 9.15-7. Education and Outreach Capabilities*

Indicate if your jurisdiction has the following resources	Yes/No; Please describe
Public information officer or communications office?	No
Personnel skilled or trained in website development?	Yes
Hazard mitigation information available on your website; if yes, describe	No
Social media for hazard mitigation education and outreach; if yes, briefly describe.	Yes, The Town has social media (Facebook and website) but does not use related to hazard mitigation.
Citizen boards or commissions that address issues related to hazard mitigation; if yes, briefly describe.	No
Other programs already in place that could be used to communicate hazard-related information; if yes, briefly describe.	No
Warning systems for hazard events; if yes, briefly describe.	Yes, 411 and SWIFT 911 from Tompkins County
Natural disaster/safety programs in place for schools; if yes, briefly describe.	Yes, Newfield Central School has its own plans
Other	-

#### 9.15.4.5 Community Classifications

The table below summarizes classifications for community programs available to the Town of Newfield.



Table 9.15-8. Community Classifications

Program	Participating? (Yes/No)	Classification (if applicable)	Date Classified (if applicable)
Community Rating System (CRS)	No	-	-
Building Code Effectiveness Grading Schedule (BCEGS)	No	-	-
Public Protection (ISO Fire Protection Classes 1 to 10)	Yes	Local Volunteer Fire Department participates	
NYSDEC Climate Smart Community	Yes	-	2021
Storm Ready Certification	No	-	-
Firewise Communities classification	No	-	-
Other	No	-	-

Note:

- N/A Not applicable
- NP Not participating
- Unavailable

### 9.15.4.6 Adaptive Capacity

Adaptive capacity is defined as “the ability of systems, institutions, humans and other organisms to adjust to potential damage, to take advantage of opportunities, or respond to consequences” (IPCC 2014). In other words, it describes a jurisdiction’s current ability to adjust to, protect from, or withstand a hazard event. This term is often discussed in reference to climate change; however, adaptive capacity also includes an understanding of local capacity for adapting to current and future risks and changing conditions. The table below summarizes the adaptive capacity for each hazard and the jurisdiction’s rating.

- Does the Town of Newfield have access to resources to determine the possible impacts of climate change upon the Town of Newfield? No, however the Town is interested in increasing resources to address climate change related issues.
- Is the administrative supportive of integrating climate change in policies or actions? Yes, the Town does support integrating climate change into their plans and policies, given that they have positive impacts on the local economy and increase the overall wellbeing and quality of life for Newfield residents.
- Is climate change already being integrated into current policies/plans or actions (projects/monitoring) within the Town of Newfield? Yes, climate change is discussed in multiple municipal policies/documents.

Table 9.15-9. Adaptive Capacity

Hazard	Adaptive Capacity (Capabilities) - High/Medium/Low*
Disease Outbreak	High
Drought	High
Extreme Temperature	Medium



Hazard	Adaptive Capacity (Capabilities) - High/Medium/Low*
Flood	Medium
Harmful Algal Bloom	Medium
Invasive Species	Medium
Ground Failure	Medium
Severe Storm	Medium
Severe Winter Storm	High
Wildfire	Medium

\*High Capacity exists and is in use

Medium Capacity may exist; but is not used or could use some improvement

Low Capacity does not exist or could use substantial improvement

Unsure Not enough information is known to assign a rating

### 9.15.4.7 National Flood Insurance Program

This section provides specific information on the management and regulation of the regulatory floodplain.

#### NFIP Floodplain Administrator (FPA)

Alan Teeter, Code Officer  
166 Main St., Newfield, NY 14867  
607-327-1849  
[codeofficer@newfieldny.org](mailto:codeofficer@newfieldny.org)

Table 9.15-10. Floodplain Administrator Questionnaire

NFIP Topic	Comments
<b>Flood Vulnerability Summary</b>	
Describe areas prone to flooding in your jurisdiction. Do you maintain a list of properties that have been damaged by flooding?	The Town does not maintain a list of properties that have been damaged by flooding.
Do you maintain a list of property owners interested in flood mitigation? How many homeowners and/or business owners are interested in mitigation (elevation or acquisition)?	No
Are any RiskMAP projects currently underway in your jurisdiction? If so, state what projects are underway.	No
How do you make Substantial Damage determinations? How many were declared for recent flood events in your jurisdiction?	The Town does not make determinations of substantial damage to private properties
How many properties have been mitigated (elevation or acquisition) in your jurisdiction? If there are mitigation properties, how were the projects funded?	None
Do your flood hazard maps adequately address the flood risk within your jurisdiction?	Yes



NFIP Topic	Comments
If not, state why.	
<b>Resources</b>	
What local department is responsible for floodplain management?	No department
Are any certified floodplain managers on staff in your jurisdiction?	No
Do you have access to resources to determine possible future flooding conditions from climate change?	No
Does your floodplain management staff need any assistance or training to support its floodplain management program? If so, what type of assistance/training is needed?	Potential interest in increased training.
Provide an explanation of NFIP administration services you provide (e.g. permit review, GIS, education/outreach, inspections, engineering capability)	Services provided through county
How do you determine if proposed development on an existing structure would qualify as a substantial improvement?	Site Plan Review
What are the barriers to running an effective NFIP program in the community, if any?	Inadequate knowledge about program
<b>Compliance History</b>	
Does your jurisdiction have any outstanding NFIP compliance violations that need to be addressed? If so, state the violations.	No
When was the most recent Community Assistance Visit (CAV) or Community Assistance Contact (CAC)?	3/17/1997
<b>Regulatory</b>	
What is the local law number or municipal code of your flood damage prevention ordinance? What is the date that your flood damage prevention ordinance was last amended?	Local Law #1, section 13 (1985)
Does your floodplain management program meet or exceed minimum requirements? If exceeds, in what ways?	Yes
Are there other local ordinances, plans or programs (e.g. site plan review) that support floodplain management and meeting the NFIP requirements? For instance, does the planning board or zoning board consider efforts to reduce flood risk when reviewing variances such as height restrictions?	Yes
<b>Community Rating System (CRS)</b>	
Does your jurisdiction participate in CRS? If yes, is your jurisdiction interested in improving its CRS Classification? If no, is your jurisdiction interested in joining the CRS program?	No but interested in participating.



### 9.15.4.8 National Flood Insurance Program (NFIP) Summary

The following table summarizes the NFIP statistics for the Town of Newfield.

Table 9.15-11. NFIP Summary

Municipality	# Policies	# Claims (Losses)	Total Loss Payments	# RL Properties	# SRL Properties
Town of Newfield	9	6	\$52,254.13	1	-

Source: FEMA 2020

Notes: Policies, claims, repetitive loss, and severe repetitive loss statistics provided by FEMA Region 2, and current as of July 7, 2020. The total number of repetitive loss properties does not include severe repetitive loss properties. SRL property information was not included in the available data set.

RL Repetitive Loss; SRL Severe Repetitive Loss

### 9.15.4.9 Additional Areas of Existing Integration

**Regional Senior Service** - The use of Personal Emergency Response Systems (PERS) Alarms that are monitored on a 24/7 basis is often lifesaving and their cost is minimal. There is a PERS program through the Tompkins County Office of the Aging and several private alarm companies offer similar services.

**Police** - As of January 2013, there is a police sub stations in Newfield, made up of the Tompkins County Sheriff’s Department and the New York State Police

**Fire** - The Newfield Fire Company is an all-volunteer company that depends on members of the community to provide fire protection and Emergency Medical Services (EMS) to the residents of the Town of Newfield, and surrounding Tompkins County.1 It was formed on March 17, 1917, and in 1982, the company moved to its current site at 77 Main Street.

**Emergency Management** - Tompkins County is part of the State Emergency Management System. Every member of the Newfield Fire Department, Newfield Town Board, Town Clerk’s Office, and Town staff should be required to attend National and State training in Emergency Management.

### 9.15.4.10 Evacuation, Sheltering, Temporary Housing, and Permanent Housing

Evacuation routes, sheltering measures, temporary housing, and permanent housing must all be in place and available for public awareness to protect residents, mitigate risk, and relocate residents, if necessary, to maintain post-disaster social and economic stability.

#### Evacuation Route

The Town of Newfield does not have any officially designated evacuation routes but consider NYS 13N, NYS 13S, Shaffer Rd or NYS 34/96 EW to be the main roads used for evacuation during a hazard event. However, these roads have not officially been recognized as evacuation routes and are not in any official document.



Evacuation routes are specific to hazard event and routes will vary according to the location of the event. The Town will identify evacuation routes according to procedures outlined in the ESF16 annex of the Tompkins County 2021 CEMP,

## Sheltering

The Newfield Central School is considered the main shelter for the Town of Newfield as it is one of the only facilities with backup power.

*Table 9.15-12. Shelter Locations in the Municipality*

Shelter Name	Address	Capacity	Accommodates Pets?	ADA Compliant?	Backup Power?	Types of Medical Services Provided	Other Services Provided
Newfield Central School	247 Main St	Unsure	No	Yes	Yes	No	-

## Temporary Housing

This section provides information on temporary housing locations.

*Table 9.15-13. Temporary Housing Locations in the Municipality*

Site Name	Site Address	Infrastructure / Utilities Available (water, electric, septic, etc.)	Capacity (number of sites)	Type	Actions Required to Ensure Conformance with the NYS Uniform Fire Prevention and Building Code
Newfield Town Athletic Park	VanKirk Rd	Water, Electric	Unsure	Open fields	No buildings present

## Permanent Housing

While the Town did not identify potential locations for permanent housing, as part of the planning process, a countywide buildable land analysis was conducted and presented in Section 4 (County Profile). The Town can utilize this analysis to identify potential locations.

*Table 9.15-14. Permanent Housing Locations in the Municipality*

Site Name	Site Address	Infrastructure / Utilities Available (water, electric, septic, etc.)	Capacity (number of sites)	Type	Actions Required to Ensure Conformance with the NYS Uniform Fire
-----------	--------------	--	----------------------------	------	--





					Prevention and Building Code
Please refer to Section 4 (County Profile).					

## 9.15.5 Hazard Event History Specific to the Town of Newfield

Tompkins County has a history of natural hazard events as detailed in Volume I, Section 5 (Risk Assessment) of this plan. A summary of historical events is provided in each of the hazard profiles and includes a chronology of events that have affected the County and its municipalities. The Town of Newfield’s history of federally declared (as presented by FEMA) and significant hazard events (as presented in NOAA-NCEI) is consistent with that of Tompkins County. Table 9.15-15 provides details regarding municipal-specific loss and damages the Town experienced during hazard events. Information provided in the table below is based on reference material or local sources. For details of these and additional events, refer to Volume I, Section 5.0 of this plan.

*Table 9.15-15. Hazard Event History*

Dates of Event	Event Type (Disaster Declaration if applicable)	County Designated?	Summary of Event	Municipal Summary of Damages and Losses
August 3, 2014	Heavy Rain and Flash Flooding		Showers and thunderstorms in the area produced torrential downpours. In the County, several roadways were inundated causing approximately \$100,000 in property damage.	The Town was impacted but did not report any damages.
June 14-15, 2015	Heavy Rain and Flash Flood		A tropical-like airmass was in place allowing for a stripe of 2-4 inches of very heavy rain to fall in a narrow band extending from near Watkins Glen to areas north of Binghamton. Severe flash flooding was encountered with numerous roads and culverts destroyed by raging water. In some areas, homes, schools and other businesses were flooded. In Tompkins County, flooding caused the washout of numerous bridges in the area. The County had	The Town was impacted. Damage to culvert pipes, several ditches, roads, and bridges including a historical stone bridge. Also, personal property damage.



Dates of Event	Event Type (Disaster Declaration if applicable)	County Designated?	Summary of Event	Municipal Summary of Damages and Losses
			approximately \$1.5 million in damages from this event.	
February 14-15, 2016	Winter Storm Flooding		Winter storm related flooding	-
March 14-15, 2017	Severe Winter Storm and Snowstorm (DR-4322)	Yes	Snowfall ranged between 12 and 24 inches in Tompkins County with the highest amounts in the far southeast part of the county.	The Town highway personal worked many overtime hours. The Town had no claims.
July 24, 2017	Heavy Rain and Flash Flooding		Widespread thunderstorms produced three to inches of rain. This led to streams and creeks overflowing their banks and flash flooding in many areas. The County had approximately \$75,000 in property damage.	None identified.
October 31- November 1, 2019	Severe Storms, Straight-Line Winds and Flooding (DR-4472)	Yes		No claims by the Town

Notes:

- EM Emergency Declaration (FEMA)
- FEMA Federal Emergency Management Agency
- DR Major Disaster Declaration (FEMA)
- N/A Not applicable

## 9.15.6 Hazard Ranking and Jurisdiction-Specific Vulnerabilities

The hazard profiles in Section 5.0 (Risk Assessment) of this plan have detailed information regarding each plan participant’s vulnerability to the identified hazards. The following summarizes the Town of Newfield’s risk assessment results and data used to determine the hazard ranking.

### 9.15.6.1 Critical Facilities

New York Department of Environmental Conservation (DEC) Statute 6 CRR-NY 502.4 sets forth floodplain management criteria for State projects located in flood hazard areas. The law states that no such projects related to critical facilities shall be undertaken in a Special Flood Hazard Area (SFHA) unless constructed according to specific mitigation specifications, including being raised 2’ above the Base Flood Elevation (BFE).



This statute is outlined at <http://tinyurl.com/6-CRR-NY-502-4>. While all vulnerabilities should be assessed and documented, the State places a high priority on exposure to flooding. Critical facilities located in an SFHA, or having ever sustained previous flooding, must be protected to the 0.2 percent or 500-year flood event, or worst damage scenario. For those that do not meet this criteria, the jurisdiction must identify an action to achieve this level of protection (NYS DHSES 2017).

The Town of Newfield does not have any critical facilities located in a 1% or 0.2% chance flood zone, according to FEMA HAZUS, which estimates the damage and loss due to municipality’s identified hazards of concern.

Name	Type	Exposure		Addressed by Proposed Action
		1% Event	0.2% Event	
No facilities identified				

### 9.15.6.2 Hazard Ranking

This section provides the community specific identification of the primary hazard concerns based on identified problems, impacts and the results of the risk assessment as presented in Section 5 (Risk Assessment) of the plan. The ranking process involves an assessment of the likelihood of occurrence for each hazard, along with its potential impacts on people, property, and the economy as well as community capability and changing future climate conditions. This input supports the mitigation action development to target those hazards with highest level of concern.

As discussed in Section 5.3 (Hazard Ranking), each participating jurisdiction may have differing degrees of risk exposure and vulnerability compared to Tompkins as a whole. Therefore, each Town of Newfield ranked the degree of risk to each hazard as it pertains to their community. The table below summarizes the hazard risk/vulnerability rankings of potential natural hazards for the Town of Newfield. The Town of Newfield has reviewed the Town hazard risk/vulnerability risk ranking table as well as its individual results to reflect the relative risk of the hazards of concern to the community. During the review of the hazard/vulnerability risk ranking, the Town of Newfield concurred with the calculate rankings.

*Table 9.15-16. Hazard Ranking Input*

Hazard	Ranking
Disease Outbreak	Medium
Drought	Medium
Extreme Temperature	Medium
Flood	High
Harmful Algal Bloom	Low
Invasive Species	Medium
Ground Failure	Medium
Severe Storm	High
Severe Winter Storm	Medium



Hazard	Ranking
Wildfire	Medium

Note: The scale is based on the following hazard rankings as established in Section 5.3.

### 9.15.6.3 Identified Issues

The Town of Newfield has identified the following vulnerabilities within their community:

- Flooding and severe storms (thunderstorms) are a significant issue for the Town.
- There is a significant concern for individuals who live in the rural parts of the Town as many roads are narrow and poorly paved, making it difficult for emergency medical services to access the residents in times of need.

Specific areas of concern based on resident response to the Town of Newfield Hazard Mitigation Citizen survey include:

- Road flooding is a significant concern for the Town of Newfield.
- Road maintenance is inadequate thus leading to drainage issues.

## 9.15.7 Mitigation Strategy and Prioritization

This section discusses past mitigations actions and status, describes proposed hazard mitigation initiatives, and their prioritization.

### 9.15.7.1 Past Mitigation Initiative Status

The following table indicates progress on the community’s mitigation strategy identified in the 2014 Plan. Actions that are carried forward as part of this plan update are included in the following subsection in its own table with prioritization. Previous actions that are now on-going programs and capabilities are indicated as such in the following table and may also be found under ‘Capability Assessment’ presented previously in this annex.



Table 9.15-17. Status of Previous Mitigation Actions

Project #	Project Name	Hazard(s) Addressed	Responsible Party	Brief Summary of the Original Problem and the Solution (Project)	Status (In Progress, Ongoing, No Progress, Complete)	Evaluation of Success (if complete)		Next Steps 1. Project to be included in 2021 HMP or Discontinue 2. If including action in the 2021 HMP, revise/reword to be more specific (as appropriate). 3. If discontinue, explain why.
N1		Flash Flood	Town of Newfield Highway	Develop long term mitigation plans for Main Street Culvert	IN PROCESS ONGOING	Cost	\$880,000	Summer of 2020, the Main Street Culvert Pipe will be upgraded with an insert, headwalls improved and road resurfaced. Estimated cost to be \$880,000
						Level of Protection		
						Damages Avoided; Evidence of Success		
N2		Flash Flood 6/2015	Town of Newfield Highway	Retrofit culvert on Douglas Road for added resilience	COMPLETE 2016	Cost	\$171,000	Complete
						Level of Protection	High	
						Damages Avoided; Evidence of Success	Flood	
NEW		Flash Flood 6/2015	Town of Newfield Highway	Retrofit culvert on Bower Road for added resilience	COMPLETE 2015	Cost	\$66,000	Complete
						Level of Protection	High	
						Damages Avoided; Evidence of Success	Flood	
NEW		Flash Flood 6/2015	Town of Newfield Highway	Retrofit culvert on Connecticut Hill Road and repairs from flood damages	COMPLETE 2016	Cost	\$60,000	Complete
						Level of Protection	High	
						Damages Avoided; Evidence of Success	Flood	
NEW		Flash Flood 6/2015	Town of Newfield Highway	Repairs to Carter Creek, repairs to head wall and stream rebuilding	COMPLETE 2017	Cost	\$84,500	Complete
						Level of Protection	High	
						Damages Avoided;	Flood	



Project #	Project Name	Hazard(s) Addressed	Responsible Party	Brief Summary of the Original Problem and the Solution (Project)	Status (In Progress, Ongoing, No Progress, Complete)	Evaluation of Success (if complete)		Next Steps 1. Project to be included in 2021 HMP or Discontinue 2. If including action in the 2021 HMP, revise/reword to be more specific (as appropriate). 3. If discontinue, explain why.
						Evidence of Success		
NEW		Flash Flood 6/2015	Town of Newfield	Repairs to historical stone bridge	COMPLETE 2018	Evidence of Success		Complete
						Cost	\$188,000	
						Level of Protection	High	
						Damages Avoided; Evidence of Success	Flood	
NEW		Erosion	Town of Newfield Highway	Upgrade to Fishkill Rd Culvert, new headwalls	COMPLETE 2018	Cost	\$130,000	Complete
						Level of Protection	High	
						Damages Avoided; Evidence of Success	Flood	
						Cost	\$95,000	
NEW		Erosion	Town of Newfield Highway	Upgrade to Jackson Hollow Road culvert.	COMPLETE 2019	Level of Protection	High	Complete
						Damages Avoided; Evidence of Success	Flood	



### 9.15.7.2 Completed Mitigation Initiatives Not Identified in the Previous Mitigation Strategy

The Town of Newfield has identified the following mitigation projects/activities that have also been completed but were not identified in the previous mitigation strategy in the 2014 Plan:

- All actions identified above.

### 9.15.7.3 Proposed Hazard Mitigation Initiatives for the Plan Update

The Town of Newfield participated in a mitigation action workshop in 2020 and was provided the following FEMA publications to use as a resource as part of their comprehensive review of all possible activities and mitigation measures to address their hazards: FEMA 551 'Selecting Appropriate Mitigation Measures for Floodprone Structures' (March 2007) and FEMA 'Mitigation Ideas – A Resource for Reducing Risk to Natural Hazards' (January 2013).

Table 9.15-18 summarizes the comprehensive range of specific mitigation initiatives the Town of Newfield would like to pursue in the future to reduce the effects of hazards. Some of these initiatives may be previous actions carried forward for this plan update. These initiatives are dependent upon available funding (grants and local match availability) and may be modified or omitted at any time based on the occurrence of new hazard events and changes in municipal priorities. Both the four FEMA mitigation action categories and the six CRS mitigation action categories are listed in the table below to further demonstrate the wide range of activities and mitigation measures selected.

As discussed in Section 6, 14 evaluation/prioritization criteria are used to complete the prioritization of mitigation initiatives. For each new mitigation action, a numeric rank is assigned (-1, 0, or 1) for each of the 14 evaluation criteria to assist with prioritizing your actions as 'High', 'Medium', or 'Low.' The table below summarizes the evaluation of each mitigation initiative, listed by Action Number.

Table 9.15-19 provides a summary of the prioritization of all proposed mitigation initiatives for the Plan update.





Table 9.15-18. Proposed Hazard Mitigation Initiatives

Project Number	Project Name	Goals Met	Hazard(s) to be Mitigated	Description of Problem and Solution	Critical Facility (Yes/No)	EHP Issues	Estimated Timeline	Lead Agency	Estimated Costs	Estimated Benefits	Potential Funding Sources	Priority	Mitigation Category	CRS Category
2021-T NEWFIELD-001	Develop Resilient Communications System	1,5	All Hazards	<p><b>Problem:</b> Lack of adequate broadband throughout the Town (particularly beyond hamlet) limiting residents' availability to medical care, communications, education and remote workforce.</p> <p><b>Solution:</b> Work with Spectrum and other entities to install high speed broadband (100 mbps or better) throughout the Town. Initial inventory of housing units without broadband will need to be conducted, before the planning process can begin. Once the inventory is finalized, the town would need to work with the County, and Spectrum to develop a plan to increase capacity in the region.</p>	No	No	Medium	Town Board/ Spectrum	Medium	High	The New NY Broadband Program, Municipal Budget, Climate Smart Communities	High	SIP	SP
2021-T NEWFIELD-002	West Branch Caygua Inlet and Pony Hollow Creek Mitigations	1,3	Flood	<p><b>Problem:</b> Overflowing Inlet during heavy rain, structures flooded causing personal property damage to multiple properties.</p> <p><b>Solution:</b> Conduct stream assessment to determine best first steps to reduce flooding and erosion. Proposed steps include widening of stream at bridge</p>	No	No	Long	Town Board / SWCD	High	High	FMA, HMGP, NRCS Emergency Watershed Protection (EWP) program	High	SIP	SP



Table 9.15-18. Proposed Hazard Mitigation Initiatives

Project Number	Project Name	Goals Met	Hazard(s) to be Mitigated	Description of Problem and Solution	Critical Facility (Yes/No)	EHP Issues	Estimated Timeline	Lead Agency	Estimated Costs	Estimated Benefits	Potential Funding Sources	Priority	Mitigation Category	CRS Category
				<p>junctures, developing solid riparian buffers, along the stream, and creating flood control structures that can help redirect the flow of water. Flood mitigation options for structures in floodplains and stream corridor areas should also be explored including retrofits and potentially buyouts.</p>										
2021-T NEWFIELD-003	Shelter Valley Residents	1,4	Flood	<p><b>Problem:</b> Overflowing creek, history of flooding during heavy rain, basements and first floor filling up causing personal property damage. During the June 2015 heavy flows from Benjamin Hill carving out landslides along Depot Road carrying debris downstream to Shelter Valley resulting in first floor flooding throughout the Shelter Valley neighborhood.</p> <p><b>Solution:</b> Streambank stabilization of the West Branch of the Cayuga Lake Inlet will be needed. Work with the Soil and Water Conservation District to develop engineering plan to stabilize banks and mitigate overflow of creek/ flooding of properties. In addition,</p>	No	No	Long	Town Board and EMS	High	High	FMA, HMA, BRIC CDGB	High	SIP	SP



Table 9.15-18. Proposed Hazard Mitigation Initiatives

Project Number	Project Name	Goals Met	Hazard(s) to be Mitigated	Description of Problem and Solution	Critical Facility (Yes/No)	EHP Issues	Estimated Timeline	Lead Agency	Estimated Costs	Estimated Benefits	Potential Funding Sources	Priority	Mitigation Category	CRS Category
				conduct outreach to neighborhood residents and provide potential mitigation and retrofitting solutions to mitigate future flood damage.										
2021-T NEWFIELD-004	VanBuskirk Gulf Residents Flood Mitigation Initiative	1,3	Flood/ Severe Storms	<p><b>Problem:</b> Overflowing creek, history of flooding during heavy rain, basements filling up causing personal property damage during the June 2015 flood. Culvert needed to be replaced on Stone Jug Road. Flow of the creeks course was altered by 4" per hour rains carrying debris downstream where it jammed up the culvert effectively washing out the culvert.</p> <p><b>Solution:</b> Replace culvert and conduct rightsizing to mitigate future washout. In addition, Work with the town DPW and the SWCD to conduct additional assessment on additional structural reinforcement measures and flood control barriers to reduce washout in the future and prevent overflow. The culvert installation would be phase 1 of the entire project.</p>	No	No	Medium	Town DPW and SWCD	Low	High	Municipal Budget	High	EAP	PR



Table 9.15-18. Proposed Hazard Mitigation Initiatives

Project Number	Project Name	Goals Met	Hazard(s) to be Mitigated	Description of Problem and Solution	Critical Facility (Yes/No)	EHP Issues	Estimated Timeline	Lead Agency	Estimated Costs	Estimated Benefits	Potential Funding Sources	Priority	Mitigation Category	CRS Category
2021-T NEWFIELD-005	Sewer Study	1,5	Flood/ Severe Storms	<p><b>Problem:</b> Increased wastewater inflow during heavy rains causes backup and overflow of existing treatment facilities. With projected precipitation, this is likely to worsen so a solution will need to be developed.</p> <p><b>Solution:</b> Conduct a study of water inflow and out flow, leak testing and increase of the leech reduce backup and overflow. This will require a hiring of an engineering firm as well as the collaboration with the Town public works. The second phase would be to implement to solutions developed by the firm. This will be a preliminary study from which technical proposals will be developed. Affiliated municipal officials that rely on this system would need to be stakeholders for this project.</p>	Yes	No	Medium	Town DPW	High	High	FMA, NYSDEC Environmental Protection & Improvement Grants and Clean Water Act Section 604(b) Water Quality Planning Grants	High	SIP	SP

Notes:

Not all acronyms and abbreviations defined below are included in the table.

Acronyms and Abbreviations:

Potential FEMA HMA Funding Sources:

Timeline:



CAV Community Assistance Visit  
 CRS Community Rating System  
 DPW Department of Public Works  
 EHP Environmental Planning and Historic Preservation  
 FEMA Federal Emergency Management Agency  
 FPA Floodplain Administrator  
 HMA Hazard Mitigation Assistance  
 N/A Not applicable  
 NFIP National Flood Insurance Program  
 OEM Office of Emergency Management

FMA Flood Mitigation Assistance Grant Program  
 HMGP Hazard Mitigation Grant Program  
 PDM Pre-Disaster Mitigation Grant Program  
 BRIC Building Resilient Infrastructure and Communities

The time required for completion of the project upon implementation


Cost:

The estimated cost for implementation.

Benefits:

A description of the estimated benefits, either quantitative and/or qualitative.

Critical Facility:

Yes  Critical Facility located in 1% floodplain

Mitigation Category:

- Local Plans and Regulations (LPR) – These actions include government authorities, policies or codes that influence the way land and buildings are being developed and built.
- Structure and Infrastructure Project (SIP) - These actions involve modifying existing structures and infrastructure to protect them from a hazard or remove them from a hazard area. This could apply to public or private structures as well as critical facilities and infrastructure. This type of action also involves projects to construct manmade structures to reduce the impact of hazards.
- Natural Systems Protection (NSP) – These are actions that minimize damage and losses, and also preserve or restore the functions of natural systems.
- Education and Awareness Programs (EAP) – These are actions to inform and educate citizens, elected officials, and property owners about hazards and potential ways to mitigate them. These actions may also include participation in national programs, such as StormReady and Firewise Communities

CRS Category:

- Preventative Measures (PR) - Government, administrative or regulatory actions, or processes that influence the way land and buildings are developed and built. Examples include planning and zoning, floodplain local laws, capital improvement programs, open space preservation, and storm water management regulations.
- Property Protection (PP) - These actions include public activities to reduce hazard losses or actions that involve (1) modification of existing buildings or structures to protect them from a hazard or (2) removal of the structures from the hazard area. Examples include acquisition, elevation, relocation, structural retrofits, storm shutters, and shatter-resistant glass.
- Public Information (PI) - Actions to inform and educate citizens, elected officials, and property owners about hazards and potential ways to mitigate them. Such actions include outreach projects, real estate disclosure, hazard information centers, and educational programs for school-age children and adults.
- Natural Resource Protection (NR) - Actions that minimize hazard loss and also preserve or restore the functions of natural systems. These actions include sediment and erosion control, stream corridor restoration, watershed management, forest and vegetation management, and wetland restoration and preservation.
- Structural Flood Control Projects (SP) - Actions that involve the construction of structures to reduce the impact of a hazard. Such structures include dams, setback levees, floodwalls, retaining walls, and safe rooms.
- Emergency Services (ES) - Actions that protect people and property during and immediately following a disaster or hazard event. Services include warning systems, emergency response services, and the protection of essential facilities





Table 9.15-19. Summary of Prioritization of Actions

Project Number	Project Name	Life Safety	Property Protection	Cost-Effectiveness	Technical	Political	Legal	Fiscal	Environmental	Social	Administrative	Multi-Hazard	Timeline	Agency Champion	Other Community	Total	High / Medium / Low
2021-T NEWFIELD-001	Develop Resilient Communications System	1	1	1	1	0	0	-1	1	1	1	1	1	1	1	10	High
2021-T NEWFIELD-002	W. Branch Cayuga Inlet Clearing and Pony Hollow Creek Mitigations	1	1	1	1	1	1	0	1	1	1	1	1	1	1	13	High
2021-T NEWFIELD-003	Shelter Valley Residents	1	1	1	1	1	1	-1	1	1	1	1	1	1	1	12	High
2021-T NEWFIELD-004	VanBuskirk Gulf Residents Flood Mitigation Initiative	1	1	1	1	1	1	-1	1	1	1	1	1	1	1	12	High
2021-T NEWFIELD-005	Sewer Study	1	1	1	0	1	1	-1	1	1	1	1	1	1	1	11	High

Note: Refer to Section 6, which conveys guidance on prioritizing mitigation actions. Low (0-4), Medium (5-8), High (9-14).





## 9.15.8 Proposed Mitigation Action Types

The table below indicates the range of proposed mitigation action categories.

*Table 9.15-20. Analysis of Mitigation Actions by Hazard and Category*

Hazard	FEMA				CRS					
	LPR	SIP	NSP	EAP	PR	PP	PI	NR	SP	ES
Disease Outbreak		001							001	
Drought		001							001	
Extreme Temperature		001							001	
Flood		001; 002; 003; 005		004	004				001; 002; 003; 005	
Harmful Algal Bloom		001							001	
Invasive Species		001							001	
Ground Failure		001							001	
Severe Storm		001; 005		004	004				001; 005	
Severe Winter Storm		001							001	
Wildfire		001							001	

Note: Section 6 (Mitigation Strategy) provides for an explanation of the mitigation categories.

## 9.15.9 Staff and Local Stakeholder Involvement in Annex Development

The Town of Newfield followed the planning process described in Section 3 (Planning Process) in Volume I of this plan update. This annex was developed over the course of several months with input from many Town departments, including: Town Council, Town Supervisor, Town DPW, and Code Enforcement. The Supervisor and Clerk represented the community on the Town of Newfield Hazard Mitigation Plan Planning Partnership, Steering Committee, and supported the local planning process requirements by securing input from persons with specific knowledge to enhance the plan. All departments were asked to contribute to the annex development through reviewing and contributing to the capability assessment, reporting on the status of previously identified actions, and participating in action identification and prioritization.



Additional documentation on the Town of Newfield’s planning process through Planning Partnership meetings is included in Section 3 (Planning Process) and Appendix C (Meetings).

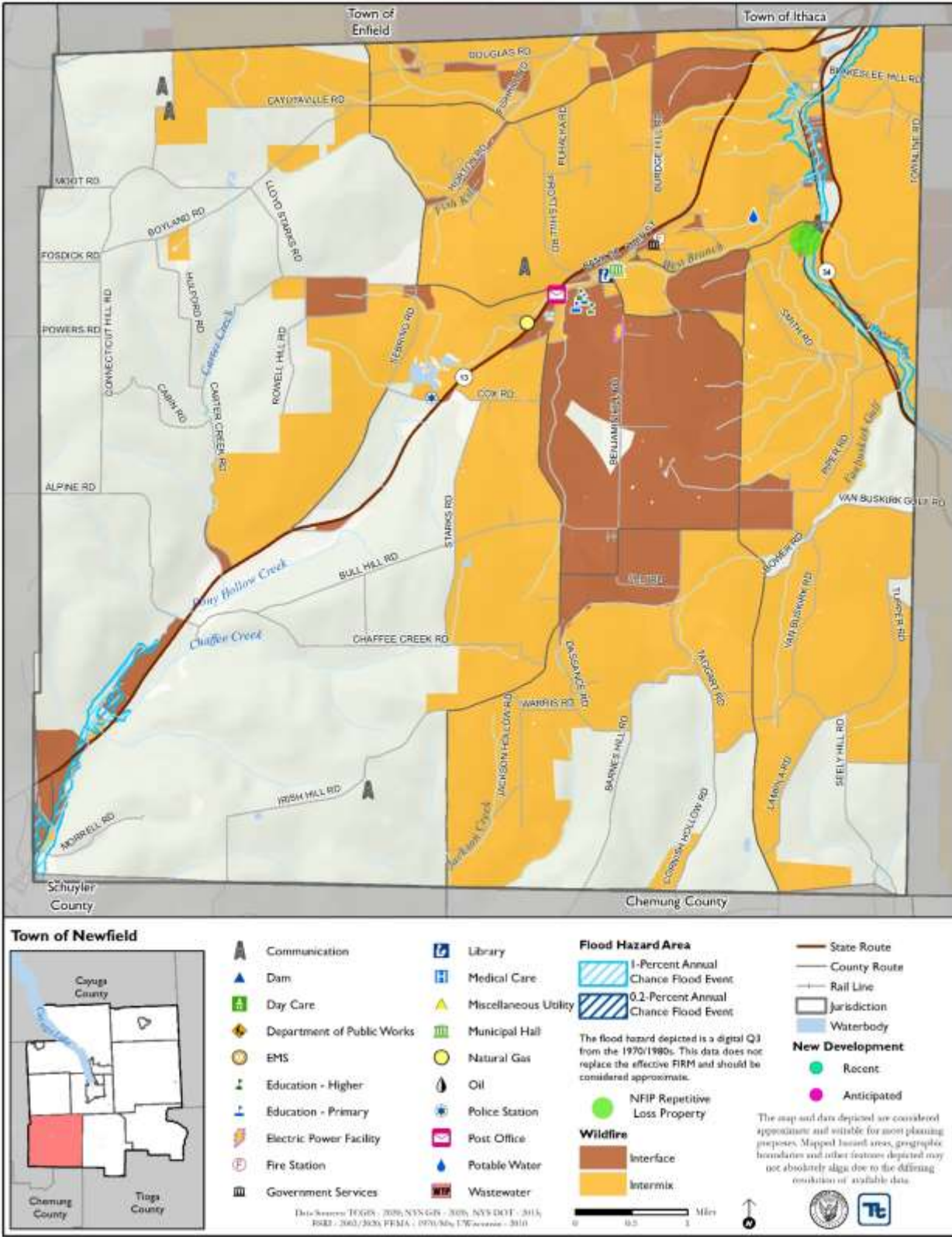
## 9.15.10 Hazard Area Extent and Location

---

A hazard area extent and location map has been generated for the Town of Newfield that illustrates the probable areas impacted within the Town of Newfield. This map is based on the best available data at the time of the preparation of this plan and is considered to be adequate for planning purposes. The map has only been generated for those hazards that can be clearly identified using mapping techniques and technologies, and for which the Town of Newfield has significant exposure. The map is provided on the next page.



Figure 9.15-1. Town of Newfield Hazard Area Extent and Location Map



Action Worksheet			
<b>Project Name:</b>	VanBuskirk Gulf Residents Flood Mitigation Initiative		
<b>Project Number:</b>	2021-T NEWFIELD-004		
Risk / Vulnerability			
<b>Hazard(s) of Concern:</b>	Flood		
<b>Description of the Problem:</b>	Overflowing creek, history of flooding during heavy rain, basements filling up causing personal property damage during the June 2015 flood. Culvert needed to be rightsized (enlarged) on Stone Jug Road. Flow of the creeks course was altered by 4" per hour rains carrying debris downstream where it jammed up the culvert effectively washing out the culvert.		
Action or Project Intended for Implementation			
<b>Description of the Solution:</b>	Replace culvert and conduct rightsizing to mitigate future washout. In addition, Work with the town DPW and the SWCD to conduct additional assessment on additional structural reinforcement measures and flood control barriers to reduce washout in the future and prevent overflow. The culvert installation would be phase 1 of the entire project. Finally, conduct outreach to residents that are affected by flood and provide mitigation and retrofitting solutions.		
<b>Is this project related to a Critical Facility?</b>		Yes <input type="checkbox"/>	No <input checked="" type="checkbox"/>
<b>Is the critical facility located in the 1% annual chance flood area?</b>		Yes <input type="checkbox"/>	No <input checked="" type="checkbox"/>
(If yes, this project must intend to protect the 500-year flood event or the actual worse case damage scenario, whichever is greater)			
<b>Level of Protection:</b>	500-year flood	<b>Estimated Benefits (losses avoided):</b>	Repetitive Flooding
<b>Useful Life:</b>	NA	<b>Goals Met:</b>	1,3
<b>Estimated Cost:</b>	\$25,000 to \$100,000	<b>Mitigation Action Type:</b>	SIP
Plan for Implementation			
<b>Prioritization:</b>	High	<b>Desired Timeframe for Implementation:</b>	6 months once funding secured
<b>Estimated Time Required for Project Implementation:</b>	2 years	<b>Potential Funding Sources:</b>	Municipal Budget
<b>Responsible Organization:</b>	Town, DEC, Soil and Water and property owners.	<b>Local Planning Mechanisms to be Used in Implementation if any:</b>	Land Use
Three Alternatives Considered (including No Action)			
<b>Alternatives:</b>	<b>Action</b>	<b>Estimated Cost</b>	<b>Evaluation</b>
	No Action	\$0	Current problem continues
	maintain forested riparian corridor	High	Protection of private homes, but does not resolve flood issue per se.
	VanBuskirk Gulf Residents Flood Mitigation Initiative	High	Comprehensive Flood Mitigation
Progress Report (for plan maintenance)			
<b>Date of Status Report:</b>			
<b>Report of Progress:</b>			



<b>Update Evaluation of the Problem and/or Solution:</b>	
--	--



Action Worksheet		
<b>Project Name:</b>	VanBuskirk Gulf Residents Flood Mitigation Initiative	
<b>Project Number:</b>	2021-T NEWFIELD-004	
Criteria	Numeric Rank (-1, 0, 1)	Provide brief rationale for numeric rank when appropriate
<b>Life Safety</b>	1	The project protects property
<b>Property Protection</b>	1	The project protects property
<b>Cost-Effectiveness</b>	1	The project is cost effective
<b>Technical</b>	1	The project is technically feasible
<b>Political</b>	1	There is no political issues with the project
<b>Legal</b>	1	There are no legal complications for this project
<b>Fiscal</b>	-1	The Town is not able to fund the project without any external assistance.
<b>Environmental</b>	1	The project has a positive impact on the environment
<b>Social</b>	1	The project will have a positive social impact on the community
<b>Administrative</b>	1	The administration is fully supportive of the project
<b>Multi-Hazard</b>	1	The project covers multiple hazards of concern
<b>Timeline</b>	1	The timeline is reasonable given the project
<b>Agency Champion</b>	1	Yes
<b>Other Community Objectives</b>	1	Yes
<b>Total</b>	12	
<b>Priority (High/Med/Low)</b>	High	



Action Worksheet			
<b>Project Name:</b>	Shelter Valley Residents		
<b>Project Number:</b>	2021-T NEWFIELD-003		
Risk / Vulnerability			
<b>Hazard(s) of Concern:</b>	Flood		
<b>Description of the Problem:</b>	Overflowing creek, history of flooding during heavy rain, basements and first floor filling up causing personal property damage. During the June 2015 heavy flows from Benjamin Hill carving out landslides along Depot Road carrying debris downstream to Shelter Valley resulting in first floor flooding throughout the Shelter Valley neighborhood.		
Action or Project Intended for Implementation			
<b>Description of the Solution:</b>	Streambank stabilization of the West Branch of the Cayuga Lake Inlet will be needed. Work with the Soil and Water Conservation District to develop engineering plan to stabilize banks and mitigate overflow of creek/ flooding of properties. In addition, conduct outreach to neighborhood residents and provide potential mitigation and retrofitting solutions to mitigate future flood damage.		
<b>Is this project related to a Critical Facility?</b>		Yes <input type="checkbox"/>	No <input checked="" type="checkbox"/>
<b>Is the critical facility located in the 1% annual chance flood area?</b>		Yes <input type="checkbox"/>	No <input checked="" type="checkbox"/>
(If yes, this project must intend to protect the 500-year flood event or the actual worse case damage scenario, whichever is greater)			
<b>Level of Protection:</b>	500-year flood	<b>Estimated Benefits (losses avoided):</b>	Flood prevention
<b>Useful Life:</b>	NA	<b>Goals Met:</b>	1,3
<b>Estimated Cost:</b>	\$100,000 to \$500,000	<b>Mitigation Action Type:</b>	SIP
Plan for Implementation			
<b>Prioritization:</b>	High	<b>Desired Timeframe for Implementation:</b>	1 year once funding secured
<b>Estimated Time Required for Project Implementation:</b>	2 years	<b>Potential Funding Sources:</b>	FMA, HMA, BRIC CDGB
<b>Responsible Organization:</b>	Town, DEC, Soil and Water, railroad and property owners.	<b>Local Planning Mechanisms to be Used in Implementation if any:</b>	Preservation and Mitigation
Three Alternatives Considered (including No Action)			
<b>Alternatives:</b>	<b>Action</b>	<b>Estimated Cost</b>	<b>Evaluation</b>
	No Action	\$0	Current problem continues
	Streambank stabilization	\$100,000 to \$500,000	At the discretion of the DEC
	Building the berm	\$25,000 to \$100,000	Protection of private homes
Progress Report (for plan maintenance)			
<b>Date of Status Report:</b>			
<b>Report of Progress:</b>			
<b>Update Evaluation of the Problem and/or Solution:</b>			



Action Worksheet		
<b>Project Name:</b>	Shelter Valley Residents	
<b>Project Number:</b>	2021-T NEWFIELD-003	
Criteria	Numeric Rank (-1, 0, 1)	Provide brief rationale for numeric rank when appropriate
<b>Life Safety</b>	1	The project protects property
<b>Property Protection</b>	1	The project protects property
<b>Cost-Effectiveness</b>	1	The project is cost effective
<b>Technical</b>	1	The project is technically feasible
<b>Political</b>	1	There are no political issues with the project
<b>Legal</b>	1	There are no legal complications for this project
<b>Fiscal</b>	-1	The Town is not able to fund the project without any external assistance.
<b>Environmental</b>	1	The project has a positive impact on the environment
<b>Social</b>	1	The project will have a positive social impact on the community
<b>Administrative</b>	1	The administration is fully supportive of the project
<b>Multi-Hazard</b>	1	The project covers multiple hazards of concern
<b>Timeline</b>	1	The timeline is reasonable given the project
<b>Agency Champion</b>	1	Yes
<b>Other Community Objectives</b>	1	Yes
<b>Total</b>	12	
<b>Priority (High/Med/Low)</b>	High	





Action Worksheet			
<b>Project Name:</b>	Sewer Study		
<b>Project Number:</b>	2021-T NEWFIELD-005		
Risk / Vulnerability			
<b>Hazard(s) of Concern:</b>	Flood, Severe Storm		
<b>Description of the Problem:</b>	Increased wastewater inflow during heavy rains causes backup and overflow of existing town treatment facility. With projected precipitation, this is likely to worsen so a solution will need to be developed, as the Town does not have the technical capacity to assess and develop mitigation measures for the existing facility.		
Action or Project Intended for Implementation			
<b>Description of the Solution:</b>	Conduct a study of water inflow and out flow, leak testing and increase of the leech reduce backup and overflow. This will require a hiring of an engineering firm as well as the collaboration with the Town public works. The second phase would be to implement to solutions developed by the firm. This will be a preliminary study from which technical proposals will be developed. Affiliated municipal officials that rely on this system would need to be stakeholders for this project.		
<b>Is this project related to a Critical Facility?</b>		Yes <input checked="" type="checkbox"/>	No <input type="checkbox"/>
<b>Is the critical facility located in the 1% annual chance flood area?</b>		Yes <input type="checkbox"/>	No <input checked="" type="checkbox"/>
(If yes, this project must intend to protect the 500-year flood event or the actual worse case damage scenario, whichever is greater)			
<b>Level of Protection:</b>	500-year	<b>Estimated Benefits (losses avoided):</b>	Prevent sewage overflow/increased capacity
<b>Useful Life:</b>	30 years	<b>Goals Met:</b>	1,5
<b>Estimated Cost:</b>	\$100,000	<b>Mitigation Action Type:</b>	SIP
Plan for Implementation			
<b>Prioritization:</b>	High	<b>Desired Timeframe for Implementation:</b>	6 months once funding received
<b>Estimated Time Required for Project Implementation:</b>	2 years	<b>Potential Funding Sources:</b>	FMA, NYSDEC Environmental Protection & Improvement Grants and Clean Water Act Section 604(b) Water Quality Planning Grants
<b>Responsible Organization:</b>	Town of Newfield	<b>Local Planning Mechanisms to be Used in Implementation if any:</b>	Local Planning Mechanisms
Three Alternatives Considered (including No Action)			
<b>Alternatives:</b>	<b>Action</b>	<b>Estimated Cost</b>	<b>Evaluation</b>
	No Action	\$0	Current problem continues
	Identify where stormwater may be infiltrating	Lower cost	Lower cost but actually not fully solve the issue
	Sewer Study	High cost	Best alternative
Progress Report (for plan maintenance)			
<b>Date of Status Report:</b>			
<b>Report of Progress:</b>			



<b>Update Evaluation of the Problem and/or Solution:</b>	

Action Worksheet		
<b>Project Name:</b>	Sewer Study	
<b>Project Number:</b>	2021-T NEWFIELD-005	
Criteria	Numeric Rank (-1, 0, 1)	Provide brief rationale for numeric rank when appropriate
<b>Life Safety</b>	1	The project protects property
<b>Property Protection</b>	1	The project protects property
<b>Cost-Effectiveness</b>	1	The project is cost effective
<b>Technical</b>	0	The project might require some technical expertise.
<b>Political</b>	1	There is no political issues with the project
<b>Legal</b>	1	There are no legal complications for this project
<b>Fiscal</b>	-1	The Town is not able to fund the project without any external assistance.
<b>Environmental</b>	1	The project has a positive impact on the environment
<b>Social</b>	1	The project will have a positive social impact on the community
<b>Administrative</b>	1	The administration is fully supportive of the project
<b>Multi-Hazard</b>	1	The project covers multiple hazards of concern
<b>Timeline</b>	1	The timeline is reasonable given the project
<b>Agency Champion</b>	1	Yes
<b>Other Community Objectives</b>	1	Yes
<b>Total</b>	11	
<b>Priority (High/Med/Low)</b>	High	



Action Worksheet			
<b>Project Name:</b>	Develop Resilient Communications System		
<b>Project Number:</b>	2021-T NEWFIELD-001		
Risk / Vulnerability			
<b>Hazard(s) of Concern:</b>	All Hazards		
<b>Description of the Problem:</b>	Lack of adequate broadband throughout the Town (particularly beyond hamlet) limiting residents' availability to medical care, communications, education and remote workforce.		
Action or Project Intended for Implementation			
<b>Description of the Solution:</b>	Work with Spectrum and other entities to install high speed broadband (100 mbps or better) throughout the Town. Initial inventory of housing units without broadband will need to be conducted, before the planning process can begin. Once the inventory is finalized, the town would need to work with the County, and Spectrum to develop a plan to increase capacity in the region.		
<b>Is this project related to a Critical Facility?</b>		Yes <input type="checkbox"/>	No <input checked="" type="checkbox"/>
<b>Is the critical facility located in the 1% annual chance flood area?</b>		Yes <input type="checkbox"/>	No <input checked="" type="checkbox"/>
(If yes, this project must intend to protect the 500-year flood event or the actual worse case damage scenario, whichever is greater)			
<b>Level of Protection:</b>	500-year flood	<b>Estimated Benefits (losses avoided):</b>	High
<b>Useful Life:</b>	20 years	<b>Goals Met:</b>	1,5
<b>Estimated Cost:</b>	\$100,000	<b>Mitigation Action Type:</b>	SIP
Plan for Implementation			
<b>Prioritization:</b>	High	<b>Desired Timeframe for Implementation:</b>	1 year once funding secured
<b>Estimated Time Required for Project Implementation:</b>	3 years	<b>Potential Funding Sources:</b>	The New NY Broadband Program, Municipal Budget, Climate Smart Communities
<b>Responsible Organization:</b>	Town, NYS and federal governments, private enterprise, partnering with neighboring counties and communities.	<b>Local Planning Mechanisms to be Used in Implementation if any:</b>	None
Three Alternatives Considered (including No Action)			
<b>Alternatives:</b>	<b>Action</b>	<b>Estimated Cost</b>	<b>Evaluation</b>
	No Action	\$0	Current problem continues
	Over the air Wi-Fi	\$25,000 /installation	Speed is not ideal but far better than current alternatives.
	High speed fiber connections	\$100,000	Unknown cost to end users, middle mile and last mile expenses are unknown at this time.
Progress Report (for plan maintenance)			
<b>Date of Status Report:</b>			
<b>Report of Progress:</b>			



<b>Update Evaluation of the Problem and/or Solution:</b>	
--	--

<b>Action Worksheet</b>		
<b>Project Name:</b>	Develop Resilient Communications System	
<b>Project Number:</b>	2021-T NEWFIELD-001	
<b>Criteria</b>	<b>Numeric Rank (-1, 0, 1)</b>	<b>Provide brief rationale for numeric rank when appropriate</b>
<b>Life Safety</b>	1	The project protects property
<b>Property Protection</b>	1	The project protects property
<b>Cost-Effectiveness</b>	1	The project is cost effective
<b>Technical</b>	0	The project might require some technical expertise.
<b>Political</b>	1	There is no political issues with the project
<b>Legal</b>	1	There are no legal complications for this project
<b>Fiscal</b>	-1	The Town is not able to fund the project without any external assistance.
<b>Environmental</b>	1	The project has a positive impact on the environment
<b>Social</b>	1	The project will have a positive social impact on the community
<b>Administrative</b>	1	The administration is fully supportive of the project
<b>Multi-Hazard</b>	1	The project covers multiple hazards of concern
<b>Timeline</b>	1	The timeline is reasonable given the project
<b>Agency Champion</b>	1	Yes
<b>Other Community Objectives</b>	1	Yes
<b>Total</b>	11	
<b>Priority (High/Med/Low)</b>	High	

