

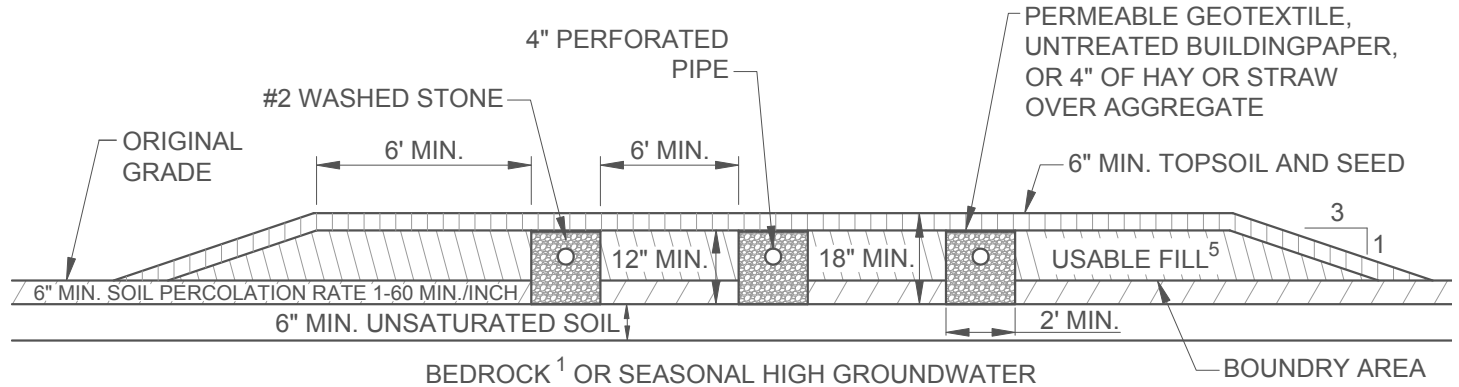
# Details and Specifications #8 Downstream Modified Absorption Trenches (DMAT)

Frank Kruppa Public  
Health Director  
55 Brown Road Ithaca,  
NY 14850-1247

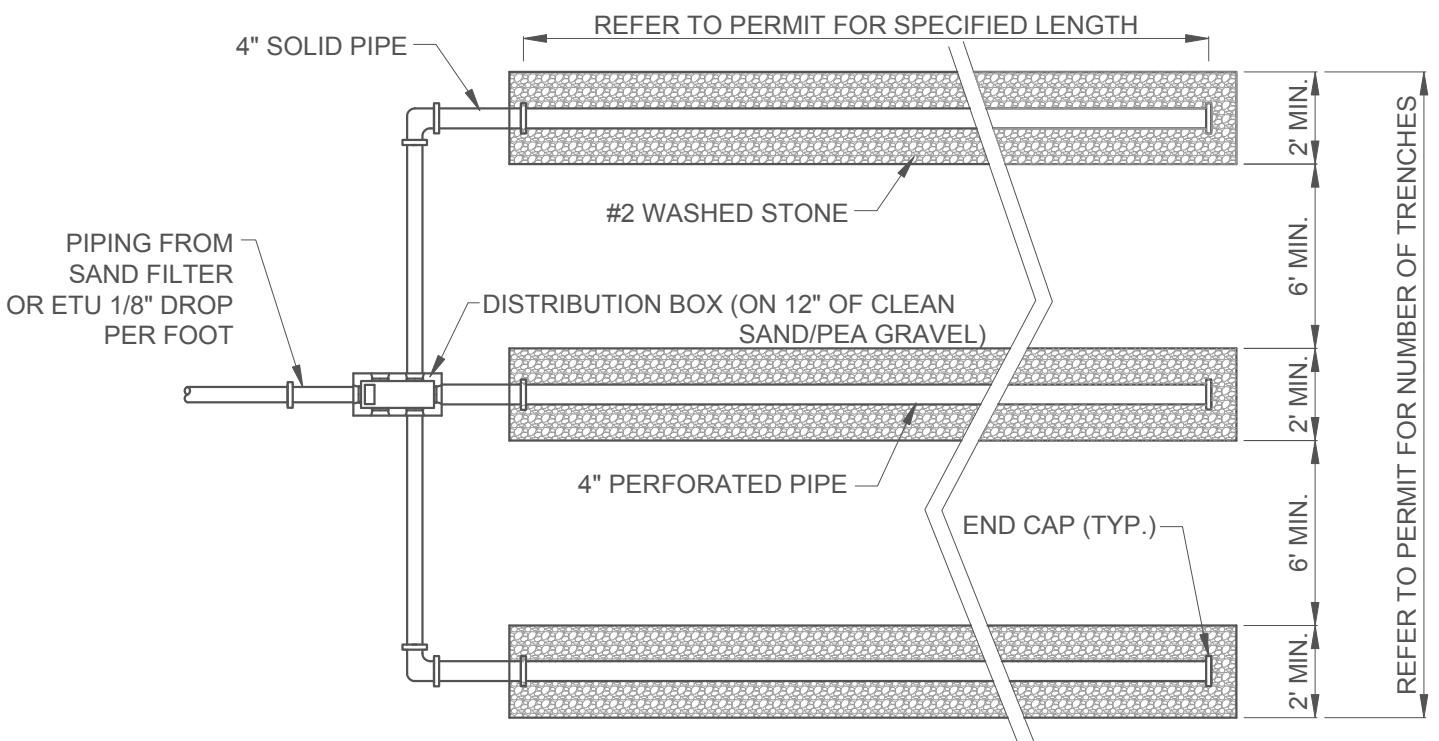
Inclusion Through Diversity

ENVIRONMENTAL HEALTH DIVISION  
www.tompkinscountyny.gov/health/eh  
email: tceh@tompkins-co.org

Ph: (607) 274-6688  
Fx: (607) 274-6695



SIDE VIEW - NOT TO SCALE



TOP VIEW - NOT TO SCALE

**ADDITIONAL SPECIFICATIONS:**

- REFER TO SEPARATION DISTANCES TABLE FOR MORE INFORMATION ON VERTICAL SEPARATION DISTANCES TO BEDROCK.
- TRENCHES SHOULD BE AS LONG AS POSSIBLE TO MINIMIZE PARALLEL TRENCHES.
- DISTRIBUTOR LENGTH SHALL NOT EXCEED 60 FEET.
- DISTRIBUTORS IN AGGREGATE MUST BE SLOPED 1/16" TO 1/32" PER FOOT.
- USABLE FILL MUST BE SIMILAR TO THE INSITU PERMEABLE SOIL.
- SYSTEM DEPTH (INCLUDING A MINIMUM OF 6" OF PERMEABLE COVER) MUST BE AT LEAST 18", WITH A MINIMUM OF 12" OF AGGREGATE CONTACTING PERMEABLE SOIL SIDEWALL OF TRENCH.
- SEE PERMIT FOR MAXIMUM BOTTOM DEPTH OF TRENCHES.

These specifications are adapted from the NYSDOH Residential Onsite Wastewater Treatment System Design Handbook and the Tompkins County Sanitary Code.