

Tompkins County ADA Transition Plan - 2017

Based on the 2010 ADA Standards for Accessible Design

Project: Tompkins County Transition Plan 2017

Building: Tompkins County Workforce Development

Location: Gateway Center, 401 E. State St, Ithaca NY

Date: May 25, 2017

Surveyor(s): Alan Lockett – Assistant Director of Facilities



ADA Checklist for Existing Facilities

Priority 1 – Approach & Entrance

Based on the 2010 ADA Standards for Accessible Design



All facilities should have at a minimum an accessible route to a main building entrance.



Institute for Human Centered Design
www.HumanCenteredDesign.org 2014



ADA National Network
www.ADAchecklist.org

The Tompkins County Workforce Investment program is located in a leased space in the Gateway Center on East State Street. The Gateway Center is a four story multi-use building consisting of restaurants, office space, and the History Center.

There are two main entrances to the Center with the east entrance off of the main parking lot the most widely used. The west entrance is used for deliveries, and by patrons to the two restaurants.



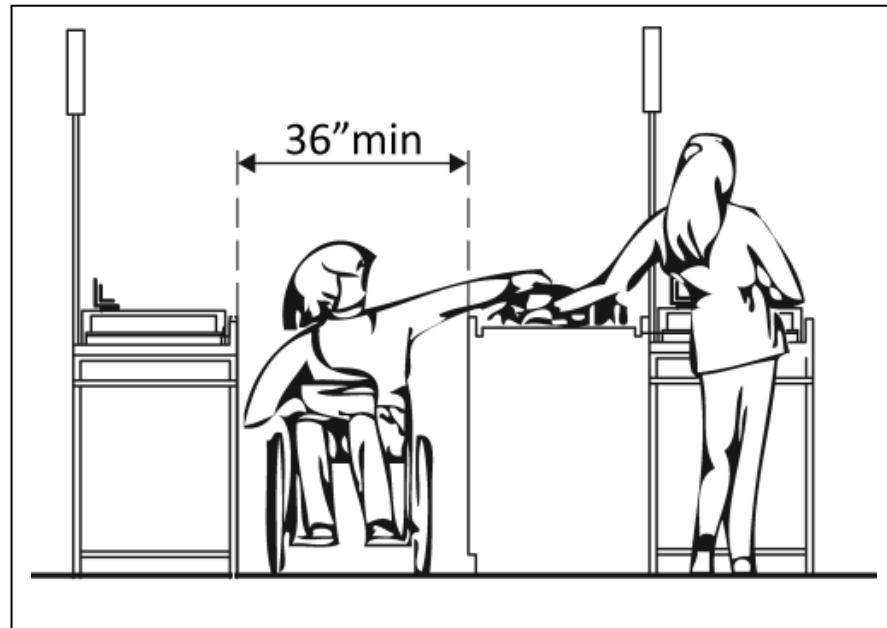
The above photo is approaching the west side of the building from the main parking lot. Accessible parking with curb cuts is available in close proximity to the entrance.

No impediments to building access were noted.

ADA Checklist for Existing Facilities

Priority 2 – Access to Goods & Services

Based on the 2010 ADA Standards for Accessible Design



The layout of the building should allow people with disabilities to obtain goods and services and to participate in activities without assistance.



Institute for Human Centered Design
www.HumanCenteredDesign.org 2014



ADA National Network
www.ADAchecklist.org

Tompkins County Workforce Investment employs two full time staff. They are charged with building community partnerships, executing strategies to develop a skilled workforce, understanding business needs and providing oversight of programs that are designed to meet strategic goals.

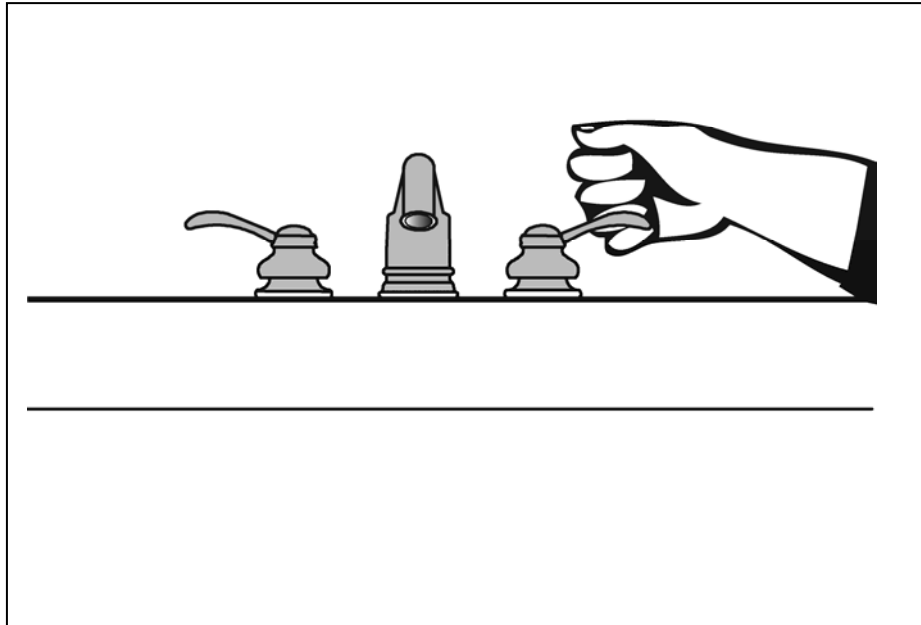
They do not provide any services to the general public requiring visits to their place of work. However, any visitors for meetings or other such business will find the facility to be fully accessible. Hallways are wide, doors have accessible hardware, and a fully accessible elevator is available.



The ADA Checklist for Existing Facilities

Priority 3 - Toilet Rooms

Based on the 2010 ADA Standards for Accessible Design



When toilet rooms are open to the public they should be accessible to people with disabilities.



Institute for Human Centered Design
www.HumanCenteredDesign.org 2014



ADA National Network
www.ADAchecklist.org

The Workforce Investment office does not have toilet rooms in their space. Separate and fully accessible toilet rooms are available for men and women located on each floor of the Gateway Center.



ADA Checklist for Existing Facilities

Priority 4 – Additional Access

Based on the 2010 ADA Standards for Accessible Design



The layout of the building should allow people with disabilities to obtain goods and services and to participate in activities without assistance.



Institute for Human Centered Design
www.HumanCenteredDesign.org 2014



ADA National Network
www.ADAchecklist.org

The building as well as the space occupied by the Workforce Investment Board is laid out such that persons with disabilities have access to all of the spaces contained therein. Toilet rooms, drinking fountains, directional signage, and fire alarms are all on the accessible route.



ADA Checklist for Existing TC Facilities

Summary of items that could be improved.

Building: TC Workforce Investment

Date Inspected: May 25, 2017

Priority 1

Item	Correction	Target Date	Date Completed
None			

Priority 2

Item	Correction	Target Date	Date Completed
None			

Priority 3

Item	Correction	Target Date	Date Completed
None			

Priority 4

Item	Correction	Target Date	Date Completed
None			