

Tompkins County Youth Services Department Summary of 2006 Needs Assessment Data

Data are organized under Touchstone areas. (For more information about NYS Touchstones please go to www.ccf.state.ny.us/initiatives/touchstones.htm.)

Demographics

US Census estimates show a decrease in Tompkins County's youth population from 2000-04 while showing an increase in overall population.

Tompkins County Population by Town, Actual and Estimated, 2000-2005

	Caroline	Danby	Dryden	Enfield	Groton	Ithaca city	Ithaca town	Lansing	Newfield	Ulysses	Tompkins County
July-05	3,024	3,139	13,924	3,505	5,853	29,766	19,859	10,876	5,152	4,920	100,018
July-04	3,021	3,110	13,907	3,474	5,858	29,952	19,896	10,871	5,152	4,894	100,135
July-03	3,003	3,072	13,783	3,445	5,822	29,834	19,749	10,733	5,123	4,841	99,405
July-02	2,976	3,039	13,670	3,418	5,798	29,886	19,051	10,590	5,097	4,799	98,324
July-01	2,925	3,009	13,480	3,380	5,756	29,702	18,841	10,532	5,081	4,759	97,465
April-00	2,910	3,007	13,532	3,369	5,794	28,775	18,710	10,521	5,108	4,775	96,501
% change, 2000-2005	+3.9%	+4.4%	+2.9%	+4.0%	+1.0%	+1.6%	+9.1%	+3.4%	+0.9%	+3.0%	+3.6%

Tompkins County Population by Age Group, Actual and Estimated, 2000-2004

	0-4 years	5-13 years	14-17 years	18-24 years	25-44 years	45-64 years	65-84 years	85 + years	0-17 total	18-44 total	45-64 total	65+ total
2004	4,091	8,082	4,405	21,811	31,873	20,182	8,162	1,529	16,578	53,684	20,182	9,691
2003	4,069	8,267	4,459	24,819	28,383	19,831	8,113	1,464	16,795	53,202	19,831	9,577
2002	4,062	8,521	4,495	26,123	26,276	19,393	8,076	1,378	17,078	52,399	19,393	9,454
2001	4,101	8,868	4,650	25,919	25,504	19,058	8,034	1,331	17,619	51,423	19,058	9,365
2000	4,285	9,257	4,757	25,054	25,250	18,644	8,005	1,252	18,296	50,304	18,644	9,257
% change, 2000-04	-4.5%	-12.7%	-7.4%	-12.9%	+26.2%	+8.2%	+2.0%	+22.1%	-9.4%	+6.7%	+8.2%	+4.7%

Data for 2005 will be released in late 2006.

(Source: U.S. Census)

1. Economic Security

1.1 Tompkins County Residents Below 200% of Federal Poverty Level

	2000 Population	% below 200% Federal Poverty Level	# below 200% Federal Poverty Level
Caroline	2,910	29%	844
Danby	3,007	17%	511
Dryden	13,532	28%	3,789
Enfield	3,369	34%	1,145
Groton	5,794	25%	1,449
Ithaca, city	28,775	53%	15,107
Ithaca, town	18,710	26%	4,865
Lansing	10,521	21%	2,209
Newfield	5,108	33%	1,686
Ulysses	4,775	26%	1,242
Tompkins County Total	96,501	34%	32,810

(Source: U.S. Census)

34% of Tompkins County population, 32,810 people, live below 200% of the Federal Poverty Level. The urban/rural split of the estimated population below 200% of the federal poverty level is 66% urban to 34% rural.

1.2 Poverty estimates for Tompkins County

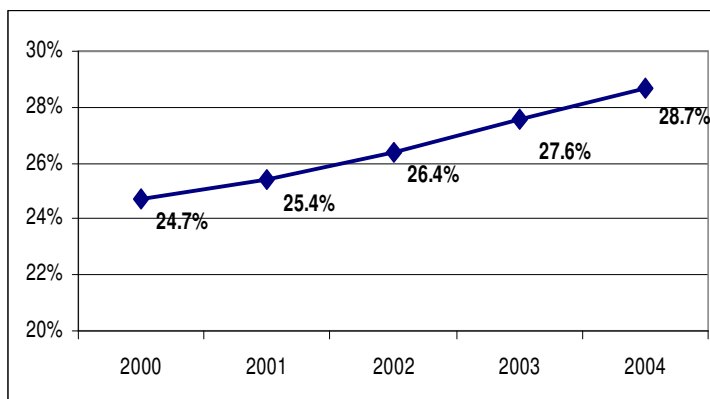
	All ages	Ages 0 – 17	Ages 5-17 in families
	%	%	%
2003	12.9	13.5	12.5
2002	12.6	12.3	11.1
2001	12.5	11.6	10.6
2000	12	12	10.9

(Source: U.S. Census SAIPE – Small area income and poverty estimates)

Census estimates show an increase from 2000 to 2003 in the number of youth and people of all ages in poverty.

1.3 Student Participation in Free & Reduced Lunch Program

Tompkins County Total



Participation by Tompkins County students in free and reduced school lunch programs increased from 2000 to 2004.

Eligibility for a family of 4, July, 2005
 Free lunch - \$25,155
 Reduced lunch - \$35,798

By District

	2002-03			2003-04			2004-05		
	Free	Reduced	Total	Free	Reduced	Total	Free	Reduced	Total
Dryden	20.4%	5.5%	25.9%	20.4%	7.6%	28.0%	16.1%	5.1%	21.2%
Groton	19.2%	10.2%	29.4%	21.8%	11.5%	33.3%	22.5%	12.0%	34.5%
Ithaca	21.1%	6.3%	27.4%	23.0%	6.6%	29.6%	21.0%	5.8%	26.8%
Lansing	8.4%	2.9%	11.3%	9.0%	3.3%	12.3%	13.6%	7.7%	21.3%
Newfield	34.5%	13.3%	47.8%	28.0%	10.5%	38.5%	37.7%	13.5%	51.2%
Trumansburg	13.7%	8.3%	22.0%	14.9%	7.2%	22.1%	23.4%	9.9%	33.3%
Tompkins Co. Total	19.5%	6.9%	26.4%	20.4%	7.2%	27.6%	21.2%	7.5%	28.7%

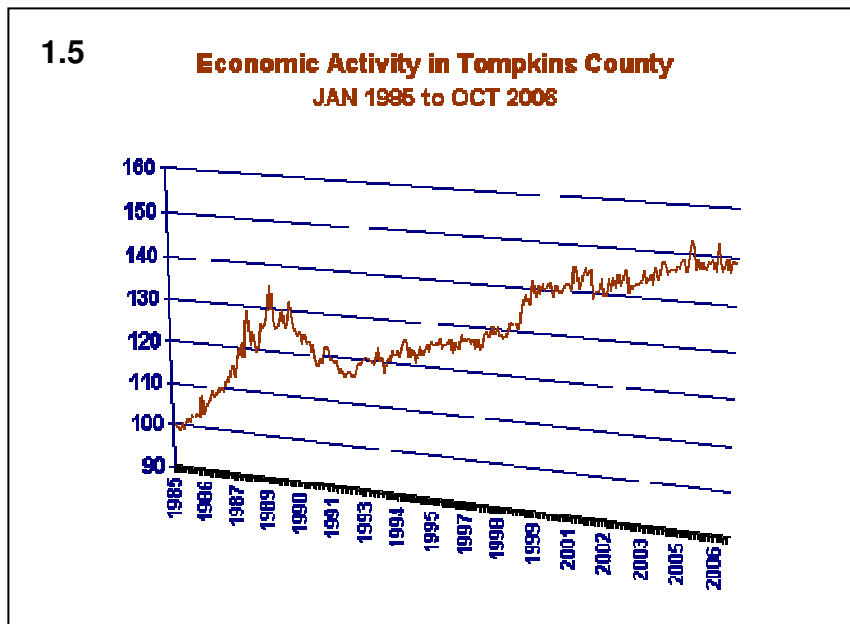
(Source: NYS Education Dept. School Report Cards)

1.4 Youth Served in CYF funded & Local Youth Employment Programs

	Youth Employment Service	Learning Web	Municipal Jobs Program	Job LINK	Summer TANF
2005	231	336	273	154	90
2004	291	292	254	145	65
2003	301	314	356	n/a	n/a

Over 1000 youth have worked or received job skills training in one of several local programs in the last two years.

Youth Employment Service, a program of the Ithaca Youth Bureau
 Learning Web, volunteer and stipended apprenticeships for youth
 Municipal Jobs Program, youth jobs and job training funded in each Tompkins County town
 Job LINK, WIA funded youth employment program for income eligible youth facing barriers to employment
 (Source: Annual program reports to Tompkins County Youth Services Dept.)



The Tompkins County economy has grown 48.8 percent since Jan. 1985. From 1985 until early 1989, the County economy grew at a rapid clip. A recession brought the Index down in March 1992. The 36 month slide was much longer and more severe than the national recession which lasted only 16 months. Since then, the County economy has recovered, but annual growth rates of 2 percent are more typical these days.

Source: *Index of Economic Activity in Tompkins County*, Elia Kacapyr, Ithaca College

1.6 Tompkins County Annual Unemployment Rates, 2000 – 2005

	Tompkins	NYS
2005	3.2%	5.0%
2004	3.6%	5.8%
2003	3.6%	6.4%
2002	3.8%	6.2%
2001	3.2%	4.9%
2000	3.3%	4.5%

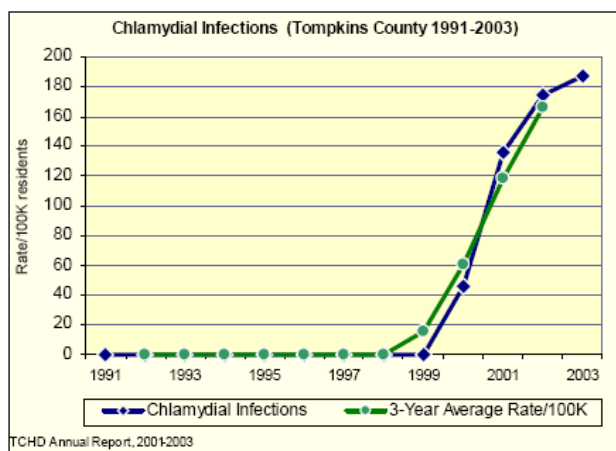
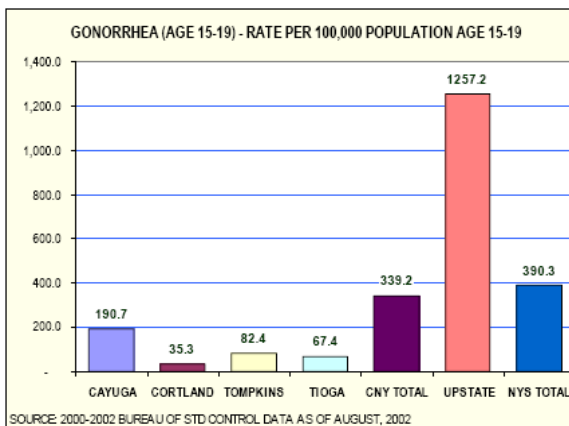
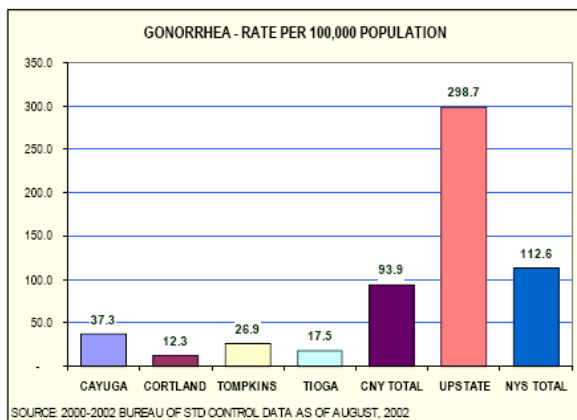
Tompkins County's unemployment rate is significantly lower than the state rate and is often the lowest in the state.

(not seasonally adjusted)

(Source: NYS Dept. of Labor)

2. Physical and Emotional Health

2.1 Sexually Transmitted Diseases – Gonorrhea, Syphilis, Chlamydia



There have been no cases of Early Syphilis for ages 15-19 in Tompkins County in many years. The rate of Gonorrhea incidence in Tompkins County is quite low though the numbers for the ages 15-19 are higher. Local health department records show a dramatic increase in Chlamydial infections from 1999-2003.

(Source: Tompkins County Health Dept. *Community Health Assessment, 2005-2010*)

2.2 Hospitalizations Resulting from Self-Inflicted Injuries

3 year average rate per 100,000 youth

	Ages 10-14			Ages 15-19		
	1996-98	1999-2001	2001-03	1996-98	1999-2001	2001-03
Tompkins	17.1	37.4	37.8	110.0	67.2	90.0
New York State (excl. NYC)	24.3	19.1	22.9	120.7	98.7	104.9

(Source: NYS Touchstones)

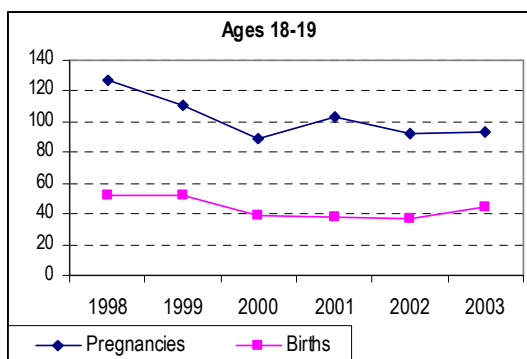
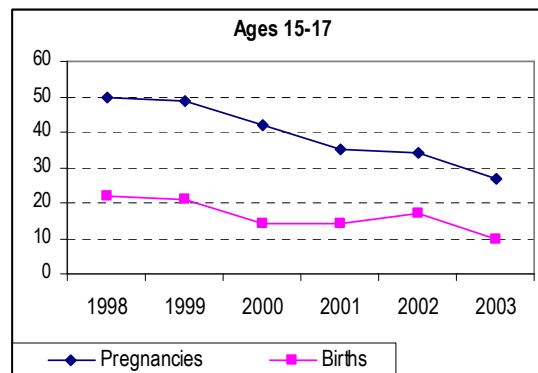
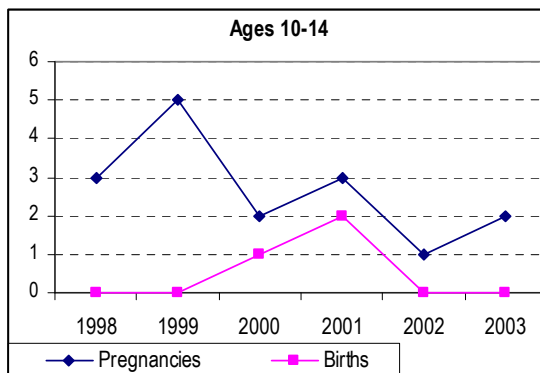
In New York State, suicide is the third leading cause of death for ages 15-19. Hospitalizations for self-inflicted injury is an important indicator of suicide "attempts" and mental health status.

2.3 Tompkins County Deaths from Suicide < age 20

2004	1
2003	0
2002	2
2001	1
2000	1

(Source: NYS Dept. of Health)

2.4 Pregnancies and Births to Tompkins County Teens



Though there are small increases some years, overall teen pregnancies and births in Tompkins County have declined significantly over the last 15 years.

(Source: NYS Dept. of Health)

2.5 Ithaca City School District Student Substance Use in the previous 30 days

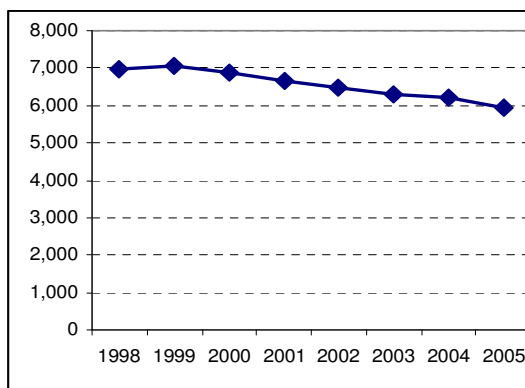
	Alcohol			Cigarettes			Marijuana		
	2005	2002	1999	2005	2002	1999	2005	2002	1999
All students	36%	n/a	n/a	13%	n/a	n/a	20%	n/a	n/a
Grade 6	11%	9%	8%	2%	3%	4%	<1%	<1%	1%
Grade 8	33%	22%	22%	10%	11%	16%	16%	9%	7%
Grade 10	44%	40%	46%	18%	10%	21%	31%	22%	19%
Grade 12	57%	53%	58%	22%	24%	32%	32%	31%	27%

(Source: 2005 ICSD Student Life and Culture Survey)

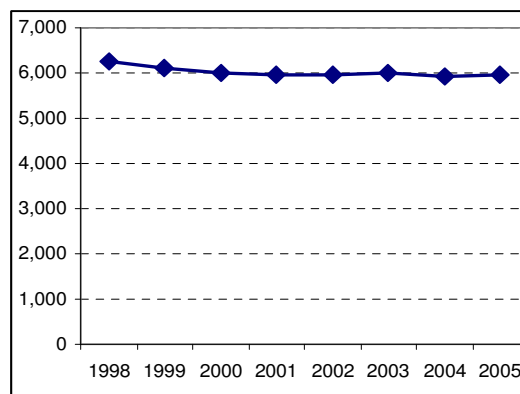
3. Education

3.1 School enrollment

Grade K-6



Grade 7-12

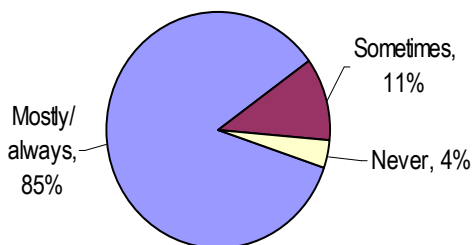


Student enrollment is declining at both the primary and secondary levels.

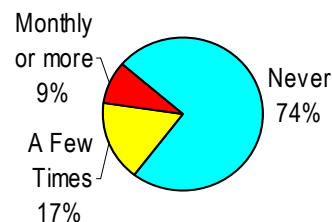
(Source: TST BOCES)

3.2 ICSD Students' experience with bullying in school and school safety

Students Feeling Safe at School



Students Physically Bullied & How Often

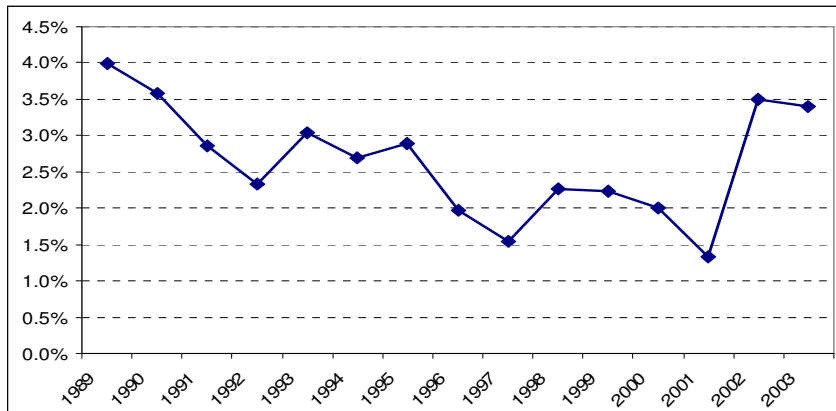


While most ICSD students usually feel safe at school, a small number experience regular bullying.

(Source: 2005 ICSD Student Life and Culture Survey)

3.3 Tompkins County School Drop Out Rates

County



Enhanced graduation requirements took effect in 2003, requiring all high school students to pass Regents tests in 4 subjects in order to graduate. Drop out rates increased at that time.

(Source: NYS Education Dept. School Report Cards)

By District

	Tompkins	Dryden	Groton	Ithaca	Lansing	Newfield	Tburg
2003	3.4%	3.9%	5.1%	3.6%	1.4%	5.8%	0.2%
2002	3.5%	0.6%	3.8%	5.4%	2.1%	1.8%	2.2%
2001	1.3%	0.7%	4.2%	0.9%	0.2%	3.3%	1.4%
2000	2.0%	5.3%	2.6%	1.4%	1.6%	1.0%	0.8%
1999	2.2%	5.9%	3.6%	0.7%	2.3%	3.7%	1.3%
1998	2.3%	3.3%	1.9%	1.7%	1.2%	5.2%	2.0%

School drop out rates vary by year and by district.

(Source: NYS Education Dept. School Report Cards)

3.4 Tompkins high school grads' post-high school plans

	4 yr College	2 yr College	Other Post-Secondary	Military	Employment	Other
2004	57%	29%	1%	3%	8%	3%
2003	57%	29%	1%	2%	7%	4%
2002	56%	30%	2%	2%	7%	3%
2001	55%	27%	1%	2%	11%	4%

Most local high school students plan to continue in a formal education program after high school.

(Source: NYS Education Dept. School Report Cards)

3.5 Percent of High School Graduates who earn Regents Diplomas

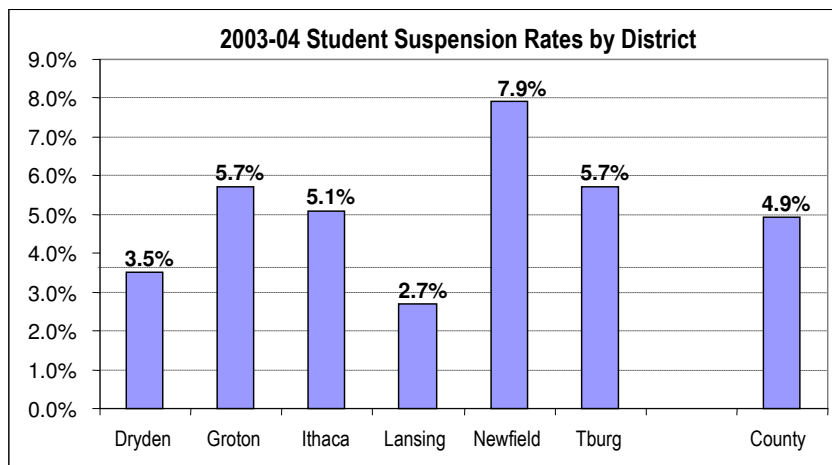
	Tompkins	Dryden	Groton	Ithaca	Lansing	Newfield	Tburg
2003	65%	39%	47%	84%	47%	57%	62%
2002	66%	45%	56%	72%	66%	61%	69%
2001	68%	36%	54%	63%	69%	37%	68%
2000	57%	51%	65%	79%	65%	47%	67%
1999	65%	64%	49%	67%	82%	50%	65%

Averaging the past 5 years, Ithaca, Lansing and Trumansburg have had the highest rate of graduates with Regents Diplomas.

(Source: NYS Education Dept. School Report Cards)

3.7 Tompkins County K-12 Student Suspensions

	County Total		Dryden		Groton		Ithaca		Lansing		Newfield		Tburg	
	#	%	#	%	#	%	#	%	#	%	#	%	#	%
2003	596	4.9%	66	3.5%	63	5.7%	278	5.1%	35	2.7%	74	7.9%	80	5.7%
2002	408	3.3%	60	3.1%	56	4.9%	161	2.9%	14	1.0%	40	4.1%	77	5.3%
2001	565	4.5%	92	4.6%	58	4.8%	254	4.5%	17	1.3%	69	7.4%	91	6.2%
2000	502	3.9%	88	4.3%	44	3.6%	247	4.3%	29	2.1%	52	5.4%	42	2.9%
1999	397	3.0%	89	4.2%	31	2.4%	141	2.4%	14	1.0%	73	7.5%	49	3.3%
1998	399	3.0%	66	3.1%	43	3.4%	162	2.8%	20	1.5%	56	5.5%	52	3.5%



High school suspension numbers and rates in 2003 were higher in all school districts than numbers and rates five years earlier in 1998.

(Source: NYS Education Dept. School Report Cards)

3.8 Percent of Tompkins County Students Meeting NYS Standards

Grade 4	English Language Arts					Math					Science				
	2000	2001	2002	2003	2004	2000	2001	2002	2003	2004	2000	2001	2002	2003	2004
Dryden	60%	51%	68%	59%	68%	68%	71%	89%	86%	90%	75%	71%	85%	86%	87%
Groton	50%	65%	66%	53%	70%	72%	58%	74%	76%	78%	79%	83%	90%	89%	90%
Ithaca	68%	75%	79%	69%	77%	77%	81%	89%	83%	87%	77%	86%	84%	87%	87%
Lansing	68%	71%	65%	67%	71%	82%	87%	81%	84%	95%	81%	89%	84%	92%	84%
Newfield	58%	53%	60%	66%	68%	73%	53%	82%	87%	84%	81%	73%	88%	95%	94%
Trumansburg	76%	76%	75%	71%	75%	90%	90%	93%	98%	91%	88%	86%	92%	97%	96%
Tompkins Co.	65%	68%	72%	65%	73%	77%	76%	87%	85%	88%	79%	83%	86%	89%	89%

Grade 8	English Language Arts					Math					Science			
	2000	2001	2002	2003	2004	2000	2001	2002	2003	2004	2001	2002	2003	2004
Dryden	40%	57%	50%	40%	49%	55%	69%	70%	60%	65%	87%	92%	85%	89%
Groton	48%	41%	39%	32%	55%	57%	57%	41%	63%	57%	91%	91%	89%	77%
Ithaca	56%	66%	63%	82%	58%	58%	72%	64%	74%	63%	93%	91%	88%	85%
Lansing	72%	68%	63%	60%	53%	64%	74%	74%	74%	70%	97%	98%	96%	90%
Newfield	61%	43%	55%	46%	58%	73%	64%	66%	66%	59%	96%	92%	90%	83%
Trumansburg	61%	53%	53%	55%	64%	54%	67%	66%	69%	68%	95%	88%	89%	91%
Tompkins Co.	56%	59%	57%	59%	57%	59%	69%	64%	67%	64%	93%	92%	89%	86%

* Meeting NYS standards = students achieving level 3 or level 4 on standardized tests given in grades 4 and 8.

(Source: NYS Education Dept. School Report Cards)

3.9 Percent of Students Meeting State Standards* by School District and Subgroups

Elementary English Language Arts (grade 4)

2004-05

	District Results	Results by Income Level	
		Economically disadvantaged	Not disadvantaged
Dryden	68%	55%	75%
Groton	70%	63%	76%
Ithaca	77%	48%	89%
Lansing	71%	43%	77%
Newfield	68%	52%	79%
Trumansburg	75%	64%	79%

2003-04

District Results	Results by Income Level	
	Economically disadvantaged	Not disadvantaged
59%	39%	71%
53%	44%	60%
68%	50%	76%
67%	25%	74%
66%	55%	75%
71%	46%	83%

Elementary Mathematics (grade 4)

Dryden	90%	84%	93%
Groton	78%	68%	86%
Ithaca	87%	67%	95%
Lansing	95%	80%	99%
Newfield	84%	69%	94%
Trumansburg	91%	81%	95%

86%	77%	92%
76%	76%	75%
83%	64%	91%
83%	59%	88%
87%	83%	89%
97%	97%	98%

Middle School English Language Arts (grade 8)

Dryden	49%	24%	58%
Groton	55%	28%	67%
Ithaca	58%	24%	69%
Lansing	53%	5%	63%
Newfield	58%	44%	64%
Trumansburg	64%	33%	71%

40%	31%	43%
32%	16%	42%
67%	37%	74%
60%	30%	62%
46%	41%	50%
55%	25%	66%

Middle School Mathematics (grade 8)

Dryden	65%	42%	72%
Groton	57%	35%	66%
Ithaca	63%	29%	74%
Lansing	70%	30%	78%
Newfield	59%	57%	59%
Trumansburg	68%	40%	75%

60%	53%	63%
63%	38%	78%
72%	40%	80%
74%	60%	76%
66%	64%	68%
69%	37%	81%

* "Meeting state standard" = students scoring at level 3 or 4.

(Source: NYS Education Dept. School Report Cards)

3.10 Ithaca City School District Students who say school work is very important to them

	Middle schoolers	High Schoolers
2005	73%	73%
2003	71%	69%

(Source: ICSD Student Life and Culture Survey)

In many school districts, there are great disparities in student success on standardized tests depending on family economic status.

There are similar achievement gaps between students of color and their white counterparts.

4. Citizenship (including PINS, JD's, Youth Violence, Detention)

4.1 Tompkins County Youth in OCFS facility (on 12/31 of year shown)

1999	2
2000	2
2001	3
2002	2
2003	0
2004	1

The number of local youth placed in OCFS facilities has not risen above 3 in the last six years.

(Source: NYS OCFS *Youth in Care Report*)

4.2 PINS (Person in Need of Supervision) and JD's (Juvenile Delinquency)

PINS Complaints - Cases Opened by Reason

	Truancy	Runaway	Incorrigible/Other	Total
1999	55	9	74	138
2000	50	7	99	156
2001	37	6	106	149
2002	52	6	120	178
2003	47	5	136	188
2004	44	10	150	204
2005	34	4	129	167

2002 Comparison Rate
PINS cases opened per 1000 youth

Tompkins' PINS rate (28.1) is higher than that for NYS excl. NYC (17.8)

(Source: Tompkins County Probation Dept., NYS Touchstones)

New Petitions Filed in Family Court (Tompkins Co.)

	PINS	JD
1999	50	38
2000	40	64
2001	53	56
2002	49	75
2003	71	71
2004	60	57
2005	38	75

7/02 – Upper age limit for PINS raised
4/05 – PINS diversion efforts increased

(Sources: Citizens Concerned for Children annual reports (1999-2003), County Attorney's office (2004-05))

PINS Cases – Percent Successfully Adjusted

2003	47%
2004	44%
2005	43%

The percentage of successfully completed cases has remained relatively constant near 45%.

(Source: Tompkins County Probation Dept.)

PINS Cases – Percent Youth Engaged in Services & Percent of Cases with Parental Involvement

	Youth engaged in services	Parental involvement
2003	58%	n/a
2004	59%	33%
2005	64%	36%

(Source: Tompkins County Probation Dept.)

The percentage of PINS youth engaged in services has increased 6% between 2003 and 2005. The county started tracking the number of cases with parental involvement in 2004. The percent of cases with parental involvement increased slightly in 2005.

2005 PINS Referrals

By source

Parent	School	Police	DSS	Other
75	90	0	0	2

By school district

Dryden	8
Groton	15
Ithaca	20
Lansing	3
Newfield	10
Trumansburg	17
Other*	17

2005 is the first year for which local PINS data by school are available.

*Other = TST BOCES Community School, TST BOCES Smith School, William George Agency

By Gender

Male	Female
98	69

By Age

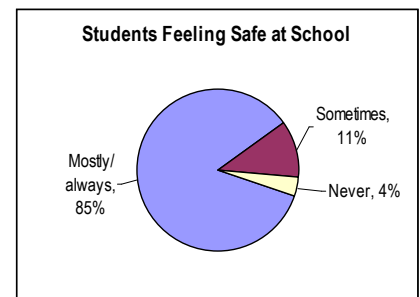
10 & under	11-12	13-15	16-17
9	34	102	22

(Source: Tompkins County Probation Dept.)

4.3 ICSD Student Experience in School with Bullying and Safety

- On a monthly basis, 83% of ICSD students reported witnessing name calling and putdowns at school as compared to the 31% who said they experienced these hurtful behaviors monthly or more. (Note: Many students can witness the same incident while fewer actually are the target of hurtful behavior.)
- 68% of students witnessed exclusionary behavior monthly or more. 18% reported being excluded monthly or more.
- 9% reported experiencing physical bullying monthly or more.
- 3% (71 students in grades 6-12) reported being physically bullied every day.
- 28% witness violence directed at another student monthly or more.
- Hurtful behaviors at school occur most commonly in the hallways (79%) and cafeteria (67%).
- 57% of students said school staff are usually or always available to deal with bullying.

(Source: 2005 ICSD Student Life and Culture Survey)



4.4 Tompkins County Youth Arrests and Jail Admissions

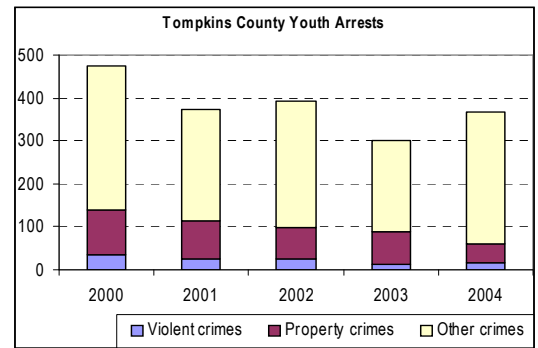
Arrests of Youth < Age 18 by type of Crime

	Violent crimes	Property crimes	Other crimes	All crimes
2000	36	103	336	475
2001	24	89	262	375
2002	25	72	294	391
2003	13	77	211	301
2004	15	46	305	366

Rate per 1,000 population in 2000:

Tompkins – 25.96 NYS excl. NYC – 22.42

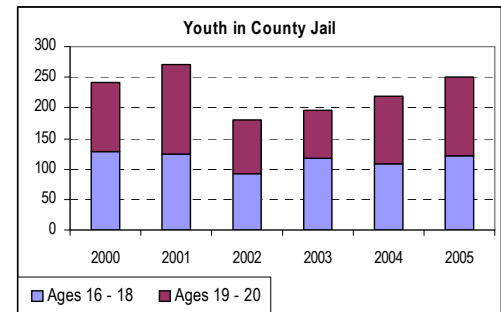
(Source: NYS Division of Criminal Justice Services)



Youth Admitted to Tompkins County Jail

	Males age 16-18	Females age 16-18	Males age 19-20	Females age 19-20	Total
2000	119	9	100	13	241
2001	108	17	131	14	270
2002	79	13	78	10	180
2003	96	22	62	17	197
2004	96	12	99	12	219
2005	106	15	116	14	251

(Source: Tompkins County Jail)



4.5 Detention

Number of Youth Placed in Detention

2003	52
2004	51
2005	56

Length of Stay in Detention (in days)

	Average length of stay	Total # of days
2003	18.75	975
2004	12.09	617
2005	11.9	652

(Source: Tompkins County Dept. of Social Services)

The number of youth placed in detention remained relatively constant between 2003 and 2005. Changes in state law limiting access to detention and local diversion efforts produced a 37% decrease in the total number of days in detention and the average length of stay in detention for youth from 2003 to 2004. Both remained comparatively low in 2005.

4.6 Racial Distribution of Youth in DSS and Juvenile Justice Programs in 2005

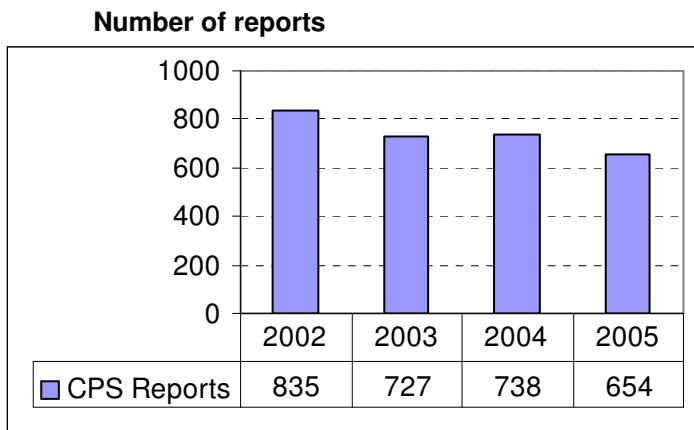
	Caucasian	African-American	Asian	Native American	Other
2000 Census (< age 18)	85.5%	3.6%	7.2%	0%	1.1%
Preventive Services	78.1%	19.3%	1.1%	0%	1.1%
Foster Care	61.1%	34.4%	0%	1.1%	0%
PINS	84%	8%	1%	0%	7%
JD	76%	23%	0%	1%	0%
Detention - PINS	81%	19%	0%	0%	0%
Detention -JD	63%	32%	0%	5%	0%

African-American youth are overrepresented in all programs in comparison to Census data.

(Sources: U.S. Census, Tompkins County Dept. of Social Services, Tompkins County Probation Dept., MAPS)

5. Family

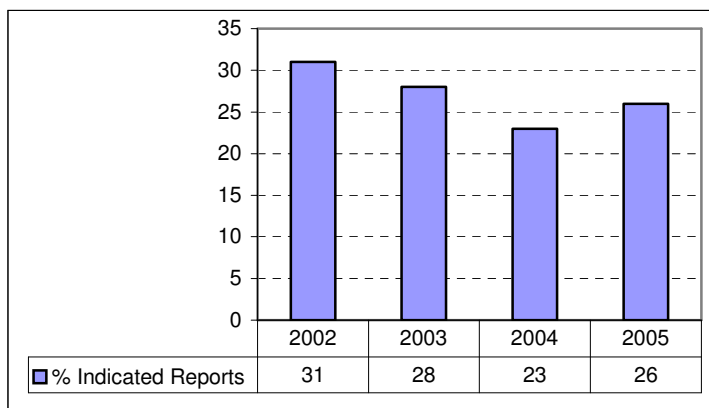
5.1 CPS Reports



The number of child protective hotline calls has shown a downward trend between 2002 and 2005.

(Source: Tompkins County Dept. of Social Services, OCFS Data Warehouse, MAPS)

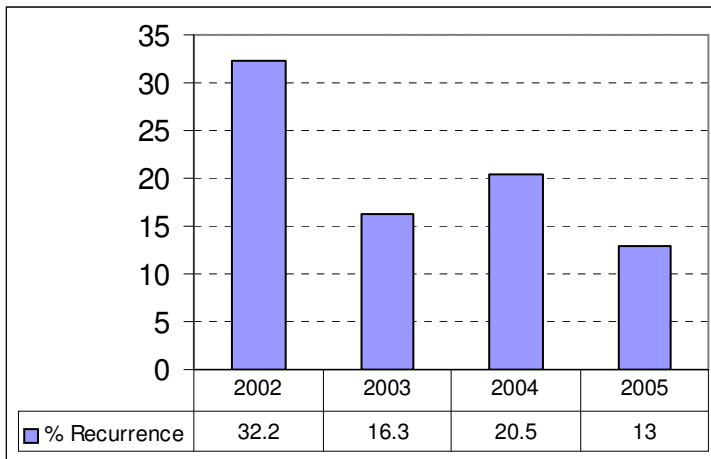
Percent of CPS Reports that are Indicated



During the past five years, the number of indicated calls has declined from a high of 31% in 2000 to 23% in 2004 with a slight increase again in 2005 (26%).

(Source: Tompkins County Dept. of Social Services, OCFS Data Warehouse, MAPS)

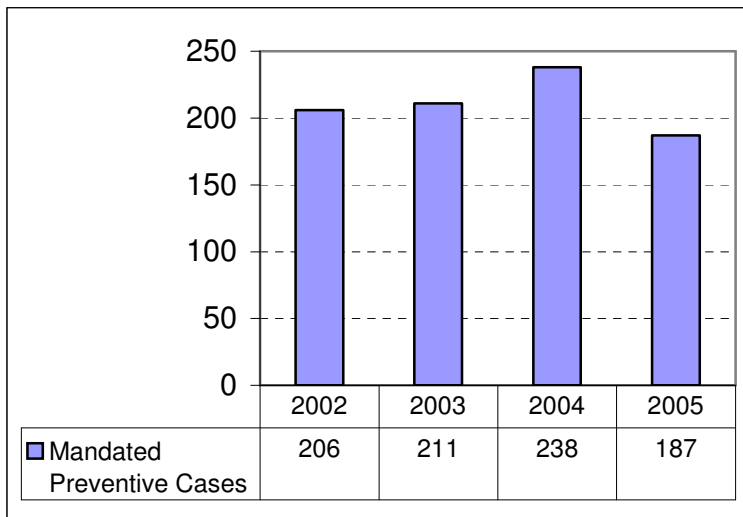
Percent Recurrence of Indicated Reports



The percent of recurrence of indicated reports has decreased dramatically from 32.2% in 2002 to 13% in 2005. The recurrence rate is measured by children with a substantiated allegation within the first six months of the year. An instance of recurrence occurs if the child has another substantiated allegation in an indicated report and the second report is within six months of the first report.

(Source: Tompkins County Dept. of Social Services, OCFS Data Warehouse, MAPS)

5.2 Mandated Preventive Cases (as of 12/31 of year shown)

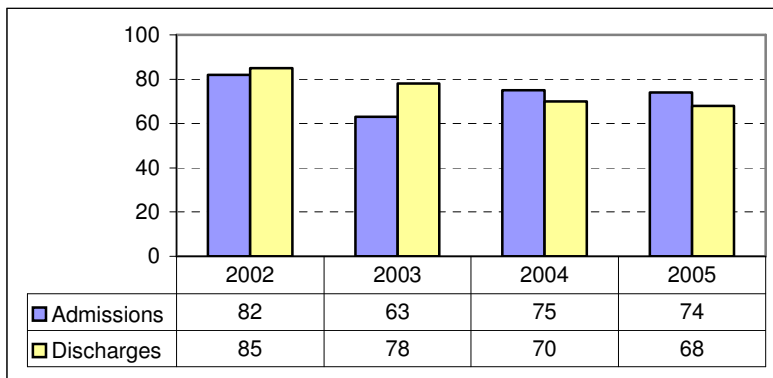


The number of children receiving preventive services increased from 2002 to 2004 and then decreased in 2005.

(Source: MAPS)

5.3 Foster Care

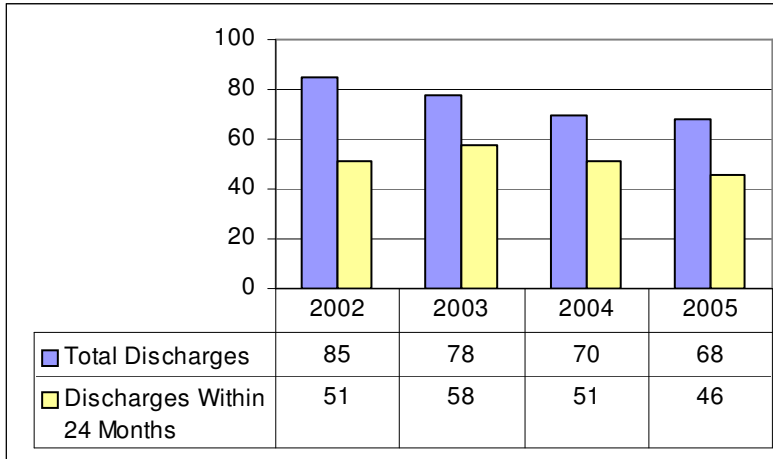
Admissions and Discharges from Foster Care



Between 2002 and 2005 there has been an overall decrease in both foster admissions (10%) and discharges (20%).

(Source: OCFS Data Warehouse)

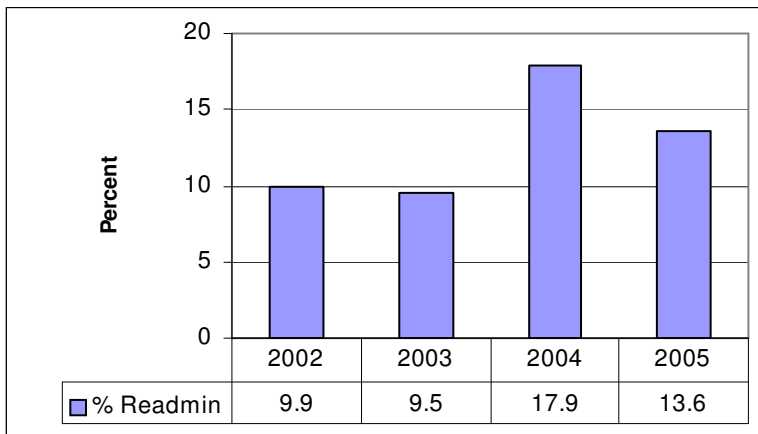
Foster care - total discharges and discharges within 24 months



From 2002 to 2005 the majority of discharges from foster care occurred within 24 months, ranging from 60% in 2002 to 74% in 2004.

(Source: OCFS Data Warehouse)

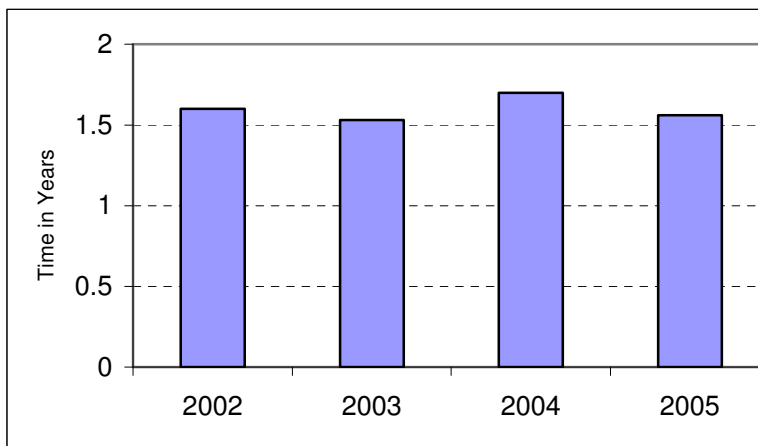
Reentry to Foster Care Within One Year of Discharge



In 2004, there was an increase in the percent of readmissions to foster care within a year, followed by a decrease in 2005.

(Source: OCFS Data Warehouse)

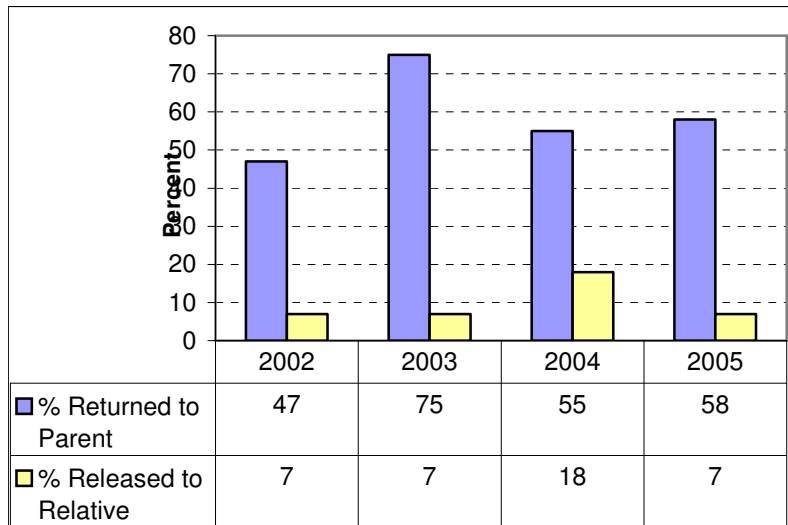
Average Time in Foster Care (in years)



The amount of time children who were in Foster Care on the last day of the year spent in care has remained relatively constant, varying between approximately 1.53 years (2003) to 1.7 years (2004)

(Source: OCFS Data Warehouse)

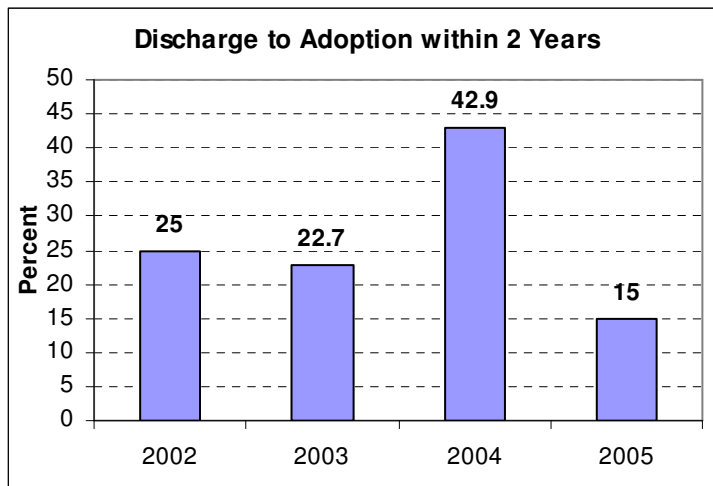
Reunification with Family



In 2003, there was a large increase in the percentage of discharges to parents followed by a decrease in 2004. However, in 2004 there was an increase in the % of children released to relatives.

(Source: OCFS Data Warehouse)

5.4 Adoption



In 2004, there was a large increase to 42.9% discharges to adoption within two years followed by a large decrease to 15% in 2005. Still, the overall percent remains well above statewide average (7.7% in 2005).

(Source: OCFS Data Warehouse)

5.5 Child Care

Capacity

	2002	2003	2004	2005
Birth to Five				
Day Care Centers	497	542	542	729
Family Child Care	320	345	456	454
Group Family	270	290	324	298
TOTAL	1087	1177	1322	1481
School Aged Care				
SACC Programs	1251	1362	1362	1531
FCC/GFCC	182	194	194	196
TOTAL	1433	1556	1556	1727

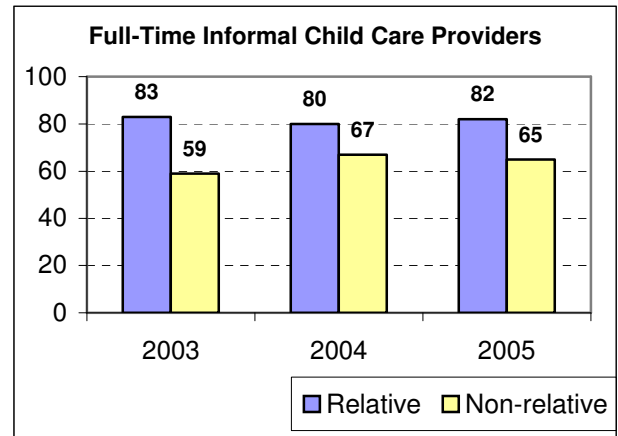
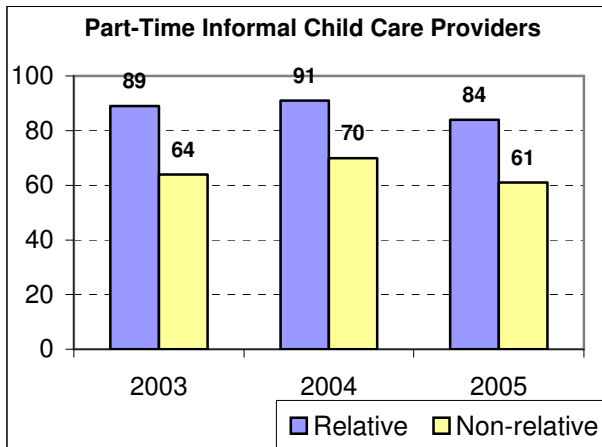
Child Care Supply* Compared to Potential Demand in 2005

	Under 5.5 years (Preschool)	5.5-10 years (Elementary)	11-13 years (Middle School)
Number of Children (2000 Census)	4776	5611	3141
Labor Force Participation Rate (Tompkins County)	64%	69%	69%
Potential Demand for Care	3057	3872	2167
Supply of Regulated Care (DCC/FCC/GFCC)	1828	1271	260
Gap Between Potential Demand and Supply of Regulated Care	[1229]	[2601]	[1907]

Parents cannot work unless they have care for their young children when and where they need it. (Annie E. Casey Foundation). Data show that there are not enough child care slots in Tompkins County.

*Supply numbers include part-time (144 Head Start spaces and 203 preK spaces), but do NOT include private schools (103 preschool spaces), nursery schools (262 spaces) and other informal arrangements. (Source: Day Care and Child Development Council, WMS, U.S. Census)

Informal care



(Source: WMS special query)

5.6 Independent Living and Transitions

Adolescents served in programs funded by County Youth Services

	American Red Cross Shelter	Learning Web Youth Outreach	Teen Pregnancy/ Parenting Program
2003	77	159	150
2004	85	206	132
2005	86	132	127

(Source: Program reports to Tompkins Youth Services Dept.)

There is a need for shelter for area young people (16+) with nowhere to stay. In addition supports are needed for young people transitioning to independent living.

Estimated number of students transitioning into a new school in 2004-05

District	Number	Percent
Dryden	540	29%
Groton	256	23%
Ithaca	1,411	26%
Lansing	307	23%
Newfield	241	25%
Trumansburg	329	24%
Tompkins	3,084	25%

(Source: TST BOCES)

Each year, a large number of students transition into a new school. Roughly ¼ of all high school students and ⅓ of all middle school students enter a new school each year.

6. Community

6.1 Youth Participation in Selected Healthy Activities

	Rural Youth Services (offered in local communities by Cornell Cooperative Extension)	Recreation Partnership total registrations*
2003	988	3,601
2004	847	5,875
2005	1,046	7,364

*Some youth may participate in more than one program
(Source: Annual Reports)

6.2 Mentoring and Access to Positive, Supportive Adults

Youth served in funded mentoring programs and current unmet need

	IYB One to One Big Brother Big Sister Program		Learning Web Apprenticeships	
	# served	# unable to be served/ on wait list	# served	# unable to be served/ on wait list
2003	224	n/a	314	n/a
2004	265	n/a	292	n/a
2005	231	60	336	119

(Source: Program reports to Tompkins County Youth Services Dept.)

Close to 200 youth are on waiting lists for mentoring services.

ICSD students who have a trusted adult

	2005		2003	
	Middle schoolers	High schoolers	Middle schoolers	High Schoolers
in school	56%	48%	52%	51%
out of school	83%	80%	82%	80%

(Source: 2005 ICSD Student Life and Culture Survey)

Fewer students have trusted adults in school than in the community.

6.3 Transportation

Transportation Availability

11.4% of Tompkins County households (both owner- and renter-occupied) do not have a vehicle available.
(Source: U.S. Census)

Impact of lack of transportation on high school students

40% of the 925 Tompkins County high school students who answered a voluntary transportation survey in 2006 reported that they did not participate in positive activities because of a lack of transportation. Most commonly listed activities they were unable to participate in:

- Jobs
- Lessons (music, karate, etc)
- Youth group
- School sports
- Volunteering
- School clubs
- Social activities

Student comments on what would improve their access to transportation:

- Lower cost/ youth bus pass
- More convenient bus schedules
- More direct bus routes
- Dedicated bike lanes
- Increased bus service on weekends and evenings
- Bus stops closer to home and/or destination
- Bike racks & phone booths at bus stops
- Orientation for new bus riders (how to read schedule, ride bus)

(Source: 2006 Tompkins County Youth Services Dept. Youth Transportation Survey)

Passenger trips (public transportation)

		2005	2004	2003
TCAT total	Fixed route bus	3,090,960	2,738,998	2,769,426
TCAT youth*	Fixed route bus		50,940	56,309
TCAT – Seniors & persons w/ disabilities	Fixed route bus		56,688	58,952
Gadabout – Seniors & persons w/ disabilities	Paratransit	61,139	57,560	58,455

*A federal grant administered by Tompkins County Youth Services Dept. provided bus passes to targeted ICSD students during years shown.)

(Source: TCAT)

Data Sources:

U.S. Census, www.census.gov

New York State Education Dept. School Report Cards, www.nysed.gov

Tompkins County Youth Services Dept., www.tompkins-co.org/youth, 274-5310

Tompkins County Dept. of Social Services, 274-5678

Ithaca College Index of Economic Activity, www.ithaca.edu/hs/economics/tcdex.htm

New York State Dept. of Labor, www.labor.state.ny.us

Tompkins County Health Dept., www.tompkins-co.org/health

New York State Touchstones, www.ccf.state.ny.us/resources/touchstonesresource.htm

New York State Dept. of Health, www.health.state.ny.us/nysdoh/vital_statistics/index.htm

ICSD Student Life and Culture Survey, www.healthyouth.org/publications.php

Tompkins-Seneca-Tioga BOCES, www.tstboces.org, 257-1551

New York State Office of Children and Family Services, www.ocfs.state.ny.us

Tompkins County Probation Department, 274-5380

Citizens Concerned for Children (Law Guardian Office), 277-3198

Tompkins County Attorney, www.tompkins-co.org/ctyattorney/

New York State Division of Criminal Justice Services, www.criminaljustice.state.ny.us/index.htm

Tompkins County Jail, www.tompkins-co.org/sheriff/, 257-1345

Monitoring and Analysis Profiles (MAPS), available to local DSS

OCFS Data Warehouse, available to local DSS

Day Care and Child Development Council, www.daycarecouncil.org, 273-0259

Welfare Management System (WMS), available to local DSS

Tompkins Consolidated Area Transit (TCAT), www.tcatbus.com