

TOMPKINS COUNTY

AGRICULTURE & FARMLAND PROTECTION BOARD

615 Willow Avenue Ithaca, New York 14850
Telephone (607) 272-2292 Fax (607) 272-7088

Tompkins County Agricultural District #1 – 2019-20 Review Towns of Lansing, Groton, Dryden, Caroline, and parts of Ithaca and Danby Tompkins County Agriculture and Farmland Protection Board Recommendations for Modification and Renewal of Agriculture District #1

Acting on behalf of the Tompkins County Agriculture and Farmland Protection Board (AFPB), Cornell Cooperative Extension of Tompkins County (CCETC) has been conducting the 300-day review of Agricultural District #1, required every 8 years by New York State Agricultural District Law. The AFPB has reviewed maps of the land in each town in the District, and CCETC staff consulted the Town Planning Boards, Town Boards, and Agriculture Committees in District #1 to get input on parcels to be removed or added to the District.

AFPB is recommending the addition of 369.58 acres to the Ag District #1 located in:

	Acres
Groton	308.45
Lansing	61.15

And further, the AFPB is recommending removal of 1739.05 acres from the Ag District #1 in:

	Acres
Caroline	37.70
Danby	303.26
Dryden Vil.	19.75
Freeville	12.18
Dryden	918.15
Ithaca	33.88
Lansing Vil.	15.97
Lansing	398.16

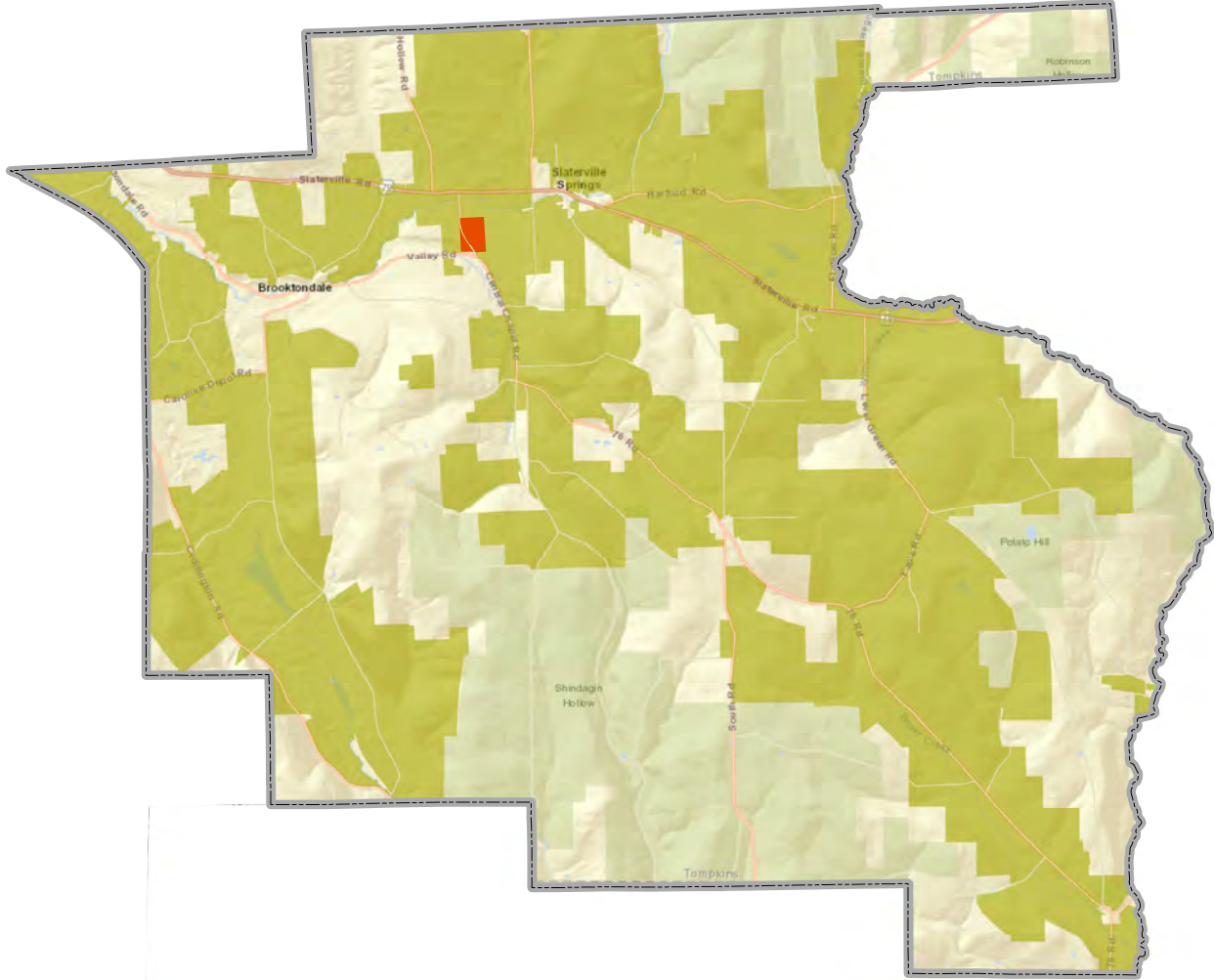
In the 8 years since the last review of Ag District #1, agricultural activity in the district appears to be steady if not increasing. Many full-time farmers have expanded their operations by buying land from retiring farmers and landowners, or renting land from nearby landowners. This has maintained the agricultural nature of the towns in particular in the northern towns of Lansing, Groton, and Dryden. The southern towns of Caroline, Danby and Ithaca, while lacking large commercial farms, are seeking to preserve open space and small scale farming.






For this review, we have taken a more comprehensive approach taking into account where development is occurring or may occur based on town goals, and in areas where agriculture is less active, we have suggested removal of parcels that are not surrounded by farmland or clearly not likely to be intensely farmed in the future.

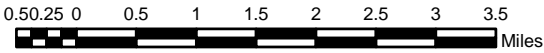
As a result, **the AFPB recommends the above changes/modification to Agriculture District #1 and continuation of the district as modified.** Viable agricultural land exceeds the 50% required by NYS to certify the District, so the District meets the criteria to stay as it is.

Agricultural District Review 2019

TOWN OF CAROLINE



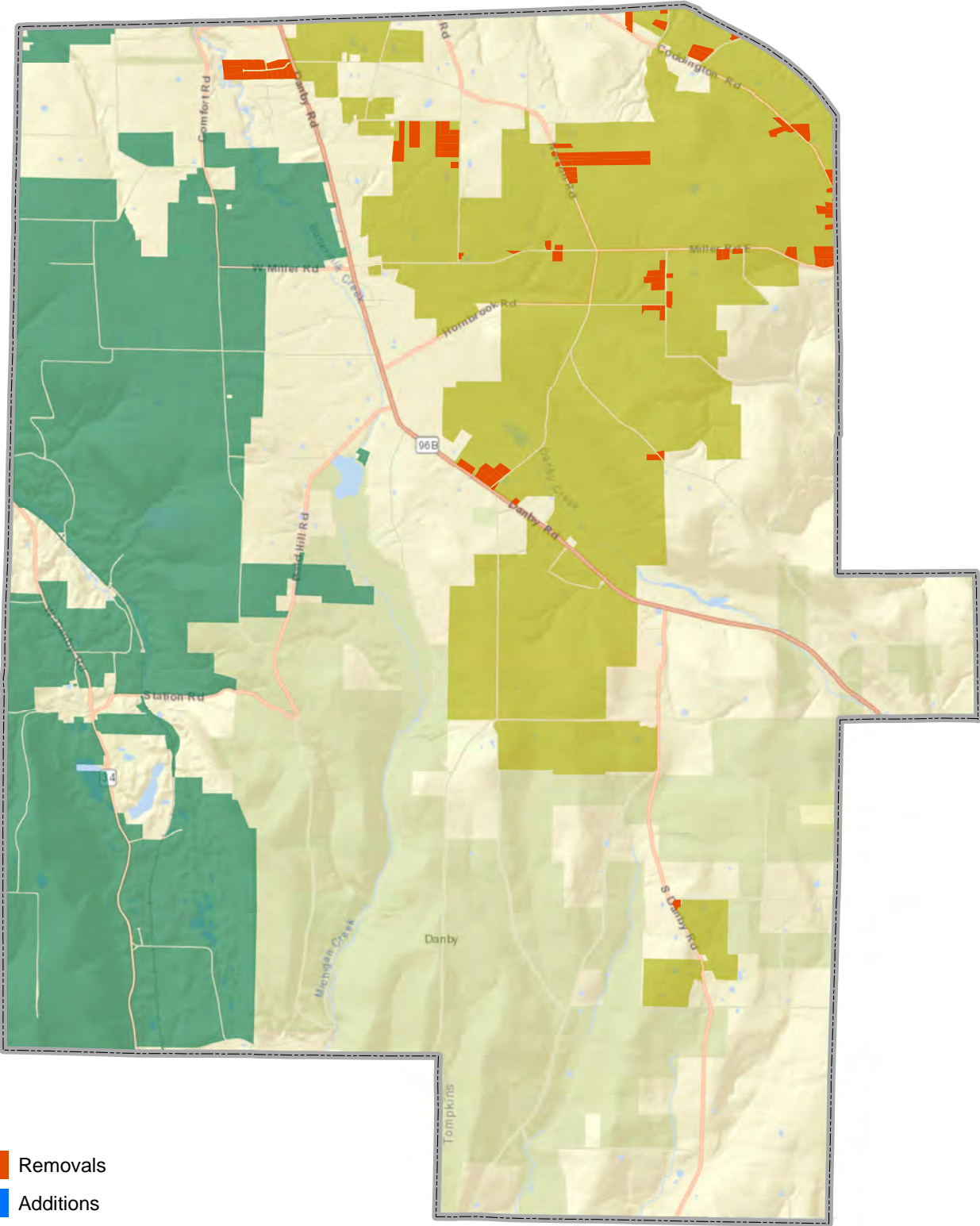
-  Removals
-  Additions
-  Agricultural District 1
-  Agricultural District 2
-  Municipal Boundaries








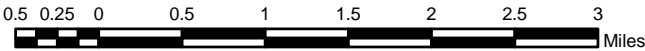
Sources: Esri, HERE, Garmin, USGS, Intermap, INCREMENT P, NRCan, Esri Japan, METI, Esri China (Hong Kong), Esri Korea, Esri (Thailand), NGCC, (c) OpenStreetMap contributors, and the GIS User Community

Agricultural District Review 2019

TOWN OF DANBY



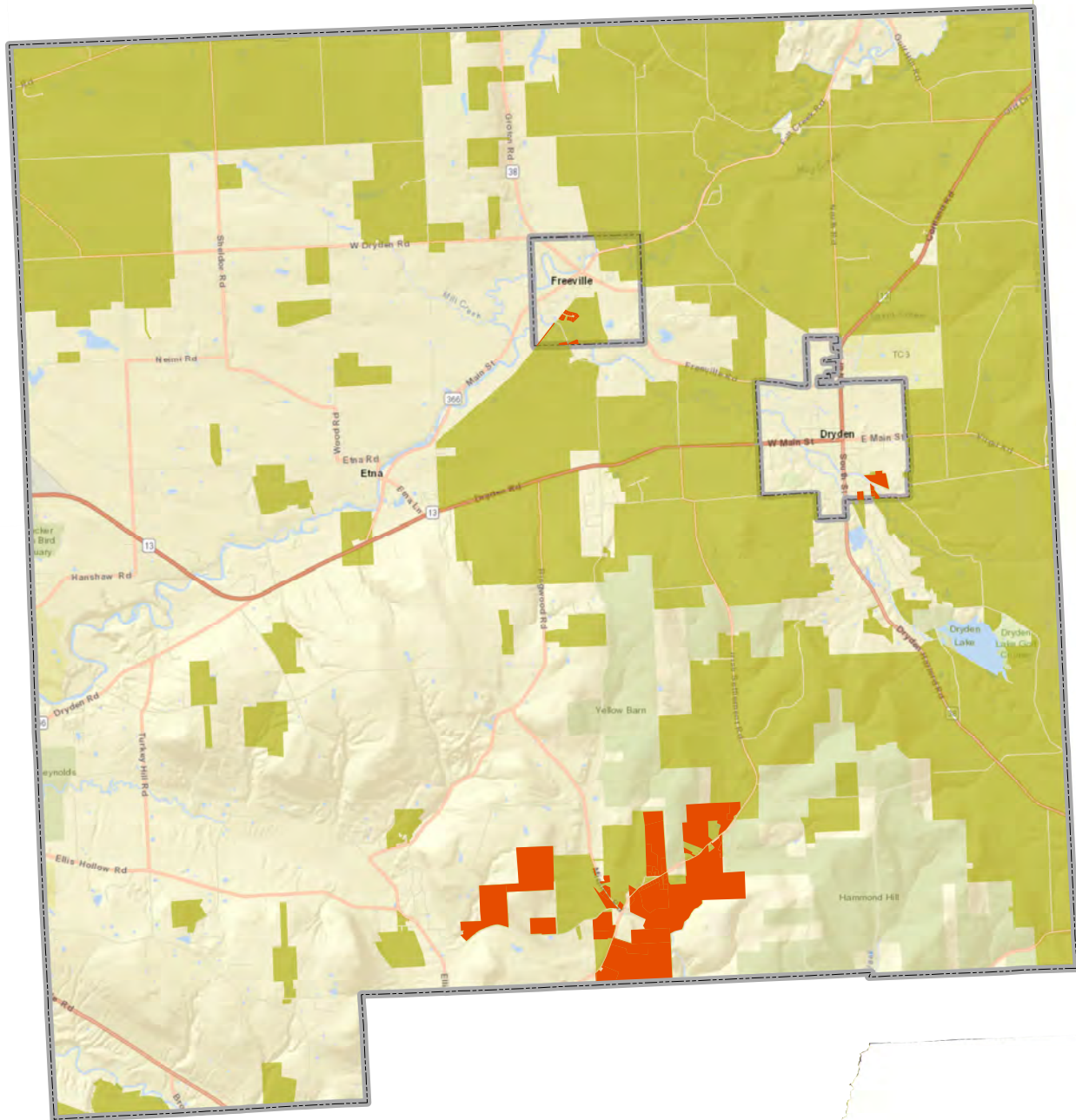
-  Removals
-  Additions
-  Agricultural District 1
-  Agricultural District 2
-  Municipal Boundaries



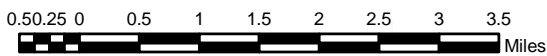
Sources: Esri, HERE, Garmin, USGS, Intermap, INCREMENT P, NRCan, Esri Japan, METI, Esri China (Hong Kong), Esri Korea, Esri (Thailand), NGCC, (c) OpenStreetMap contributors, and the GIS User Community

Agricultural District Review 2019

TOWN OF DRYDEN



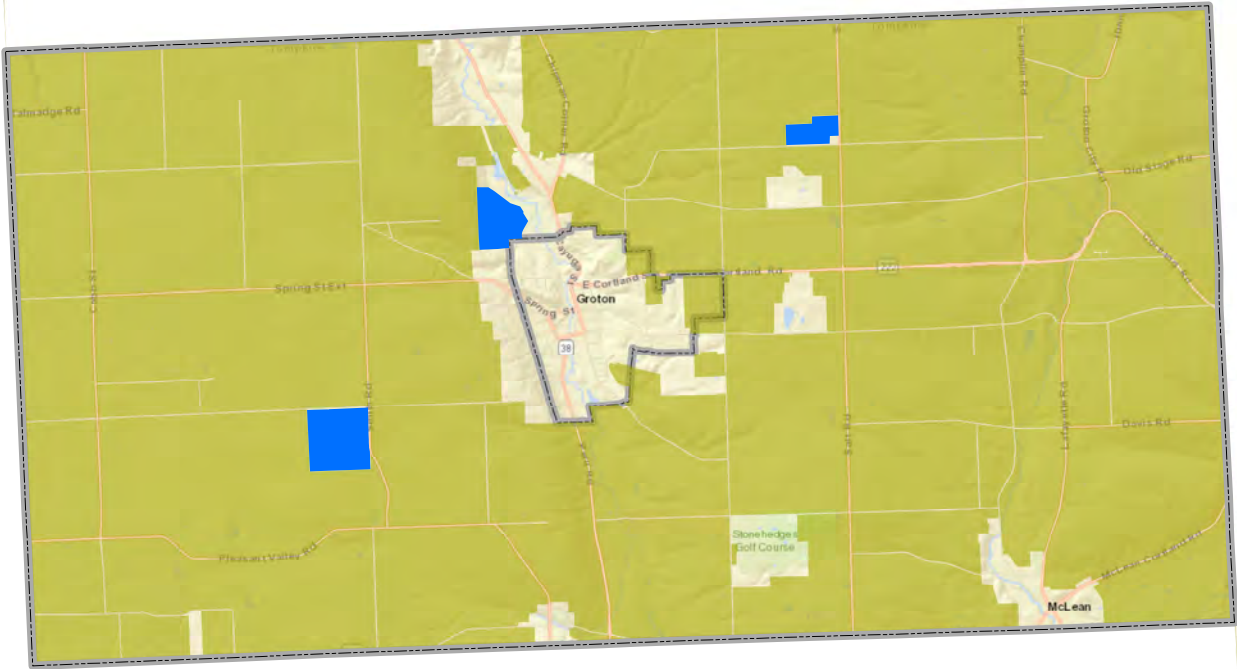
- Removals
- Additions
- Agricultural District 1
- Agricultural District 2
- Municipal Boundaries








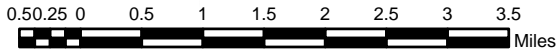
Sources: Esri, HERE, Garmin, USGS, Intermap, INCREMENT P, NRCan, Esri Japan, METI, Esri China (Hong Kong), Esri Korea, Esri (Thailand), NGCC, (c) OpenStreetMap contributors, and the GIS User Community

Agricultural District Review 2019

TOWN OF GROTON



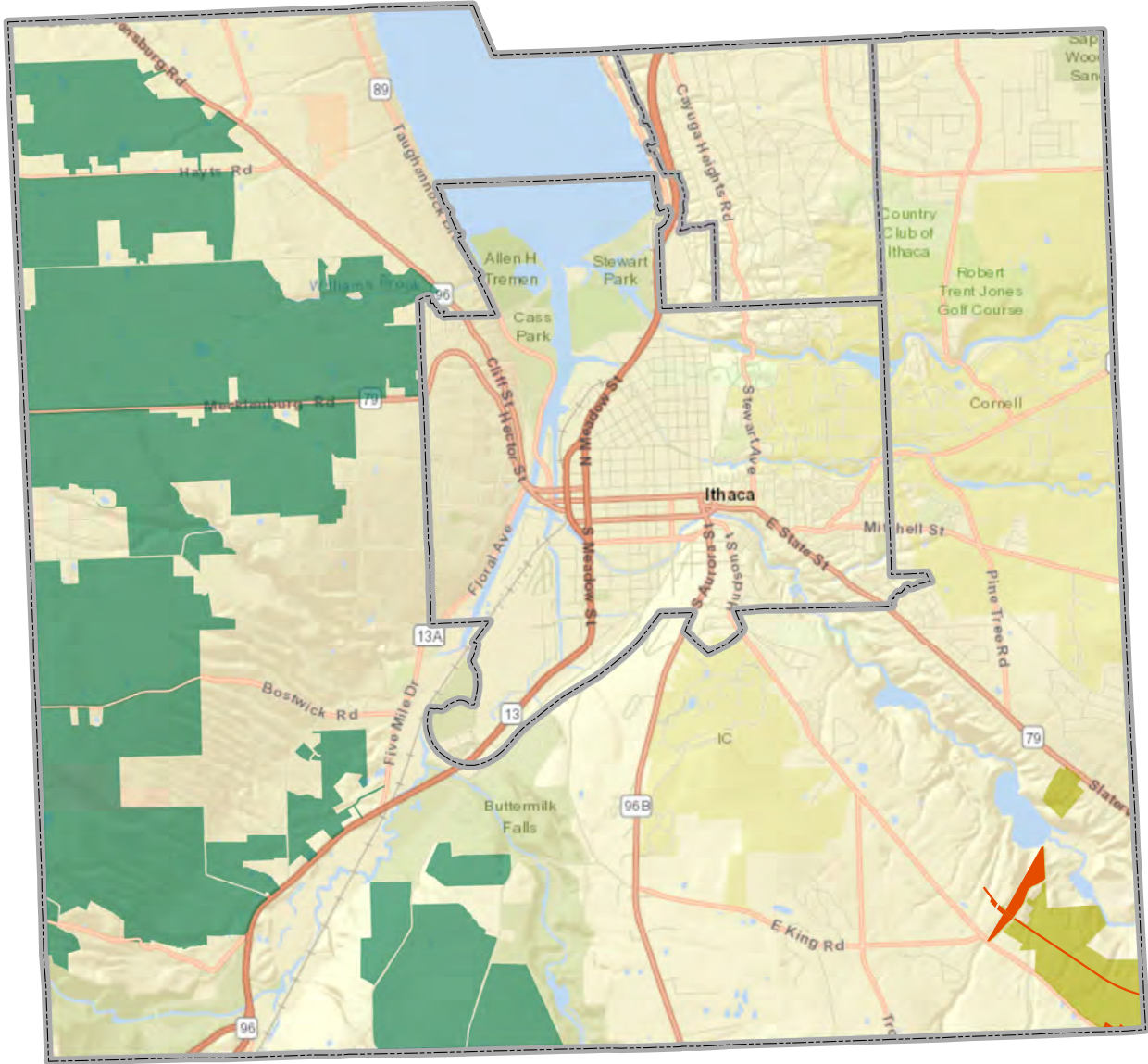
-  Removals
-  Additions
-  Agricultural District 1
-  Agricultural District 2
-  Municipal Boundaries








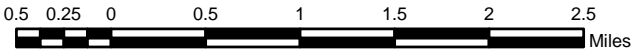
Sources: Esri, HERE, Garmin, USGS, Intermap, INCREMENT P, NRCan, Esri Japan, METI, Esri China (Hong Kong), Esri Korea, Esri (Thailand), NGCC, (c) OpenStreetMap contributors, and the GIS User Community

Agricultural District Review 2019

TOWN OF ITHACA



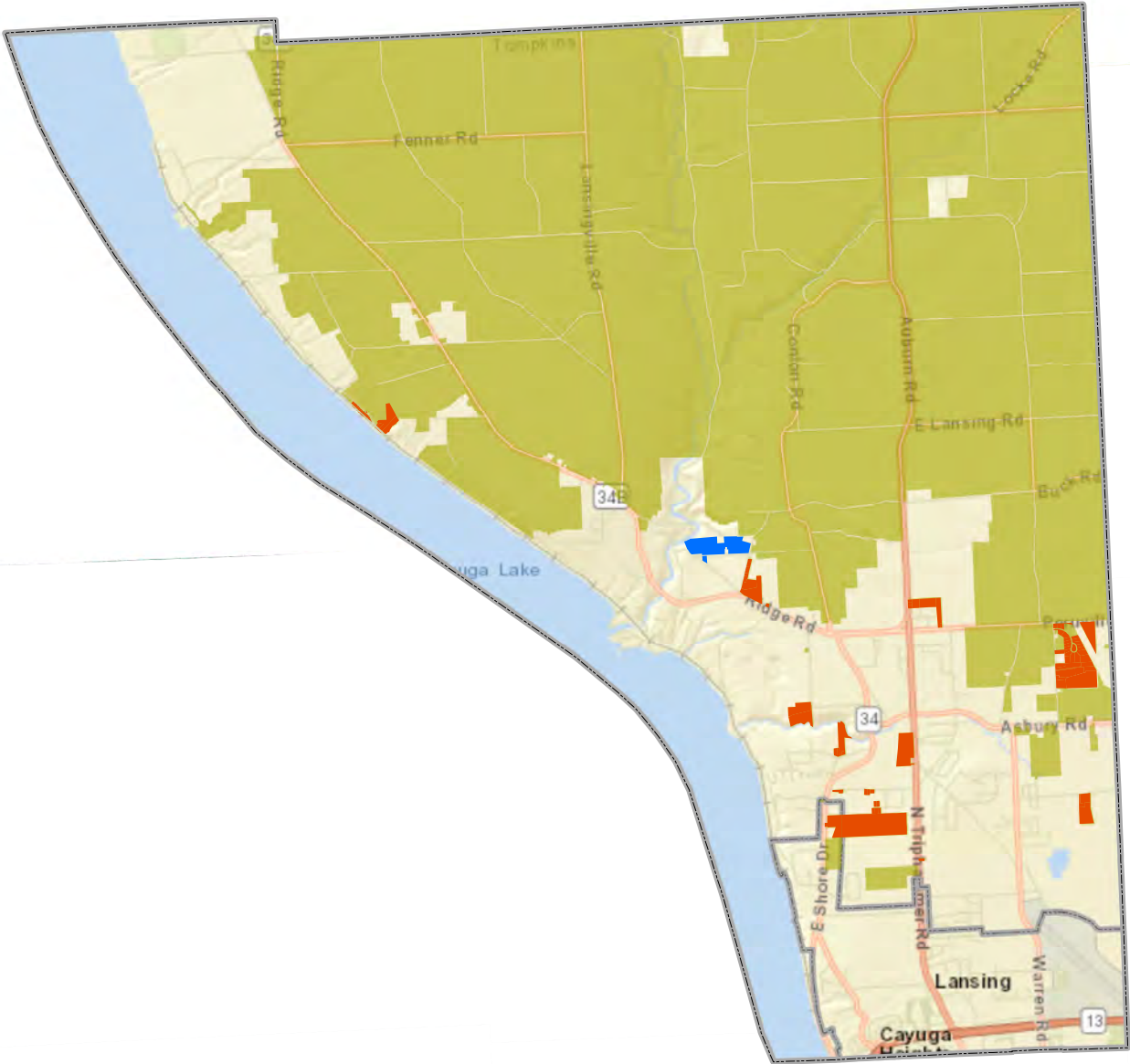
-  Removals
-  Additions
-  Agricultural District 1
-  Agricultural District 2
-  Municipal Boundaries








Sources: Esri, HERE, Garmin, USGS, Intermap, INCREMENT P, NRCan, Esri Japan, METI, Esri China (Hong Kong), Esri Korea, Esri (Thailand), NGCC, (c) OpenStreetMap contributors, and the GIS User Community

Agricultural District Review 2019

TOWN OF LANSING



-  Removals
-  Additions
-  Agricultural District 1
-  Agricultural District 2
-  Municipal Boundaries



2020 Update of Tompkins County Agricultural District #1

Parcels to add to Agricultural District #1

SWISPRINTK	Acres	Municipality
502889-32.-1-6	160.95	Town of Groton
502889-221.-2-17	96.2	Town of Groton
502889-17.-1-23.2	51.3	Town of Groton
Total Acres Added in Groton	308.45	
503289-32.-1-22.1	61.13	Town of Lansing
Total Acres Added	369.58	

Parcels to be removed from Agricultural District #2

SWISPRINTK	Acres	Municipality
502000-8.-1-5.2	37.70	Caroline
502200-11.-1-6.101	2.99	Danby
502200-11.-1-6.103	2.40	Danby
502200-11.-1-6.104	1.35	Danby
502200-11.-1-6.106	1.22	Danby
502200-11.-1-6.107	1.19	Danby
502200-11.-1-6.113	4.50	Danby
502200-11.-1-6.116	4.03	Danby
502200-11.-1-6.711	2.43	Danby
502200-11.-1-6.712	2.13	Danby
502200-12.-1-2	0.84	Danby
502200-12.-1-23.1	2.70	Danby
502200-12.-1-23.6	1.40	Danby
502200-12.-1-4	3.04	Danby
502200-12.-1-5.1	0.60	Danby
502200-12.-1-5.3	0.81	Danby
502200-12.-1-5.4	1.69	Danby
502200-12.-1-5.8	2.92	Danby
502200-14.-1-17	0.73	Danby
502200-14.-1-18.1	1.29	Danby
502200-2.-1-9.10	5.32	Danby
502200-2.-1-9.11	5.46	Danby
502200-2.-1-9.12	4.21	Danby

502200-2.-1-9.15	1.85	Danby
502200-2.-1-9.16	1.24	Danby
502200-2.-1-9.17	1.66	Danby
502200-2.-1-9.18	1.64	Danby
502200-2.-1-9.19	1.77	Danby
502200-2.-1-9.20	1.88	Danby
502200-2.-1-9.23	5.68	Danby
502200-2.-1-9.7	1.92	Danby
502200-2.-1-9.8	2.66	Danby
502200-28.-1-20	2.30	Danby
502200-4.-1-10.11	4.96	Danby
502200-4.-1-10.12	0.93	Danby
502200-4.-1-11.11	1.04	Danby
502200-4.-1-11.21	2.59	Danby
502200-4.-1-11.3	1.12	Danby
502200-4.-1-40.10	6.43	Danby
502200-4.-1-40.11	5.74	Danby
502200-4.-1-40.252	3.65	Danby
502200-4.-1-40.3	10.18	Danby
502200-4.-1-40.4	5.20	Danby
502200-4.-1-40.52	5.04	Danby
502200-4.-1-40.82	12.46	Danby
502200-4.-1-40.93	1.98	Danby
502200-4.-1-42.2	1.47	Danby
502200-4.-1-47	0.62	Danby
502200-4.-1-48	0.63	Danby
502200-4.-1-49	2.94	Danby
502200-4.-1-51.1	4.13	Danby
502200-4.-1-51.2	21.12	Danby
502200-4.-1-52.1	1.90	Danby
502200-4.-1-52.2	17.72	Danby
502200-4.-1-53	0.20	Danby
502200-4.-1-54.1	1.40	Danby
502200-4.-1-54.3	1.60	Danby
502200-4.-1-54.4	1.99	Danby
502200-4.-1-55	1.69	Danby
502200-5.-1-1.751	3.07	Danby
502200-5.-1-1.752	3.28	Danby
502200-5.-1-1.753	3.86	Danby
502200-5.-1-11.3	1.23	Danby
502200-5.-1-4.211	2.06	Danby
502200-5.-1-8.4	2.12	Danby
502200-5.-1-9.3	4.91	Danby

502200-5.-1-9.41	0.81	Danby
502200-5.-1-9.421	6.07	Danby
502200-6.-1-11.31	2.12	Danby
502200-6.-1-11.4	1.51	Danby
502200-6.-1-21.1	1.12	Danby
502200-6.-1-21.211	4.03	Danby
502200-6.-1-21.212	4.89	Danby
502200-6.-1-21.217	2.06	Danby
502200-6.-1-22.11	2.70	Danby
502200-6.-1-22.12	2.42	Danby
502200-6.-1-22.3	1.82	Danby
502200-6.-1-25.2	2.02	Danby
502200-6.-1-25.3	2.27	Danby
502200-6.-1-26.21	5.14	Danby
502200-6.-1-26.22	5.60	Danby
502200-6.-1-26.232	1.99	Danby
502200-6.-1-26.233	2.01	Danby
502200-6.-1-26.234	1.97	Danby
502200-6.-1-31.1	3.83	Danby
502200-6.-1-4.21	1.18	Danby
502200-6.-1-4.22	3.00	Danby
502200-6.-1-5	2.20	Danby
502200-6.-1-7	0.40	Danby
502200-6.-1-8.1	2.20	Danby
502200-6.-1-9.1	4.86	Danby
502200-7.-1-39.2	0.94	Danby
502200-7.-1-40.31	2.00	Danby
502200-7.-1-41	0.76	Danby
502200-7.-1-42	0.78	Danby
502200-7.-1-43.3	2.34	Danby
502200-7.-1-43.5	0.92	Danby
502200-7.-1-43.7	1.39	Danby
502200-2.-1-9.13	1.31	Danby
502200-2.-1-9.14	0.81	Danby
502200-2.-1-9.21	2.07	Danby
502200-2.-1-9.22	3.61	Danby
502200-2.-1-9.6	1.83	Danby
502200-2.-1-9.9	1.21	Danby
Total Acres Removed in Danby	303.26	
502401-17.-1-1	12.89	Village Dryden
502401-17.-3-2.1	1.48	Village Dryden

502401-17.-3-2.2	0.72	Village Dryden
502401-17.-3-4	0.24	Village Dryden
502401-17.-3-5	0.26	Village Dryden
502401-17.-3-6	1.05	Village Dryden
502401-18.-3-2.1	1.71	Village Dryden
502401-18.-3-2.2	1.40	Village Dryden
Total Acres Removed in Village of Dryden	19.75	
502403-6.-1-2	1.83	Freeville
502403-6.-1-3.1	1.22	Freeville
502403-6.-1-3.3	1.80	Freeville
502403-6.-2-10	0.49	Freeville
502403-6.-2-11	0.54	Freeville
502403-6.-2-12	0.63	Freeville
502403-6.-2-13	0.59	Freeville
502403-6.-2-14	0.83	Freeville
502403-6.-2-15	0.54	Freeville
502403-6.-2-16	0.54	Freeville
502403-6.-2-17	0.50	Freeville
502403-6.-2-18	0.51	Freeville
502403-6.-2-19	0.51	Freeville
502403-6.-2-7	0.87	Freeville
502403-6.-2-8	0.79	Freeville
Total Acres Removed in Village of Freeville	12.18	
502489-63.-1-16.1	9.49	Dryden
502489-63.-1-18.1	86.70	Dryden
502489-63.-1-2	13.06	Dryden
502489-63.-1-20.1	1.88	Dryden
502489-63.-1-20.2	12.67	Dryden
502489-63.-1-20.3	2.43	Dryden
502489-63.-1-21	37.04	Dryden
502489-63.-1-22	3.66	Dryden
502489-63.-1-23.2	0.46	Dryden
502489-63.-1-23.4	0.33	Dryden
502489-63.-1-24.2	2.23	Dryden
502489-64.-1-24.21	98.77	Dryden
502489-64.-1-24.23	7.66	Dryden
502489-64.-1-24.4	1.08	Dryden
502489-64.-1-24.5	1.25	Dryden
502489-64.-1-25	0.56	Dryden
502489-64.-1-28.1	1.43	Dryden
502489-64.-1-28.21	1.49	Dryden

502489-64.-1-28.23	2.91	Dryden
502489-64.-1-33	1.62	Dryden
502489-76.-1-11.31	82.73	Dryden
502489-76.-1-22.1	19.72	Dryden
502489-76.-1-24.111	33.53	Dryden
502489-76.-1-24.114	18.03	Dryden
502489-76.-1-24.116	127.95	Dryden
502489-76.-1-24.141	0.71	Dryden
502489-76.-1-24.142	18.52	Dryden
502489-76.-1-24.16	9.38	Dryden
502489-76.-1-49	24.00	Dryden
502489-77.-1-1	0.71	Dryden
502489-77.-1-2.1	0.72	Dryden
502489-77.-1-2.2	1.33	Dryden
502489-77.-1-31	3.00	Dryden
502489-77.-1-5.10	0.71	Dryden
502489-77.-1-5.11	0.79	Dryden
502489-77.-1-5.12	1.66	Dryden
502489-77.-1-5.13	1.41	Dryden
502489-77.-1-5.14	1.49	Dryden
502489-77.-1-5.15	1.42	Dryden
502489-77.-1-5.21	35.66	Dryden
502489-77.-1-5.23	1.80	Dryden
502489-77.-1-5.24	239.95	Dryden
502489-77.-1-5.3	0.80	Dryden
502489-77.-1-5.41	0.36	Dryden
502489-77.-1-5.42	1.46	Dryden
502489-77.-1-5.5	0.76	Dryden
502489-77.-1-5.6	0.72	Dryden
502489-77.-1-5.7	0.69	Dryden
502489-77.-1-5.8	0.71	Dryden
502489-77.-1-5.9	0.71	Dryden
Total Acres Removed in Town of Dryden	918.15	
503089-47.-2-6.31	1.37	Ithaca
503089-47.-2-6.53	0.22	Ithaca
503089-47.-2-6.54	0.61	Ithaca
503089-47.-2-7	4.65	Ithaca
503089-48.-1-13.21	2.27	Ithaca
503089-48.-1-13.22	2.75	Ithaca
503089-48.-1-14.1	4.19	Ithaca
503089-48.-1-14.4	17.82	Ithaca
Total Acres Removed in Town of Ithaca	33.88	

503201-42.1-1-21	15.97	Village Lansing
503289-24.-2-10	0.34	Lansing
503289-24.-2-11	0.32	Lansing
503289-24.-2-13	0.50	Lansing
503289-24.-2-14	0.32	Lansing
503289-24.-2-15.2	0.51	Lansing
503289-24.-2-16	0.26	Lansing
503289-24.-2-17	0.20	Lansing
503289-24.-2-18	0.05	Lansing
503289-24.-2-6	0.36	Lansing
503289-24.-2-7.2	0.78	Lansing
503289-24.-2-8	0.32	Lansing
503289-24.-2-9	0.31	Lansing
503289-24.-5-1.1	1.14	Lansing
503289-24.-5-1.2	12.47	Lansing
503289-24.-5-3	6.03	Lansing
503289-30.-1-12	0.79	Lansing
503289-30.-1-13	0.74	Lansing
503289-30.-1-14	0.75	Lansing
503289-30.-1-16.31	4.06	Lansing
503289-30.-1-16.32	9.07	Lansing
503289-30.-1-22	0.50	Lansing
503289-30.-1-23	7.72	Lansing
503289-31.-1-1.11	0.91	Lansing
503289-31.-1-1.12	0.58	Lansing
503289-31.-1-1.31	0.69	Lansing
503289-31.-1-1.32	0.73	Lansing
503289-31.-1-1.41	0.68	Lansing
503289-31.-1-1.42	1.29	Lansing
503289-31.-1-2.1	7.44	Lansing
503289-31.-1-2.2	0.63	Lansing
503289-31.-1-3	16.88	Lansing
503289-31.-1-4	0.70	Lansing
503289-36.-1-11.42	12.94	Lansing
503289-36.-1-11.5	16.30	Lansing
503289-37.1-6-3.361	0.25	Lansing
503289-37.1-6-3.362	30.92	Lansing
503289-37.1-7-19	0.87	Lansing
503289-37.1-7-20	13.49	Lansing
503289-37.1-7-21.23	1.14	Lansing

503289-37.1-7-22	1.78	Lansing
503289-38.-1-4.121	1.87	Lansing
503289-38.-1-4.123	1.43	Lansing
503289-38.-1-4.124	1.55	Lansing
503289-38.-1-4.125	1.30	Lansing
503289-38.-1-4.126	1.16	Lansing
503289-38.-1-4.127	1.53	Lansing
503289-38.-1-4.128	2.83	Lansing
503289-38.-1-4.129	6.25	Lansing
503289-38.-1-4.130	3.04	Lansing
503289-38.-1-4.131	2.65	Lansing
503289-38.-1-4.132	2.60	Lansing
503289-38.-1-4.133	1.52	Lansing
503289-38.-1-4.134	1.00	Lansing
503289-38.-1-4.135	1.21	Lansing
503289-38.-1-4.136	1.32	Lansing
503289-38.-1-4.137	1.32	Lansing
503289-38.-1-4.138	1.20	Lansing
503289-38.-1-4.139	2.05	Lansing
503289-38.-1-4.140	1.85	Lansing
503289-38.-1-4.144	2.32	Lansing
503289-38.-1-4.145	1.09	Lansing
503289-38.-1-4.15	15.19	Lansing
503289-38.-1-4.16	0.96	Lansing
503289-38.-1-7.10	2.06	Lansing
503289-38.-1-7.152	2.26	Lansing
503289-38.-1-7.153	5.91	Lansing
503289-38.-1-7.154	3.88	Lansing
503289-38.-1-7.155	4.08	Lansing
503289-38.-1-7.156	3.94	Lansing
503289-38.-1-7.16	27.23	Lansing
503289-38.-1-7.8	5.21	Lansing
503289-38.-1-7.92	8.33	Lansing
503289-39.-1-13.21	5.68	Lansing
503289-39.-1-13.22	15.03	Lansing
503289-39.-1-13.23	1.71	Lansing
503289-42.-1-1.121	1.67	Lansing
503289-42.-1-1.123	1.01	Lansing
503289-42.-1-1.124	1.04	Lansing
503289-42.-1-1.125	1.02	Lansing
503289-42.-1-1.126	1.04	Lansing
503289-42.-1-1.127	1.03	Lansing
503289-42.-1-1.128	1.19	Lansing

503289-42.-1-1.131	1.06	Lansing
503289-42.-1-1.35	1.02	Lansing
503289-42.-1-1.21	88.85	Lansing
503289-44.-1-1.27	0.86	Lansing
Total Acres Removed in Town of Lansing	398.16	
Total Acres Removed from Agricultural District #1	1739.05	