

NON-SEASONAL FARMERS' MARKET

FARMERS' MARKET/FLEX COMMUNITY SPACES

HOTEL

RESIDENTIAL (3 STORY TOWNHOUSES)

RESIDENTIAL (SPLIT DUPLEXES)

MULTIFAMILY RESIDENTIAL (3 STORY)

COMMERCIAL LOFTS (I.E. RESIDENTIAL ABOVE)

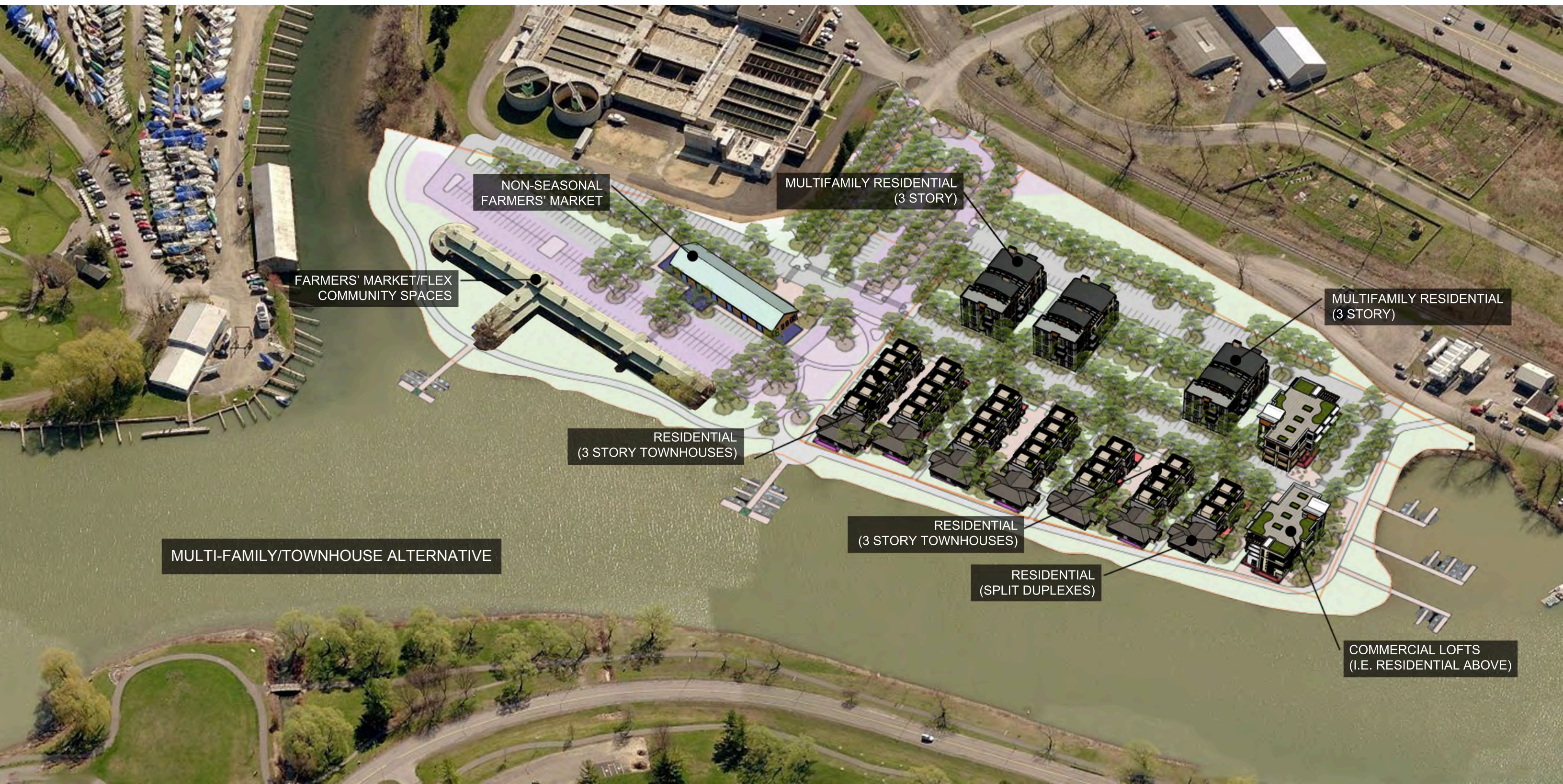
HOTEL ALTERNATIVE





HOTEL ALTERNATIVE





NON-SEASONAL FARMERS' MARKET

MULTIFAMILY RESIDENTIAL (3 STORY)

FARMERS' MARKET/FLEX COMMUNITY SPACES

MULTIFAMILY RESIDENTIAL (3 STORY)

RESIDENTIAL (3 STORY TOWNHOUSES)

MULTI-FAMILY/TOWNHOUSE ALTERNATIVE

RESIDENTIAL (3 STORY TOWNHOUSES)

RESIDENTIAL (SPLIT DUPLEXES)

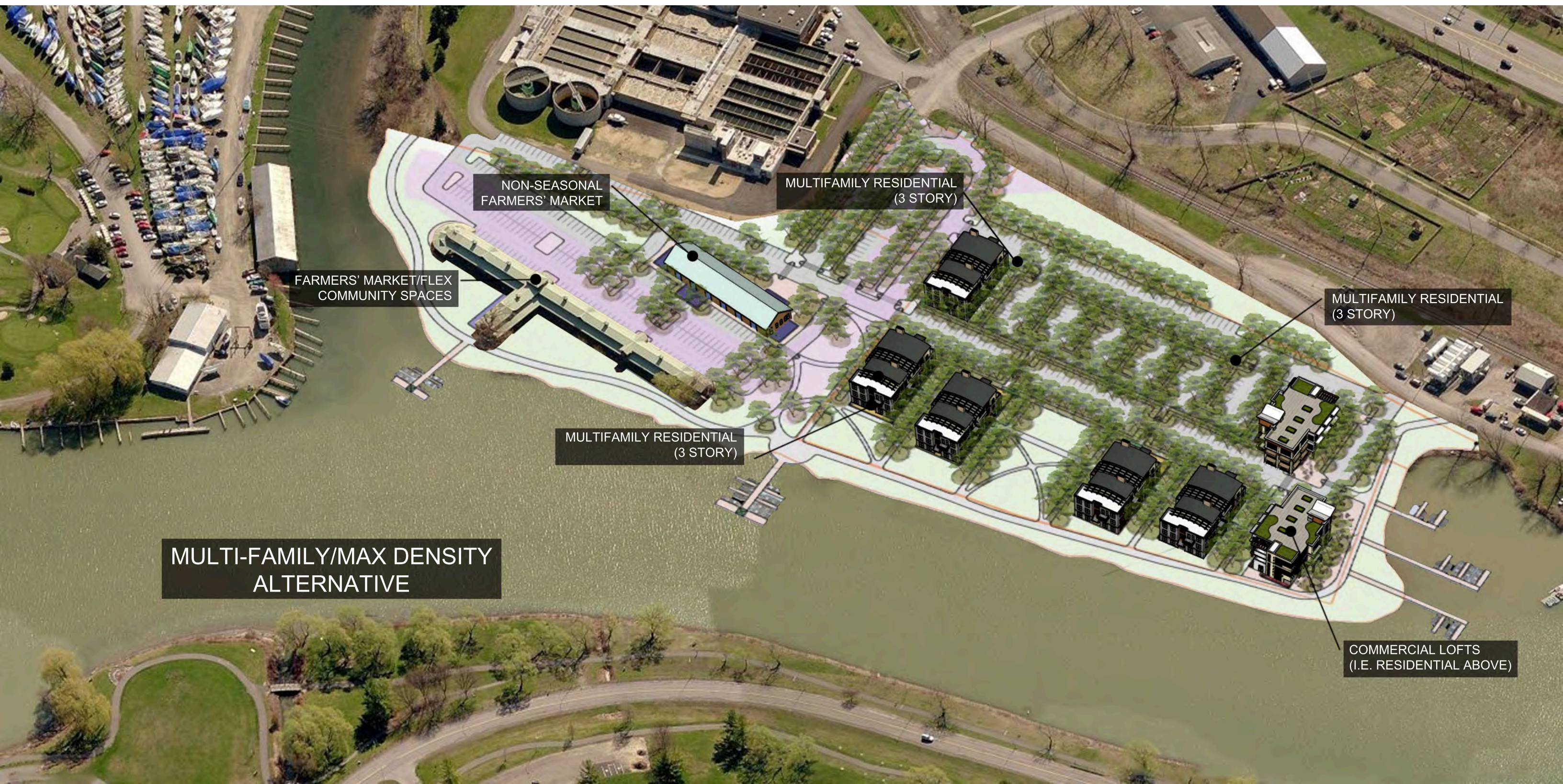
COMMERCIAL LOFTS (I.E. RESIDENTIAL ABOVE)





MULTI-FAMILY/TOWNHOUSE ALTERNATIVE





**MULTI-FAMILY/MAX DENSITY  
ALTERNATIVE**

FARMERS' MARKET/FLEX  
COMMUNITY SPACES

NON-SEASONAL  
FARMERS' MARKET

MULTIFAMILY RESIDENTIAL  
(3 STORY)

MULTIFAMILY RESIDENTIAL  
(3 STORY)

MULTIFAMILY RESIDENTIAL  
(3 STORY)

COMMERCIAL LOFTS  
(I.E. RESIDENTIAL ABOVE)





MULTI-FAMILY/MAX DENSITY  
ALTERNATIVE

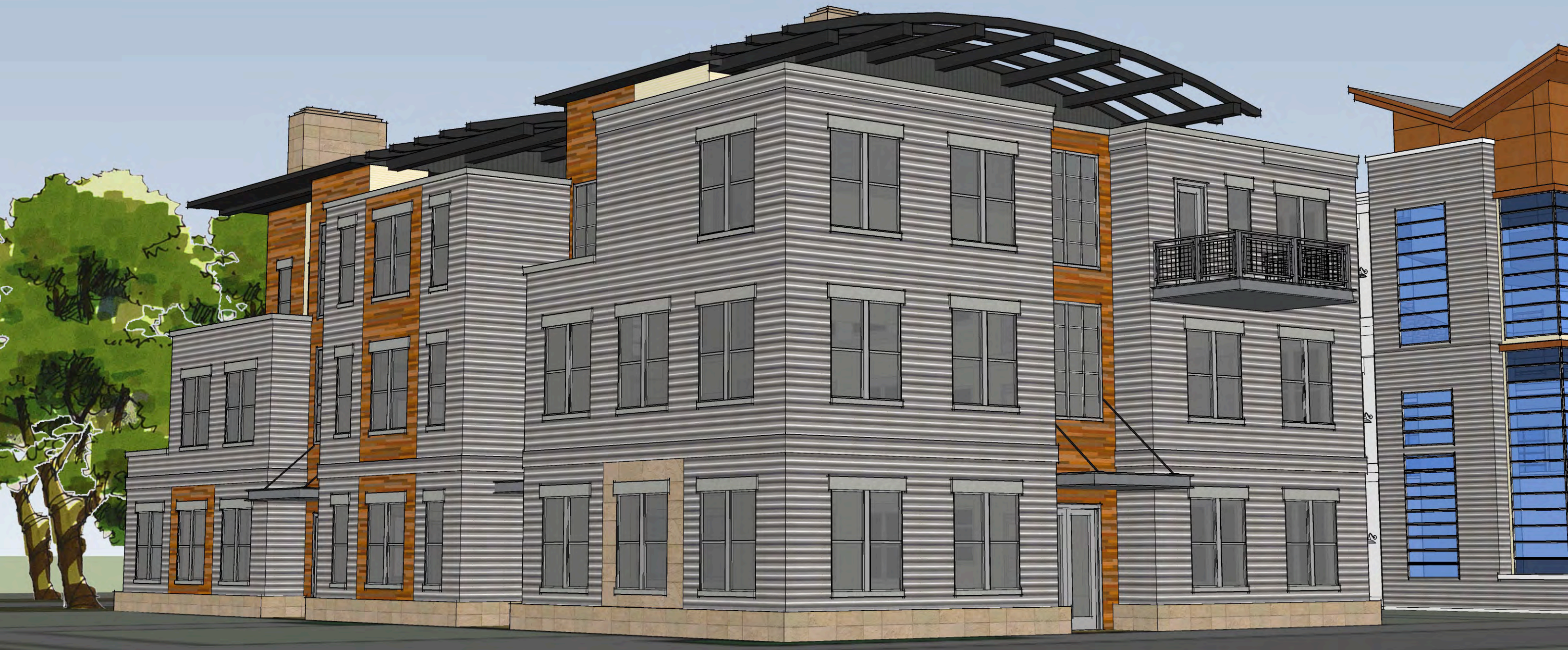


HOTEL  
(124 ROOMS)





MULTI-FAMILY RESIDENTIAL  
(3 STORIES)





COMMERCIAL LOFTS  
(I.E. RESIDENTIAL ABOVE)





RESIDENTIAL  
(3 STORY TOWNHOUSES)







RESIDENTIAL  
(SPLIT DUPLEXES)