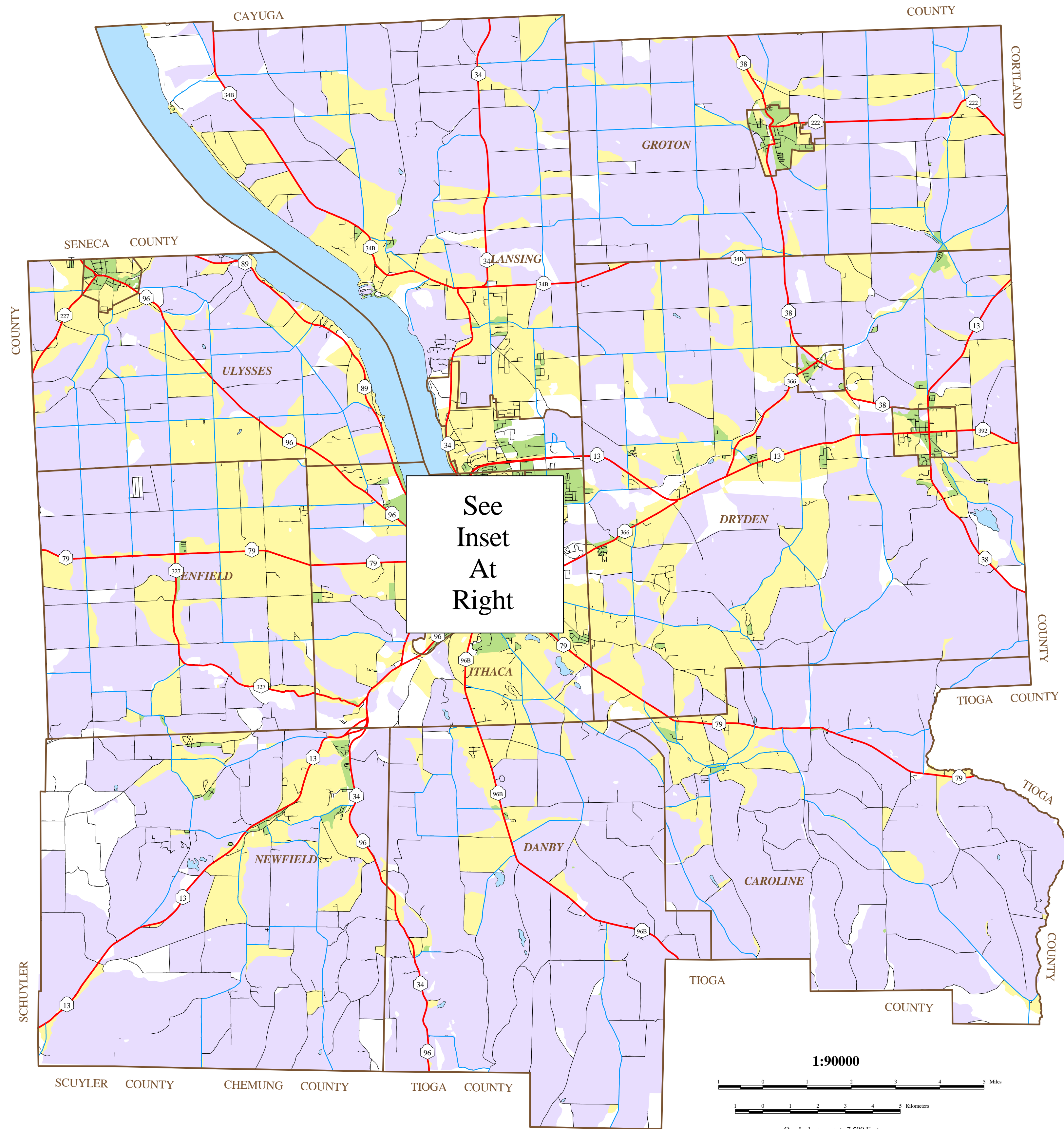


Population Density by Census Block, 1990



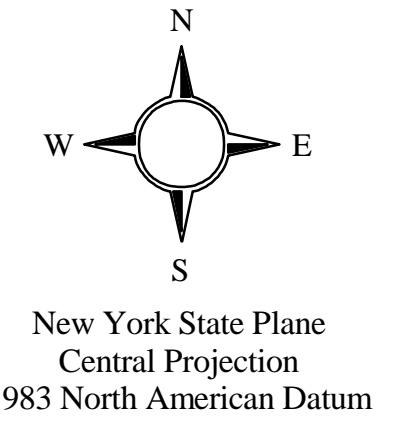
Legend

Density per square mile

- No permanent population
- 1 - 100 people
- 101 - 1000 people
- > 1000 people

Roads

- State Highways
- County Roads
- Local Roads
- Municipal Boundary
- Cayuga Lake



Population density was calculated by dividing the total population of each census block by the area (in square miles).
Prepared by the Tompkins County Planning Department, July 1999.

