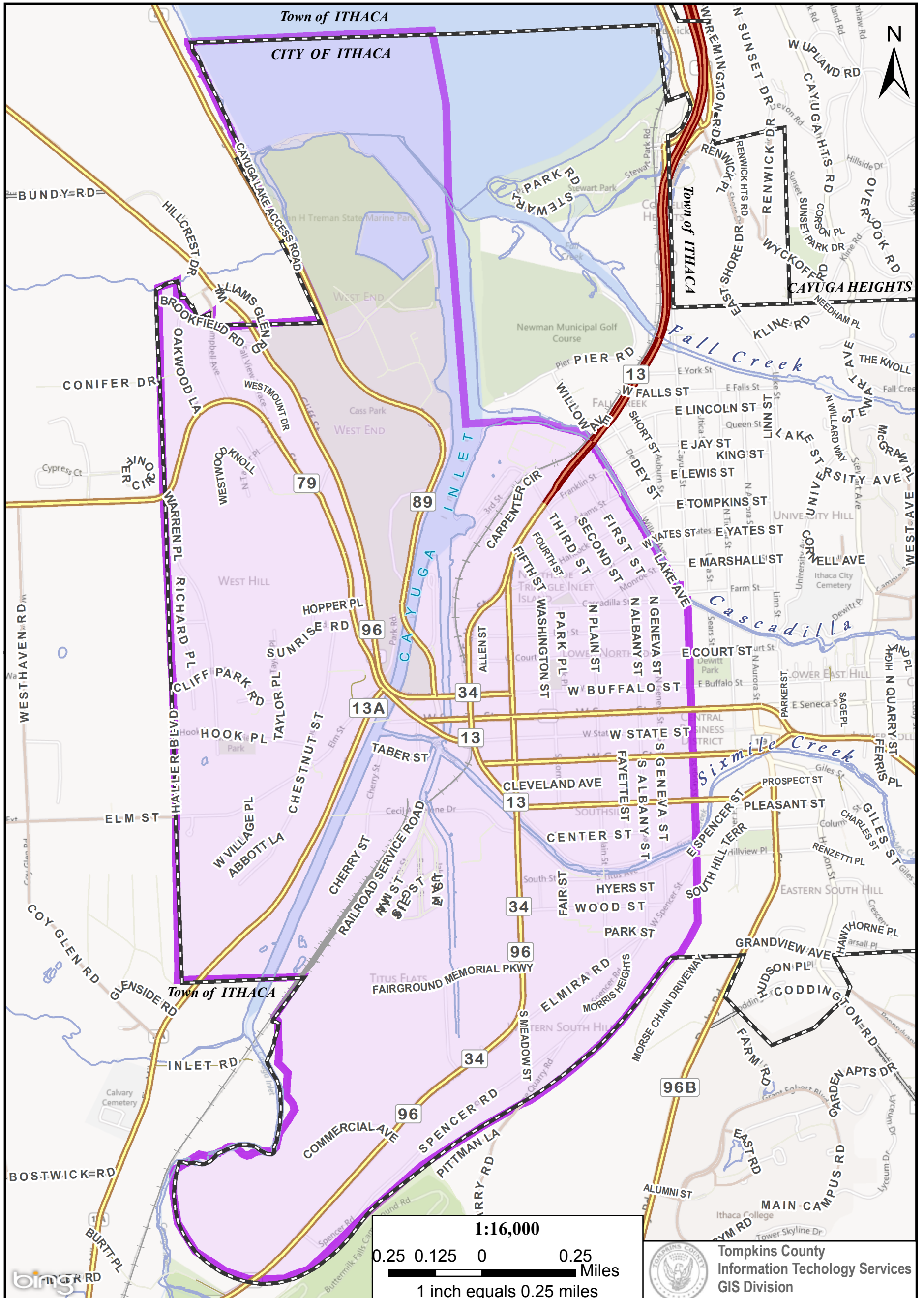


Tompkins County 2012 Reapportionment Plan Legislative District 1

Legal Description - Attachment 1

County Population: 101,564
 District Population: 7,531
 Ideal Average: 7,255
 Deviation from Ideal Average: 3.80%



Tompkins County
 Information Technology Services
 GIS Division

Tompkins County

2012 Reapportionment Plan

Legislative District 2

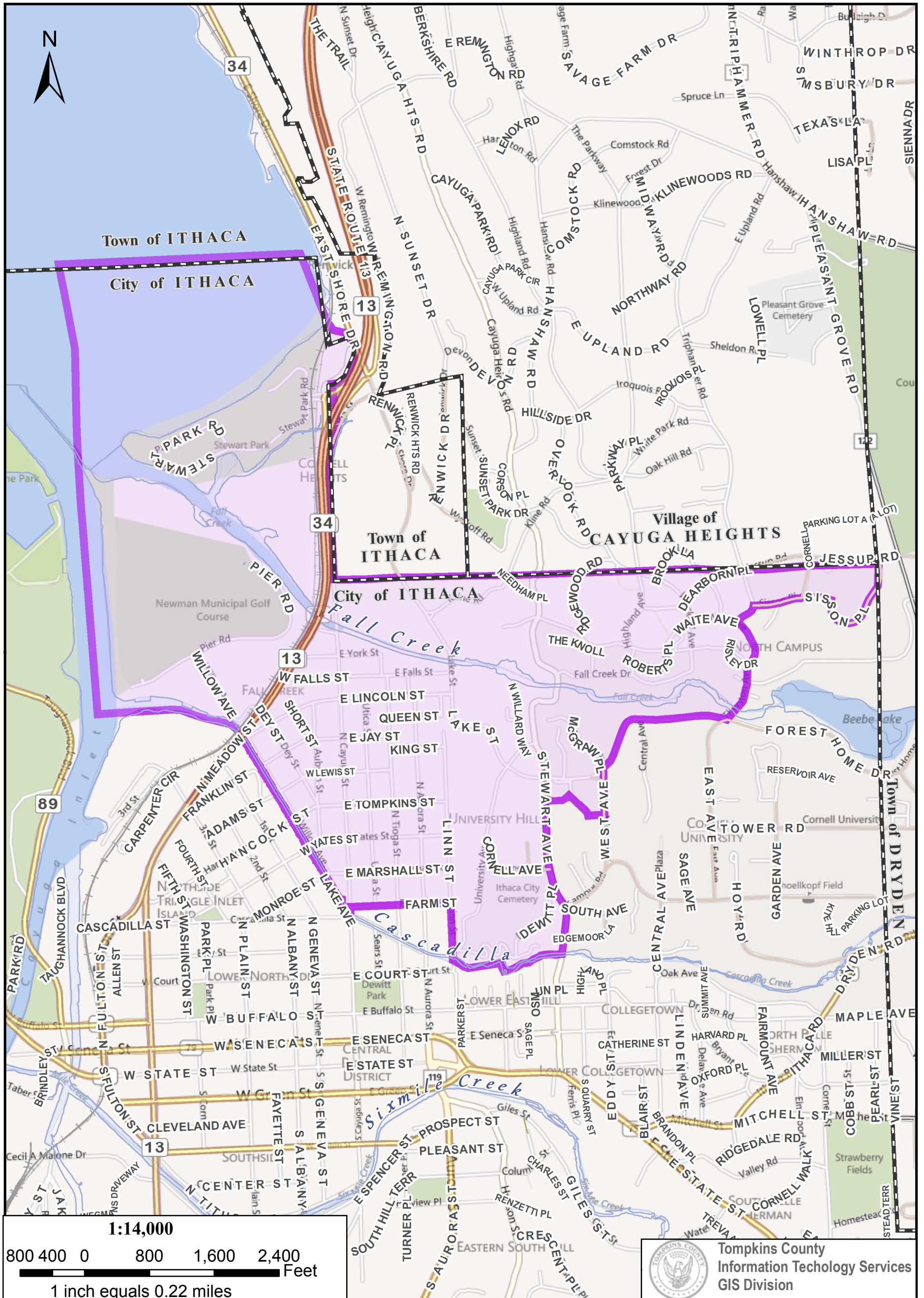
Legal Description - Attachment 2

County Population: 101,564

District Population: 7,544

Ideal Average: 7,255

Deviation from Ideal Average: 3.98%



Tompkins County 2012 Reapportionment Plan Legislative District 3

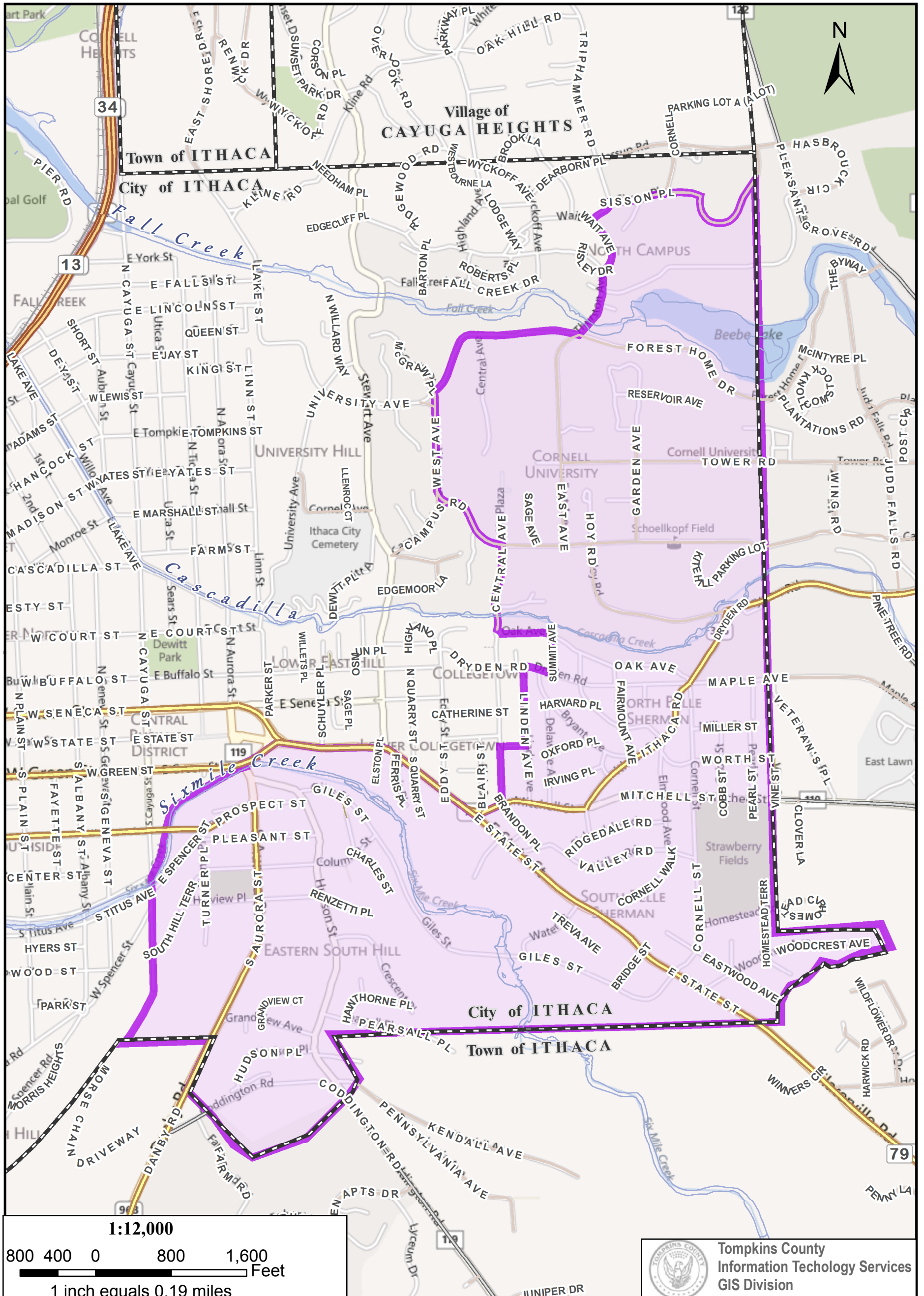
Legal Description - Attachment 3

County Population: 101,564

District Population: 7,530

Ideal Average: 7,255

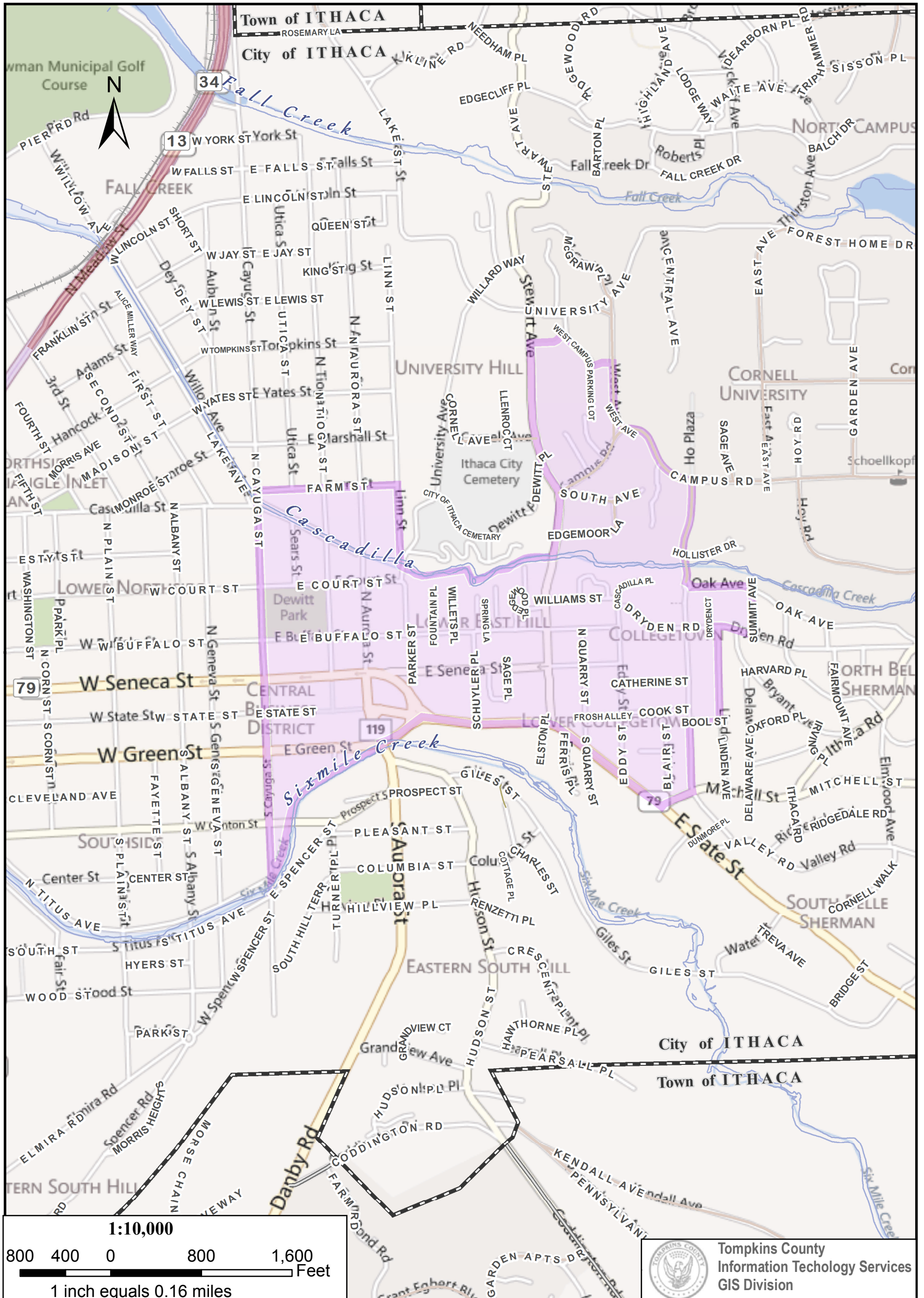
Deviation from Ideal Average: 3.79%



Tompkins County 2012 Reapportionment Plan Legislative District 4

Legal Description - Attachment 4

County Population: 101,564
 District Population: 7,409
 Ideal Average: 7,255
 Deviation from Ideal Average: 2.12%



Tompkins County
 Information Technology Services
 GIS Division

Tompkins County

2012 Reapportionment Plan

Legislative District 5

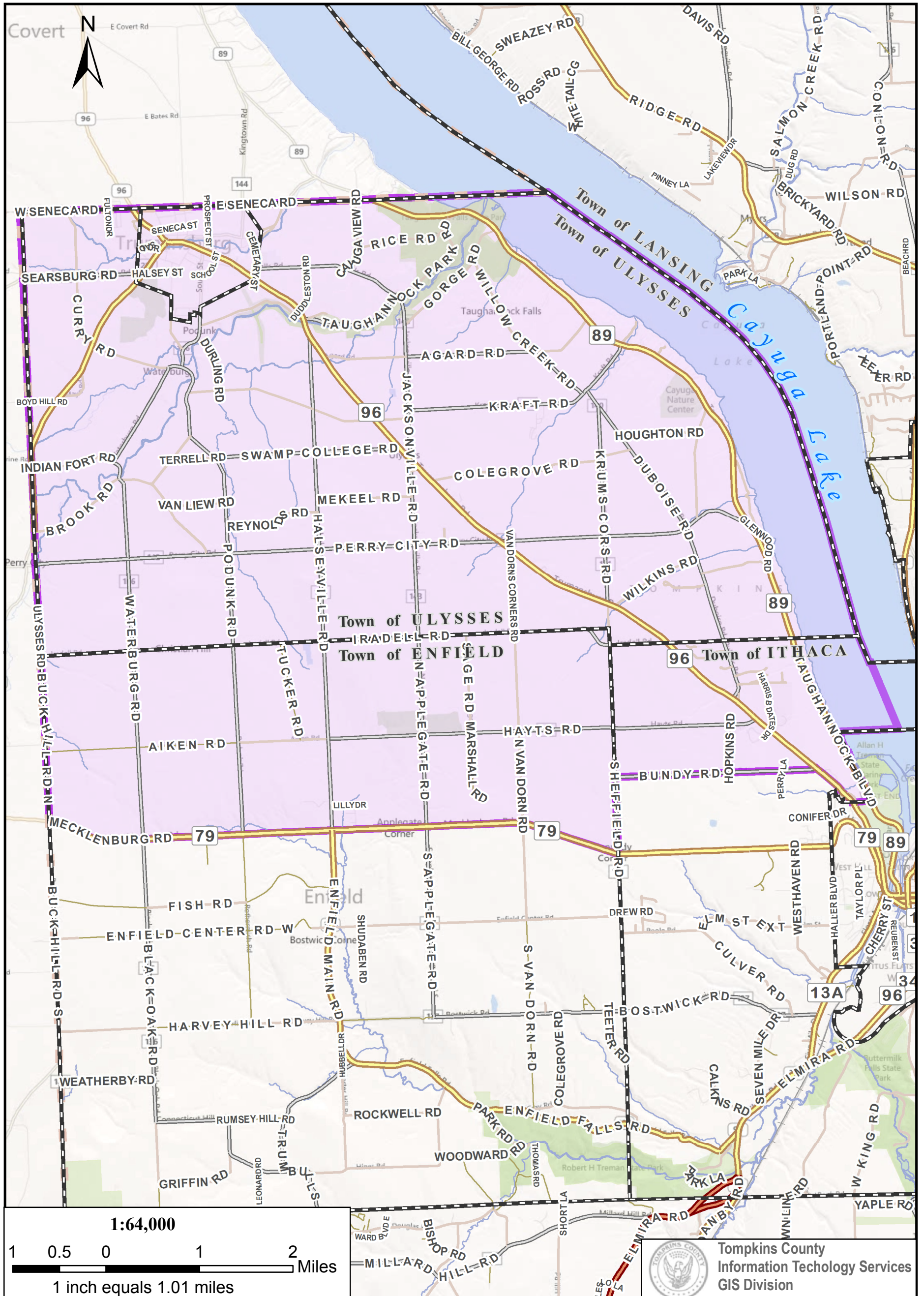
Legal Description - Attachment 5

County Population: 101,564

District Population: 7,562

Ideal Average: 7,255

Deviation from Ideal Average: 4.23%



Tompkins County
Information Technology Services
GIS Division

Tompkins County 2012 Reapportionment Plan Legislative District 6

Legal Description - Attachment 6

County Population: 101,564
 District Population: 7,107
 Ideal Average: 7,255
 Deviation from Ideal Average: -2.04%



Tompkins County
 Information Technology Services
 GIS Division

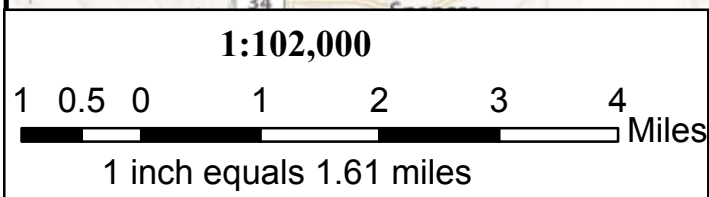
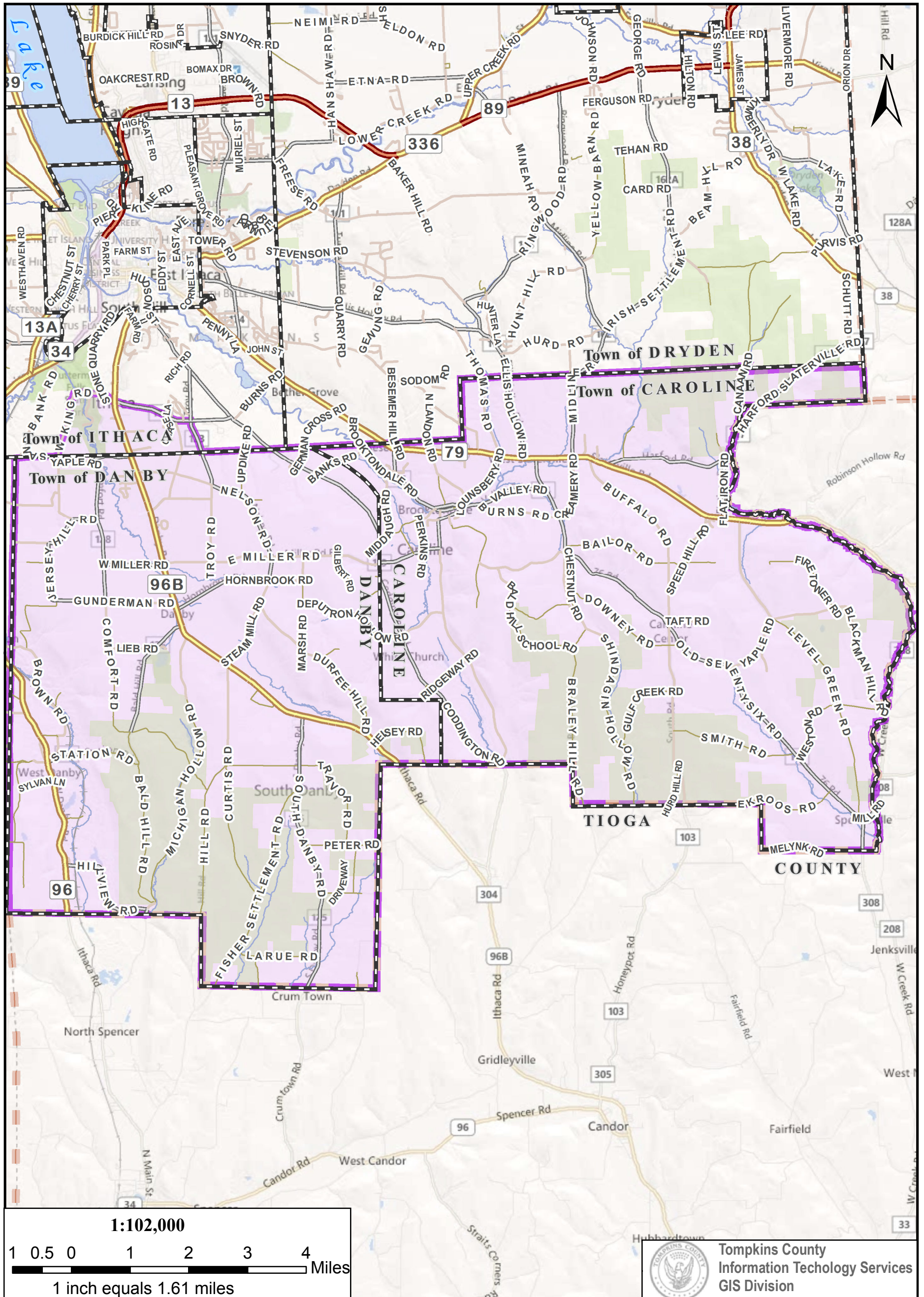
Tompkins County

2012 Reapportionment Plan

Legislative District 7

Legal Description - Attachment 7

County Population: 101,564
 District Population: 7,128
 Ideal Average: 7,255
 Deviation from Ideal Average: -1.75%



Tompkins County
 Information Technology Services
 GIS Division

Tompkins County

2012 Reapportionment Plan

Legislative District 8

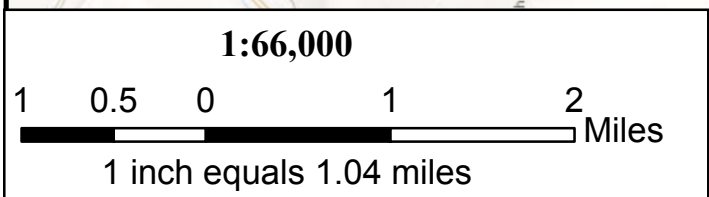
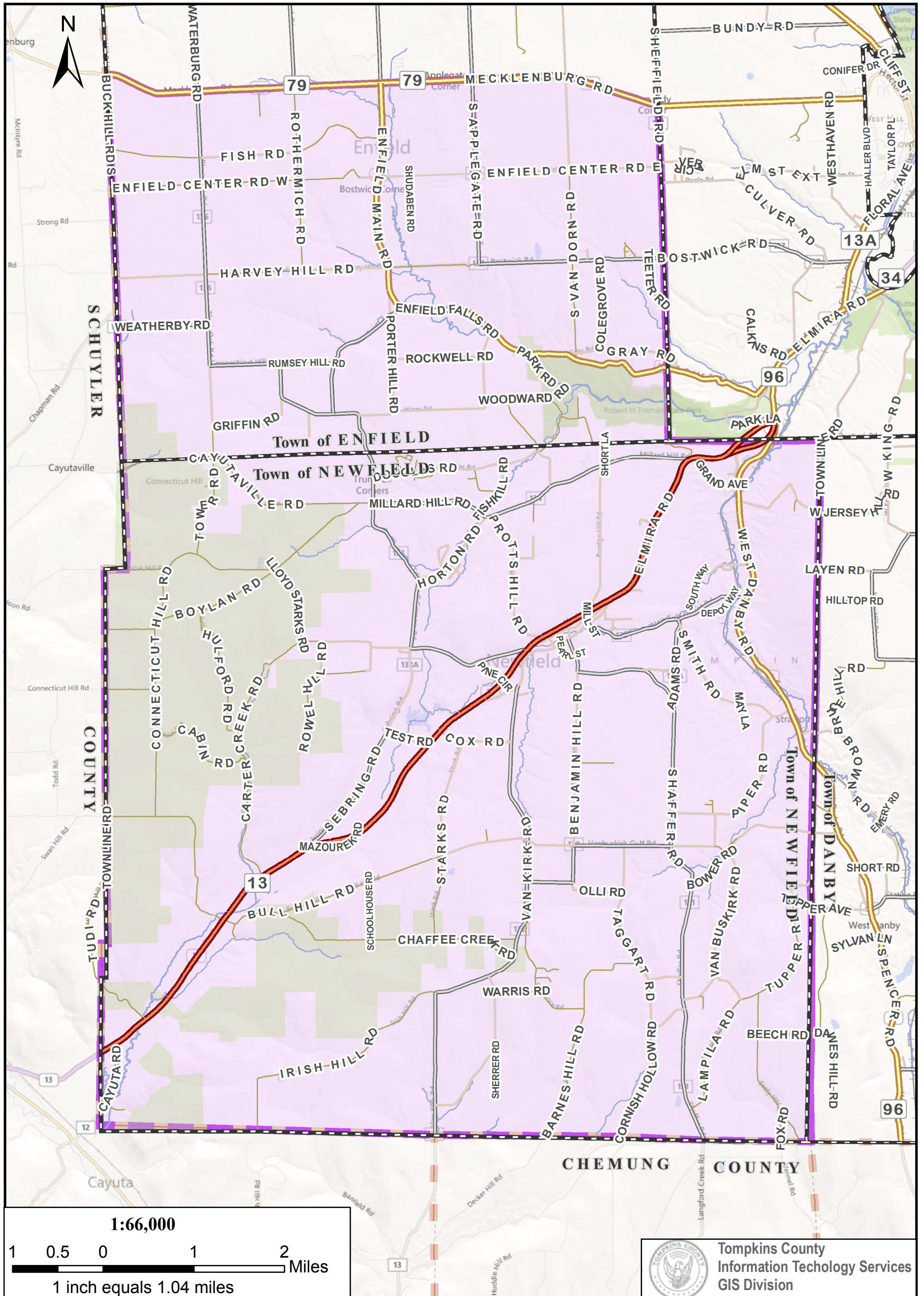
Legal Description - Attachment 8


County Population: 101,564

District Population: 7,345

Ideal Average: 7,255

Deviation from Ideal Average: 1.24%



 Tompkins County
 Information Technology Services
 GIS Division

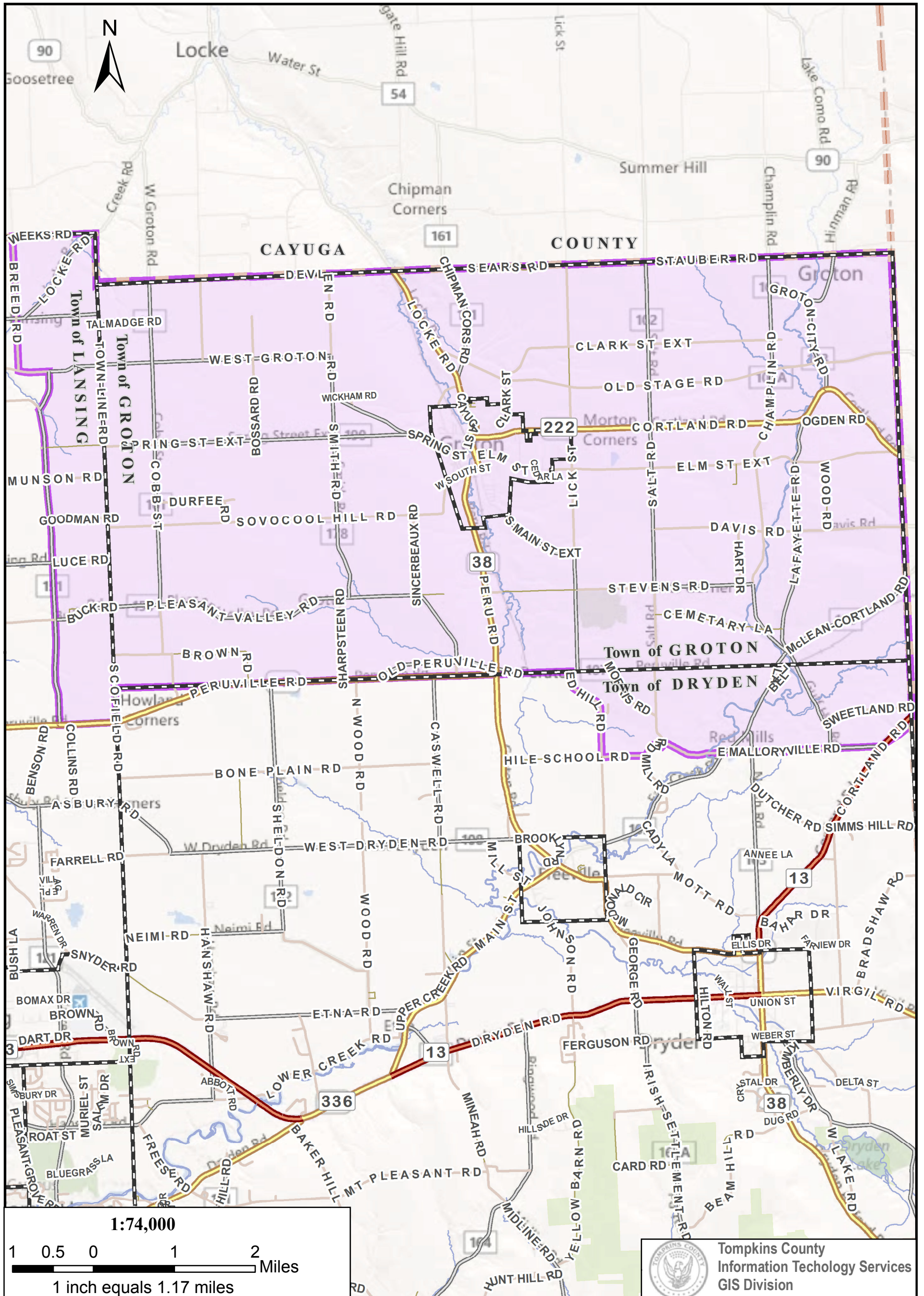
Tompkins County

2012 Reapportionment Plan

Legislative District 9

Legal Description - Attachment 9

County Population: 101,564
 District Population: 6,920
 Ideal Average: 7,255
 Deviation from Ideal Average: -4.62%



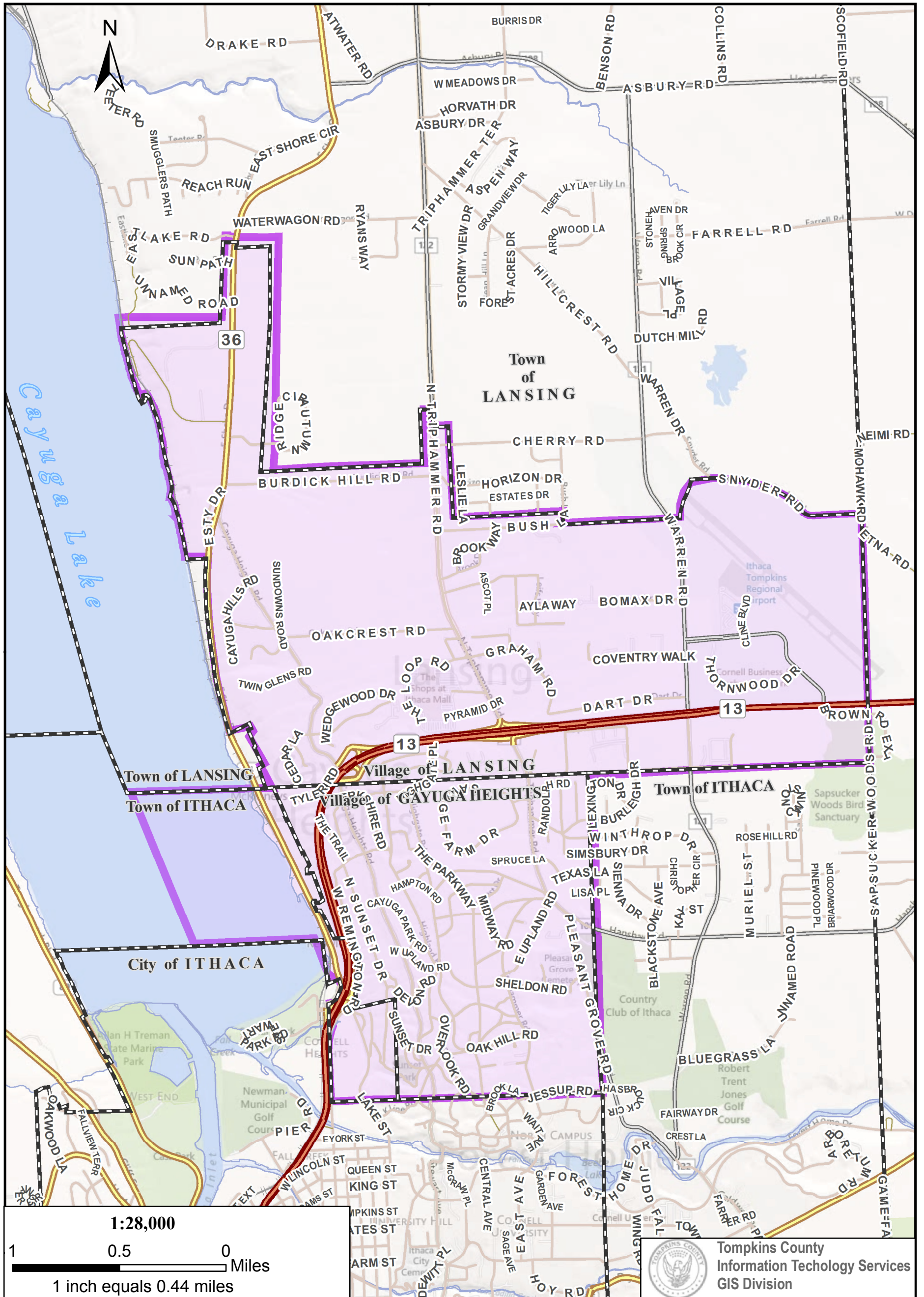
Tompkins County

2012 Reapportionment Plan

Legislative District 10

Legal Description - Attachment 10

County Population: 101,564
 District Population: 7,443
 Ideal Average: 7,255
 Deviation from Ideal Average: 2.59%



Tompkins County
 Information Technology Services
 GIS Division

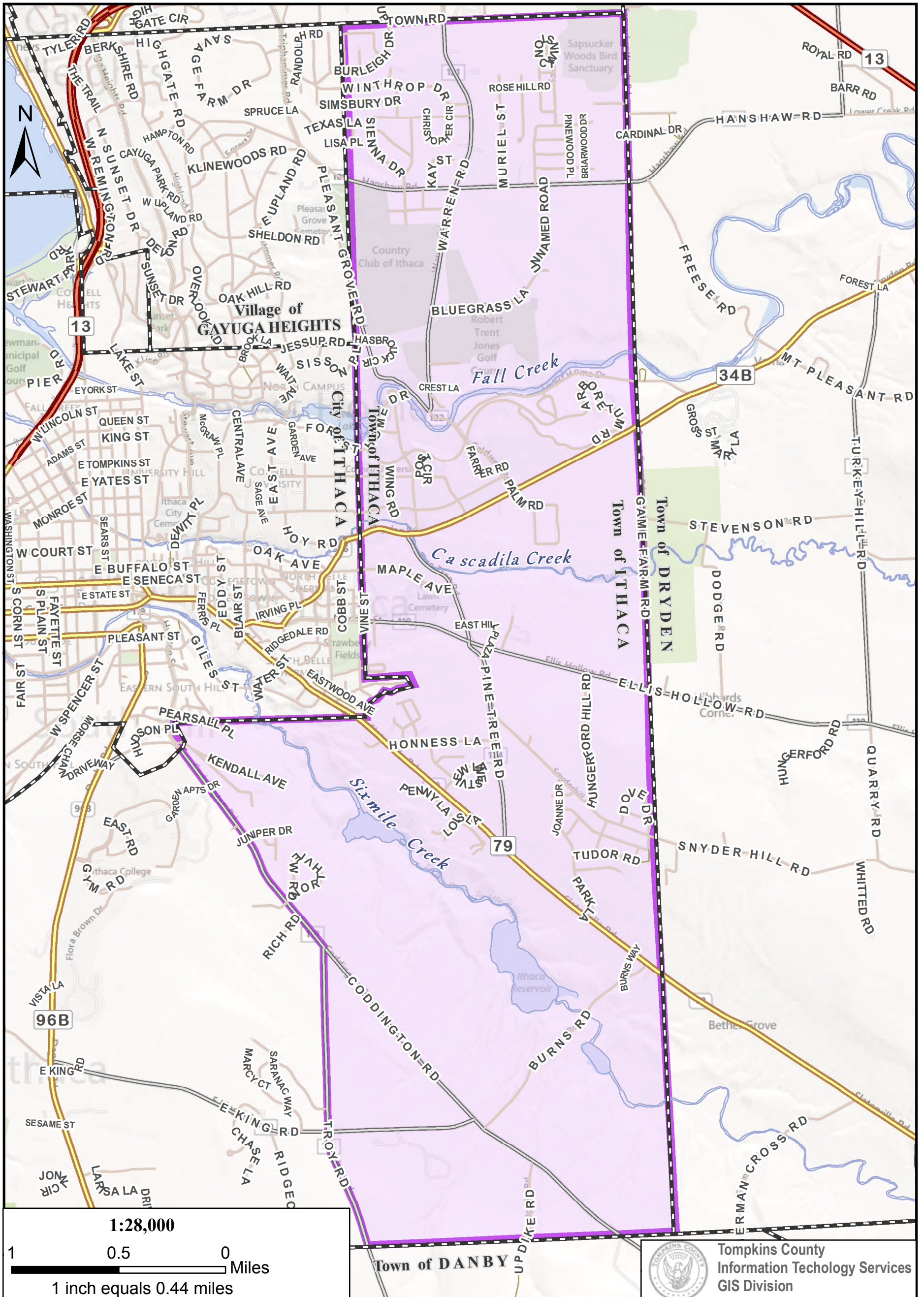
Tompkins County

2012 Reapportionment Plan

Legislative District 11

Legal Description - Attachment 11

County Population: 101,564
 District Population: 6,898
 Ideal Average: 7,255
 Deviation from Ideal Average: -4.92%



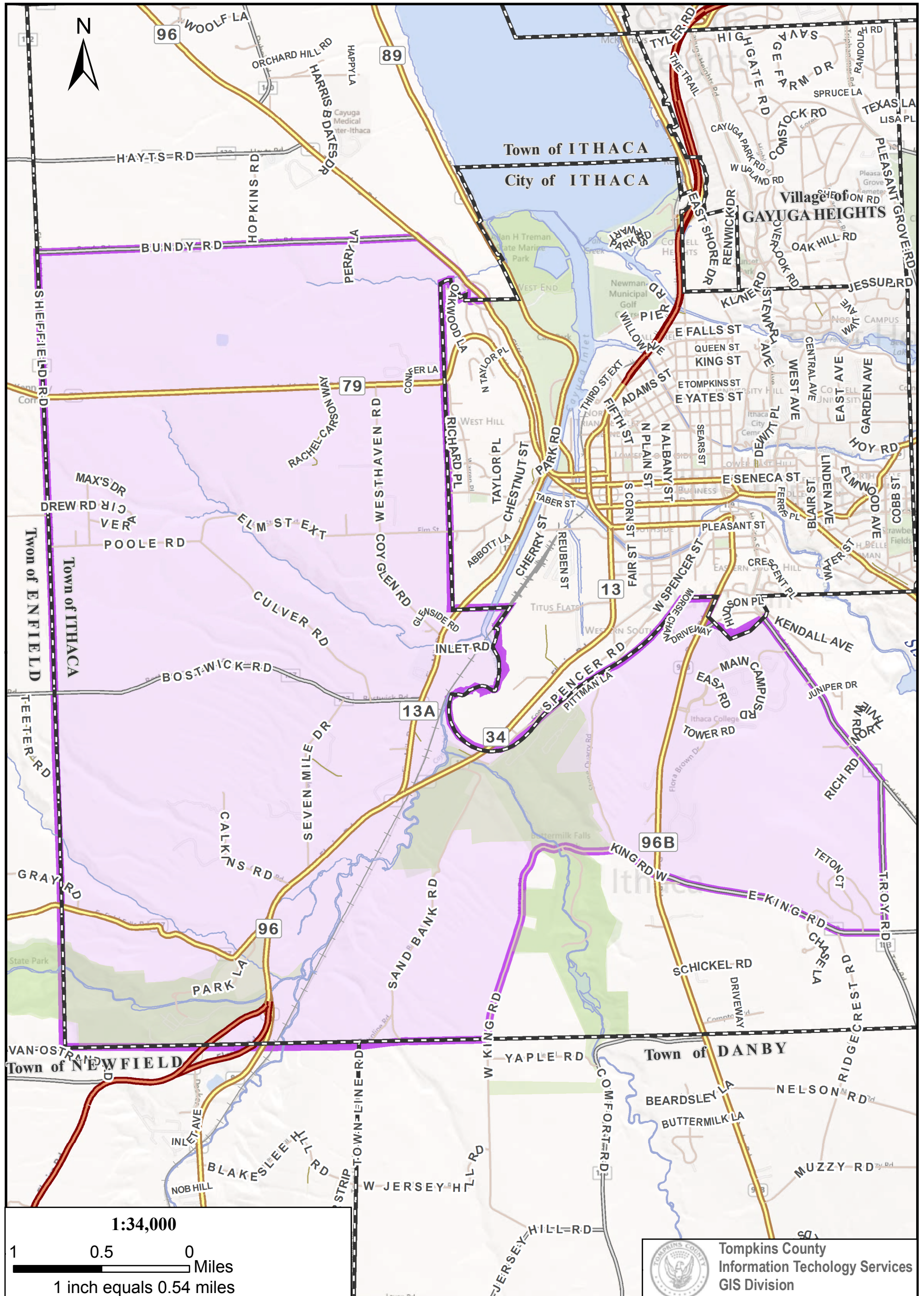
Tompkins County

2012 Reapportionment Plan

Legislative District 12

Legal Description - Attachment 12

County Population: 101,564
 District Population: 7,285
 Ideal Average: 7,255
 Deviation from Ideal Average: 0.41%



Tompkins County

2012 Reapportionment Plan

Legislative District 13

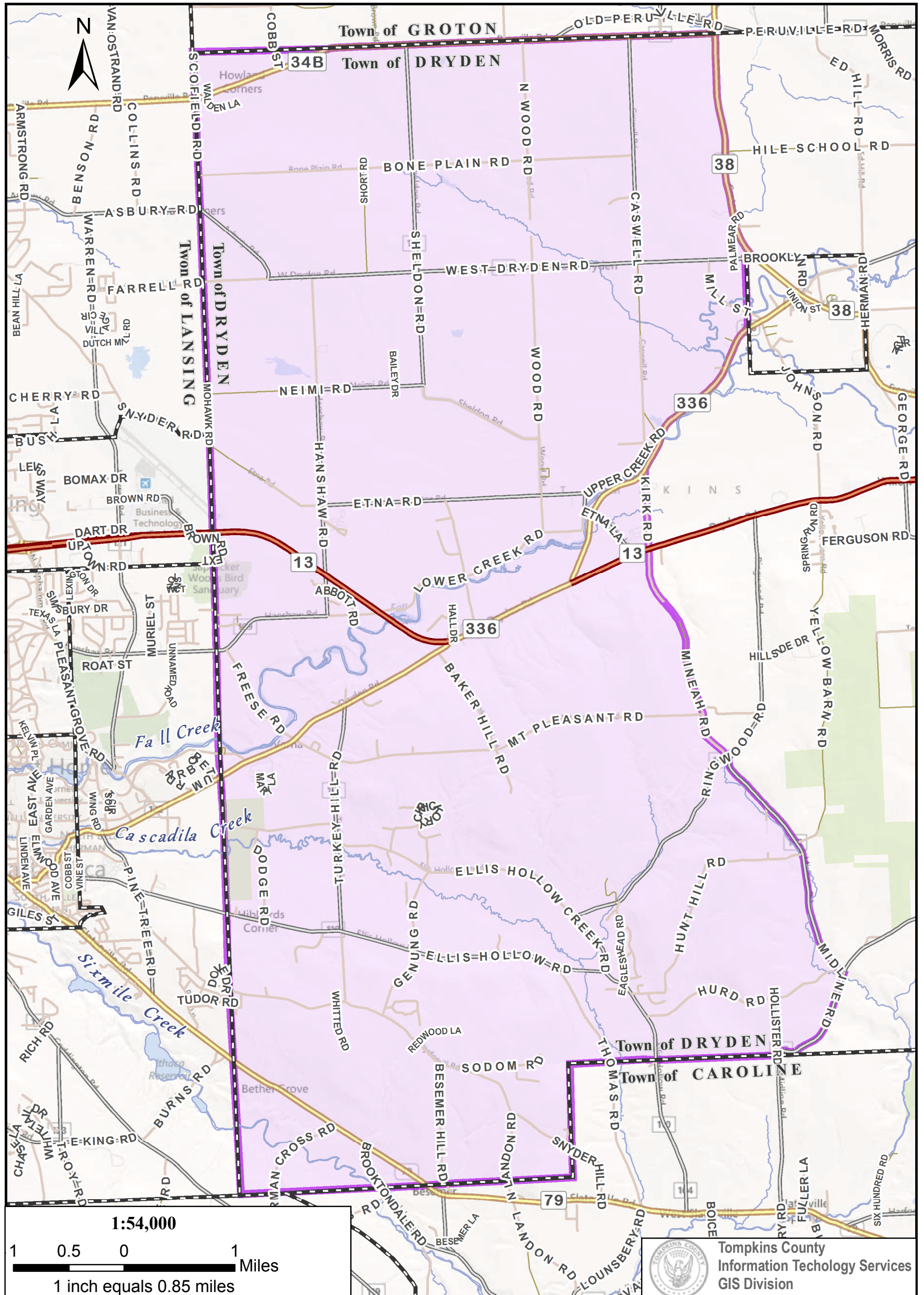
Legal Description - Attachment 13

County Population: 101,564

District Population: 6,938

Ideal Average: 7,255

Deviation from Ideal Average: -4.37%



Tompkins County
Information Technology Services
GIS Division

Tompkins County

2012 Reapportionment Plan

Legislative District 14

Legal Description - Attachment 14

County Population: 101,564
 District Population: 6,924
 Ideal Average: 7,255
 Deviation from Ideal Average: -4.56%

