

FOR TAX PURPOSES ONLY
NOT TO BE USED FOR CONVEYANCE
 All tax maps are referenced to the New York State Plane Central Coordinate System using the 1983 North American Datum. Property lines have been registered to 1991-92 Tompkins County Digital Planimetric Base Map, and, as a result, dimensions and acreages may vary from legal descriptions. For complete legal descriptions or conveyances, please refer to the appropriate deeds and surveys.

NOTICE OF DISCLAIMER
 This map represents a compilation of graphical and textual information from deeds and surveys, a digital planimetric base map, and digital conversion of hand-drawn mylar maps. Errors and omissions can occur from each of these sources; each source represents a large number of records and originators of information. As a practical matter, the County does not warrant the accuracy or completeness of the information portrayed. The end user of these maps agrees to accept the data "as is" with the full knowledge that errors and omissions may exist, and to hold harmless the County for any damages that may result from an inappropriate use of these maps.

SPECIAL DISTRICT INFORMATION
 Trumansburg Central School District
 Enfield Fire Protection District

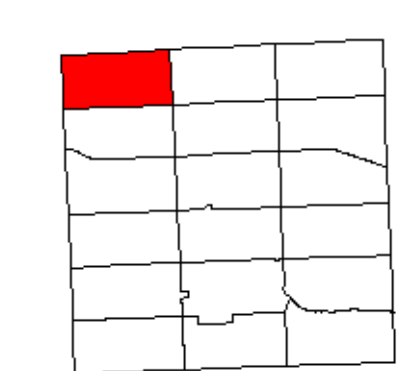
- Building Footprint (1991-2022)
- Curb/Pavement Line
- Railroad
- Hydrography
- Special Districts
- Municipality
- Military Tract/Watkins & Flint Lot Number

- LEGEND**
- Parcel Connector
 - Property Line
 - Former Property Line
 - Current Year Changes
 - Block Limit
 - External Tax Map
 - Block Number

Parcel Lot Number	Previous Lot Number	Subdivision Lot Number	Deed/Survey Acreage	Computed Acreage	Grouped (Total) Acreage	Scaled (Calculated) Acreage	Deed Dimension
43.1							
3.12							
4.3							
5.6							
2.11							
18.50							
100s							
100d							

TOWN OF ENFIELD
 TOMPKINS COUNTY, N.Y.

0 175 350 700 Feet



MAP: 1
 SCALE: 1" = 400'
 (When plotted on Arch D Media)
 11 x 17" (47%), scale is 1" = 800'
 MAP REVISED: 1-JULY-2022
 MAP PRINTED: 1-JULY-2022



FOR TAX PURPOSES ONLY
NOT TO BE USED FOR CONVEYANCE

All tax maps are referenced to the New York State Plane Central Coordinate System using the 1983 North American Datum. Property lines have been registered to 1991-92 Tompkins County Digital Planimetric Base Map, and, as a result, dimensions and acreages may vary from legal descriptions. For complete legal descriptions or conveyances, please refer to the appropriate deeds and surveys.

NOTICE OF DISCLAIMER

This map represents a compilation of graphical and textual information from deeds and surveys, a digital planimetric base map, and digital conversion of hand-drawn mylar maps. Errors and omissions can occur from each of these sources, each source represents a large number of records and originators of information. As a practical matter, the County does not warrant the accuracy or completeness of the information portrayed. The end user of these maps agrees to accept the data "as is" with the full knowledge that errors and omissions may exist, and to hold harmless the County for any damages that may result from an inappropriate use of these maps.

SPECIAL DISTRICT INFORMATION

Trumansburg Central School District
Enfield Fire Protection District

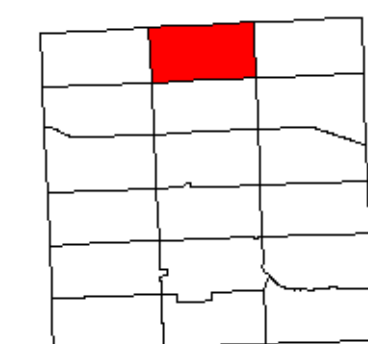
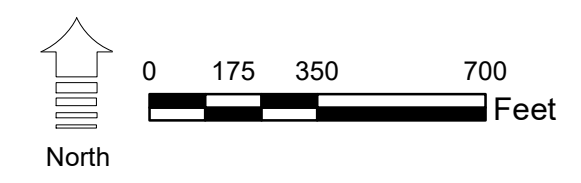
- Building Footprint (1991-2022)
- Curb/Pavement Line
- Railroad
- Hydrography
- Special Districts
- Municipality
- Military Tract/Watkins & Flint Lot Number

LEGEND

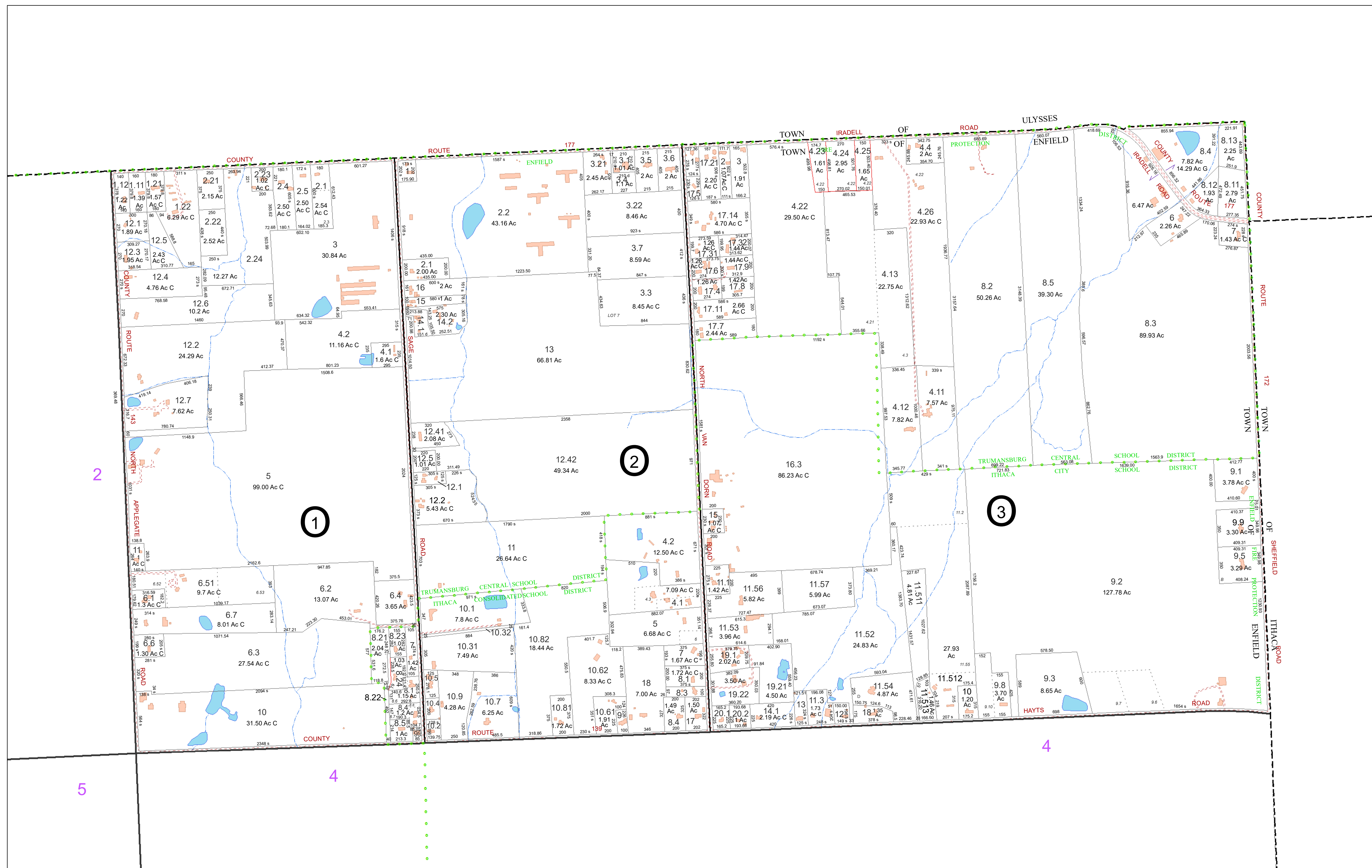
- Parcel Connector
- Property Line
- Former Property Line
- Current Year Changes
- Block Limit
- External Tax Map
- Block Number

- 43.1** Parcel Lot Number
- 3 12** Previous Lot Number
- 4 3** Subdivision Lot Number
- 5.6 Ac** Deed/Survey Acreage
- 2.11 Ac C** Computed Acreage
- 18.50 Ac G** Grouped (Total) Acreage
- 100s** Scaled (Calculated) Acreage
- 100d** Deed Dimension

TOWN OF ENFIELD
TOMPKINS COUNTY, N.Y.



MAP: 2
SCALE: 1" = 400'
(When plotted on Arch D Media)
11 x 17" (47%), scale is 1" = 800'
MAP REVISED: 1-JULY-2022
MAP PRINTED: 1-JULY-2022



FOR TAX PURPOSES ONLY
NOT TO BE USED FOR CONVEYANCE

All tax maps are referenced to the New York State Plane Central Coordinate System using the 1983 North American Datum. Property lines have been registered to 1991-92 Tompkins County Digital Planimetric Base Map, and, as a result, dimensions and acreages may vary from legal descriptions. For complete legal descriptions or conveyances, please refer to the appropriate deeds and surveys.

NOTICE OF DISCLAIMER
This map represents a compilation of graphical and textual information from deeds and surveys, a digital planimetric base map, and digital conversion of hand-drawn mylar maps. Errors and omissions can occur from each of these sources; each source represents a large number of records and originators of information. As a practical matter, the County does not warrant the accuracy or completeness of the information portrayed. The user of these maps agrees to accept the data "as is" with the full knowledge that errors and omissions may exist, and to hold harmless the County for any damages that may result from an inappropriate use of these maps.

SPECIAL DISTRICT INFORMATION
Ithaca City School District
Trumansburg Central School District
Enfield Fire Protection District

- Building Footprint (1991-2022)
- Curb/Pavement Line
- Railroad
- Hydrography
- Special Districts
- Municipality
- Military Tract/Watkins & Flint Lot Number

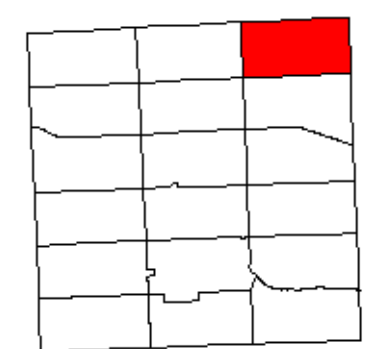
- LEGEND**
- Parcel Connector
 - Property Line
 - Former Property Line
 - Current Year Changes
 - Block Limit
 - External Tax Map
 - Block Number

- 43.1 Parcel Lot Number
- 3.12 Previous Lot Number
- 4.3 Subdivision Lot Number
- 5.6 Ac Deed/Survey Acreage
- 2.11 Ac C Computed Acreage
- 18.50 Ac G Grouped (Total) Acreage
- 100s Scaled (Calculated) Acreage
- 100d Deed Dimension

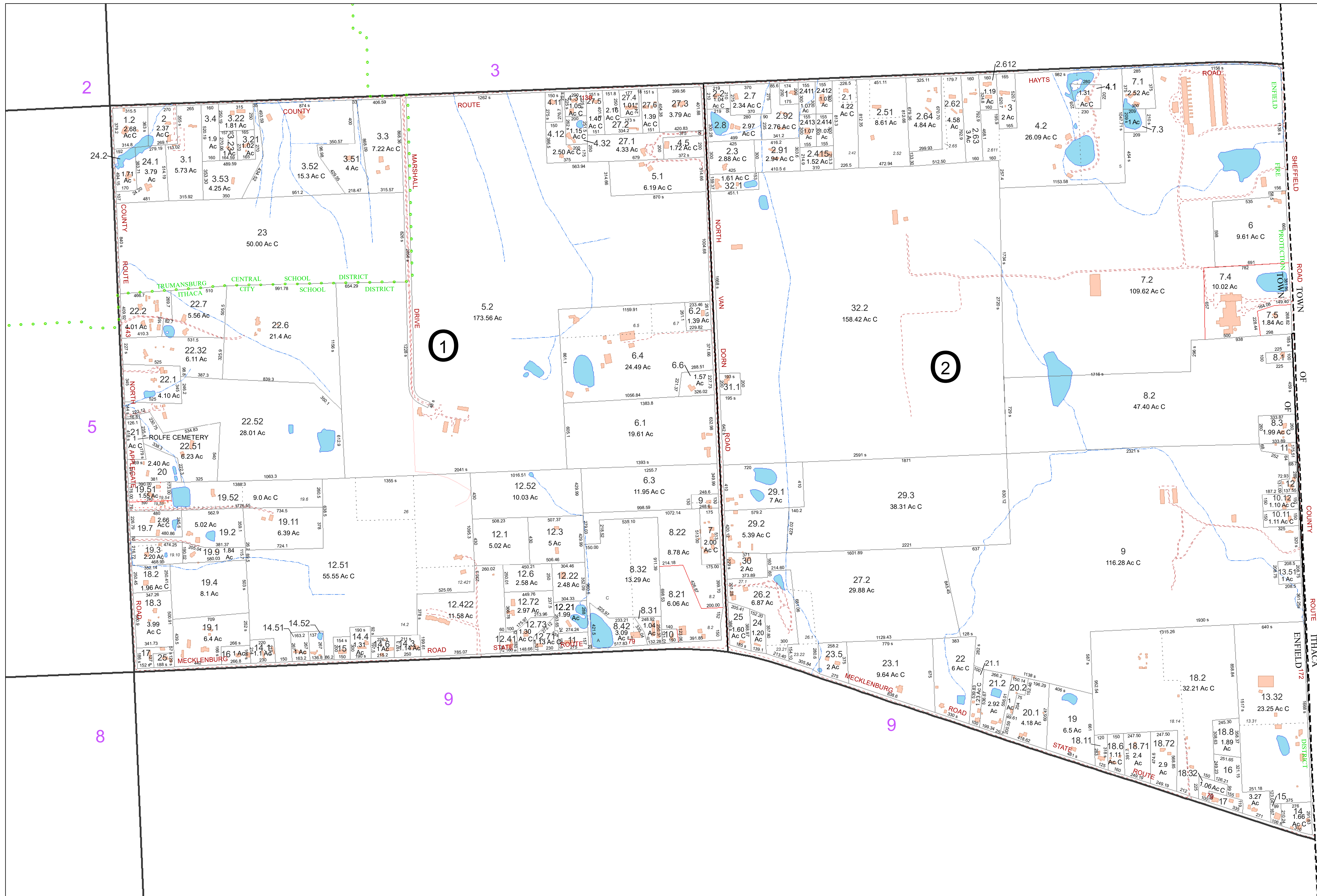
TOWN OF ENFIELD
TOMPKINS COUNTY, N.Y.

0 175 350 700 Feet

North



MAP: 3
SCALE: 1" = 400'
(When plotted on Arch D Media)
11 x 17" (47%), scale is 1" = 800'
MAP REVISED: 1-JULY-2022
MAP PRINTED: 1-JULY-2022



FOR TAX PURPOSES ONLY
NOT TO BE USED FOR CONVEYANCE

All tax maps are referenced to the New York State Plane Central Coordinate System using the 1983 North American Datum. Property lines have been registered to 1991-92 Tompkins County Digital Planimetric Base Map, and, as a result, dimensions and acreages may vary from legal descriptions. For complete legal descriptions or conveyances, please refer to the appropriate deeds and surveys.

NOTICE OF DISCLAIMER

This map represents a compilation of graphical and textual information from deeds and surveys, a digital planimetric base map, and digital conversion of hand-drawn mylar maps. Errors and omissions can occur from each of these sources; each source represents a large number of records and originators of information. As a practical matter, the County does not warrant the accuracy or completeness of the information portrayed. The user of these maps agrees to accept the data "as is" with the full knowledge that errors and omissions may exist, and to hold harmless the County for any damages that may result from an inappropriate use of these maps.

SPECIAL DISTRICT INFORMATION

Ithaca City School District
Trumansburg Central School District
Enfield Fire Protection District

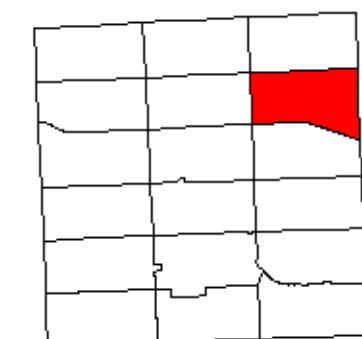
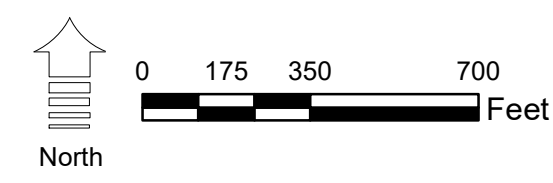
- Building Footprint (1991-2022)
- Curb/Pavement Line
- Railroad
- Hydrography
- Special Districts
- Municipality
- Military Tract/Watkins & Flint Lot Number

LEGEND

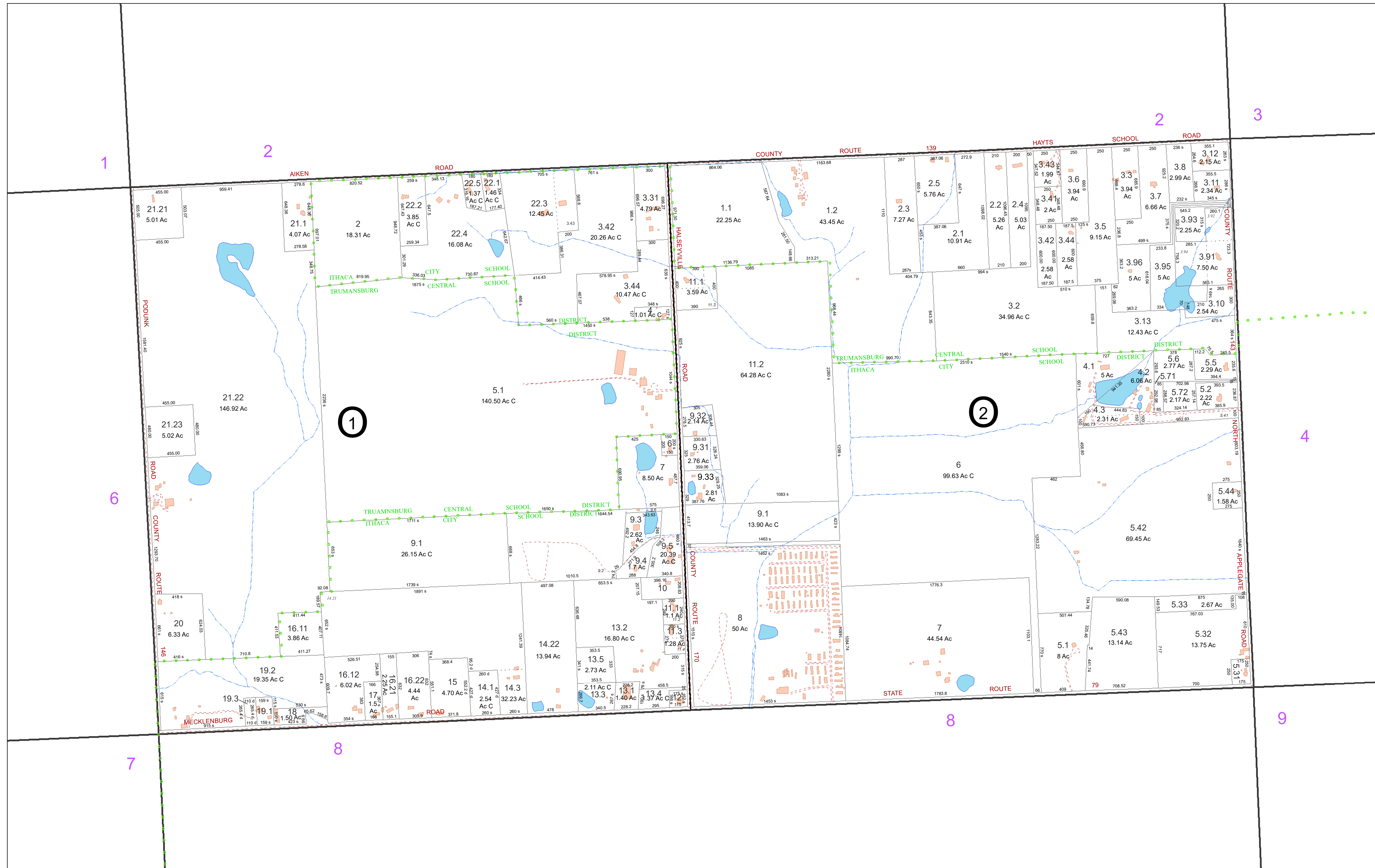
- Parcel Connector
- Property Line
- Former Property Line
- Current Year Changes
- Block Limit
- External Tax Map
- Block Number

- 43.1** Parcel Lot Number
- 3 12** Previous Lot Number
- 4 3** Subdivision Lot Number
- 5.6 Ac** Deed/Survey Acreage
- 2.11 Ac C** Computed Acreage
- 18.50 Ac C** Grouped (Total) Acreage
- 100s** Scaled (Calculated) Acreage
- 100d** Deed Dimension

TOWN OF ENFIELD
TOMPKINS COUNTY, N.Y.



MAP: 4
SCALE: 1" = 400'
(When plotted on Arch D Media)
11 x 17" (47%), scale is 1" = 800'
MAP REVISED: 1-JULY-2022
MAP PRINTED: 1-JULY-2022



FOR TAX PURPOSES ONLY
NOT TO BE USED FOR CONVEYANCE

All tax maps are referenced to the New York State Plane Central Coordinate System using the 1983 North American Datum. Property lines have been registered to 1991-92 Tompkins County Digital Planimetric Base Map, and, as a result, dimensions and acreages may vary from legal descriptions. For complete legal descriptions or conveyances, please refer to the appropriate deeds and surveys.

NOTICE OF DISCLAIMER

This map represents a compilation of graphical and textual information from deeds and surveys, a digital planimetric base map, and digital conversion of hand-drawn mylar maps. Errors and omissions can occur from each of these sources; each source represents a large number of records and originates of information. As a practical matter, the County does not warrant the accuracy or completeness of the information portrayed. The user of these maps agrees to accept the data "as is" with the full knowledge that errors and omissions may exist, and to hold harmless the County for any damages that may result from an inappropriate use of these maps.

SPECIAL DISTRICT INFORMATION

Ithaca City School District
Trumansburg Central School District
Enfield Fire Protection District

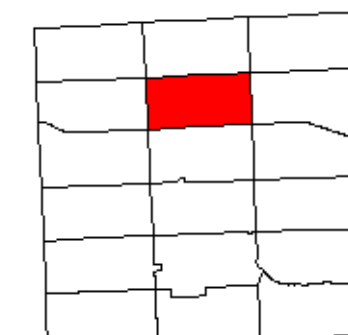
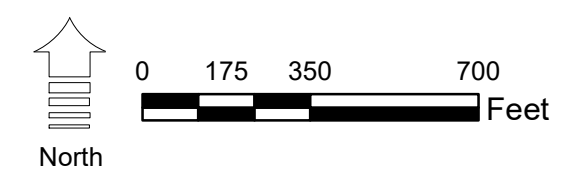
- Building Footprint (1991-2022)
- Curb/Pavement Line
- Railroad
- Hydrography
- Special Districts
- Municipality
- Military Tract/Watkins & Flint Lot Number

LEGEND

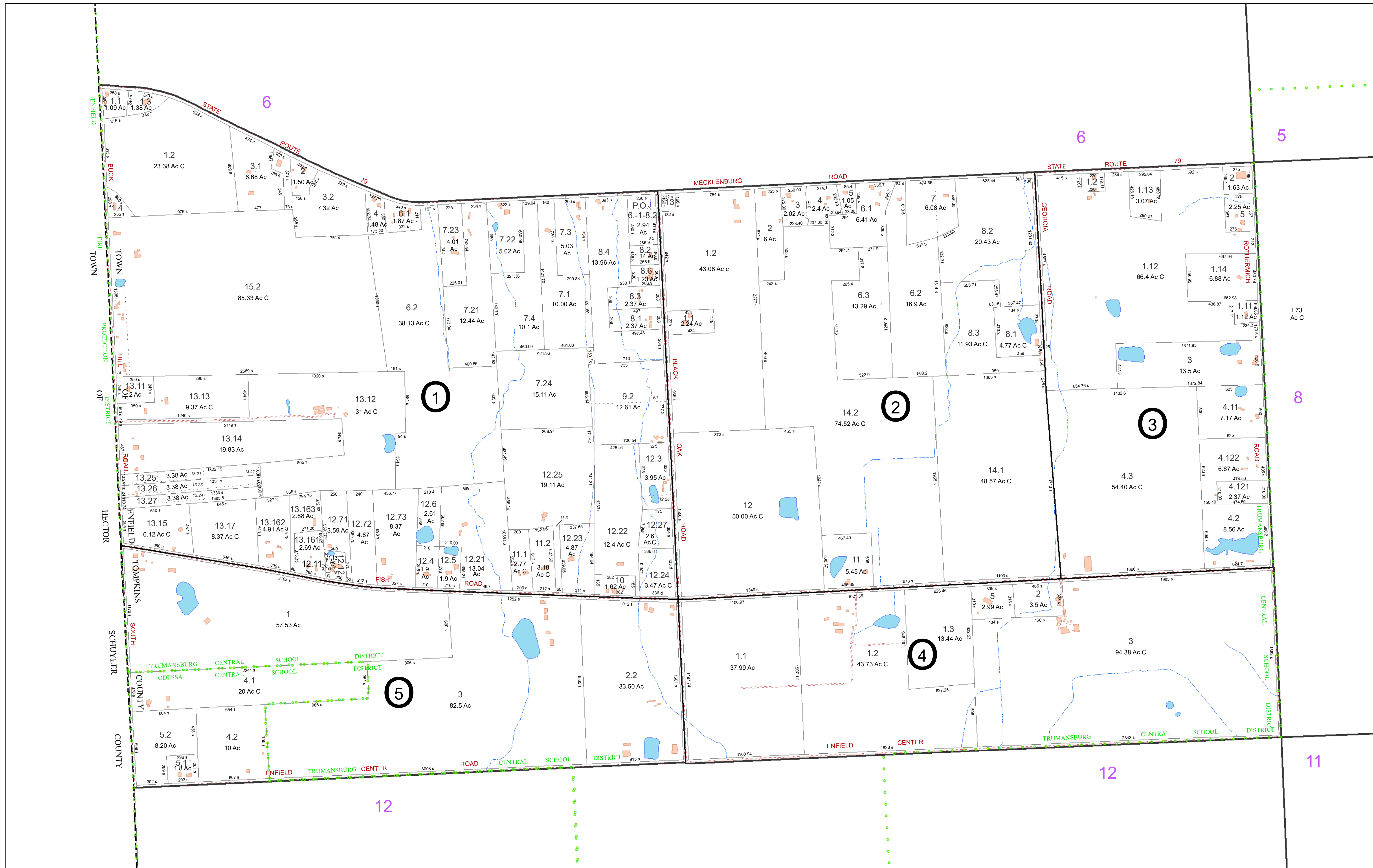
- Parcel Connector
- Property Line
- Former Property Line
- Current Year Changes
- Block Limit
- External Tax Map
- Block Number

	Parcel Lot Number
43.1	Previous Lot Number
3.12	Subdivision Lot Number
4.3	Deed/Survey Acreage
5.6 Ac	Computed Acreage
2.11 Ac C	Grouped (Total) Acreage
18.50 Ac C	Scaled (Calculated) Acreage
100s	Deed Dimension
100d	

TOWN OF ENFIELD
TOMPKINS COUNTY, N.Y.



MAP: 5
SCALE: 1" = 400'
(When plotted on Arch D Media)
11 x 17" (47%), scale is 1" = 800'
MAP REVISED: 1-JULY-2022
MAP PRINTED: 1-JULY-2022



FOR TAX PURPOSES ONLY
NOT TO BE USED FOR CONVEYANCE

All tax maps are referenced to the New York State Plane Central Coordinate System using the 1983 North American Datum. Property lines have been registered to 1991-92 Tompkins County Digital Planimetric Base Map, and, as a result, dimensions and acreages may vary from legal descriptions. For complete legal descriptions or conveyances, please refer to the appropriate deeds and surveys.

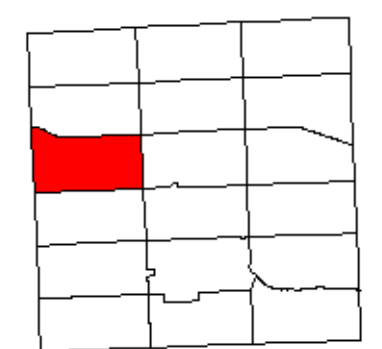
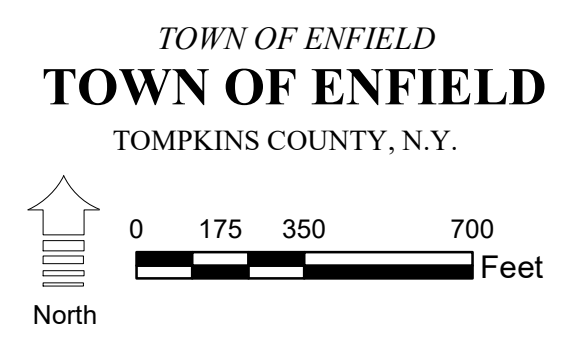
NOTICE OF DISCLAIMER
This map represents a compilation of graphical and textual information from deeds and surveys, a digital planimetric base map, and digital conversion of hand-drawn mylar maps. Errors and omissions can occur from each of these sources; each source represents a large number of records and originators of information. As a practical matter, the County does not warrant the accuracy or completeness of the information portrayed. The end user of these maps agrees to accept the data "as is" with the full knowledge that errors and omissions may exist, and to hold harmless the County for any damages that may result from an inappropriate use of these maps.

SPECIAL DISTRICT INFORMATION
Trumansburg Central School District
Odessa-Montour Central School District
Enfield Fire Protection District

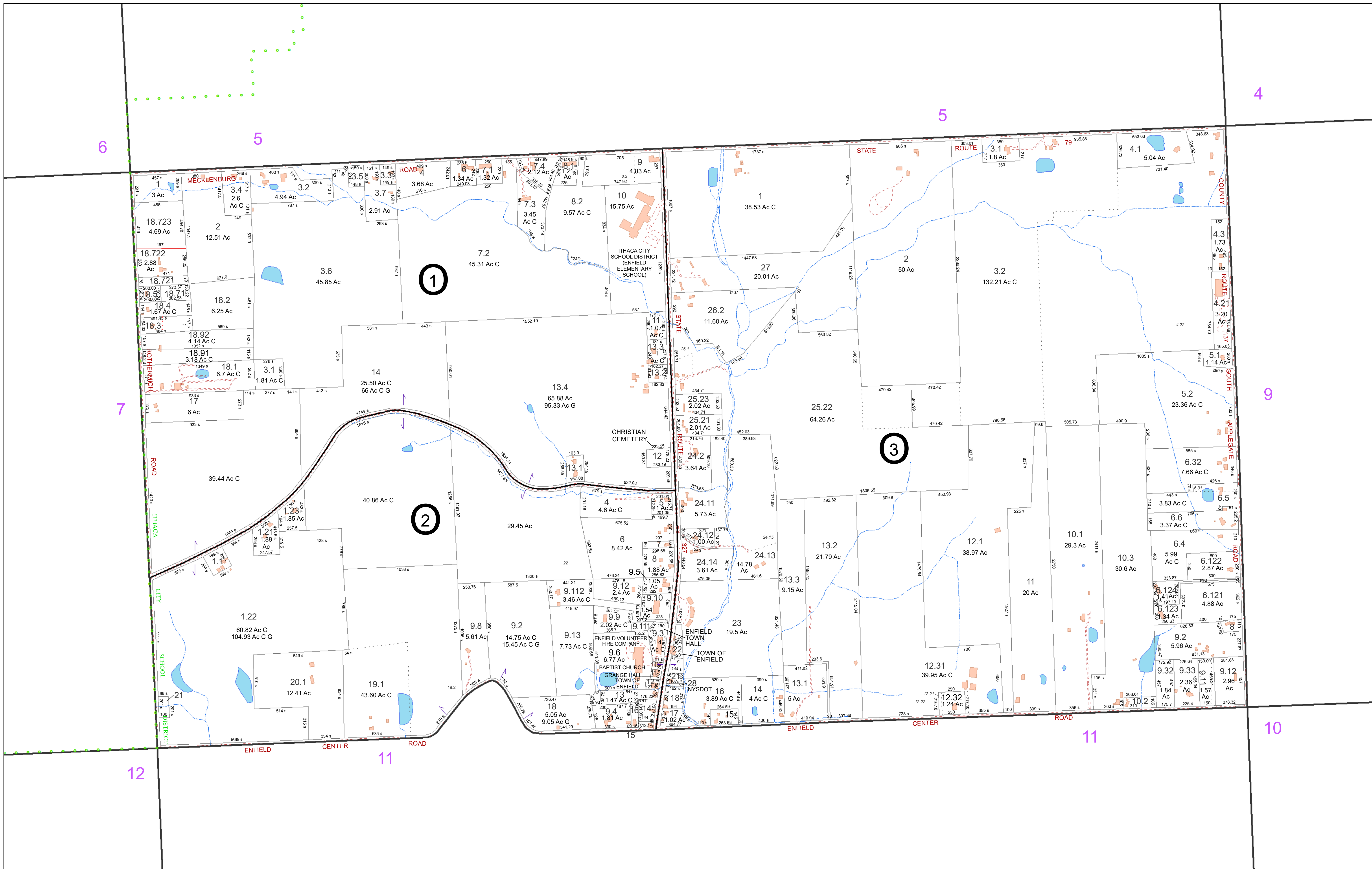
- Building Footprint (1991-2022)
- Curb/Pavement Line
- Railroad
- Hydrography
- Special Districts
- Municipality
- Military Tract/Watkins & Flint Lot Number

- LEGEND**
- Parcel Connector
 - Property Line
 - Former Property Line
 - Current Year Changes
 - Block Limit
 - External Tax Map
 - Block Number

- 43.1** Parcel Lot Number
- 3 12** Previous Lot Number
- 4 3** Subdivision Lot Number
- 5.6 Ac** Deed/Survey Acreage
- 2.11 Ac C** Computed Acreage
- 18.50 Ac C** Grouped (Total) Acreage
- 100s** Scaled (Calculated) Acreage
- 100d** Deed Dimension



MAP: 7
SCALE: 1" = 400'
(When plotted on Arch D Media)
11 x 17" (47%), scale is 1" = 800'
MAP REVISED: 1-JULY-2022
MAP PRINTED: 1-JULY-2022



FOR TAX PURPOSES ONLY
NOT TO BE USED FOR CONVEYANCE
 All tax maps are referenced to the New York State Plane Central Coordinate System using the 1983 North American Datum. Property lines have been registered to 1991-92 Tompkins County Digital Planimetric Base Map, and, as a result, dimensions and acreages may vary from legal descriptions. For complete legal descriptions or conveyances, please refer to the appropriate deeds and surveys.

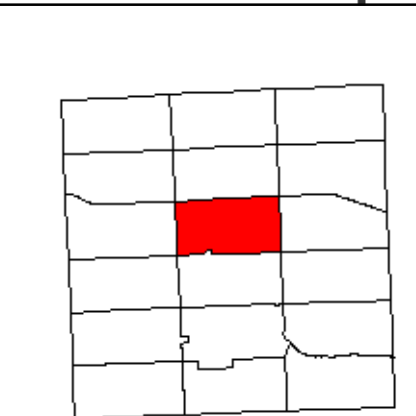
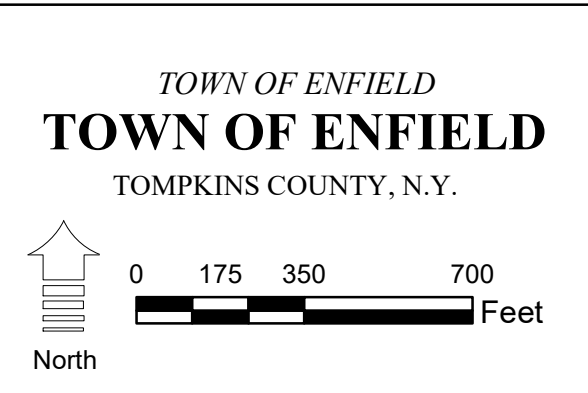
NOTICE OF DISCLAIMER
 This map represents a compilation of graphical and textual information from deeds and surveys, a digital planimetric base map, and digital conversion of hand-drawn mylar maps. Errors and omissions can occur from each of these sources, each source represents a large number of records and originators of information. As a practical matter, the County does not warrant the accuracy or completeness of the information portrayed. The end user of these maps agrees to accept the data "as is" with the full knowledge that errors and omissions may exist, and to hold harmless the County for any damages that may result from an inappropriate use of these maps.

SPECIAL DISTRICT INFORMATION
 Ithaca City School District
 Enfield Fire Protection District

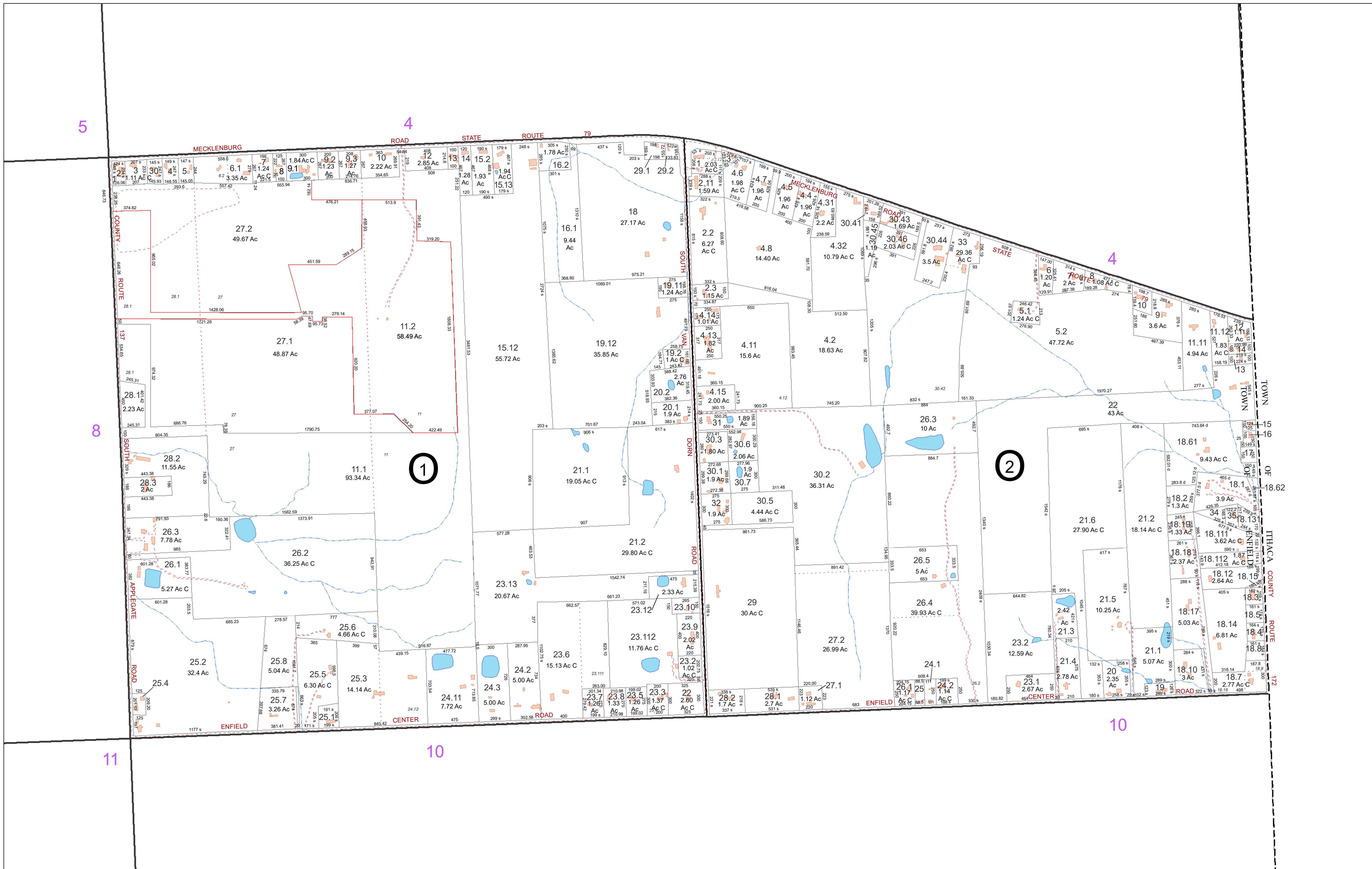
- LEGEND**
- Building Footprint (1991-2022)
 - Curb/Pavement Line
 - Railroad
 - Hydrography
 - Special Districts
 - Municipality
 - Military Tract/Watkins & Flint Lot Number
 - Parcel Connector
 - Property Line
 - Former Property Line
 - Current Year Changes
 - Block Limit
 - External Tax Map
 - Block Number

43.1	Parcel Lot Number
3.12	Previous Lot Number
4.3	Subdivision Lot Number
5.6 Ac	Deed/Survey Acreage
2.11 Ac C	Computed Acreage
18.50 Ac G	Grouped (Total) Acreage
100s	Scaled (Calculated) Acreage
100d	Deed Dimension

43.1	Parcel Lot Number
3.12	Previous Lot Number
4.3	Subdivision Lot Number
5.6 Ac	Deed/Survey Acreage
2.11 Ac C	Computed Acreage
18.50 Ac G	Grouped (Total) Acreage
100s	Scaled (Calculated) Acreage
100d	Deed Dimension



MAP: 8
 SCALE: 1" = 400'
 (When plotted on Arch D Media)
 11 x 17" (47%), scale is 1" = 800'
 MAP REVISED: 1-JULY-2022
 MAP PRINTED: 1-JULY-2022



FOR TAX PURPOSES ONLY
 NOT TO BE USED FOR CONVEYANCE

All tax maps are referenced to the New York State Plane Central Coordinate System using the 1983 North American Datum. Property lines have been registered to 1991-92 Tompkins County Digital Planimetric Base Map, and, as a result, dimensions and acreages may vary from legal descriptions. For complete legal descriptions or conveyances, please refer to the appropriate deeds and surveys.

NOTICE OF DISCLAIMER

This map represents a compilation of graphical and textual information from deeds and surveys, a digital planimetric base map, and digital conversion of hand-drawn mylar maps. Errors and omissions can occur from each of these sources; each source represents a large number of records and originators of information. As a practical matter, the County does not warrant the accuracy or completeness of the information portrayed. The end user of these maps agrees to accept the data "as is" with the full knowledge that errors and omissions may exist, and to hold harmless the County for any damages that may result from an inappropriate use of these maps.

SPECIAL DISTRICT INFORMATION

Ithaca City School District
 Enfield Fire Protection District

- Building Footprint (1991-2022)
- Curb/Pavement Line
- Railroad
- Hydrography
- Special Districts
- Municipality
- Military Tract/Watkins & Flint Lot Number

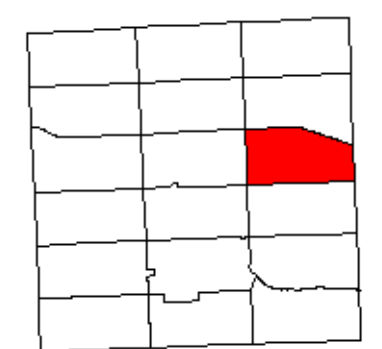
- LEGEND**
- Parcel Connector
 - Property Line
 - Former Property Line
 - Current Year Changes
 - Block Limit
 - External Tax Map
 - Block Number

- 43.1** Parcel Lot Number
- 3 12** Previous Lot Number
- 4 3** Subdivision Lot Number
- 5.6 Ac** Deed/Survey Acreage
- 2.11 Ac C** Computed Acreage
- 18.50 Ac G** Grouped (Total) Acreage
- 100s** Scaled (Calculated) Acreage
- 100d** Deed Dimension

TOWN OF ENFIELD
 TOMPKINS COUNTY, N.Y.

0 175 350 700 Feet

North

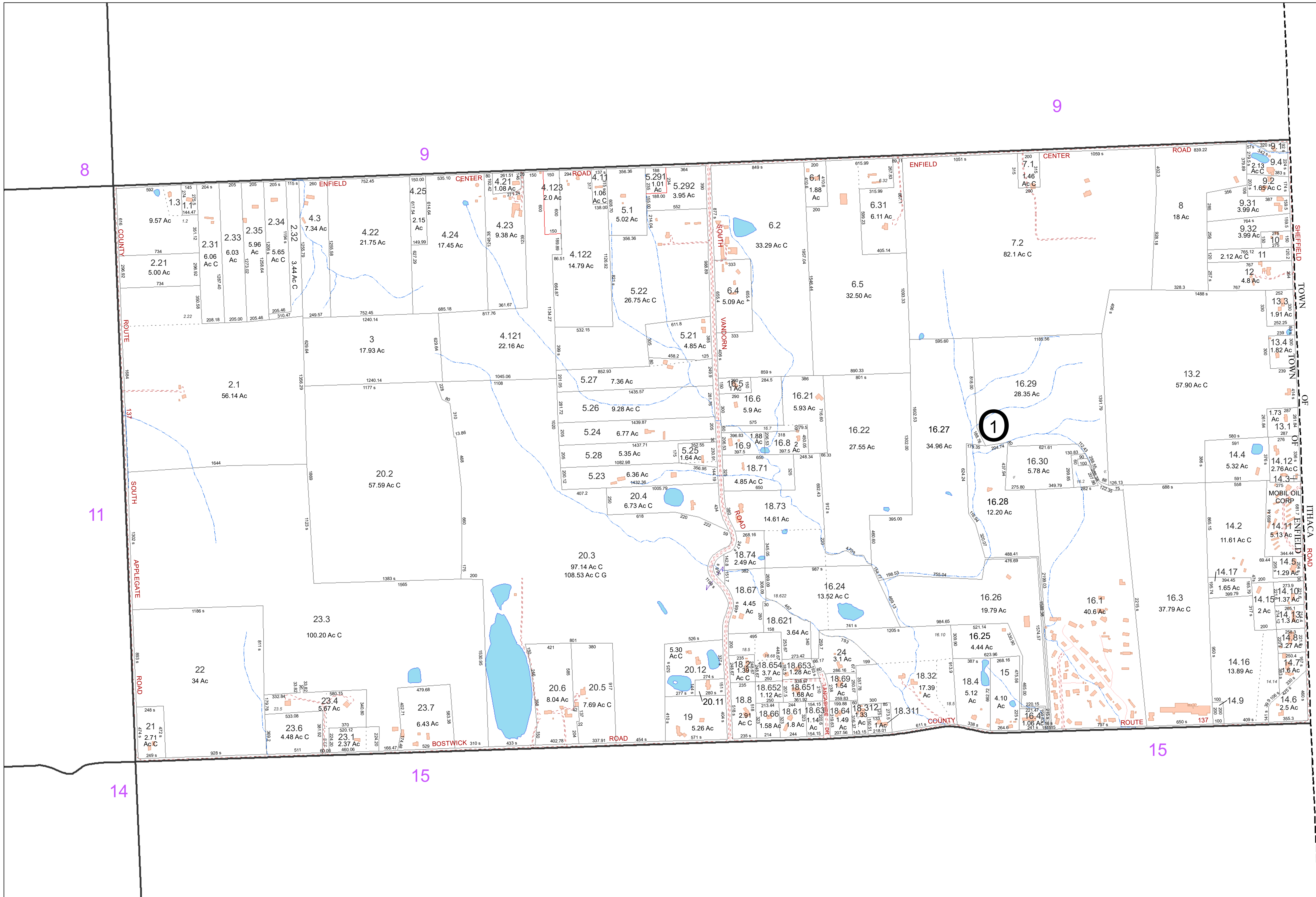


MAP: 9

SCALE: 1" = 400'

(When plotted on Arch D Media)
 11 x 17" (47%), scale is 1" = 800'

MAP REVISED: 1-JULY-2022
 MAP PRINTED: 1-JULY-2022



FOR TAX PURPOSES ONLY
NOT TO BE USED FOR CONVEYANCE

All tax maps are referenced to the New York State Plane Central Coordinate System using the 1983 North American Datum. Property lines have been registered to 1991-92 Tompkins County Digital Planimetric Base Map, and, as a result, dimensions and acreages may vary from legal descriptions. For complete legal descriptions or conveyances, please refer to the appropriate deeds and surveys.

NOTICE OF DISCLAIMER
This map represents a compilation of graphical and textual information from deeds and surveys, a digital planimetric base map, and digital conversion of hand-drawn mylar maps. Errors and omissions can occur from each of these sources; each source represents a large number of records and originators of information. As a practical matter, the County does not warrant the accuracy or completeness of the information portrayed. The end user of these maps agrees to accept the data "as is" with the full knowledge that errors and omissions may exist, and to hold harmless the County for any damages that may result from an inappropriate use of these maps.

SPECIAL DISTRICT INFORMATION

Ithaca City School District
Enfield Fire Protection District

- Building Footprint (1991-2022)
- Curb/Pavement Line
- Railroad
- Hydrography
- Special Districts
- Municipality
- Military Tract/Watkins & Flint Lot Number

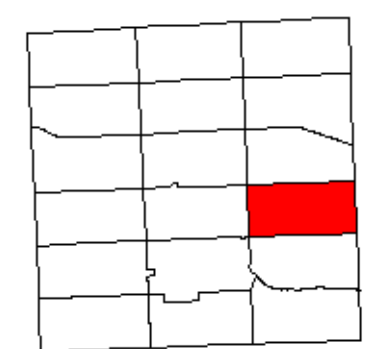
- Parcel Connector
- Property Line
- Former Property Line
- Current Year Changes
- Block Limit
- External Tax Map
- Block Number

LEGEND

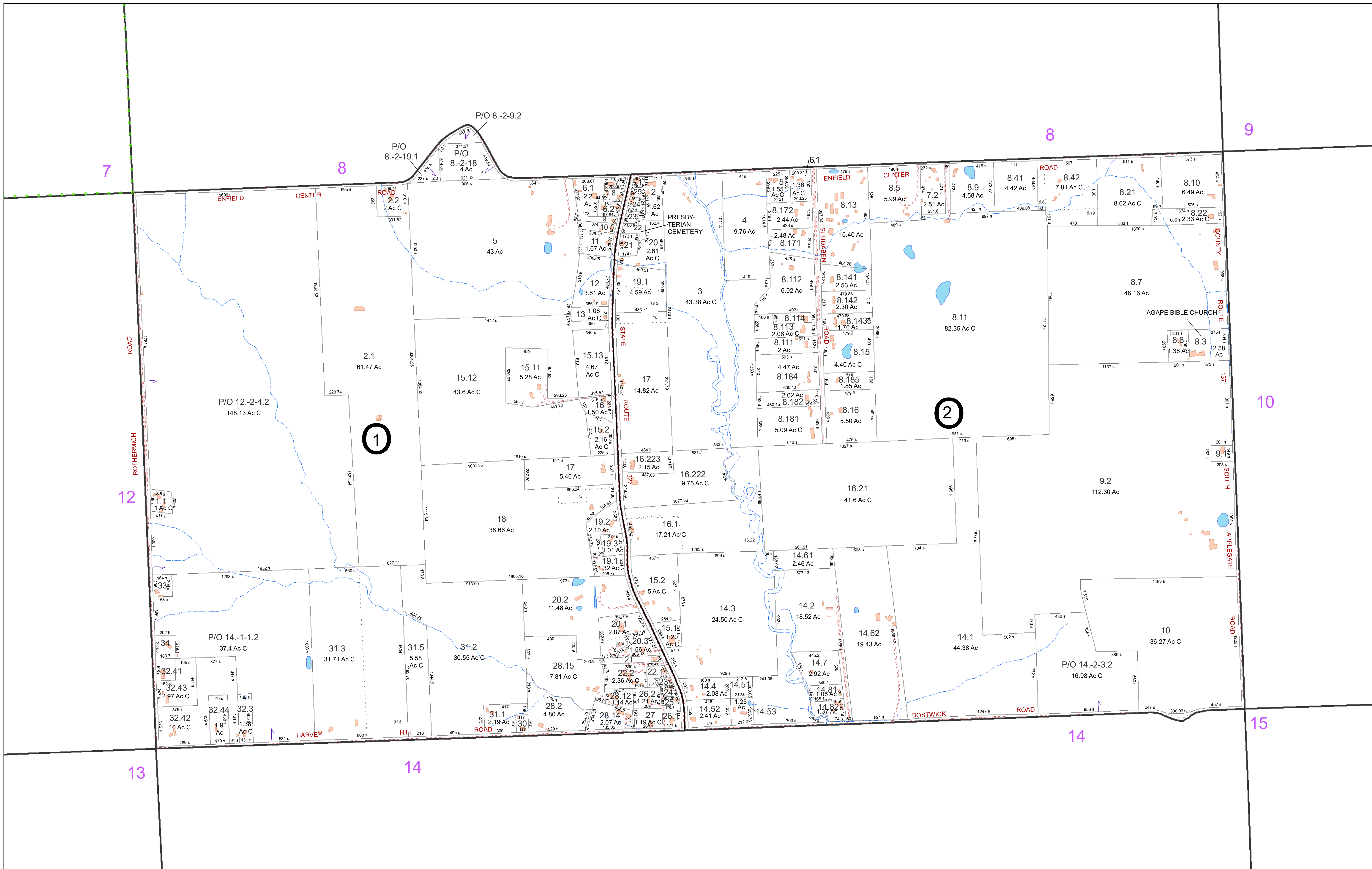
- 43.1 Parcel Lot Number
- 3.12 Previous Lot Number
- 4.3 Subdivision Lot Number
- 5.6 Ac Deed/Survey Acreage
- 2.11 Ac C Computed Acreage
- 18.50 Ac C Grouped (Total) Acreage
- 100s Scaled (Calculated) Acreage
- 100d Deed Dimension

TOWN OF ENFIELD
TOMPKINS COUNTY, N.Y.

North



MAP: 10
SCALE: 1" = 400'
(When plotted on Arch D Media)
11 x 17" (47%), scale is 1" = 800'
MAP REVISED: 1-JULY-2022
MAP PRINTED: 1-JULY-2022



FOR TAX PURPOSES ONLY
NOT TO BE USED FOR CONVEYANCE

All tax maps are referenced to the New York State Plane Central Coordinate System using the 1983 North American Datum. Property lines have been registered to 1991-92 Tompkins County Digital Planimetric Base Map, and, as a result, dimensions and acreages may vary from legal descriptions. For complete legal descriptions or conveyances, please refer to the appropriate deeds and surveys.

NOTICE OF DISCLAIMER
This map represents a compilation of graphical and textual information from deeds and surveys, a digital planimetric base map, and digital conversion of hand-drawn mylar maps. Errors and omissions can occur from each of these sources, each source represents a large number of records and originators of information. As a practical matter, the County does not warrant the accuracy or completeness of the information portrayed. The end user of these maps agrees to accept the data "as is" with the full knowledge that errors and omissions may exist, and to hold harmless the County for any damages that may result from an inappropriate use of these maps.

SPECIAL DISTRICT INFORMATION

Ithaca City School District
Enfield Fire Protection District

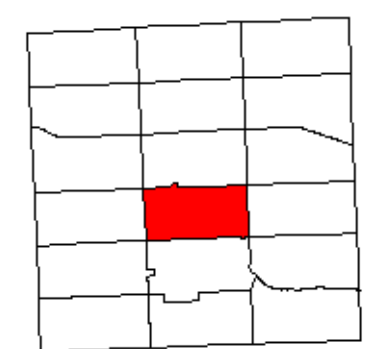
- Building Footprint (1991-2022)
- Curb/Pavement Line
- Railroad
- Hydrography
- Special Districts
- Municipality
- Military Tract/Watkins & Flint Lot Number

- Parcel Connector
- Property Line
- Former Property Line
- Current Year Changes
- Block Limit
- External Tax Map
- Block Number

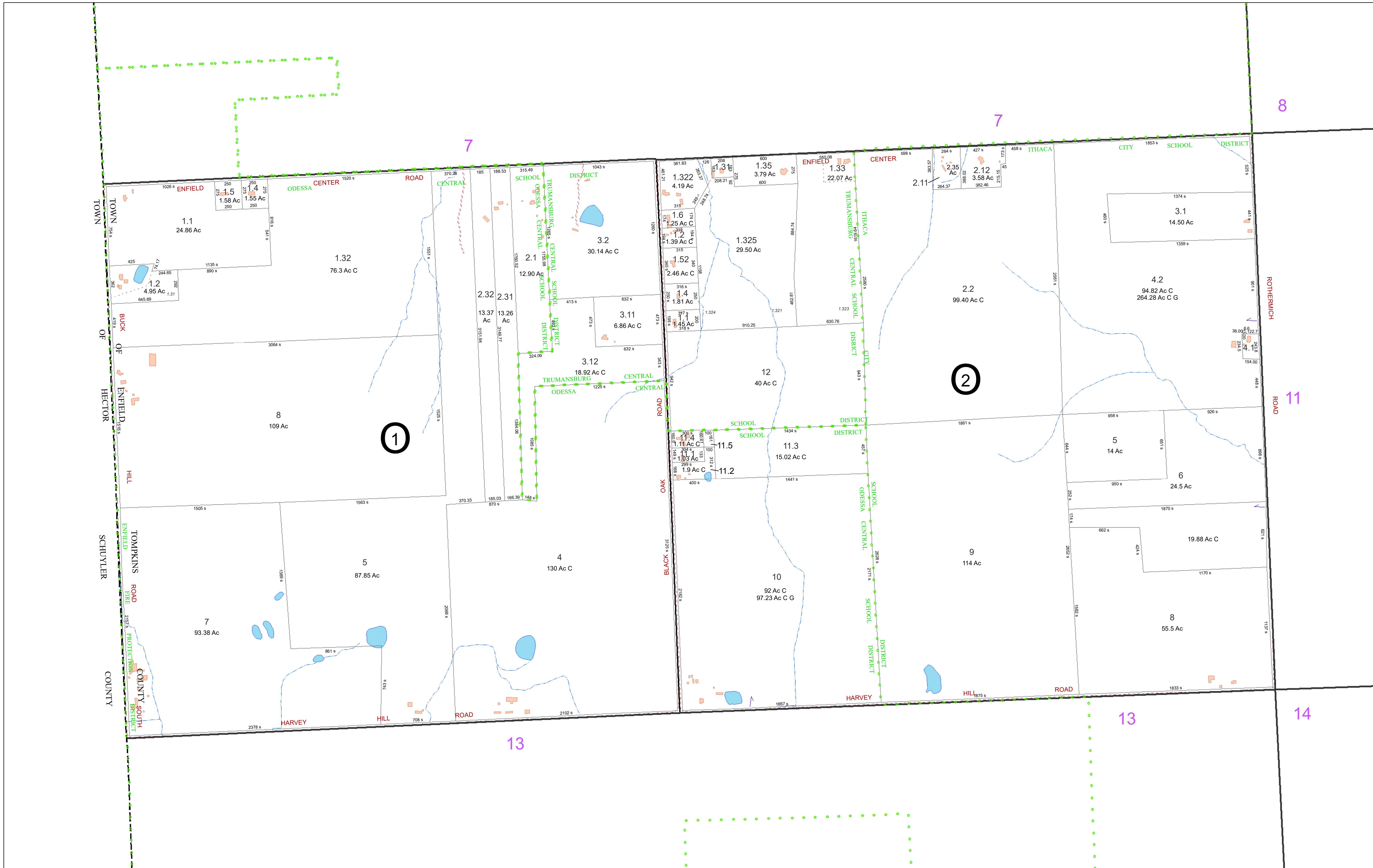
- 43.1** Parcel Lot Number
- 3 12** Previous Lot Number
- 4.3** Subdivision Lot Number
- 5.6 Ac** Deed/Survey Acreage
- 2.11 Ac C** Computed Acreage
- 18.50 Ac C** Grouped (Total) Acreage
- 100s** Scaled (Calculated) Acreage
- 100d** Deed Dimension

TOWN OF ENFIELD
TOMPKINS COUNTY, N.Y.

0 175 350 700 Feet



MAP: 11
SCALE: 1" = 400'
(When plotted on Arch D Media)
11 x 17" (47%), scale is 1" = 800'
MAP REVISED: 1-JULY-2022
MAP PRINTED: 1-JULY-2022



FOR TAX PURPOSES ONLY
NOT TO BE USED FOR CONVEYANCE
 All tax maps are referenced to the New York State Plane Central Coordinate System using the 1983 North American Datum. Property lines have been registered to 1991-92 Tompkins County Digital Planimetric Base Map, and, as a result, dimensions and acreages may vary from legal descriptions. For complete legal descriptions or conveyances, please refer to the appropriate deeds and surveys.

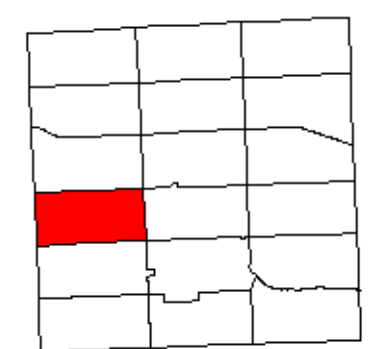
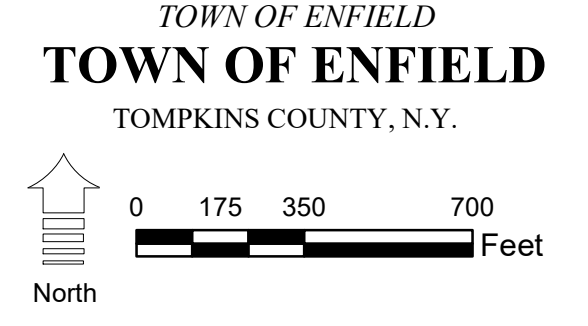
NOTICE OF DISCLAIMER
 This map represents a compilation of graphical and textual information from deeds and surveys, a digital planimetric base map, and digital conversion of hand-drawn mylar maps. Errors and omissions can occur from each of these sources; each source represents a large number of records and originators of information. As a practical matter, the County does not warrant the accuracy or completeness of the information portrayed. The end user of these maps agrees to accept the data "as is" with the full knowledge that errors and omissions may exist, and to hold harmless the County for any damages that may result from an inappropriate use of these maps.

SPECIAL DISTRICT INFORMATION
 Ithaca City School District
 Odessa-Montour Central School District
 Trumansburg Central School District
 Enfield Fire Protection District

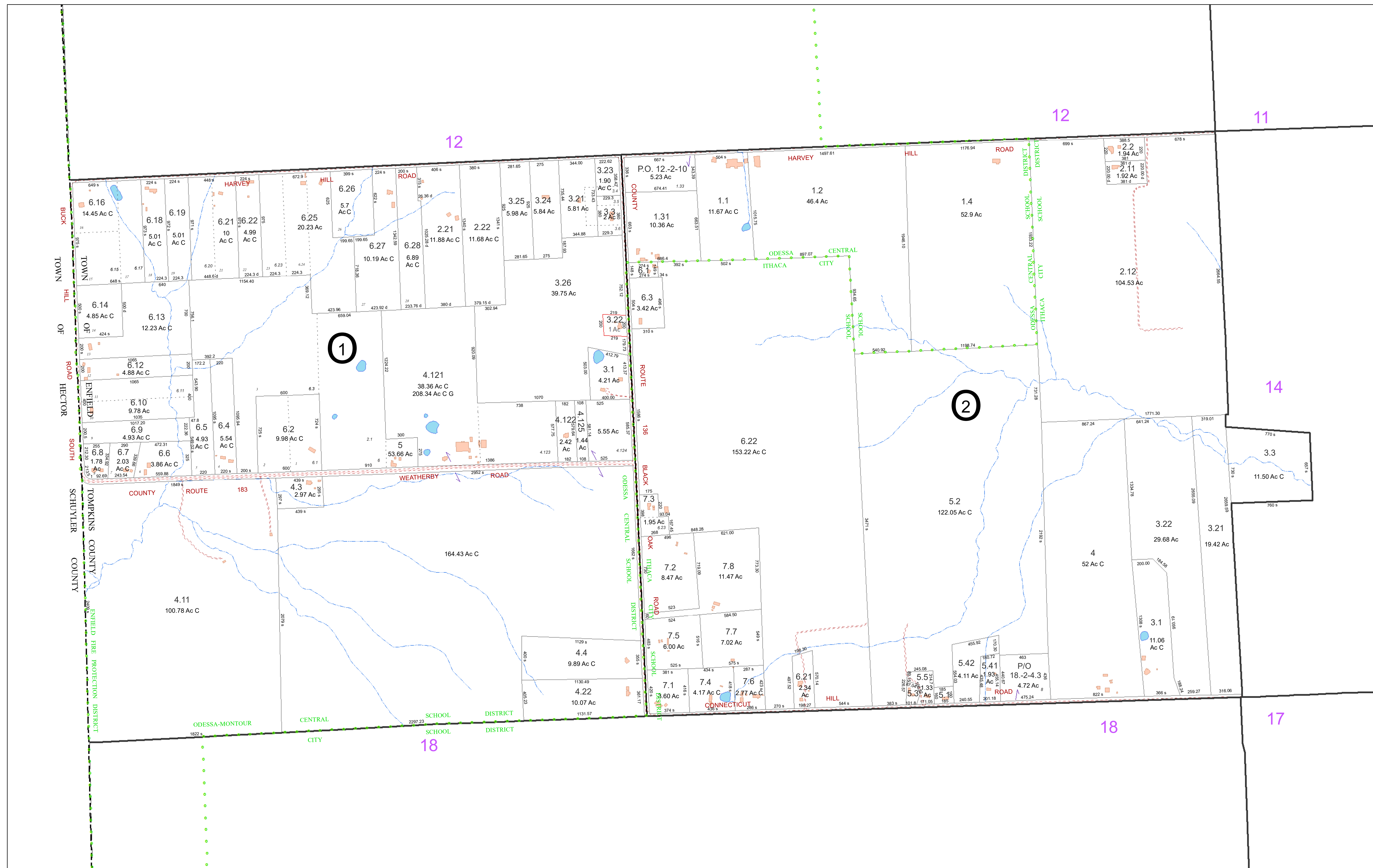
- LEGEND**
- Building Footprint (1991-2022)
 - Curb/Pavement Line
 - Railroad
 - Hydrography
 - Special Districts
 - Municipality
 - Military Tract/Watkins & Flint Lot Number
 - Parcel Connector
 - Property Line
 - Former Property Line
 - Current Year Changes
 - Block Limit
 - External Tax Map
 - Block Number

Parcel Lot Number	Previous Lot Number	Subdivision Lot Number	Deed/Survey Acreage	Computed Acreage	Grouped (Total) Acreage	Scaled (Calculated) Acreage	Deed Dimension
43.1	3 12	4 3	5.6 Ac	2.11 Ac C	18.50 Ac G	100s	100d

TOWN OF ENFIELD
 TOMPKINS COUNTY, N.Y.



MAP: 12
 SCALE: 1" = 400'
 (When plotted on Arch D Media)
 11 x 17" (47%), scale is 1" = 800'
 MAP REVISED: 1-JULY-2022
 MAP PRINTED: 1-JULY-2022



FOR TAX PURPOSES ONLY
NOT TO BE USED FOR CONVEYANCE

All tax maps are referenced to the New York State Plane Central Coordinate System using the 1983 North American Datum. Property lines have been registered to 1991-92 Tompkins County Digital Planimetric Base Map, and, as a result, dimensions and acreages may vary from legal descriptions. For complete legal descriptions or conveyances, please refer to the appropriate deeds and surveys.

NOTICE OF DISCLAIMER

This map represents a compilation of graphical and textual information from deeds and surveys, a digital planimetric base map, and digital conversion of hand-drawn mylar maps. Errors and omissions can occur from each of these sources; each source represents a large number of records and originators of information. As a practical matter, the County does not warrant the accuracy or completeness of the information portrayed. The end user of these maps agrees to accept the data "as is" with the full knowledge that errors and omissions may exist, and to hold harmless the County for any damages that may result from an inappropriate use of these maps.

SPECIAL DISTRICT INFORMATION

Ithaca City School District
Odessa-Montour Central School District
Enfield Fire Protection District

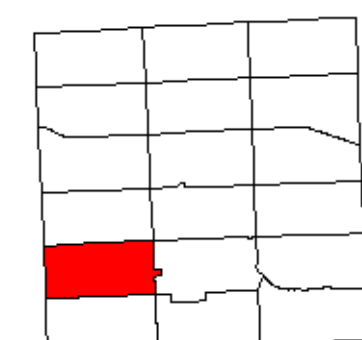
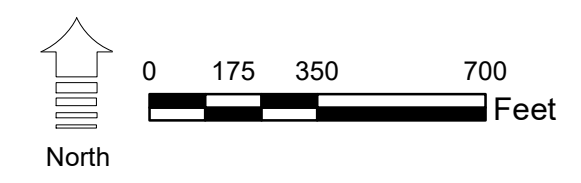
- Building Footprint (1991-2022)
- Curb/Pavement Line
- Railroad
- Hydrography
- Special Districts
- Municipality
- Military Tract/Watkins & Flint Lot Number

LEGEND

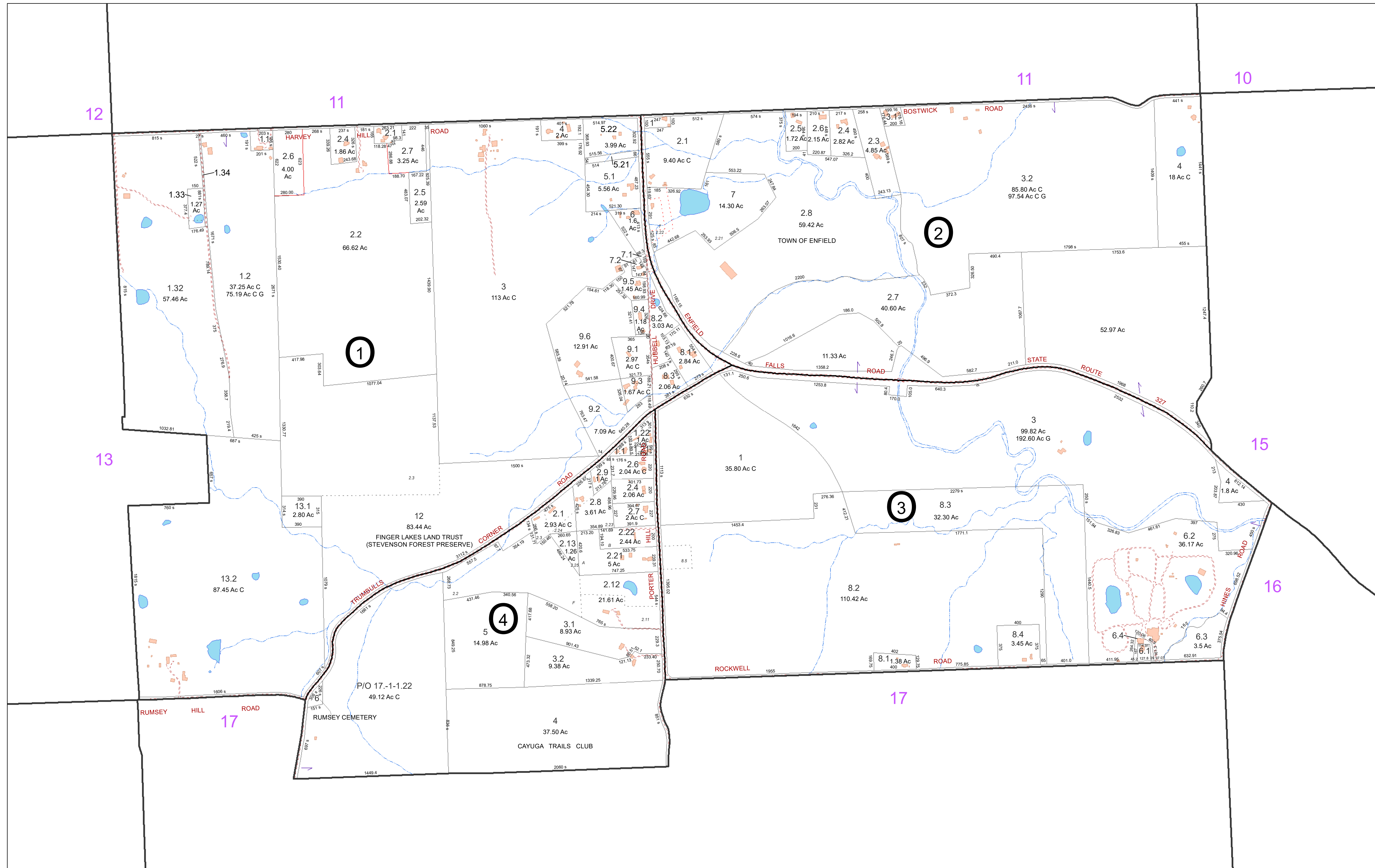
- Parcel Connector
- Property Line
- Former Property Line
- Current Year Changes
- Block Limit
- External Tax Map
- Block Number

- 43.1** Parcel Lot Number
- 3 12** Previous Lot Number
- 4.3** Subdivision Lot Number
- 5.6 Ac** Deed/Survey Acreage
- 2.11 Ac C** Computed Acreage
- 18.50 Ac G** Grouped (Total) Acreage
- 100s** Scaled (Calculated) Acreage
- 100d** Deed Dimension

TOWN OF ENFIELD
TOMPKINS COUNTY, N.Y.



MAP: 13
SCALE: 1" = 400'
(When plotted on Arch D Media)
11 x 17" (47%), scale is 1" = 800'
MAP REVISED: 1-JULY-2022
MAP PRINTED: 1-JULY-2022



FOR TAX PURPOSES ONLY
NOT TO BE USED FOR CONVEYANCE

All tax maps are referenced to the New York State Plane Central Coordinate System using the 1983 North American Datum. Property lines have been registered to 1991-92 Tompkins County Digital Planimetric Base Map, and, as a result, dimensions and acreages may vary from legal descriptions. For complete legal descriptions or conveyances, please refer to the appropriate deeds and surveys.

NOTICE OF DISCLAIMER

This map represents a compilation of graphical and textual information from deeds and surveys, a digital planimetric base map, and digital conversion of hand-drawn mylar maps. Errors and omissions can occur from each of these sources; each source represents a large number of records and originators of information. As a practical matter, the County does not warrant the accuracy or completeness of the information portrayed. The end user of these maps agrees to accept the data "as is" with the full knowledge that errors and omissions may exist, and to hold harmless the County for any damages that may result from an inappropriate use of these maps.

SPECIAL DISTRICT INFORMATION

Ithaca City School District
Enfield Fire Protection District

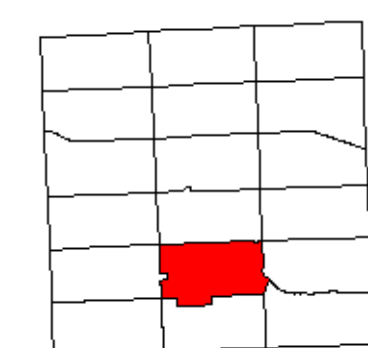
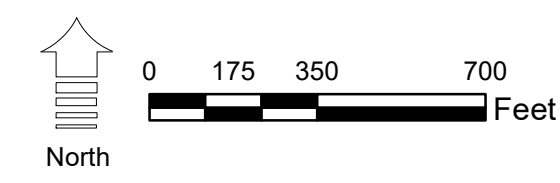
- Building Footprint (1991-2022)
- Curb/Pavement Line
- Railroad
- Hydrography
- Special Districts
- Municipality
- Military Tract/Watkins & Flint Lot Number

LEGEND

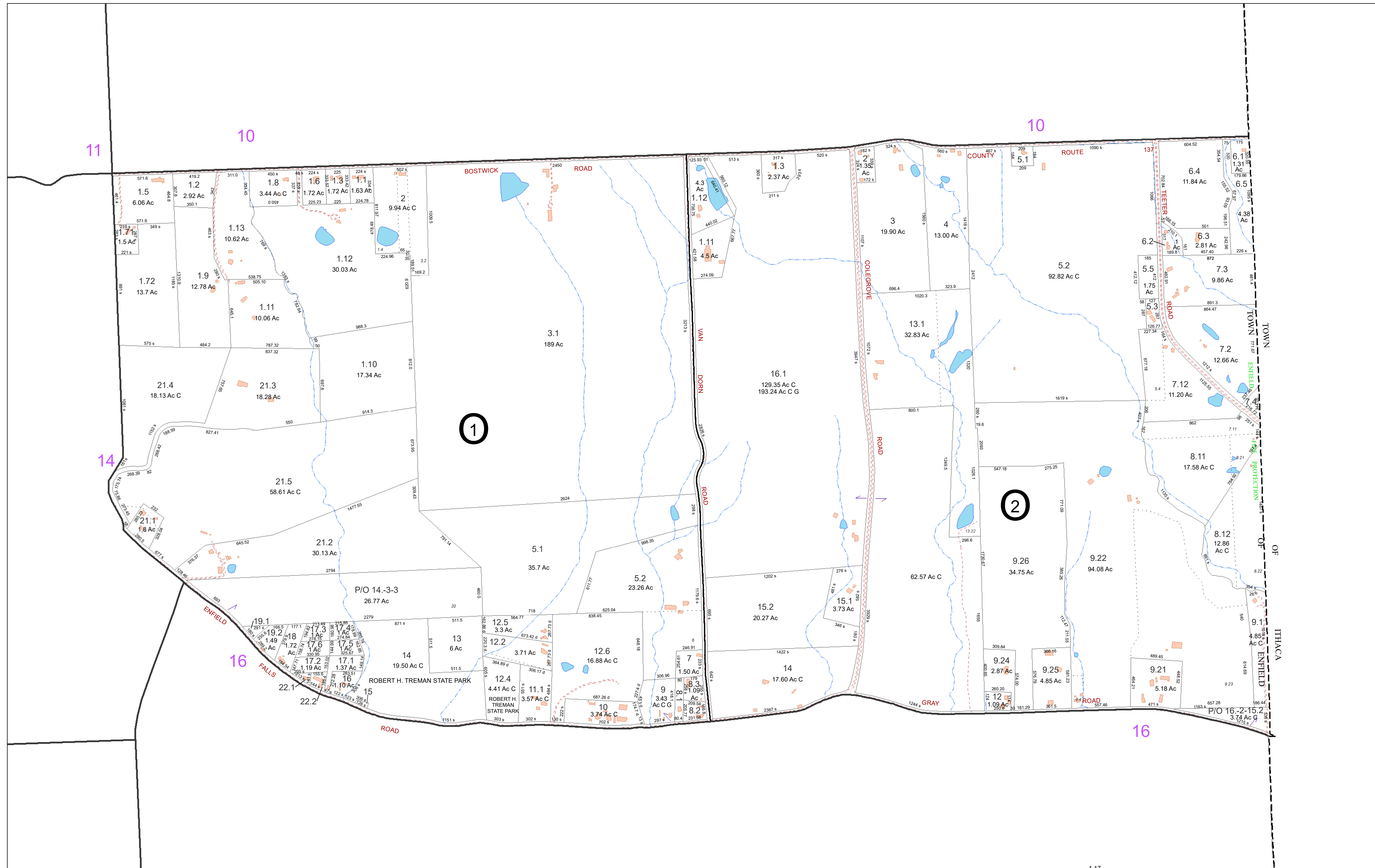
- Parcel Connector
- Property Line
- Former Property Line
- Current Year Changes
- Block Limit
- External Tax Map
- Block Number

- 43.1** Parcel Lot Number
- 3 12** Previous Lot Number
- 4.3** Subdivision Lot Number
- 5.6 Ac** Deed/Survey Acreage
- 2.11 Ac C** Computed Acreage
- 18.50 Ac G** Grouped (Total) Acreage
- 100s** Scaled (Calculated) Acreage
- 100d** Deed Dimension

TOWN OF ENFIELD
TOMPKINS COUNTY, N.Y.



MAP: 14
SCALE: 1" = 400'
(When plotted on Arch D Media)
11 x 17" (47%), scale is 1" = 800'
MAP REVISED: 1-JULY-2022
MAP PRINTED: 1-JULY-2022



FOR TAX PURPOSES ONLY
NOT TO BE USED FOR CONVEYANCE

All tax maps are referenced to the New York State Plane Central Coordinate System using the 1983 North American Datum. Property lines have been registered to 1991-92 Tompkins County Digital Planimetric Base Map, and, as a result, dimensions and acreages may vary from legal descriptions. For complete legal descriptions or conveyances, please refer to the appropriate deeds and surveys.

NOTICE OF DISCLAIMER

This map represents a compilation of graphical and textual information from deeds and surveys, a digital planimetric base map, and digital conversion of hand-drawn mylar maps. Errors and omissions can occur from each of these sources; each source represents a large number of records and originators of information. As a practical matter, the County does not warrant the accuracy or completeness of the information portrayed. The end user of these maps agrees to accept the data "as is" with the full knowledge that errors and omissions may exist, and to hold harmless the County for any damages that may result from an inappropriate use of these maps.

SPECIAL DISTRICT INFORMATION

Ithaca City School District
Newfield Central School District
Enfield Fire Protection District

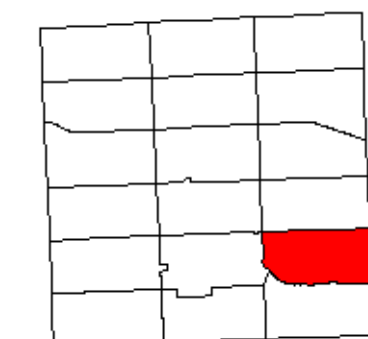
- Building Footprint (1991-2022)
- Curb/Pavement Line
- Railroad
- Hydrography
- Special Districts
- Municipality
- Military Tract/Watkins & Flint Lot Number

LEGEND

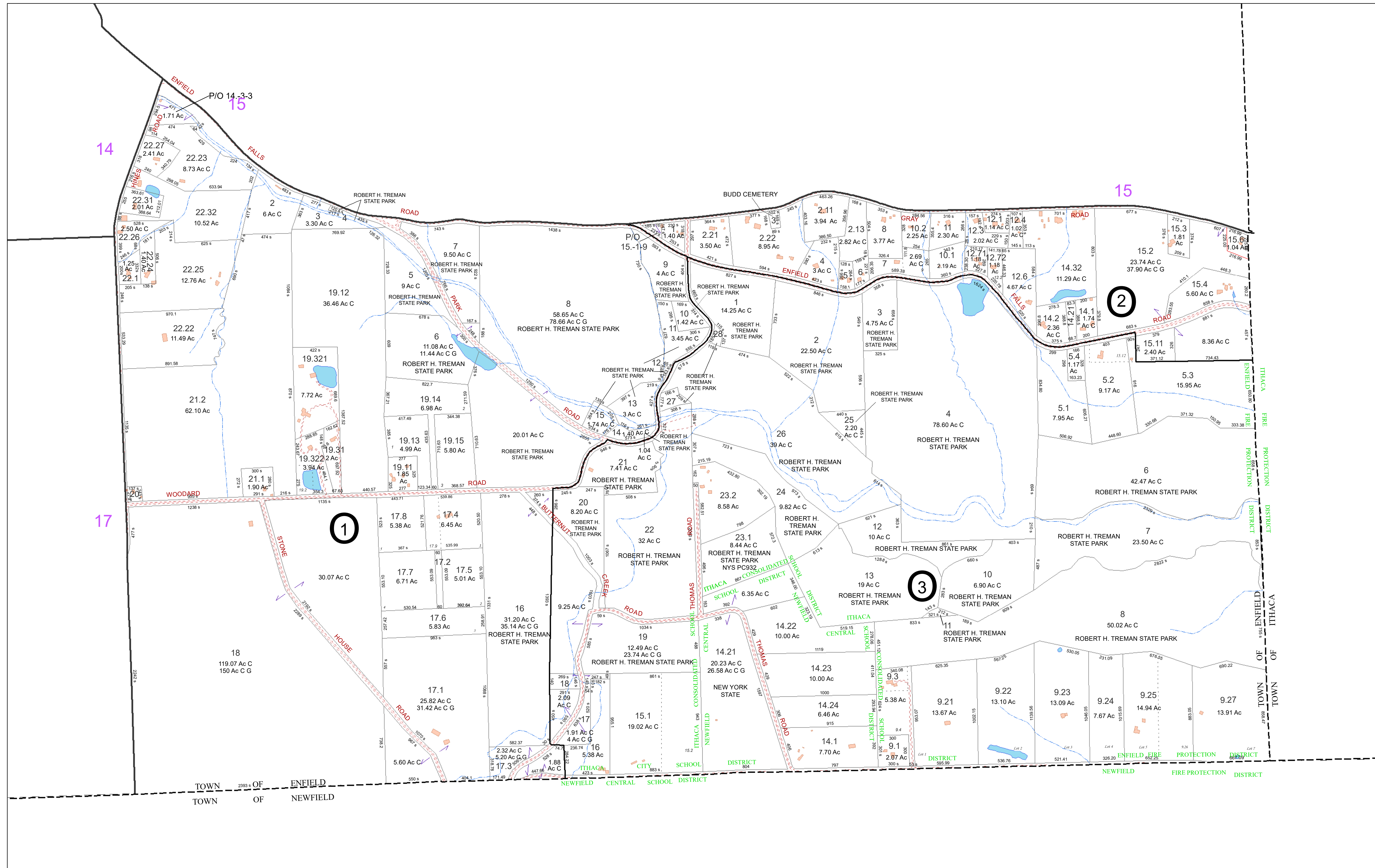
- Parcel Connector
- Property Line
- Former Property Line
- Current Year Changes
- Block Limit
- External Tax Map
- Block Number

- 43.1** Parcel Lot Number
- 3 12** Previous Lot Number
- 4.3** Subdivision Lot Number
- 5.6 Ac** Deed/Survey Acreage
- 2.11 Ac C** Computed Acreage
- 18.50 Ac G** Grouped (Total) Acreage
- 100s** Scaled (Calculated) Acreage
- 100d** Deed Dimension

TOWN OF ENFIELD
TOMPKINS COUNTY, N.Y.



MAP: 15
SCALE: 1" = 400'
(When plotted on Arch D Media)
11 x 17" (47%), scale is 1" = 800'
MAP REVISED: 1-JULY-2022
MAP PRINTED: 1-JULY-2022



FOR TAX PURPOSES ONLY
 NOT TO BE USED FOR CONVEYANCE

All tax maps are referenced to the New York State Plane Central Coordinate System using the 1983 North American Datum. Property lines have been registered to 1991-92 Tompkins County Digital Planimetric Base Map, and, as a result, dimensions and acreages may vary from legal descriptions. For complete legal descriptions or conveyances, please refer to the appropriate deeds and surveys.

NOTICE OF DISCLAIMER

This map represents a compilation of graphical and textual information from deeds and surveys, a digital planimetric base map, and digital conversion of hand-drawn mylar maps. Errors and omissions can occur from each of these sources, each source represents a large number of records and originators of information. As a practical matter, the County does not warrant the accuracy or completeness of the information portrayed. The end user of these maps agrees to accept the data "as is" with the full knowledge that errors and omissions may exist, and to hold harmless the County for any damages that may result from an inappropriate use of these maps.

SPECIAL DISTRICT INFORMATION

Enfield Fire Protection District

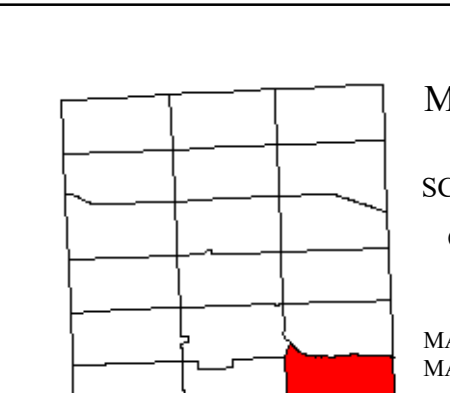
- LEGEND**
- Building Footprint (1991-2022)
 - Curb/Pavement Line
 - Railroad
 - Hydrography
 - Special Districts
 - Municipality
 - Military Tract/Watkins & Flint Lot Number
 - Parcel Connector
 - Property Line
 - Former Property Line
 - Current Year Changes
 - Block Limit
 - External Tax Map
 - Block Number

Symbol	Description
	43.1 Parcel Lot Number
	3.12 Previous Lot Number
	4.3 Subdivision Lot Number
	5.6 Ac Deed/Survey Acreage
	2.11 Ac C Computed Acreage
	18.50 Ac C Grouped (Total) Acreage
	100s Scaled (Calculated) Acreage
	100d Deed Dimension

TOWN OF ENFIELD
 TOMPKINS COUNTY, N.Y.

0 175 350 700 Feet

North

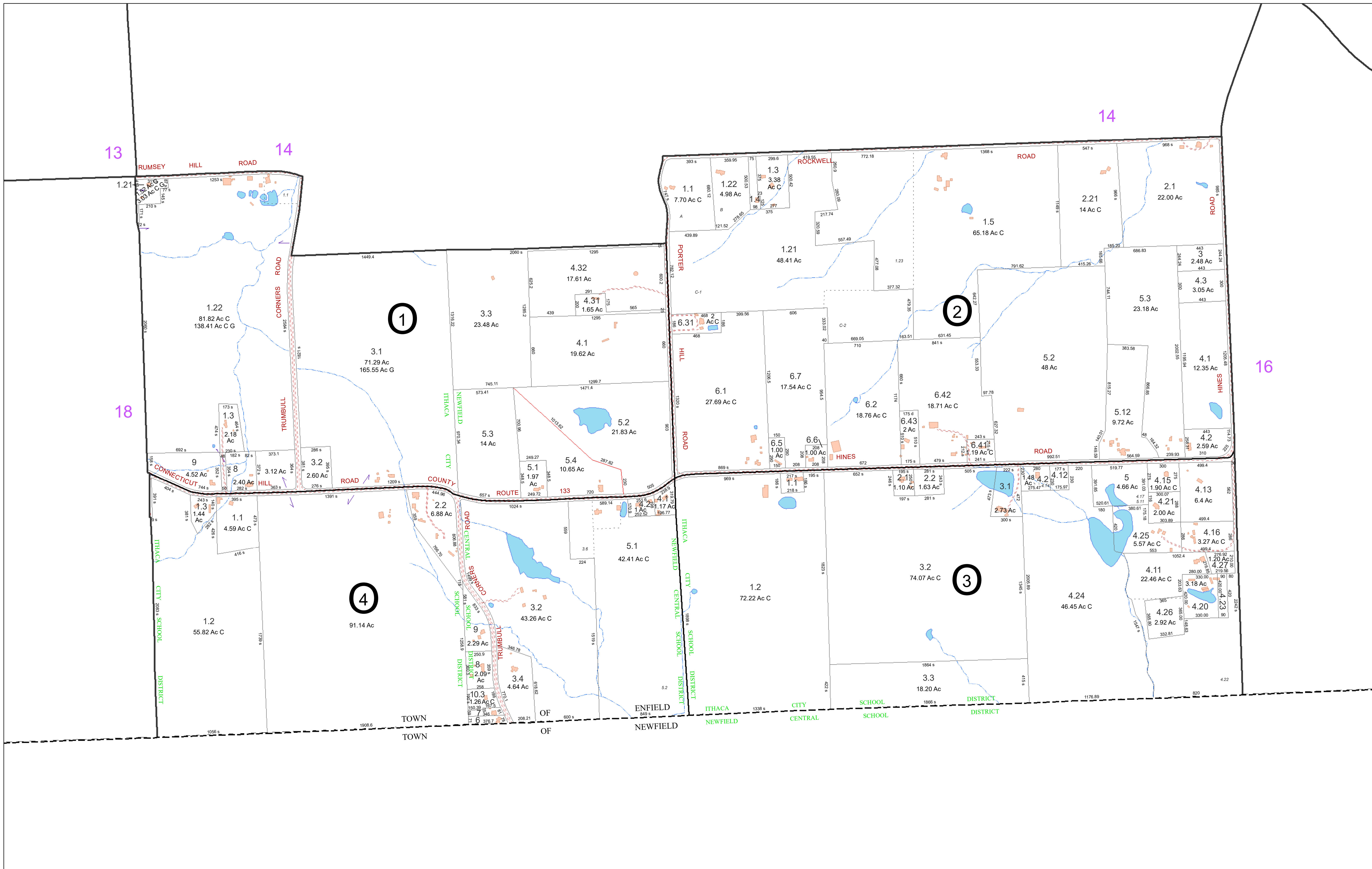


MAP: 16

SCALE: 1" = 400'

(When plotted on Arch D Media)
 11 x 17" (47%), scale is 1" = 800'

MAP REVISED: 1-JULY-2022
 MAP PRINTED: 1-JULY-2022



FOR TAX PURPOSES ONLY
 NOT TO BE USED FOR CONVEYANCE

All tax maps are referenced to the New York State Plane Central Coordinate System using the 1983 North American Datum. Property lines have been registered to 1991-92 Tompkins County Digital Planimetric Base Map, and, as a result, dimensions and acreages may vary from legal descriptions. For complete legal descriptions or conveyances, please refer to the appropriate deeds and surveys.

NOTICE OF DISCLAIMER

This map represents a compilation of graphical and textual information from deeds and surveys, a digital planimetric base map, and digital conversion of hand-drawn mylar maps. Errors and omissions can occur from each of these sources; each source represents a large number of records and originators of information. As a practical matter, the County does not warrant the accuracy or completeness of the information portrayed. The user of these maps agrees to accept the data "as is" with the full knowledge that errors and omissions may exist, and to hold harmless the County for any damages that may result from an inappropriate use of these maps.

SPECIAL DISTRICT INFORMATION

Newfield Central School
 Ithaca City School District
 Enfield Fire Protection District

- Building Footprint (1991-2022)
- Curb/Pavement Line
- Railroad
- Hydrography
- Special Districts
- Municipality
- Military Tract/Watkins & Flint Lot Number

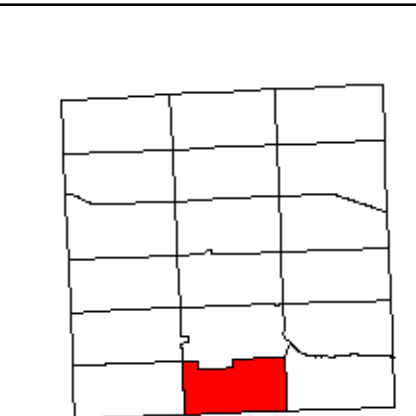
- LEGEND**
- Parcel Connector
 - Property Line
 - Former Property Line
 - Current Year Changes
 - Block Limit
 - External Tax Map
 - Block Number

- 43.1** Parcel Lot Number
- 3 12** Previous Lot Number
- 4.3** Subdivision Lot Number
- 5.6 Ac** Deed/Survey Acreage
- 2.11 Ac C** Computed Acreage
- 18.50 Ac G** Grouped (Total) Acreage
- 100s** Scaled (Calculated) Acreage
- 100d** Deed Dimension

TOWN OF ENFIELD
 TOMPKINS COUNTY, N.Y.

0 175 350 700 Feet

North

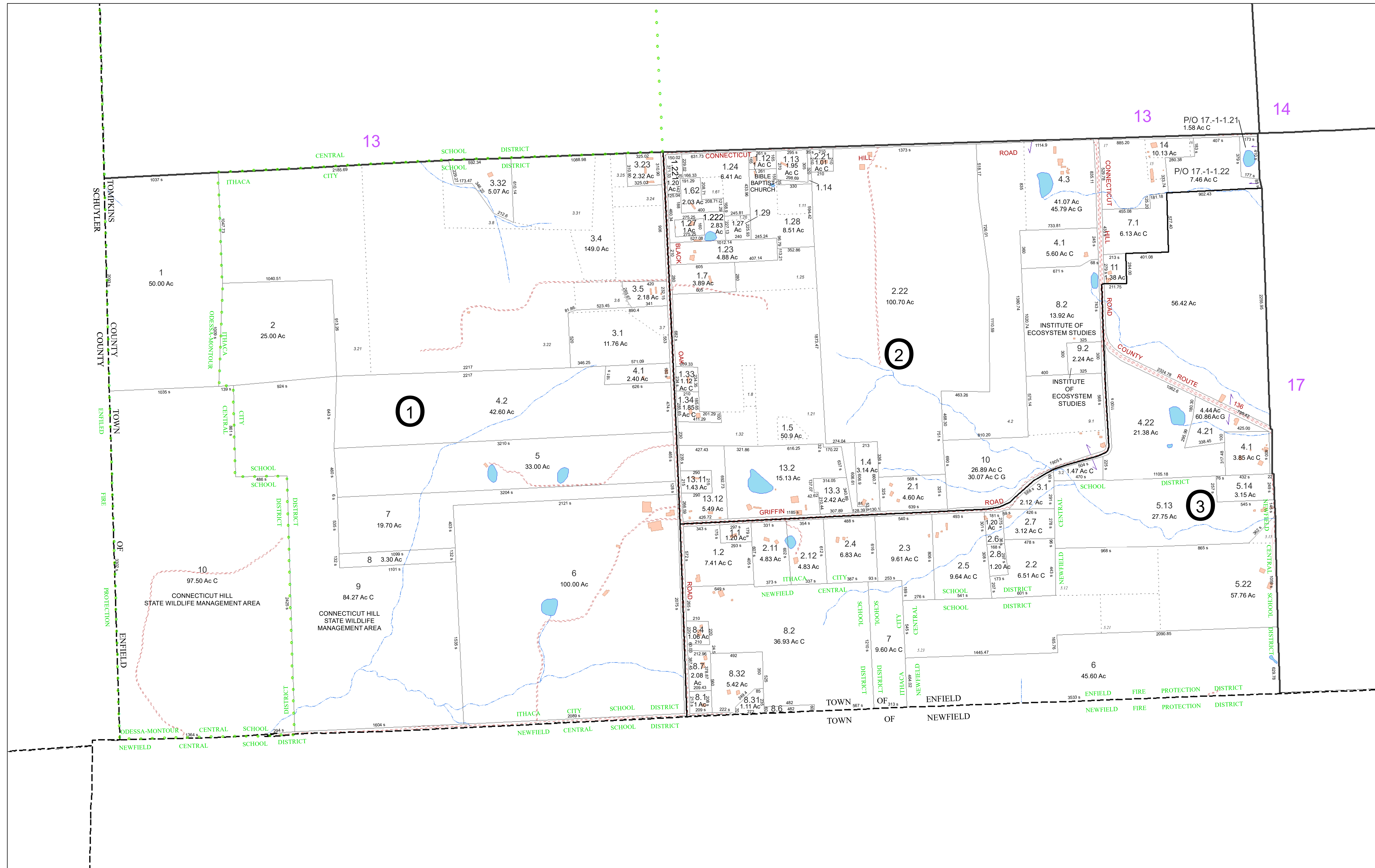


MAP: 17

SCALE: 1" = 400'

(When plotted on Arch D Media)
 11 x 17" (47%), scale is 1" = 800'

MAP REVISED: 1-JULY-2022
 MAP PRINTED: 1-JULY-2022



FOR TAX PURPOSES ONLY
NOT TO BE USED FOR CONVEYANCE
 All tax maps are referenced to the New York State Plane Central Coordinate System using the 1983 North American Datum. Property lines have been registered to 1991-92 Tompkins County Digital Planimetric Base Map, and, as a result, dimensions and acreages may vary from legal descriptions. For complete legal descriptions or conveyances, please refer to the appropriate deeds and surveys.

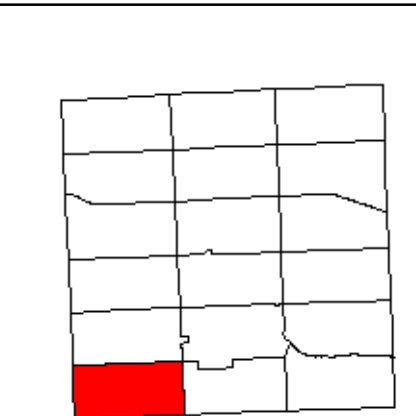
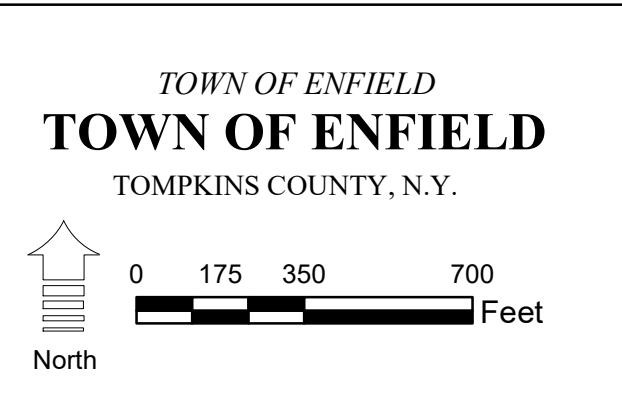
NOTICE OF DISCLAIMER
 This map represents a compilation of graphical and textual information from deeds and surveys, a digital planimetric base map, and digital conversion of hand-drawn mylar maps. Errors and omissions can occur from each of these sources, each source represents a large number of records and originators of information. As a practical matter, the County does not warrant the accuracy or completeness of the information portrayed. The end user of these maps agrees to accept the data "as is" with the full knowledge that errors and omissions may exist, and to hold harmless the County for any damages that may result from an inappropriate use of these maps.

SPECIAL DISTRICT INFORMATION
 Ithaca City School District
 Newfield Central School District
 Odessa-Montour Central School District
 Enfield Fire Protection District

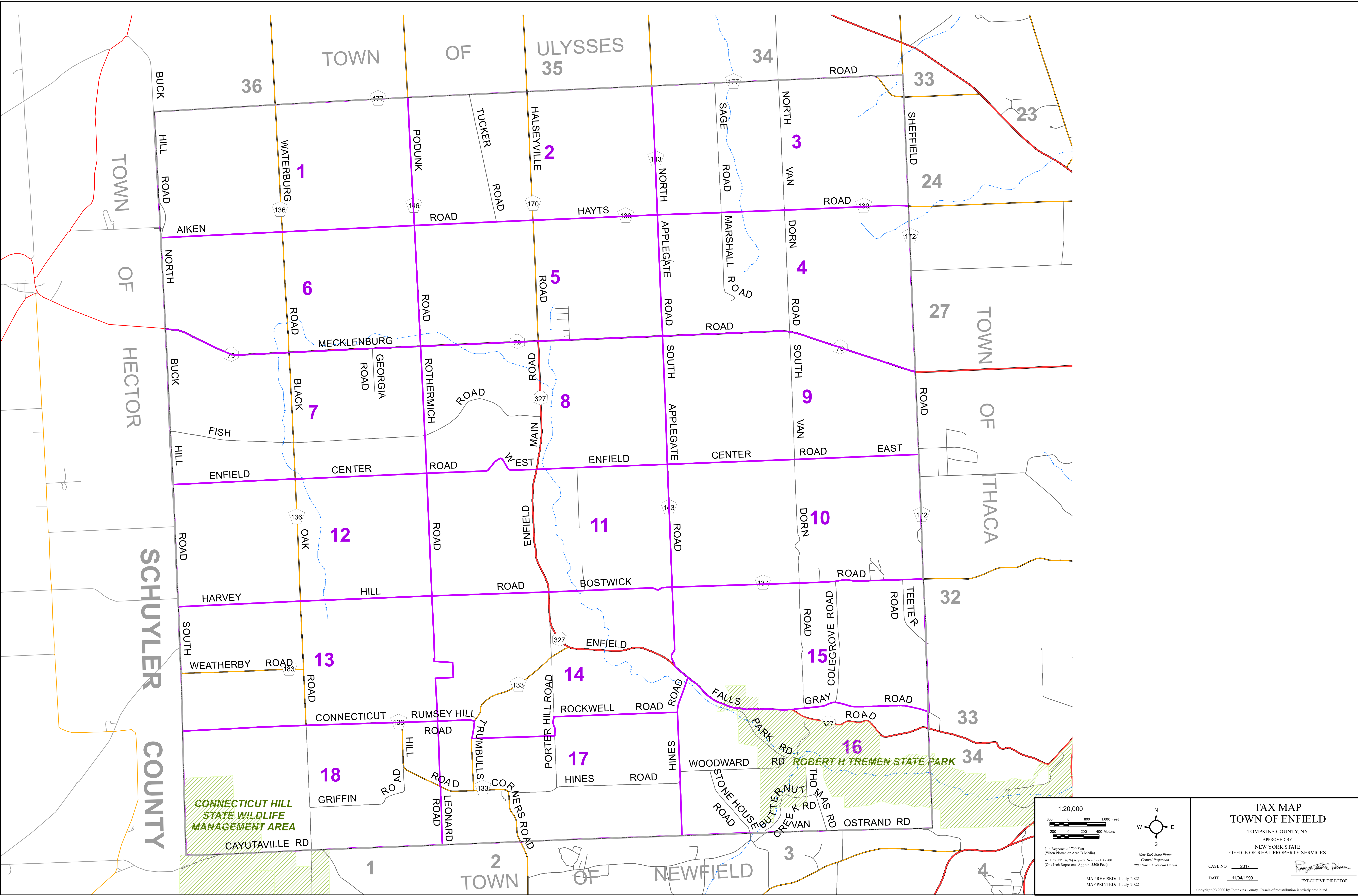
- Building Footprint (1991-2022)
- Curb/Pavement Line
- Railroad
- Hydrography
- Special Districts
- Municipality
- Military Tract/Watkins & Flint Lot Number

- LEGEND**
- Parcel Connector
 - Property Line
 - Former Property Line
 - Current Year Changes
 - Block Limit
 - External Tax Map
 - Block Number

- 43.1** Parcel Lot Number
- 3.12** Previous Lot Number
- 4.3** Subdivision Lot Number
- 5.6 Ac** Deed/Survey Acreage
- 2.11 Ac C** Computed Acreage
- 18.50 Ac G** Grouped (Total) Acreage
- 100s** Scaled (Calculated) Acreage
- 100d** Deed Dimension



MAP: 18
 SCALE: 1" = 400'
 (When plotted on Arch D Media)
 11 x 17" (47%), scale is 1" = 800'
 MAP REVISED: 1-JULY-2022
 MAP PRINTED: 1-JULY-2022



CONNECTICUT HILL
STATE WILDLIFE
MANAGEMENT AREA

ROBERT H TREMAN STATE PARK

1:20,000

1 inch Represents 1700 Feet
(When Plotted on Arch D Media)
At 11" x 17" (47%) Approx. Scale is 1:42500
(One Inch Represents Approx. 3500 Feet)

New York State Plane
Central Projection
1983 North American Datum

MAP REVISED: 1-July-2022
MAP PRINTED: 1-July-2022

TAX MAP
TOWN OF ENFIELD
TOMPKINS COUNTY, NY
APPROVED BY
NEW YORK STATE
OFFICE OF REAL PROPERTY SERVICES

CASE NO. 2017
DATE 11/04/1999

Randy J. Treman
EXECUTIVE DIRECTOR

Copyright (c) 2000 by Tompkins County. Resale or redistribution is strictly prohibited.