

# Tompkins County ADA Transition Plan - 2017

Based on the 2010 ADA Standards for Accessible Design

**Project:** Tompkins County Transition Plan 2017

**Building:** Tompkins County Workforce New York

**Location:** Center Ithaca, Suite 241, Ithaca NY

**Date:** May 24, 2017

**Surveyor(s):** Alan Lockett – Assistant Director of Facilities



## ADA Checklist for Existing Facilities

# Priority 1 – Approach & Entrance

Based on the 2010 ADA Standards for Accessible Design



**All facilities should have at a minimum an accessible route to a main building entrance.**



Institute for Human Centered Design  
[www.HumanCenteredDesign.org](http://www.HumanCenteredDesign.org) 2014



ADA National Network  
[www.ADAchecklist.org](http://www.ADAchecklist.org)

The Tompkins County Workforce program is located in a leased space in Center Ithaca. Center Ithaca is a multi-use building consisting of retail, office space, residential apartments, and a food court.

There are three main entrances to Center Ithaca with the north entrance off of the Commons the most widely used and the south entrance from Green Street the next most widely used entrance.



The above photo is approaching the south side of Center Ithaca from Green Street.

There is public transportation to the site as well as a parking garage with elevator access from it to the building. Entrances to the building are double door and automatic operation.

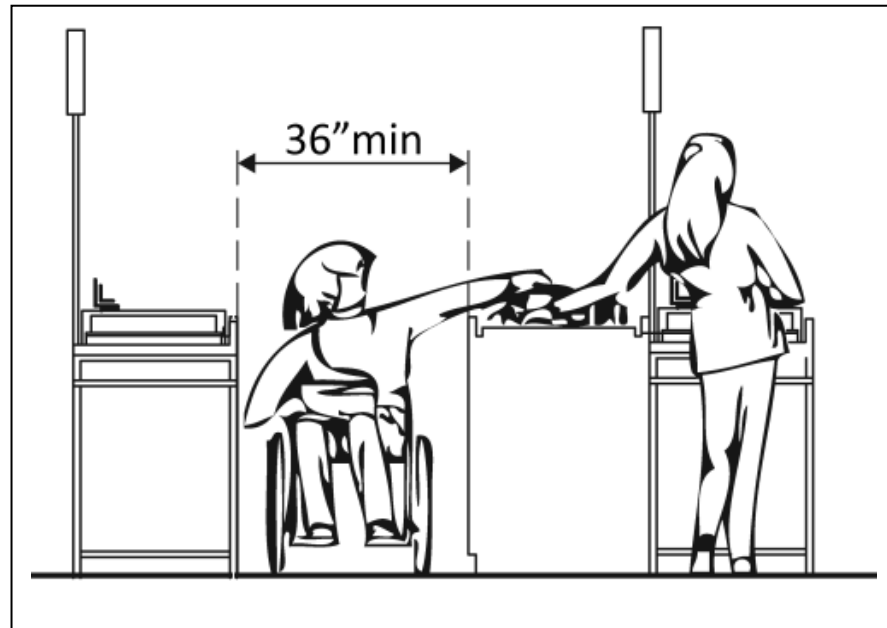
No improvements are required to access Center Ithaca.



# ADA Checklist for Existing Facilities

## Priority 2 – Access to Goods & Services

Based on the 2010 ADA Standards for Accessible Design



**The layout of the building should allow people with disabilities to obtain goods and services and to participate in activities without assistance.**



Institute for Human Centered Design  
[www.HumanCenteredDesign.org](http://www.HumanCenteredDesign.org) 2014



ADA National Network  
[www.ADAchecklist.org](http://www.ADAchecklist.org)

Tompkins County Workforce NY provides a fully assisted approach for accessing employment-related services for businesses, workers, and jobseekers in Tompkins County. Its full-service Workforce New York Career Center is staffed with professionally trained personnel available to assist jobseekers and employers.

In addition to help from staff, the Center has an open floor plan that is easily negotiated by those that may have mobility disabilities. Desks of varying heights are available and one computer station utilizes a desk with adjustable height.

Although the main entrance to the Center has a wide door and lever handle, it is typically left open during working hours.

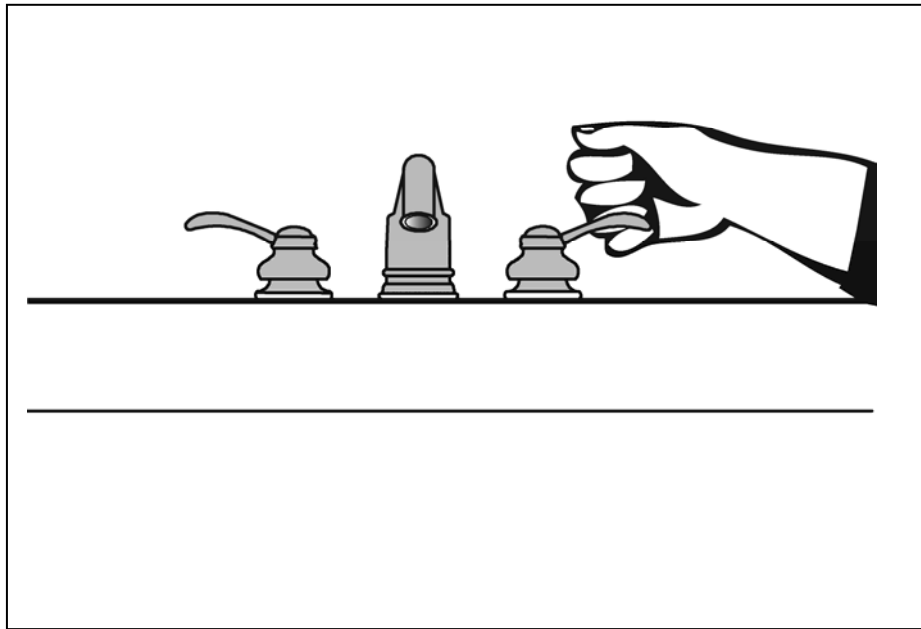
The Center is on the second floor of Center Ithaca. A fully accessible elevator is available to access that level.



# The ADA Checklist for Existing Facilities

## Priority 3 - Toilet Rooms

Based on the 2010 ADA Standards for Accessible Design



**When toilet rooms are open to the public they should be accessible to people with disabilities.**



Institute for Human Centered Design  
[www.HumanCenteredDesign.org](http://www.HumanCenteredDesign.org) 2014



ADA National Network  
[www.ADAchecklist.org](http://www.ADAchecklist.org)

The Workforce Center does not have toilet rooms in their space. Separate and fully accessible toilet rooms are available for men and women located on the mezzanine level of Center Ithaca. This level is accessible by elevator.





## ADA Checklist for Existing Facilities

# Priority 4 – Additional Access

Based on the 2010 ADA Standards for Accessible Design



**The layout of the building should allow people with disabilities to obtain goods and services and to participate in activities without assistance.**



Institute for Human Centered Design  
[www.HumanCenteredDesign.org](http://www.HumanCenteredDesign.org) 2014



ADA National Network  
[www.ADAchecklist.org](http://www.ADAchecklist.org)

The building as well as the space occupied by the Workforce Center is laid out such that persons with disabilities have access to all of the programs and services contained therein. Additionally there is always a staff member available to aid persons that need assistance.

# ADA Checklist for Existing TC Facilities

**Summary of items that could be improved.**

**Building:** TC Workforce New York

**Date Inspected:** May 24, 2017

**Priority 1**

Item	Correction	Target Date	Date Completed
None			

**Priority 2**

Item	Correction	Target Date	Date Completed
None			

**Priority 3**

Item	Correction	Target Date	Date Completed
None			

**Priority 4**

Item	Correction	Target Date	Date Completed
None			