

# Tompkins County ADA Transition Plan - 2017

Based on the 2010 ADA Standards for Accessible Design

**Project:** Tompkins County Transition Plan 2017

**Building:** TC Health Department

**Location:** 55 Brown Road, Ithaca, NY

**Date:** April 19, 2017

**Surveyor(s):** Alan Lockett – Assistant Director of Facilities



## ADA Checklist for Existing Facilities

# Priority 1 – Approach & Entrance

Based on the 2010 ADA Standards for Accessible Design




**All facilities should have at a minimum an accessible route to a main building entrance.**





Institute for Human Centered Design  
[www.HumanCenteredDesign.org](http://www.HumanCenteredDesign.org) 2014




ADA National Network  
[www.ADAchecklist.org](http://www.ADAchecklist.org)

Priority 1 – Approach & Entrance			Comments
1.1	Is there at least one route from site arrival points (parking, passenger loading zones, public sidewalks and public transportation stops) that does not require the use of stairs?	Yes	
1.2	If parking is provided for the public, are an adequate number of accessible spaces provided? [208.2]	Yes Total #: 60+ Accessible #: 6	With 3 accessible aisles.
1.3	Of the accessible spaces, is at least one a van accessible space? [208.2.4]	Yes	
1.4	Are accessible spaces at least 8 feet wide with an access aisle at least 5 feet wide? [502.2, 502.3]  Note: Two spaces may share an access aisle.	Yes  Measurement: 9'	
1.5	Is the van accessible space: At least 11 feet wide.	No Measurement: 9'	
1.6	Are the access aisles marked so as to discourage parking in them? [502.3.3]	Yes	
1.7	Is the slope of the accessible parking spaces and access aisles no steeper than 1:48 in all directions? [502.4]	Yes	
1.8	Do the access aisles adjoin an accessible route? [502.3]	Yes	Concrete sidewalk.

<p><b>1.9</b></p>	<p>Are accessible spaces identified with a sign that includes the International Symbol of Accessibility? Is the bottom of the sign at least 60 inches above the ground? [502.6]</p>	<p>Yes  Yes</p>	
<p><b>1.10</b></p>	<p>Is the route stable, firm and slip-resistant? [302.1]</p>	<p>Yes</p>	
<p><b>1.11</b></p>	<p>If the route is greater than 200 feet in length and less than 60 inches wide, is there a passing space no less than 60 x 60 inches? [403.5.3]</p>	<p>NA</p>	
<p><b>1.12</b></p>	<p>Is the running slope no steeper than 1:20, i.e. for every inch of height change there are at least 20 inches of route run? [403.3]</p>	<p>No</p>	
<p><b>1.13</b></p>	<p>Is the cross slope no steeper than 1:48? [403.3]</p>	<p>No</p>	
<p><b>Curb Ramps</b></p>			
<p><b>1.14</b></p>	<p>If the accessible route crosses a curb, is there a curb ramp? [402.2]</p>	<p>Yes</p>	
<p><b>1.15</b></p>	<p>Is the running slope of the curb ramp no steeper than 1:12, i.e. for every inch of height change there are at least 12 inches of curb ramp run? [406.1, 405.2]</p>	<p>Yes</p>	
<p><b>1.16</b></p>	<p>Is the curb ramp, excluding flares, at least 36 inches wide? [406.1, 405.5]</p>	<p>Yes</p>	

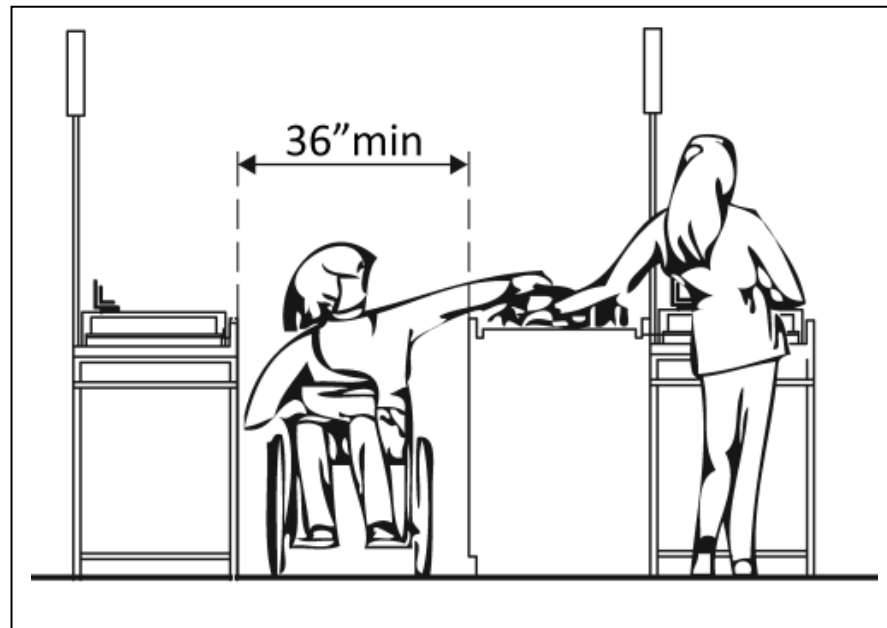
Ramps <input type="checkbox"/> YES <input checked="" type="checkbox"/> NO			
1.17-1.28	If there is a ramp is it at least 36 inches wide? [405.5]	NA	
Entrance			
1.29	Is the main entrance accessible?	Yes	
1.30	If the main entrance is not accessible, is there an alternative accessible entrance?  Can the alternative accessible entrance be used independently and during the same hours as the main entrance?	Yes  Yes	A second entrance is also accessible but for employees only.
1.31	Do all inaccessible entrances have signs indicating the location of the nearest accessible entrance? [216.6]	No	Only one main entrance for public.
1.32	If not all entrances are accessible, is there a sign at the accessible entrance with the International Symbol of Accessibility? [216.6]	NA	
1.33	Is the clear opening width of the accessible entrance door at least 32 inches, between the face of the door and the stop, when the door is open 90 degrees? [404.2.3]	Yes  Measurement: 33 3/4	

1.34	If there is a front approach to the pull side of the door, is there at least 18 inches of maneuvering clearance beyond the latch side plus at least 60 inches clear depth?	Yes	
1.35	If the threshold is vertical is it no more than 1/2 inch high?	Yes	
1.36	Is the door equipped with hardware that is operable with one hand and doesn't require firm grasping, pinching or twisting the wrist?	Yes	<p>Has U-pull handle and an automatic door opener.</p> 
1.37	Are the operable parts of the door hardware no less than 34 inches and no greater than 48 inches above the floor or ground surface? [404.2.7]	Yes Measurement: 34 – 38"	
1.38	If the door has a closer, does it take at least 5 seconds to close from an open position of 90 degrees [404.2.8]	Yes Measurement: 20	
1.39	If there are two doors in a series, e.g. vestibule, is the distance between the doors at least 48 inches plus the width of the doors when swinging into the space? [404.2.6]	Yes Measurement: 10'	
1.40	If provided at the building entrance, are carpets or mats no higher than 1/2 inch thick? [302.2]	Yes Measurement: 1/4"	

## ADA Checklist for Existing Facilities

# Priority 2 – Access to Goods & Services

Based on the 2010 ADA Standards for Accessible Design



**The layout of the building should allow people with disabilities to obtain goods and services and to participate in activities without assistance.**




Institute for Human Centered Design  
[www.HumanCenteredDesign.org](http://www.HumanCenteredDesign.org) 2014




ADA National Network  
[www.ADAchecklist.org](http://www.ADAchecklist.org)

Priority 2 – Access to Goods & Services			Comments
2.1	Does the accessible entrance provide direct access to the main floor, lobby and elevator? [See 2010 ADA Standards for Accessible Design – 206.4]	Yes	
<b>Interior Accessible Route</b>			
2.2	Are all public spaces on at least one accessible route? [206.2.4]	Yes	
2.3	Is the route stable, firm and slip-resistant? [40.2, 302.1]	Yes	
2.4	Is the route at least 36 inches wide? [403.5.1]  Note: The accessible route can narrow to 32 inches min. for a max. of 24 inches. These narrower portions of the route must be at least 48 inches from each other.	Yes  Measurement: 60" In WIC wing.	The Women, Infants, Children (WIC) wing is the area of the building most accessed by the public.
2.5	If the route is greater than 200 feet in length and less than 60 inches wide, is there a passing space no less than 60 x 60 inches? [403.5.3]	NA	
2.6	Is the running slope no steeper than 1:20, i.e. for every inch of height change there are at least 20 inches of route run? [403.3]	NA	
2.7	Is the cross slope no steeper than 1:48? [403.3]	NA	
2.8	Do all objects on circulation paths through public areas, e.g. fire extinguishers, drinking fountains, signs, etc., protrude no more than 4 inches into the path? [307.4]	Yes	
2.9	Are there elevators or platform lifts to all public stories?	Yes	One elevator.
<b>Ramps</b> <input type="checkbox"/> YES <input checked="" type="checkbox"/> NO			
2.10-2.21	If there is a ramp, is it at least 36 inches wide? [405.5]	NA	
<b>Elevators – Full Size &amp; LULA (limited use, limited application)</b> <input checked="" type="checkbox"/> YES <input type="checkbox"/> NO			
2.22	If there is a full size or LULA elevator, are the call buttons no higher than 54 inches above the floor? [407.2.1.1]	Yes	



2.23	If there is a full size or LULA elevator, does the sliding door reopen automatically when obstructed by an object or person?* 407.3.3]	Yes	
2.24	<p>If there is a full size elevator:</p> <p>Is the interior at least 54 inches deep by at least 36 inches wide with at least 16 sq. ft. of clear floor area?</p> <p>Is the door opening width at least 32 inches? [407.4.1 Exception]</p>	<p>Yes</p> <p>Measurement: 5' D x 7' W</p> <p>Yes</p> <p>Measurement: 42"</p>	
2.25	If there is a LULA elevator, is the interior:	NA	
2.26	<p>If there is a full size or LULA elevator, are the in-car controls:</p> <p>No less than 15 inches and no greater 48 inches above the floor?</p>	<p>Yes</p> <p>Measurement: 39"</p>	
2.27	If there is a LULA elevator, are the in-car controls centered on a side wall? [408.4.6]	NA	
2.28	<p>If there is a full size or LULA elevator:</p> <p>Are the car control buttons designated with raised characters?</p> <p>Are the car control buttons designated with Braille? [407.4.7.1, 703.2]</p>	<p>Yes</p> <p>Yes</p>	
2.29	If there is a full size or LULA elevator, are there audible signals which sound as the car is about to stop at a floor? {407.4.8]	Yes	

2.30	<p>If there is a full size or LULA elevator:</p> <p>Is there a sign on both door jambs at every floor identifying the floor?</p> <p>Do text characters contrast with their backgrounds?</p> <p>Are text characters raised and Braille?</p>	<p>Yes</p> <p>Yes</p> <p>Yes/No</p>	<p>White on black. Raised letter but no braille.</p>
<b>Platform Lifts</b> <input type="checkbox"/> YES <input checked="" type="checkbox"/> NO			
2.31	<p>If a lift is provided, can it be used without assistance from others? [410.1]</p>	<p>NA</p>	
<b>Signs</b> "Tactile characters" are read using touch, i.e. raised characters and Braille.			
2.32	<p>If there are signs designating permanent rooms and spaces [216.2]</p> <p>Do text characters contrast with their backgrounds? [703.5]</p> <p>Are text characters raised / Braille? [703.2]</p>	<p>Yes</p> <p>Yes</p> <p>Yes</p>	<p>White on blue.</p>
2.33	<p>If there are signs that provide direction to or information about interior spaces:</p> <p>Do text characters contrast with their backgrounds? [703.5.1]</p> <p>Is the sign mounted so that characters are at least 40 inches above the floor? [703.5.6]</p>	<p>Yes</p> <p>Yes</p> <p>Measurement: 56"</p>	
<b>Interior Doors – Rice Conference Room</b>			
2.34	<p>Is the door opening width at least 32 inches clear, between the face of the door and the stop, when the door is open 90 degrees? [404.2.3]</p>	<p>Yes</p> <p>Measurement: 33 ¾"</p>	
2.35	<p>If there is a front approach to the pull side of the door, is there at least 18 inches of maneuvering clearance beyond the latch side plus at least 60 inches clear depth?</p>	<p>Yes</p>	
2.36	<p>Is the threshold no more than ¾ inch high with the top ½ inch beveled no steeper than 1:2, [404.2.5, 303.2]</p>	<p>Yes</p>	

<p><b>2.37</b></p>	<p>Is the door equipped with hardware that is operable with one hand and does not require tight grasping, pinching or twisting of the wrist?</p> <p>Door handle?</p>	<p>Yes</p> <p>Yes</p>	<p>Lever handles.</p> 
<p><b>2.38</b></p>	<p>Are the operable parts of the hardware no less than 34 inches and no greater than 48 inches above the floor? [404.2.7]</p>	<p>Yes</p>	
<p><b>2.39</b></p>	<p>Can the door be opened easily (5 pounds maximum force)? [404.2.9]</p>	<p>Yes</p>	
<p><b>2.40</b></p>	<p>If the door has a closer, does it take at least 5 seconds to close from an open position of 90 [404.2.8.1]</p>	<p>Yes</p> <p>Measurement: 7 seconds</p>	
<p><b>Rooms and Spaces</b></p>			
<p><b>2.41</b></p>	<p>Are aisles and pathways to and services, and to one of each type of sales and service counters, at least 36 inches wide? [403.5.1]</p>	<p>Yes</p>	
<p><b>2.42</b></p>	<p>Are floor surfaces stable, firm and slip resistant? [302.1]</p>	<p>Yes</p>	
<p><b>2.43</b></p>	<p>If there is carpet: Is it no higher than ½ inch?</p>	<p>Yes</p>	

**Controls – light switches, security and intercom systems, emergency/alarm boxes, etc.**

2.44	Is there a clear floor space at least 30 inches wide by at least 48 inches long for a forward or parallel approach? [305.3] Are the operable parts no higher than 48 inches above the floor?*[309.3, 308]	Yes	
		Yes	
2.45	Can the control be operated with one hand and without tight grasping, pinching, or twisting of the wrist? [309.4]	Yes	

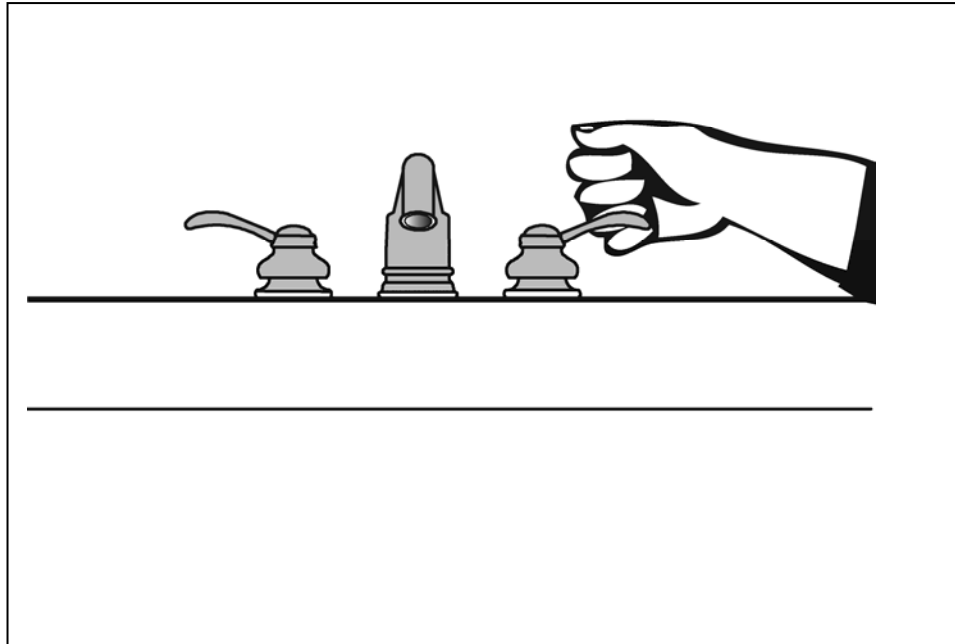
**Seating - Rice conference room, counters, etc.**

2.46	Are at least 5%, but no fewer than one, of seating and standing spaces accessible for people who use wheelchairs? [226.1]	Yes	Conference rooms are open floor plan with no fixed seating.
2.47	Is there a route at least 36 inches wide to accessible seating? [403.5.1]	Yes	
2.48	At the accessible space(s), is the top of the accessible surface no less than 28 inches and no greater than 34 inches above the floor? [902.3]	Yes	
2.49	If there is a check writing surface, is the top no less than 28 inches and no greater than 34 inches above the floor? [904.3.3]	NA	

# The ADA Checklist for Existing Facilities

## Priority 3 - Toilet Rooms

Based on the 2010 ADA Standards for Accessible Design



**When toilet rooms are open to the public they should be accessible to people with disabilities.**



Institute for Human Centered Design  
[www.HumanCenteredDesign.org](http://www.HumanCenteredDesign.org) 2014




ADA National Network  
[www.ADAchecklist.org](http://www.ADAchecklist.org)

Priority 3 – Toilet Rooms			Comments
3.1	If toilet rooms are available to the public, is at least one toilet room accessible? (Either one for each sex, or one unisex.)	Yes	M/F accessible toilet rooms are available to the public on the first floor.
3.2	Are there signs at inaccessible toilet rooms that give directions to accessible toilet rooms?	No	The only toilet rooms available to the public are fully accessible.
<b>Accessible Route</b>			
3.3	Is there an accessible route to the accessible toilet room? [206.2.4]	Yes	
<b>Signs at Toilet Rooms</b>			
3.4	Do text characters contrast with their backgrounds? [703.5]	Yes	
	Are text characters raised? [703.2]	Yes	
	Is there Braille? [703.3]	Yes	
	Is the sign mounted latch side of the door? [703.4.2]	Yes	
<b>Entrance</b>			
3.5	Is the door opening width at least 32 inches clear, between the face of the door and the stop, when the door is open 90 degrees? [404.2.3]	Yes Measurement: 33 ¾"	
3.6	If there is a front approach to the pull side of the door is there at least 18 inches of maneuvering clearance beyond the latch side plus 60 inches clear depth?	Yes	
3.7	If the threshold is vertical is it no more than ¾ inch high with the top ½ inch beveled no steeper than 1:2	NA	
3.8	Is the door equipped with hardware that is operable with one hand and does not require tight grasping, pinching or twisting of the wrist?	Yes	
3.9	Are the operable parts of the door hardware mounted no less than 34 inches and no greater than 48 inches above the floor? [404.2.7]	Yes Measurement: 38"	

<b>3.10</b>	Can the door be opened easily (5 pounds maximum force)? [404.2.9]	Yes	
<b>3.11</b>	If there are two doors in a series, e.g. vestibule, is the distance between the doors at least 48 inches [404.2.6]	NA	
<b>3.12</b>	If there is a privacy wall and the door swings out, is there at least 24 inches of maneuvering clearance beyond the door latch side and 42 inches to the privacy wall? [404.2.4]	NA	
<b>3.13</b>	If there is a privacy wall and the door swings in, is there at least 24 inches of maneuvering clearance beyond the door latch side and at least 48 inches to the privacy wall if there is no door closer or at least 54 inches if there is a door closer? [404.2.4]	NA	
<b>Toilet Room Accessories</b>			
<b>3.14</b>	Is there a clear path to at least one of each type of fixture, e.g. lavatory, hand dryer, etc., that is at least 36 inches wide?[403.5.1]	Yes	
<b>3.15</b>	Is there clear floor space available for a person in a wheelchair to turn around, i.e. a circle at least 60 inches in diameter or a T-shaped space within a 60-inch square? [603.2.1]	Yes	
<b>3.16</b>	If the mirror is over a lavatory or countertop, is the bottom edge of the reflecting surface no higher than 40 inches above the floor? surface no higher than 35 inches above the floor?*[603.3]	Yes Measurement: 40"	
<b>3.17</b>	If there is a coat hook, is it no less than 15 inches and no greater than 48 inches above the floor?*[603.4]	No	Provide a coat hook on 1 <sup>st</sup> floor M/F public toilet room doors. Note: accessible coat hooks are on toilet stall doors.
<b>Toilet Rooms</b>			
<b>3.18</b>	Does at least one lavatory have a clear floor space for a forward approach at least 30 inches wide and 48 inches long? [606.2]	Yes	
<b>3.19</b>	Are pipes below the lavatory insulated or otherwise configured to protect against contact? [606.5]	Yes	

<b>3.20</b>	Can the faucet be operated without tight grasping, pinching, or twisting of the wrist?	Yes	Auto operation.
<b>Soap Dispensers and Hand Dryers</b>			
<b>3.21</b>	Are the operable parts of the soap dispenser, paper towels, hand dryer No higher than 48 inches above the floor? [308.2.2]	Yes	
<b>Water Closets in Single-User Toilet Rooms and Compartments (Stalls)</b>			
<b>3.22</b>	Is the centerline of the water closet no less than 16 inches and no greater than 18 inches from the side wall or partition? [604.2]	Yes Measurement: 18"	
<b>3.23</b>	Is the height of the water closet no less than 17 inches and no greater than 19 inches above the floor measured to the top of the seat? [604.4]	Yes Measurement: 19"	
<b>3.24</b>	If the flush control is hand operated, can it be operated with one hand and without tight grasping, pinching, or twisting of the wrist?	Yes	Auto operation.
<b>3.25</b>	Is the flush control on the open side of the water closet? [604.6]	NA	
<b>3.26</b>	Is the toilet paper dispenser at front of the water closet and easily accessible [604.7]	Yes	
<b>3.27</b>	Does the dispenser allow continuous paper flow? [604.7]	Yes	
<b>Toilet Compartments (Stalls)</b>			
<b>3.28</b>	Is the door opening width at least 32 inches clear, between the face of the door and the stop, when the door is open 90 degrees? [604.8.1.2]	Yes Measurement: 37"	
<b>3.29</b>	If there is a front approach to the pull side of the door, is there at least 18 inches of maneuvering clearance beyond the latch side plus 60 inches clear depth? [604.8.1.2]	Yes	



3.30	Is the door self-closing? [604.8.1.2]	Yes	
3.31	Are there door pulls on both sides of the door that are operable with one hand and do not require tight grasping pinching or twisting of the wrist? [604.8.1.2]	Yes	U-pull.
3.32	Is the lock operable with one hand and without tight grasping, pinching or twisting of the wrist? [309.4]	Yes	
3.33	Are the operable parts of the door hardware mounted no less than 34 inches and no greater than 48 inches above the floor? [404.2.7]	Yes Measurement: 37"	
3.34	Is the compartment at least 60 inches wide? [604.8.1.1]	Yes Measurement: 60 ½"	
3.35	If the water closet is floor mounted, is the compartment at least 59 inches deep? [604.8.1.1]	Yes Measurement: 60"	

## ADA Checklist for Existing Facilities

# Priority 4 – Additional Access

Based on the 2010 ADA Standards for Accessible Design




**The layout of the building should allow people with disabilities to obtain goods and services and to participate in activities without assistance.**



Institute for Human Centered Design  
[www.HumanCenteredDesign.org](http://www.HumanCenteredDesign.org) 2014



ADA National Network  
[www.ADAchecklist.org](http://www.ADAchecklist.org)

Priority 4 – Additional Access		Comments	
<p><b>4.1</b></p>	<p>Does at least one drinking fountain have a clear floor space at least 30 inches wide x at least 48 inches long centered in front of it for a forward approach?*</p> <p>[See 2010 ADA Standards for Accessible Design – 602.2]</p>	<p>Yes</p>	
<p><b>4.2</b></p>	<p>Can the control be operated with one hand and without tight grasping, pinching or twisting of the wrist?</p>	<p>Yes</p>	<p>Push operation.</p>
<p><b>4.3</b></p>	<p>Is the spout outlet no higher than 36 inches above the floor? [602.4]</p>	<p>Yes Measurement: 42" and 34"</p>	
<p><b>4.4</b></p>	<p>If there is more than one drinking fountain, is there at least one for standing persons? [211.2]</p>	<p>Yes</p>	
<p><b>4.5</b></p>	<p>If there are fire alarm systems, do they have both flashing lights and audible signals? [702.1]</p>	<p>Yes</p>	

# ADA Checklist for Existing TC Facilities

**Summary of items that could be improved.**

**Building:** Health Department

**Date Inspected:** April 19, 2017

**Priority 1**

Item	Correction	Target Date	Date Completed
None			

**Priority 2**

Item	Correction	Target Date	Date Completed
None			

**Priority 3**

Item	Correction	Target Date	Date Completed
3.17	Provide coat hooks on first floor M/F public toilet room doors.	August 2017	

**Priority 4**

Item	Correction	Target Date	Date Completed
None			